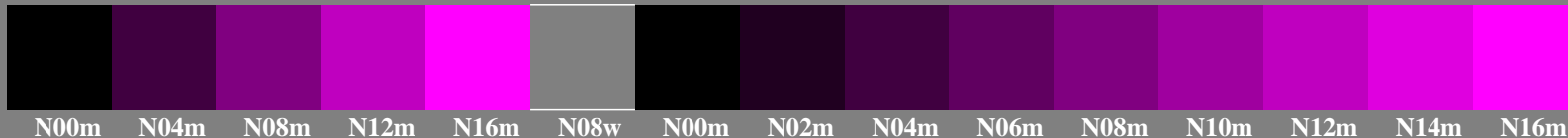


<http://farbe.li.tu-berlin.de/gec5/gec510na.txt> / .ps; only vector graphic VG; start output
 see separate images of this page: <http://farbe.li.tu-berlin.de/gec5/gec5.htm>

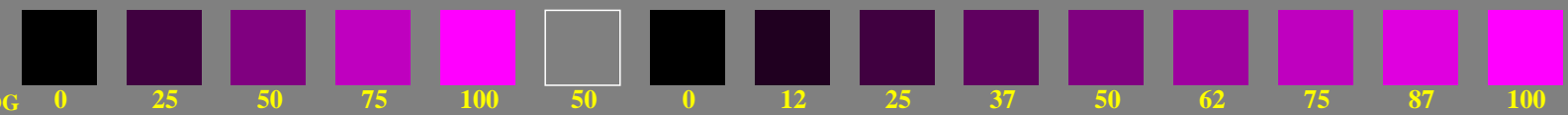
5/9 colour steps: Black N00m – Black N16m = Magenta M

Black N00m – Black N16m = Magenta M

adjacent samples



separate samples



L*TUBLOG

0 25 50 75 100 50 0 12 25 37 50 62 75 87 100

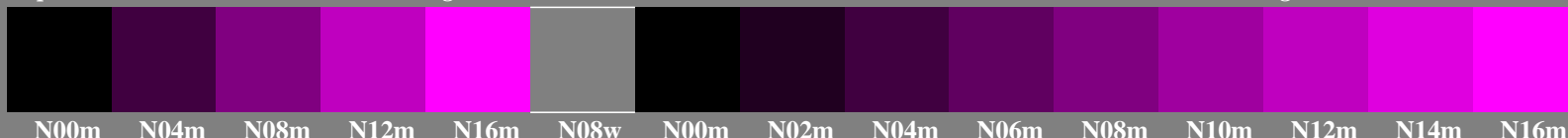
gec50-1n, Test samples: 5 and 9 colour steps, exp0=1, expg=1, inw=1



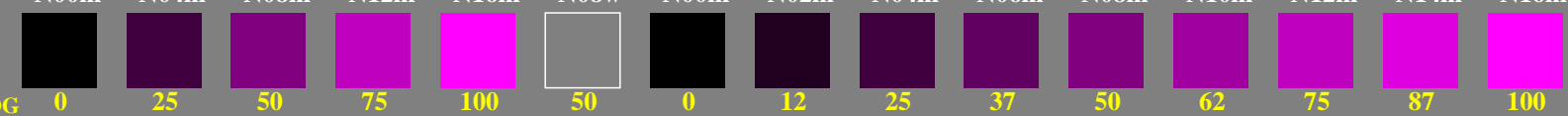
5/9 colour steps: Black N00m – Black N16m = Magenta M

Black N00m – Black N16m = Magenta M

adjacent samples



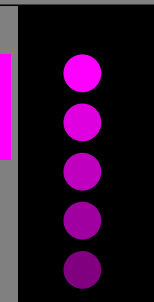
separate samples



L*TUBLOG

0 25 50 75 100 50 0 12 25 37 50 62 75 87 100

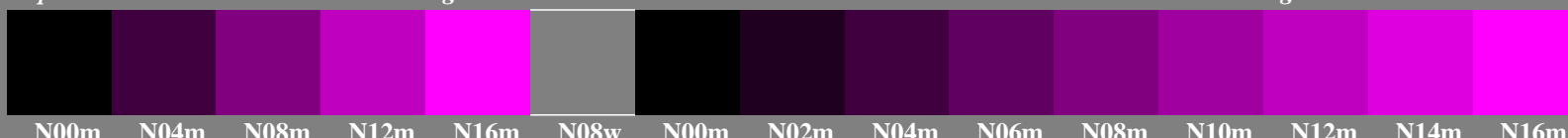
gec50-3n, Test samples: 5 and 9 colour steps, exp0=1, expg=1, inw=1



5/9 colour steps: Black N00m – Black N16m = Magenta M

Black N00m – Black N16m = Magenta M

adjacent samples



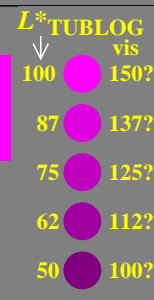
separate samples



L*TUBLOG

0 25 50 75 100 50 0 12 25 37 50 62 75 87 100

gec50-5n, Test samples: 5 and 9 colour steps, exp0=1, expg=1, inw=1



5/9 colour steps: Black N00m – Black N16m = Magenta M

Black N00m – Black N16m = Magenta M

adjacent samples



separate samples



L*TUBLOG

0 25 50 75 100 50 0 12 25 37 50 62 75 87 100

gec50-7n, Test samples: 5 and 9 colour steps, exp0=1, expg=1, inw=1



TUB-test chart gec5; Adjacent and separate colour samples for intervall scaling
 Evaluation of colour steps of the series N–M with 5 and 9 steps; surround mean Grey U=N08w

see similar files of the whole serie: <http://farbe.li.tu-berlin.de/gecs.htm>
 technical information: <http://farbe.li.tu-berlin.de> or <http://color.li.tu-berlin.de>

TUB registration: 20240601-gec5/gec510na.txt / .ps
 application for evaluation and measurement of display or print output

TUB material: code=rh4ta