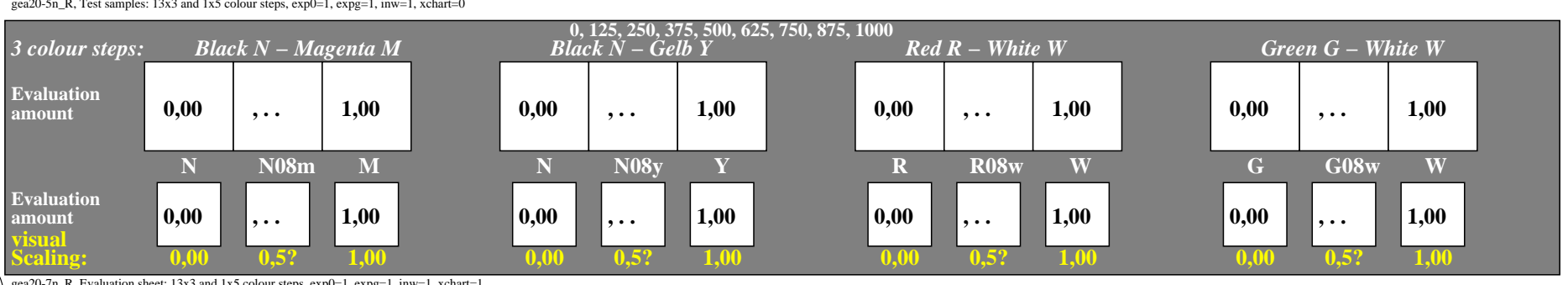
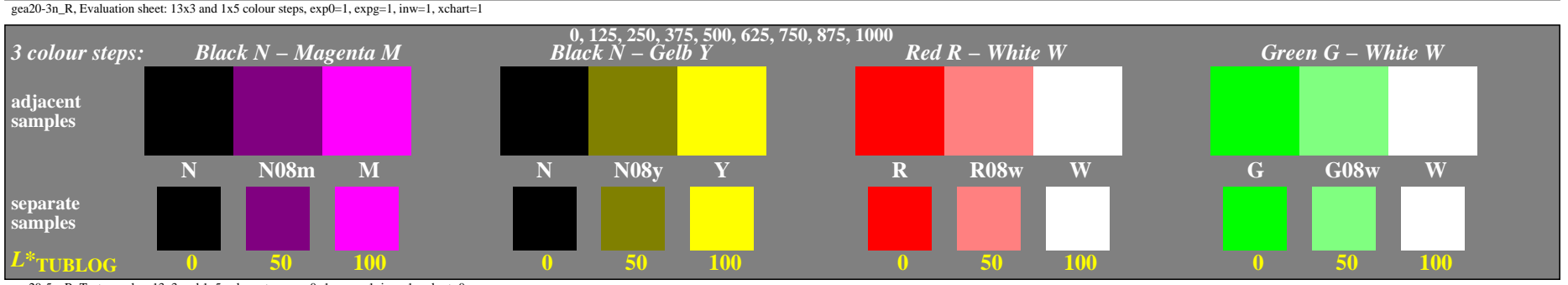
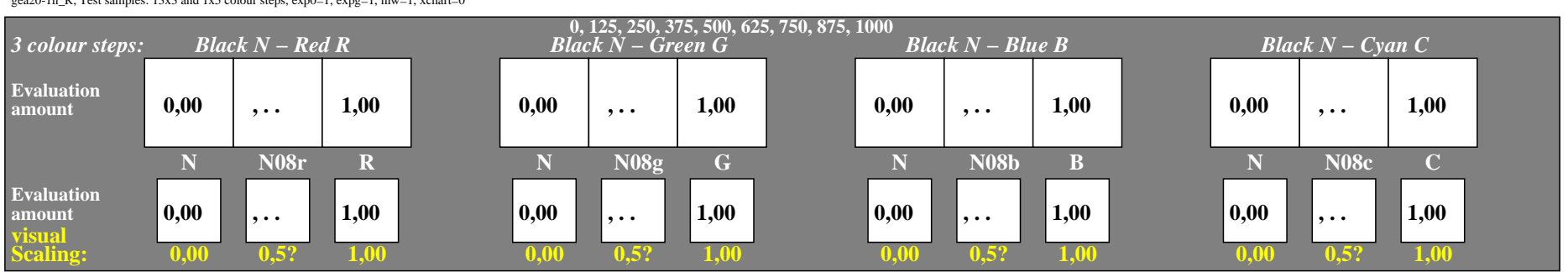
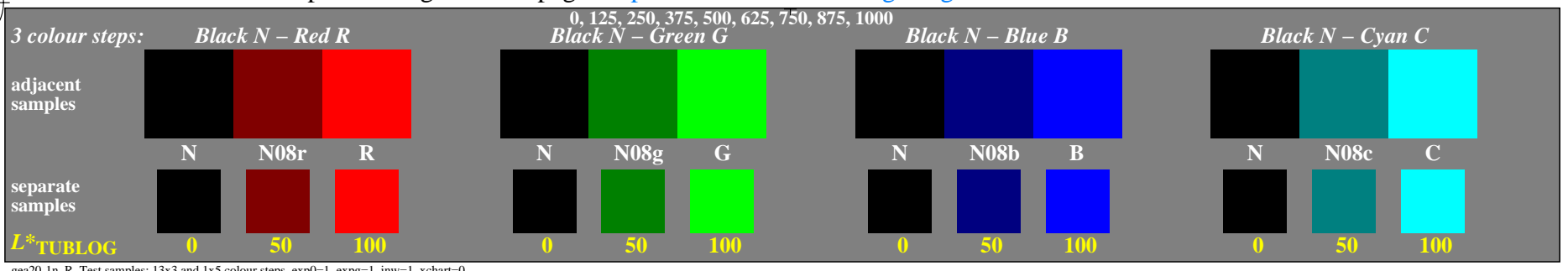


<http://farbe.li.tu-berlin.de/gea2/gea2l0na.txt> / .ps; only vector graphic VG; start output
 see separate images of this page: <http://farbe.li.tu-berlin.de/gea2/gea2.htm>



gea20-7n_R, Evaluation sheet: 13x3 and 1x5 colour steps, exp0=1, expg=1, inw=1, xchart=1

TUB-test chart gea2; Adjacent and separate colour samples for interval scaling
 Evaluation example 3 colour steps for the 8 colour series N–RGBCMY & RG–W

see similar files of the whole serie: <http://farbe.li.tu-berlin.de/gea2/gea2l0na.txt>
 technical information: <http://farbe.li.tu-berlin.de> or <http://color.li.tu-berlin.de>

TUB registration: 20240501-gea2/gea2l0na.txt / .ps
 application for evaluation and measurement of display or print output

TUB material: code=rh4ta