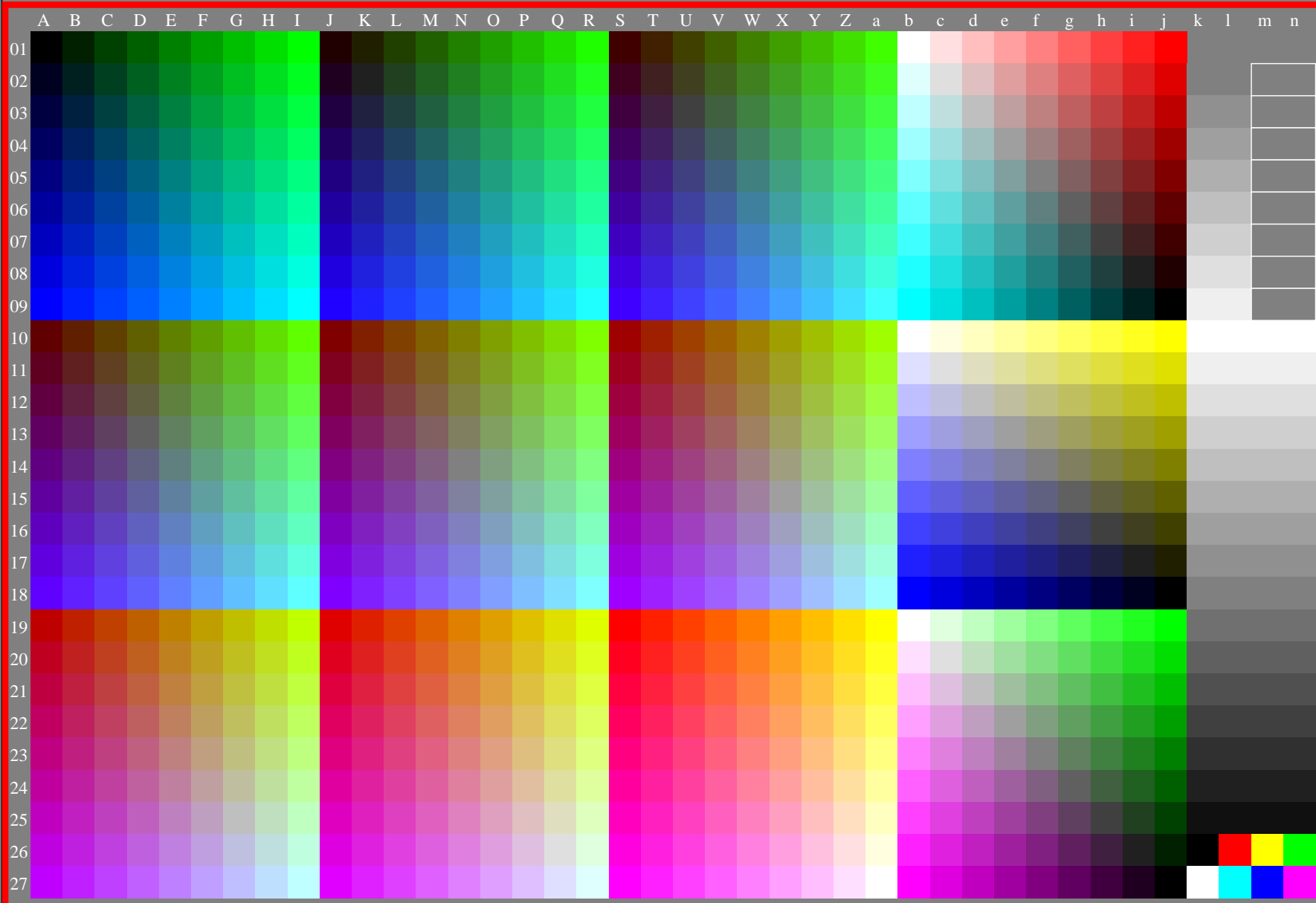


<http://farbe.li.tu-berlin.de/fex7/fex710na.txt> /ps; only vector graphic VG;
see separate images of this page: <http://farbe.li.tu-berlin.de/fex7/fex7.htm>

see similar files of the whole serie: <http://farbe.li.tu-berlin.de/fexs.htm>
technical information: <http://farbe.li.tu-berlin.de> or <http://color.li.tu-berlin.de>



code
P₂-N
w08n p00w
w07n p01w
w06n p02w
w05n p03w
w04n p04w
w03n p05w
w02n p06w
w01n p07w
w00n p08w
w00n w00n
w01n w01n
w03n w03n
w03n w03n
w04n w04n
w05n w05n
w06n w06n
w07n w07n
w08n w08n
w09n w09n
w10n w10n
w11n w11n
w12n w12n
w13n w13n
w14n w14n
w15n w15n
w16n w16n

fex70-8a, gamma $g_a=2,400$, $g_p=1,000$, $C_{YP8}=C_{YN8}$

TUB-test chart fex7; Test charts with 9 and 17 step colours for linearized display output, Gamma optimization for 15 ambient display reflections according to ISO 9241-306; without image; $\gamma_{rel}=1,000$

TUB registration: 20240501-fex7/fex710na.txt /ps
application for evaluation and measurement of display or print output
TUB material: code=rh4ta