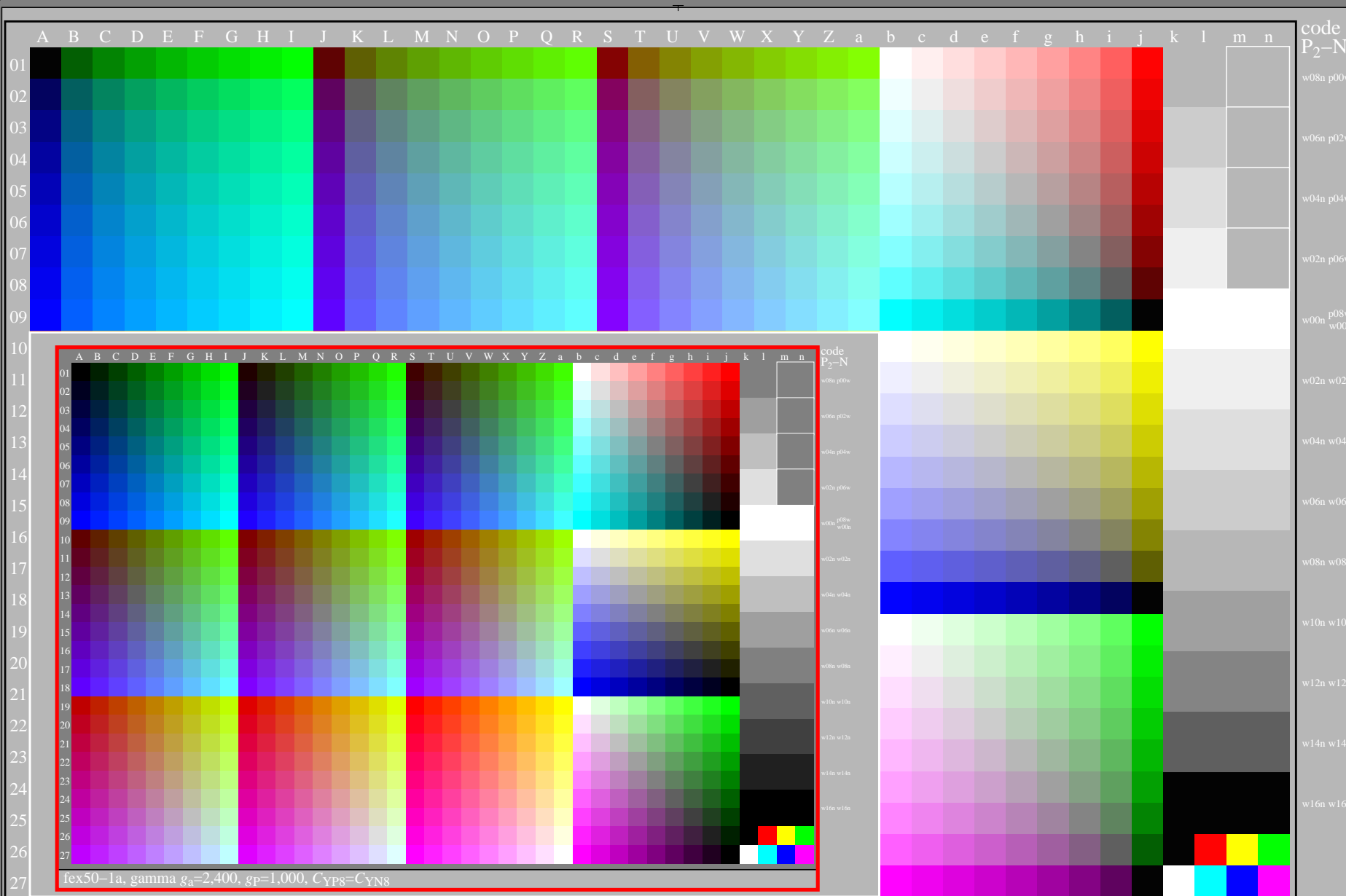


<http://farbe.li.tu-berlin.de/fex5/fex510na.txt> /.ps; only vector graphic VG; start output
see separate images of this page: <http://farbe.li.tu-berlin.de/fex5/fex5.htm>

see similar files of the whole serie: <http://farbe.li.tu-berlin.de/fexs.htm>
technical information: <http://farbe.li.tu-berlin.de> or <http://color.li.tu-berlin.de>

TUB registration: 20240501-fex5/fex510na.txt /.ps
application for evaluation and measurement of display or print output
TUB material: code=th4ta



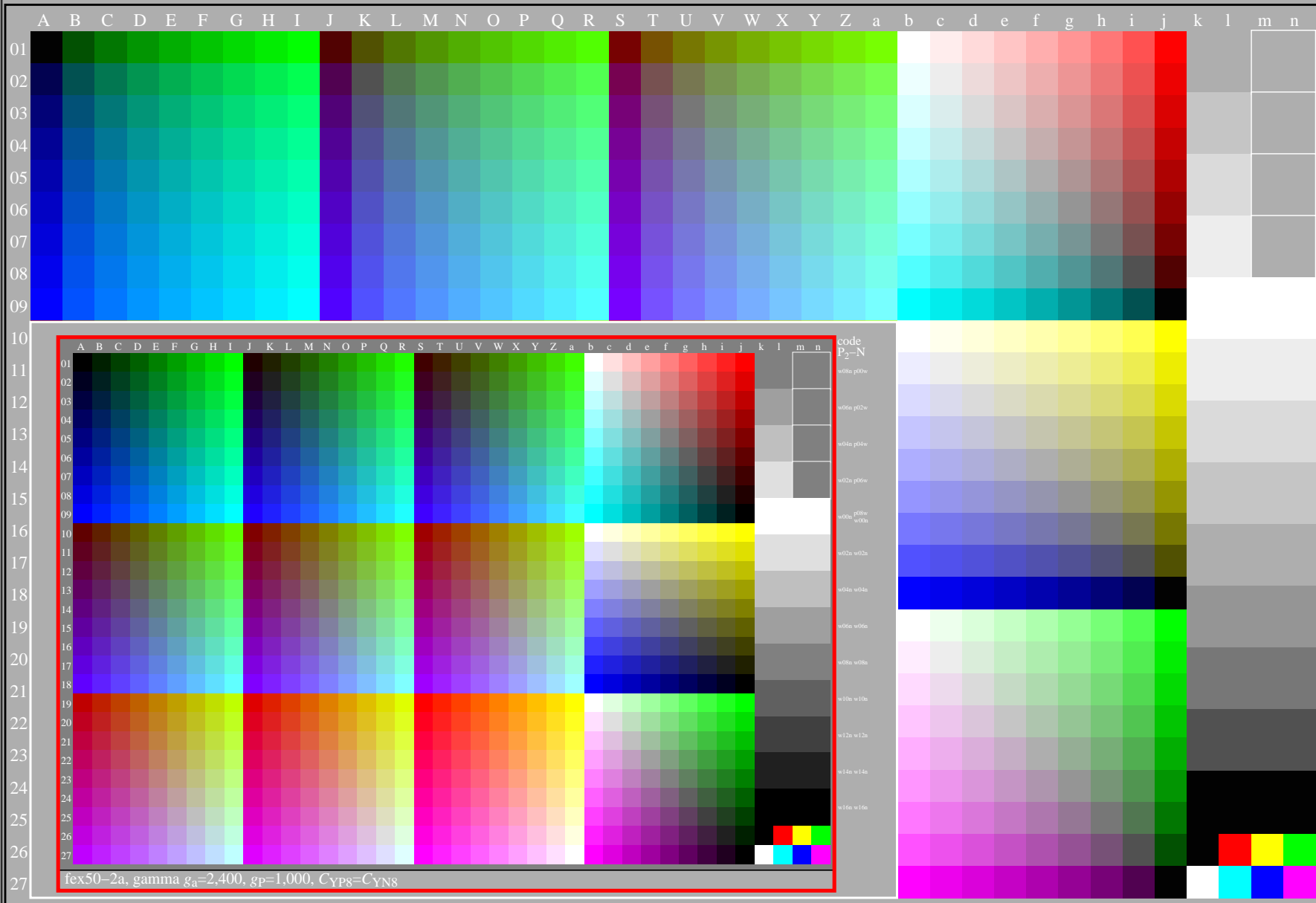
fex50-1a, gamma $g_a=1,140$, $g_p=0,475$, $C_{YP1}=C_{YN15}$

TUB-test chart fex5; Test charts with 5 and 9 step colours for linearized display output, Gamma optimization for 15 ambient display reflections according to ISO 9241-306; with image; $\gamma_{rel}=1,000$

<http://farbe.li.tu-berlin.de/fex5/fex510na.txt> /.ps; only vector graphic VG;
see separate images of this page: <http://farbe.li.tu-berlin.de/fex5/fex5.htm>

see similar files of the whole serie: <http://farbe.li.tu-berlin.de/fexs.htm>
technical information: <http://farbe.li.tu-berlin.de> or <http://color.li.tu-berlin.de>

TUB registration: 20240501-fex5/fex510na.txt /.ps
application for evaluation and measurement of display or print output
TUB material: code=th4ta



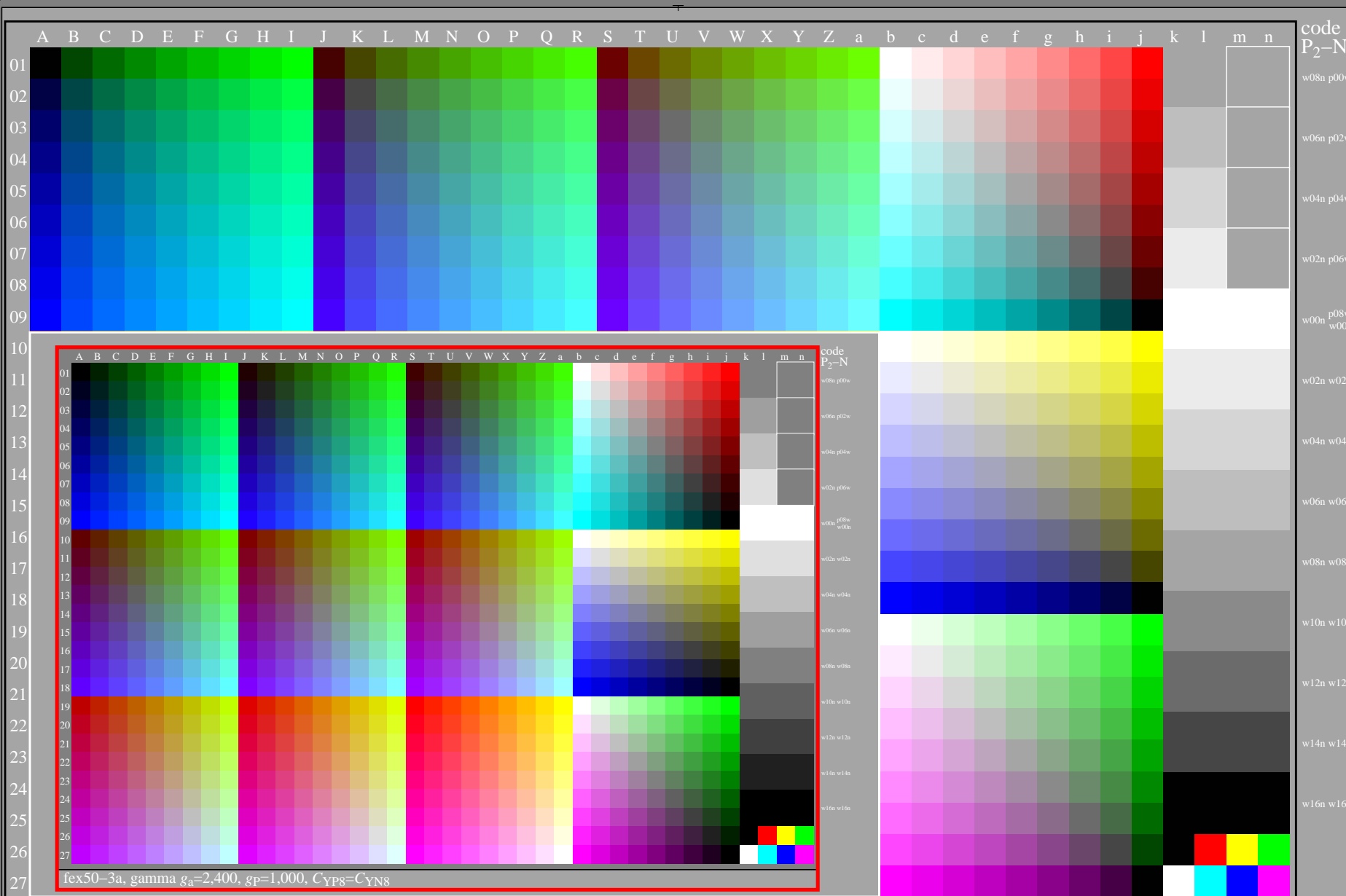
fex50-2a, gamma $g_a=1,320$, $g_p=0,550$, $C_{YP2}=C_{YN14}$

TUB-test chart fex5; Test charts with 5 and 9 step colours for linearized display output, Gamma optimization for 15 ambient display reflections according to ISO 9241-306; with image; $\gamma_{rel}=1,000$

<http://farbe.li.tu-berlin.de/fex5/fex510na.txt> /ps; only vector graphic VG;
see separate images of this page: <http://farbe.li.tu-berlin.de/fex5/fex5.htm>

see similar files of the whole serie: <http://farbe.li.tu-berlin.de/fexs.htm>
technical information: <http://farbe.li.tu-berlin.de> or <http://color.li.tu-berlin.de>

TUB registration: 20240501-fex5/fex510na.txt /ps
application for evaluation and measurement of display or print output
TUB material: code=th4ta



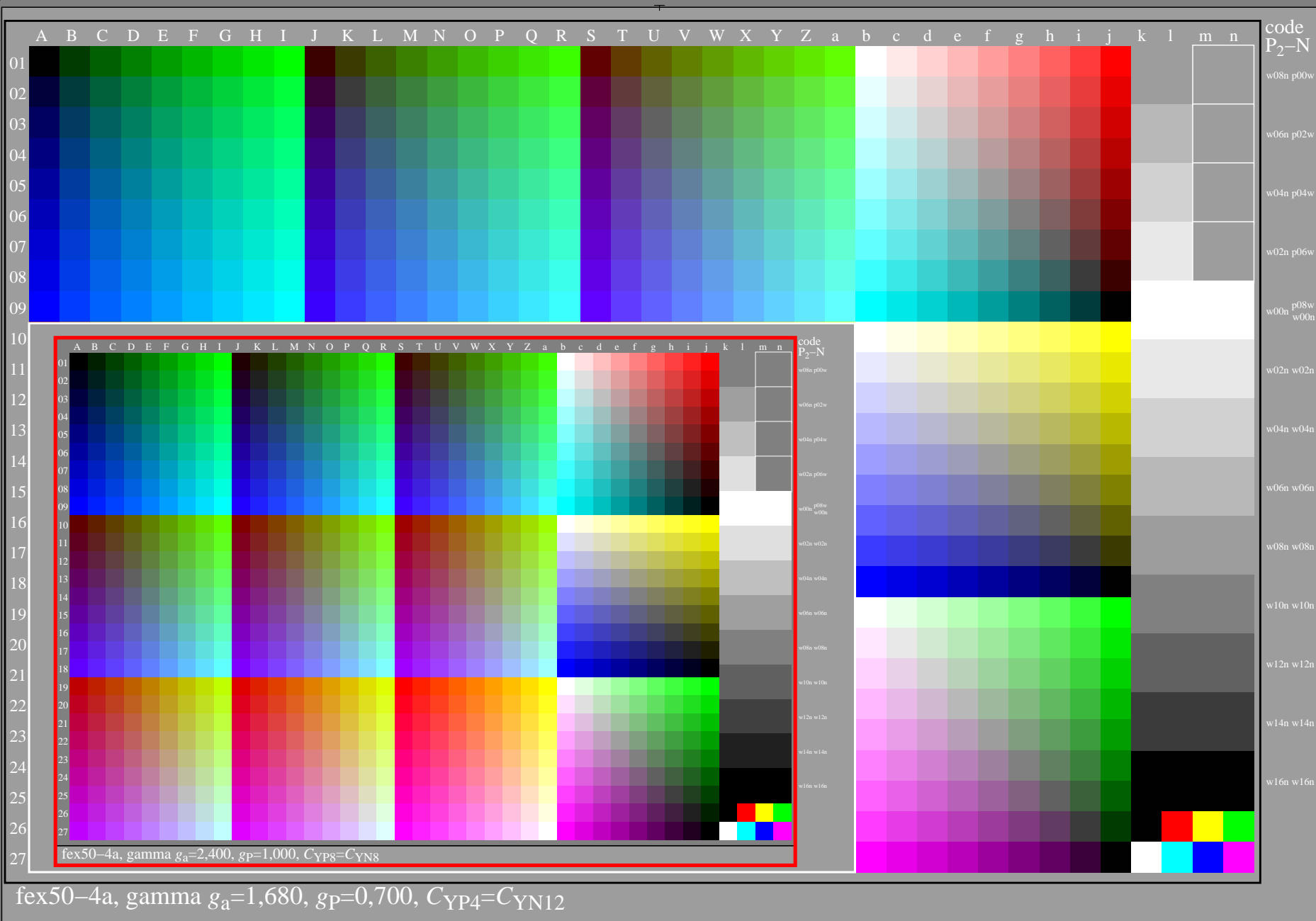
fex50-3a, gamma $g_a=1,500$, $g_p=0,625$, $C_{YP3}=C_{YN13}$

TUB-test chart fex5; Test charts with 5 and 9 step colours for linearized display output, Gamma optimization for 15 ambient display reflections according to ISO 9241-306; with image; $\gamma_{rel}=1,000$

<http://farbe.li.tu-berlin.de/fex5/fex510na.txt> /.ps; only vector graphic VG;
see separate images of this page: <http://farbe.li.tu-berlin.de/fex5/fex5.htm>

see similar files of the whole serie: <http://farbe.li.tu-berlin.de/fexs.htm>
technical information: <http://farbe.li.tu-berlin.de> or <http://color.li.tu-berlin.de>

TUB registration: 20240501-fex5/fex510na.txt /.ps
application for evaluation and measurement of display or print output
TUB material: code=th4ta



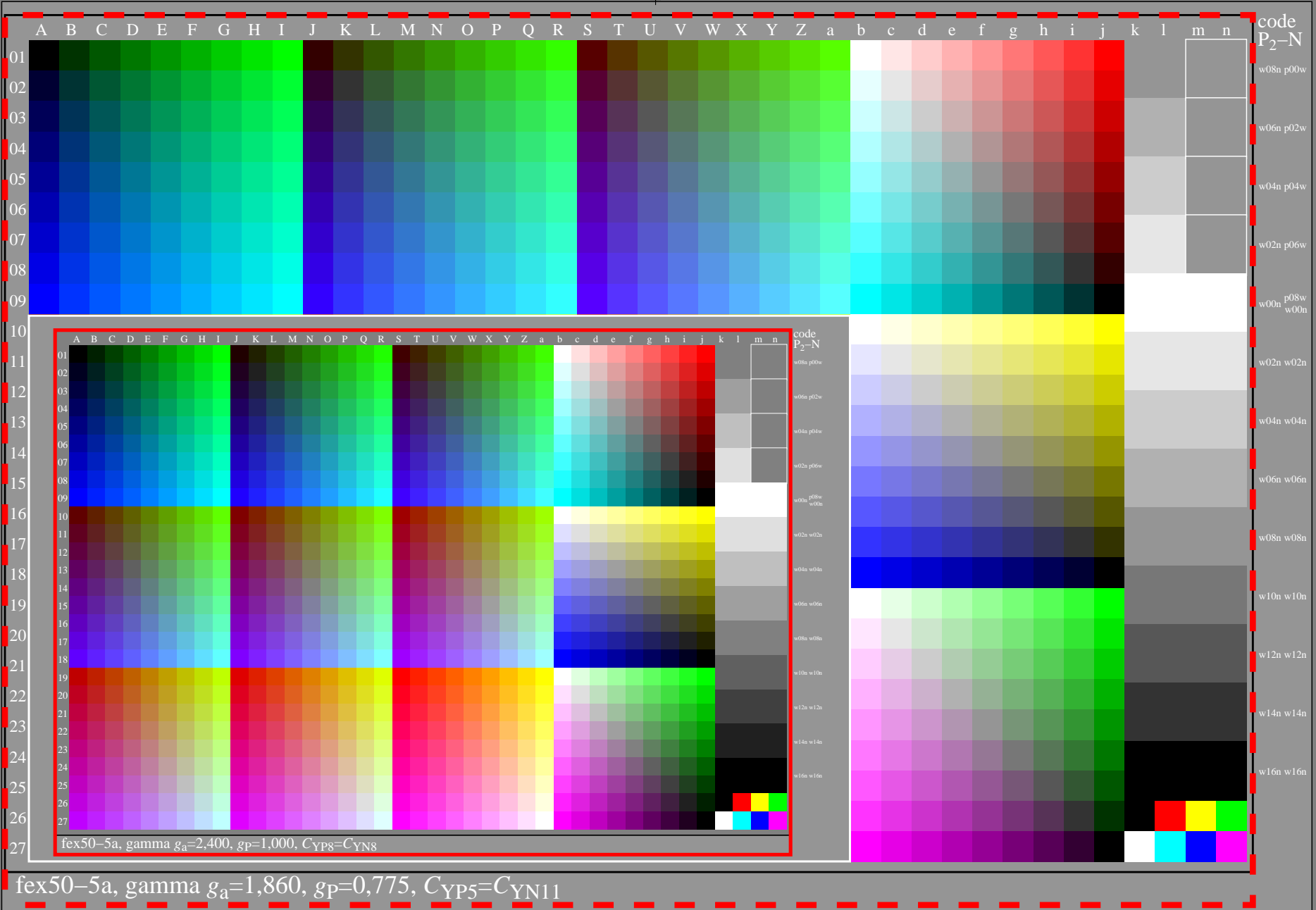
fex50-4a, gamma $g_a=1,680$, $g_p=0,700$, $C_{YP4}=C_{YN12}$

TUB-test chart fex5; Test charts with 5 and 9 step colours for linearized display output, Gamma optimization for 15 ambient display reflections according to ISO 9241-306; with image; $\gamma_{rel}=1,000$

<http://farbe.li.tu-berlin.de/fex5/fex510na.txt> /.ps; only vector graphic VG;
see separate images of this page: <http://farbe.li.tu-berlin.de/fex5/fex5.htm>

see similar files of the whole serie: <http://farbe.li.tu-berlin.de/fexs.htm>
technical information: <http://farbe.li.tu-berlin.de> or <http://color.li.tu-berlin.de>

TUB registration: 20240501-fex5/fex510na.txt /.ps
application for evaluation and measurement of display or print output
TUB material: code=th4ta

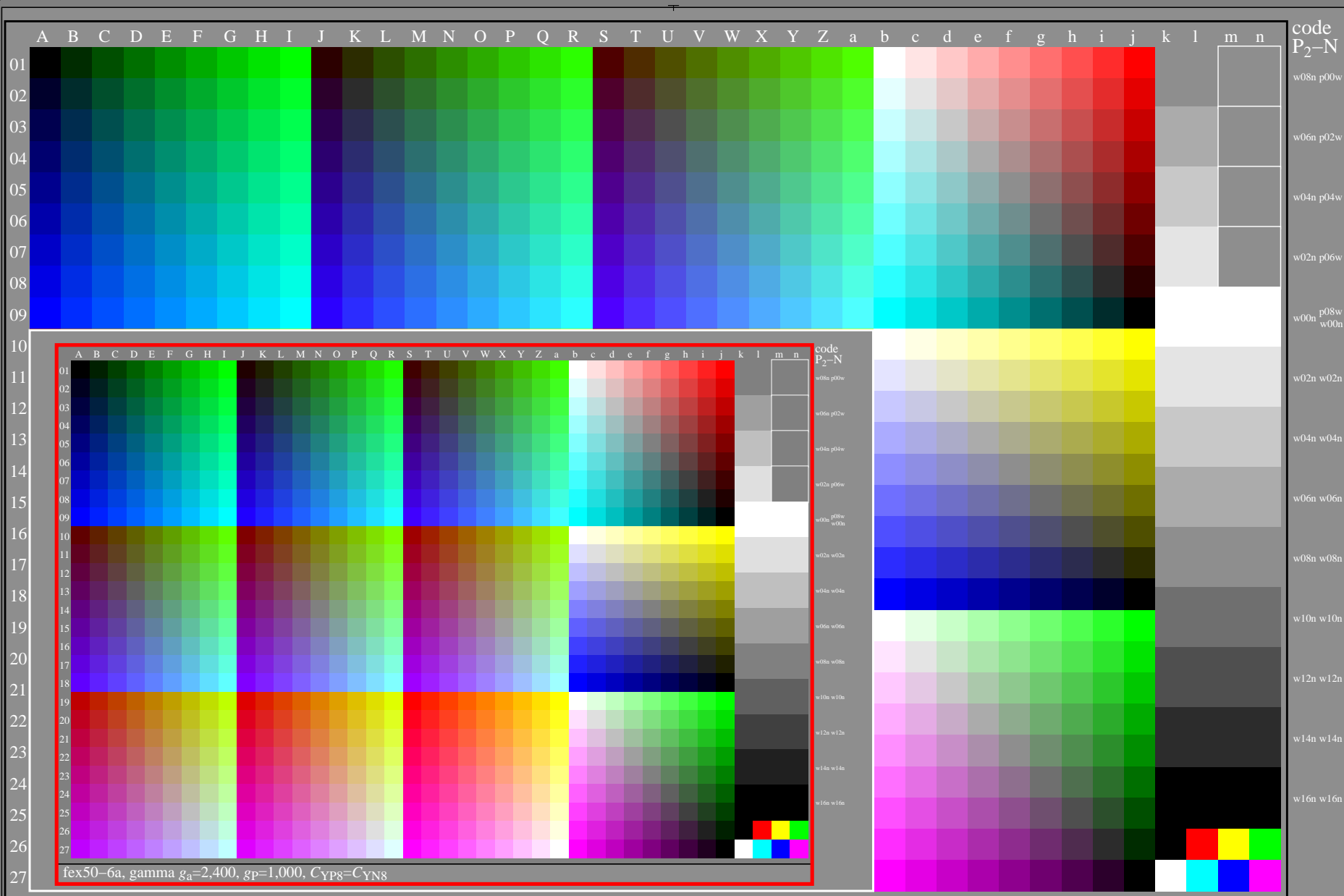


TUB-test chart fex5; Test charts with 5 and 9 step colours for linearized display output, Gamma optimization for 15 ambient display reflections according to ISO 9241-306; with image; $\gamma_{rel}=1,000$

<http://farbe.li.tu-berlin.de/fex5/fex510na.txt> / .ps; only vector graphic VG;
see separate images of this page: <http://farbe.li.tu-berlin.de/fex5/fex5.htm>

see similar files of the whole serie: <http://farbe.li.tu-berlin.de/fexs.htm>
technical information: <http://farbe.li.tu-berlin.de> or <http://color.li.tu-berlin.de>

TUB registration: 20240501-fex5/fex510na.txt / .ps
application for evaluation and measurement of display or print output
TUB material: code=th4ta



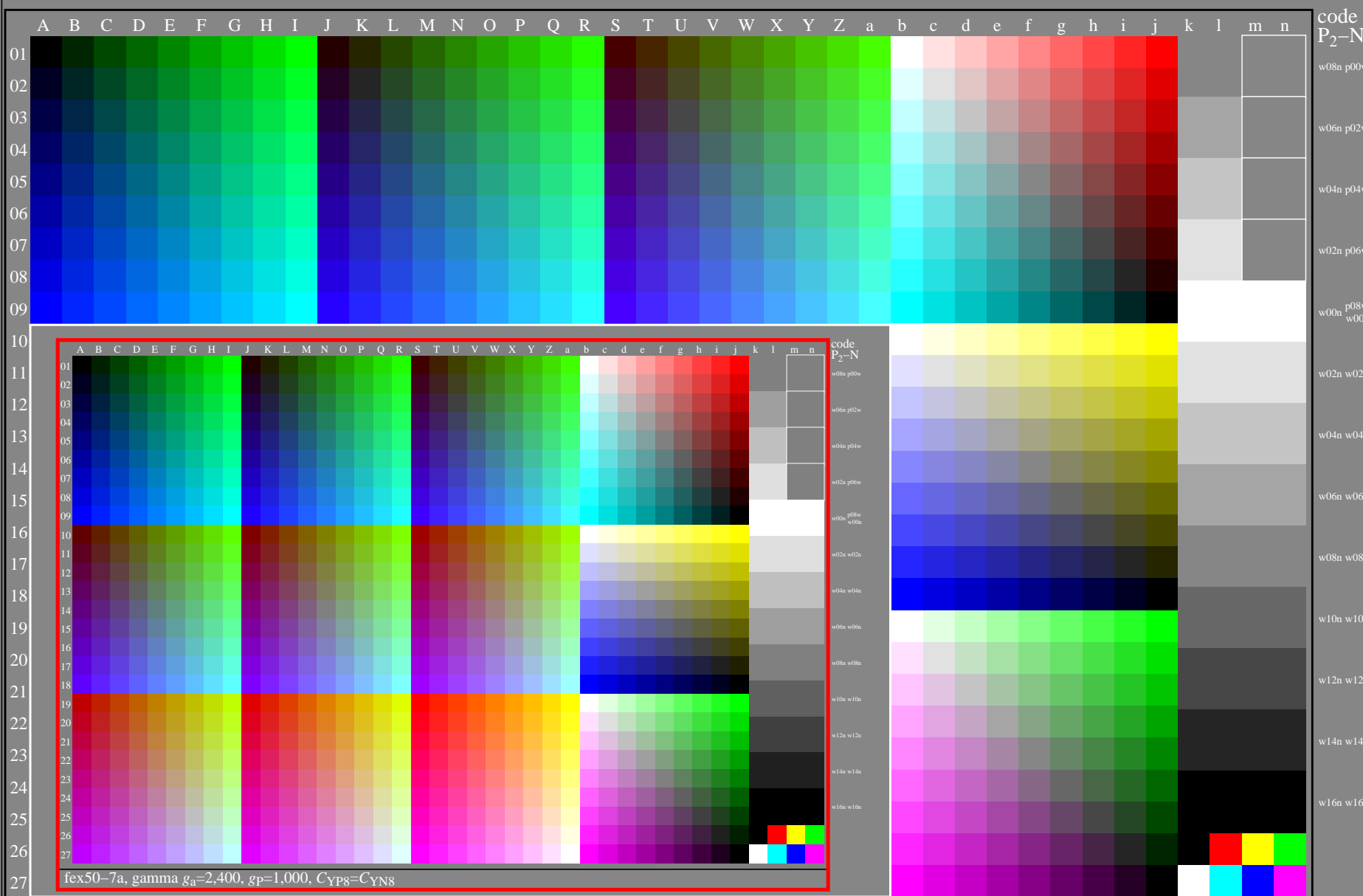
fex50-6a, gamma $g_a=2,037$, $g_p=0,849$, $C_{YP6}=C_{YN10}$

TUB-test chart fex5; Test charts with 5 and 9 step colours for linearized display output, Gamma optimization for 15 ambient display reflections according to ISO 9241-306; with image; $\gamma_{rel}=1,000$

<http://farbe.li.tu-berlin.de/fex5/fex510na.txt> / .ps; only vector graphic VG;
see separate images of this page: <http://farbe.li.tu-berlin.de/fex5/fex5.htm>

see similar files of the whole serie: <http://farbe.li.tu-berlin.de/fexs.htm>
technical information: <http://farbe.li.tu-berlin.de> or <http://color.li.tu-berlin.de>

TUB registration: 20240501-fex5/fex510na.txt / .ps
application for evaluation and measurement of display or print output
TUB material: code=th4ta



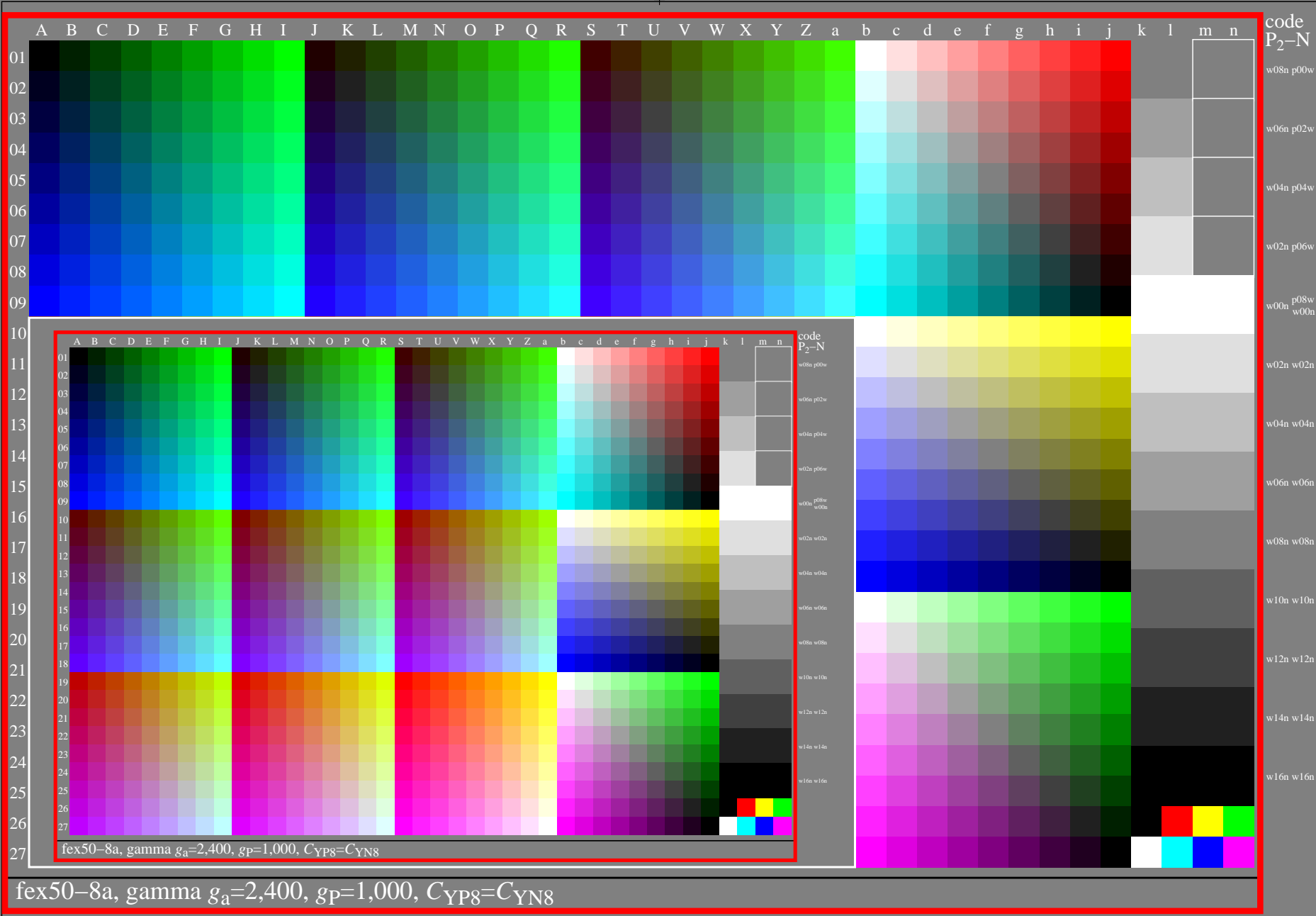
fex50-7a, gamma $g_a=2,217$, $g_p=0,924$, $C_{YP7}=C_{YN9}$

TUB-test chart fex5; Test charts with 5 and 9 step colours for linearized display output, Gamma optimization for 15 ambient display reflections according to ISO 9241-306; with image; $\gamma_{rel}=1,000$

<http://farbe.li.tu-berlin.de/fex5/fex510na.txt> / .ps; only vector graphic VG;
see separate images of this page: <http://farbe.li.tu-berlin.de/fex5/fex5.htm>

see similar files of the whole serie: <http://farbe.li.tu-berlin.de/fexs.htm>
technical information: <http://farbe.li.tu-berlin.de> or <http://color.li.tu-berlin.de>

TUB registration: 20240501-fex5/fex510na.txt / .ps
application for evaluation and measurement of display or print output
TUB material: code=th4ta

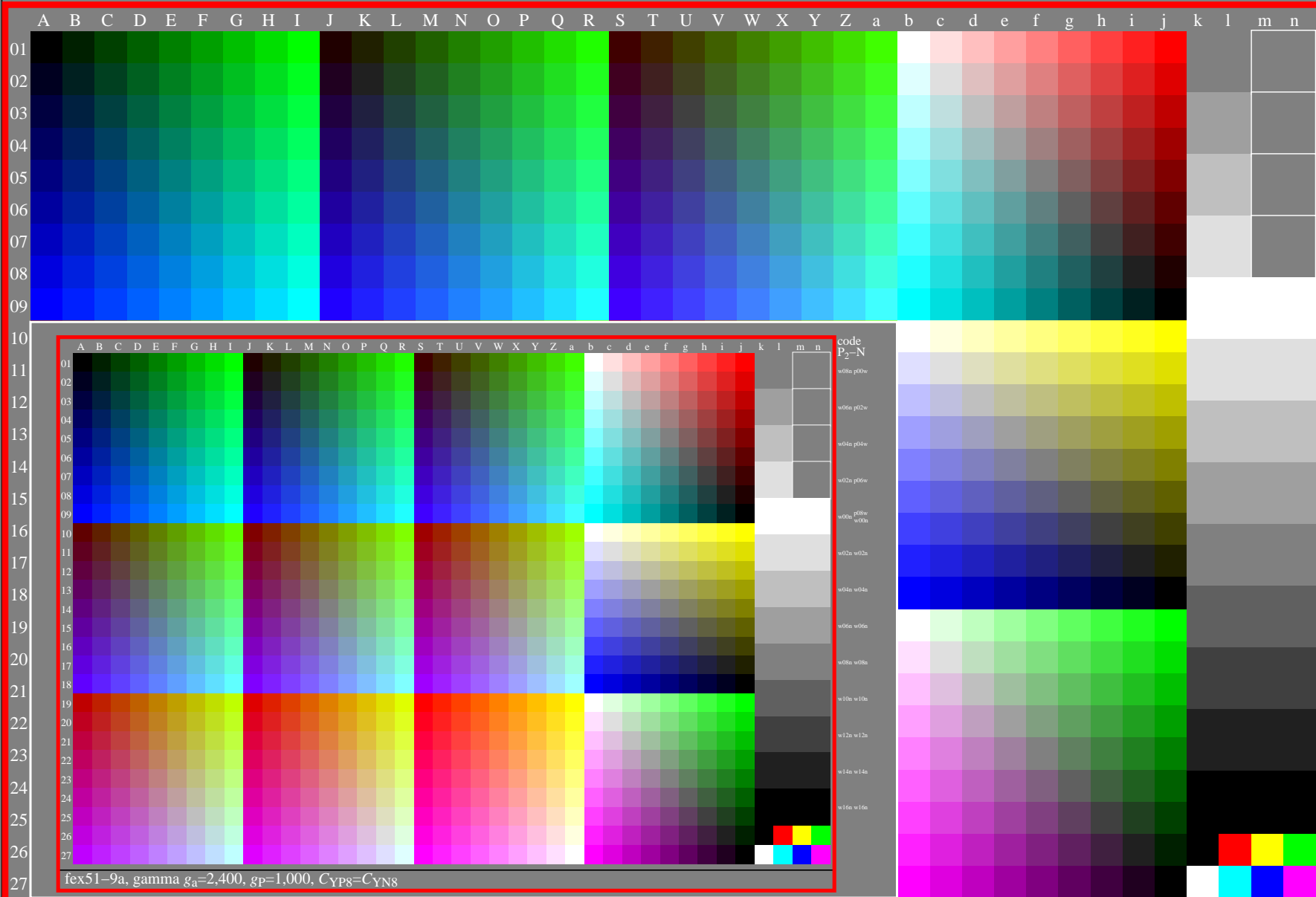


TUB-test chart fex5; Test charts with 5 and 9 step colours for linearized display output, Gamma optimization for 15 ambient display reflections according to ISO 9241-306; with image; $\gamma_{rel}=1,000$

<http://farbe.li.tu-berlin.de/fex5/fex510na.txt> / .ps; only vector graphic VG;
see separate images of this page: <http://farbe.li.tu-berlin.de/fex5/fex5.htm>

see similar files of the whole serie: <http://farbe.li.tu-berlin.de/fexs.htm>
technical information: <http://farbe.li.tu-berlin.de> or <http://color.li.tu-berlin.de>

TUB registration: 20240501-fex5/fex510na.txt / .ps
application for evaluation and measurement of display or print output
TUB material: code=th4ta



fex51-9a, gamma $g_a=2,400$, $g_p=1,000$, $C_{YP8}=C_{YN8}$

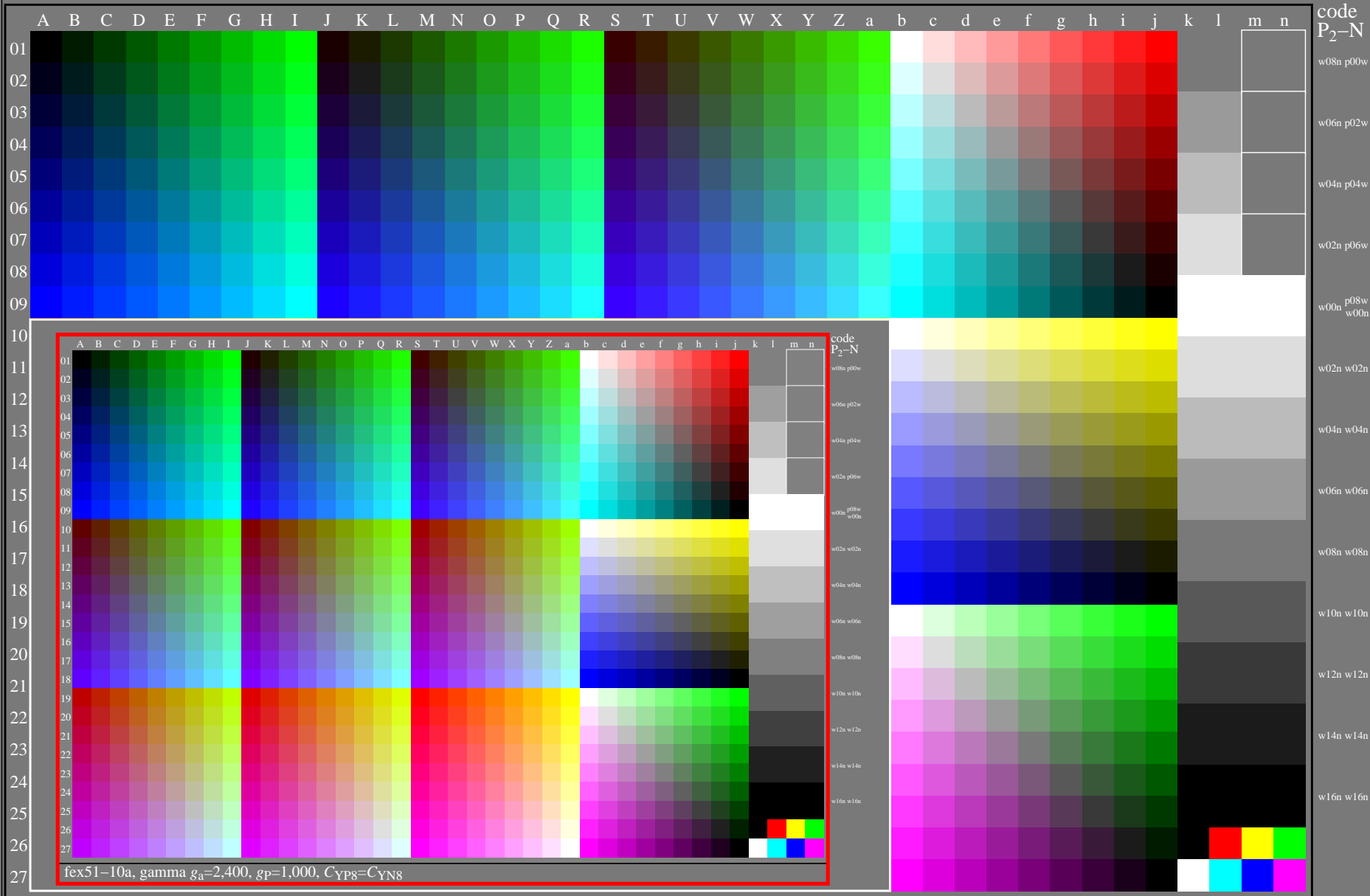
TUB-test chart fex5; Test charts with 5 and 9 step colours for linearized display output, Gamma optimization for 15 ambient display reflections according to ISO 9241-306; with image; $\gamma_{rel}=1,000$

<http://farbe.li.tu-berlin.de/fex5/fex510na.txt> / .ps; only vector graphic VG;
see separate images of this page: <http://farbe.li.tu-berlin.de/fex5/fex5.htm>

see similar files of the whole serie: <http://farbe.li.tu-berlin.de/fexs.htm>
technical information: <http://farbe.li.tu-berlin.de> or <http://color.li.tu-berlin.de>

TUB registration: 20240501-fex5/fex510na.txt / .ps
application for evaluation and measurement of display or print output

TUB material: code=th4ta



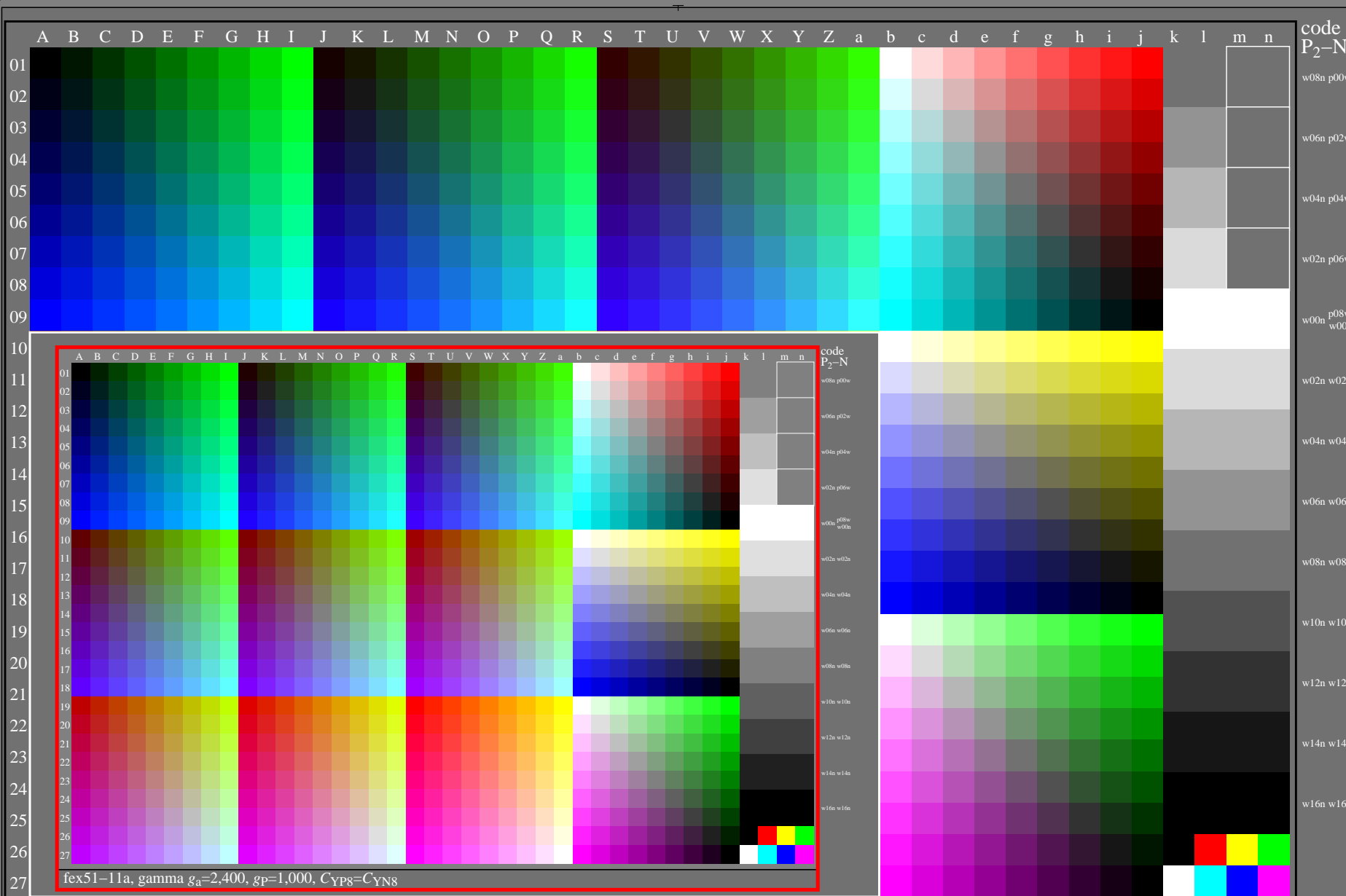
fex51-10a, gamma $g_a=2,594$, $g_p=1,081$, $C_{YP9}=C_{YN7}$

TUB-test chart fex5; Test charts with 5 and 9 step colours for linearized display output, Gamma optimization for 15 ambient display reflections according to ISO 9241-306; with image; $\gamma_{rel}=1,000$

<http://farbe.li.tu-berlin.de/fex5/fex510na.txt> / .ps; only vector graphic VG;
see separate images of this page: <http://farbe.li.tu-berlin.de/fex5/fex5.htm>

see similar files of the whole serie: <http://farbe.li.tu-berlin.de/fex5.htm>
technical information: <http://farbe.li.tu-berlin.de> or <http://color.li.tu-berlin.de>

TUB registration: 20240501-fex5/fex510na.txt / .ps
application for evaluation and measurement of display or print output
TUB material: code=th4ta



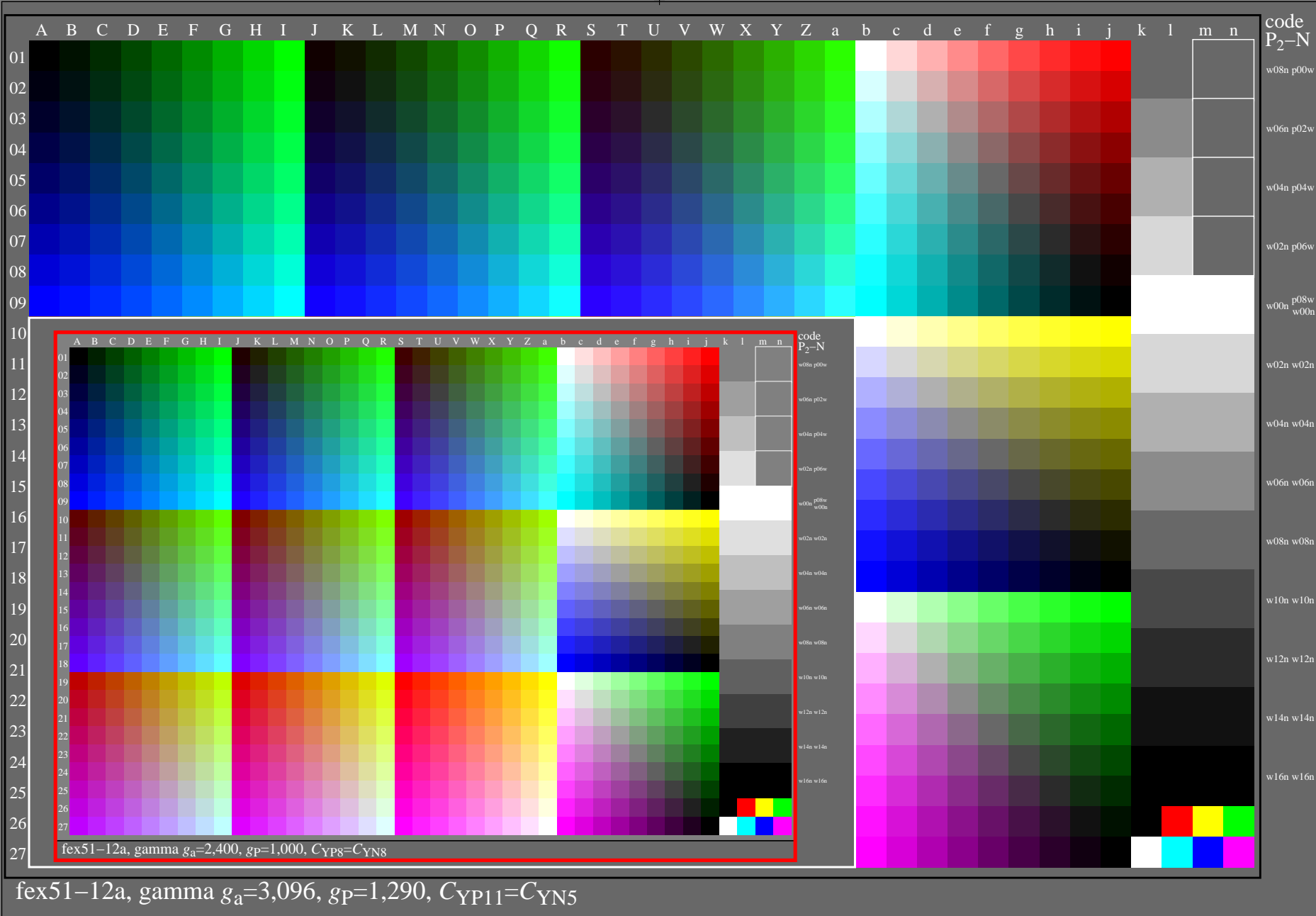
fex51-11a, gamma $g_a=2,822$, $g_p=1,176$, $C_{YP10}=C_{YN6}$

TUB-test chart fex5; Test charts with 5 and 9 step colours for linearized display output, Gamma optimization for 15 ambient display reflections according to ISO 9241-306; with image; $\gamma_{rel}=1,000$

<http://farbe.li.tu-berlin.de/fex5/fex510na.txt> / .ps; only vector graphic VG;
see separate images of this page: <http://farbe.li.tu-berlin.de/fex5/fex5.htm>

see similar files of the whole serie: <http://farbe.li.tu-berlin.de/fexs.htm>
technical information: <http://farbe.li.tu-berlin.de> or <http://color.li.tu-berlin.de>

TUB registration: 20240501-fex5/fex510na.txt / .ps
application for evaluation and measurement of display or print output
TUB material: code=th4ta

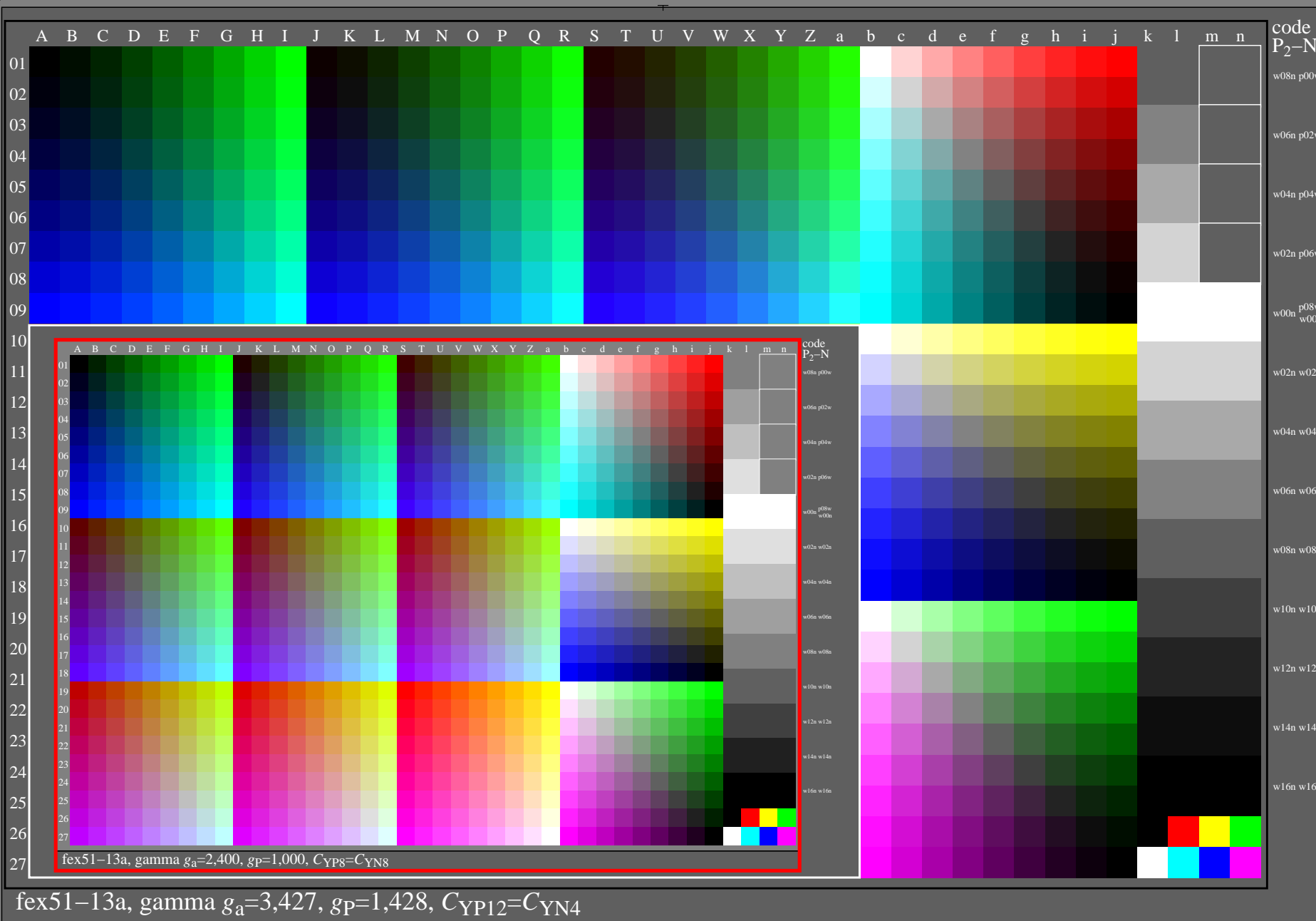


TUB-test chart fex5; Test charts with 5 and 9 step colours for linearized display output, Gamma optimization for 15 ambient display reflections according to ISO 9241-306; with image; $\gamma_{rel}=1,000$

<http://farbe.li.tu-berlin.de/fex5/fex510na.txt> / .ps; only vector graphic VG;
see separate images of this page: <http://farbe.li.tu-berlin.de/fex5/fex5.htm>

see similar files of the whole serie: <http://farbe.li.tu-berlin.de/fexs.htm>
technical information: <http://farbe.li.tu-berlin.de> or <http://color.li.tu-berlin.de>

TUB registration: 20240501-fex5/fex510na.txt / .ps
application for evaluation and measurement of display or print output
TUB material: code=th4ta

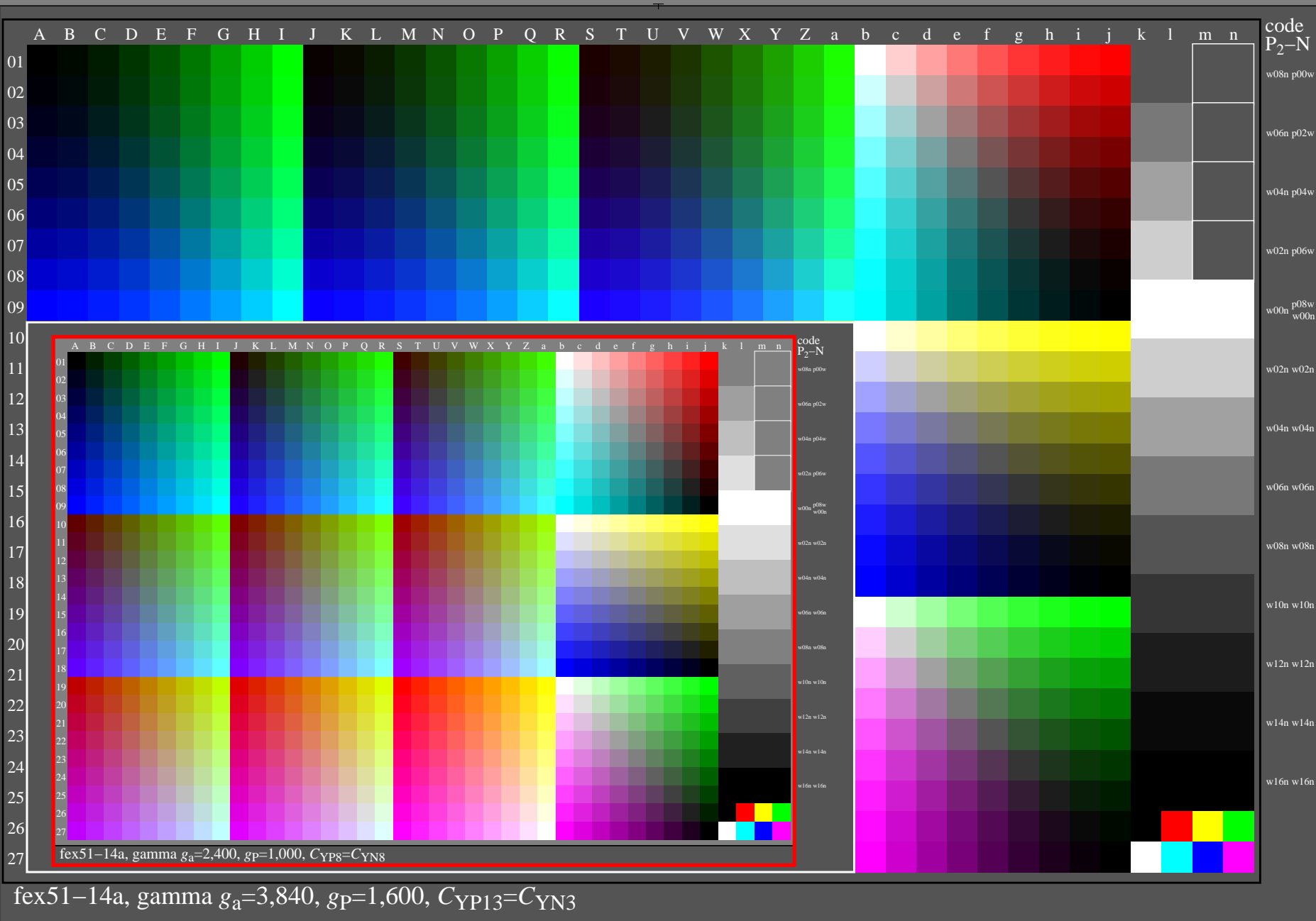


TUB-test chart fex5; Test charts with 5 and 9 step colours for linearized display output, Gamma optimization for 15 ambient display reflections according to ISO 9241-306; with image; $\gamma_{rel}=1,000$

<http://farbe.li.tu-berlin.de/fex5/fex510na.txt> / .ps; only vector graphic VG;
see separate images of this page: <http://farbe.li.tu-berlin.de/fex5/fex5.htm>

see similar files of the whole serie: <http://farbe.li.tu-berlin.de/fexs.htm>
technical information: <http://farbe.li.tu-berlin.de> or <http://color.li.tu-berlin.de>

TUB registration: 20240501-fex5/fex510na.txt / .ps
application for evaluation and measurement of display or print output
TUB material: code=th4ta



fex51-14a, gamma $g_a=3,840$, $g_p=1,600$, $C_{YP13}=C_{YN3}$

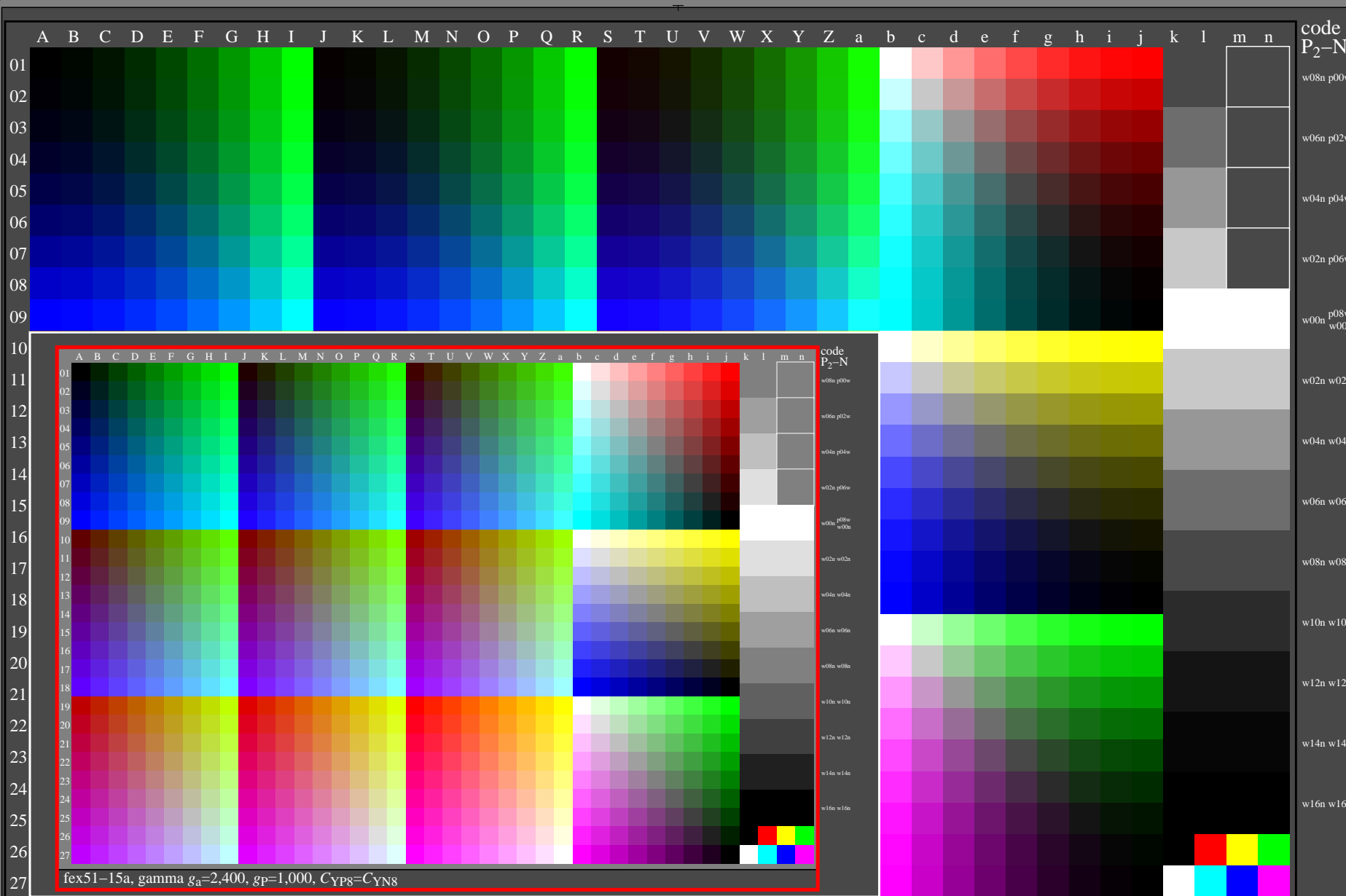
TUB-test chart fex5; Test charts with 5 and 9 step colours for linearized display output, Gamma optimization for 15 ambient display reflections according to ISO 9241-306; with image; $\gamma_{rel}=1,000$

<http://farbe.li.tu-berlin.de/fex5/fex510na.txt> / .ps; only vector graphic VG;
see separate images of this page: <http://farbe.li.tu-berlin.de/fex5/fex5.htm>

see similar files of the whole serie: <http://farbe.li.tu-berlin.de/fex5.htm>
technical information: <http://farbe.li.tu-berlin.de> or <http://color.li.tu-berlin.de>

TUB registration: 20240501-fex5/fex510na.txt / .ps
application for evaluation and measurement of display or print output

TUB material: code=rh4ta



fex51-15a, gamma $g_a=4,363$, $g_p=1,818$, $C_{YP14}=C_{YN2}$

fex51-15a, gamma $g_a=2,400$, $g_p=1,000$, $C_{YP8}=C_{YN8}$

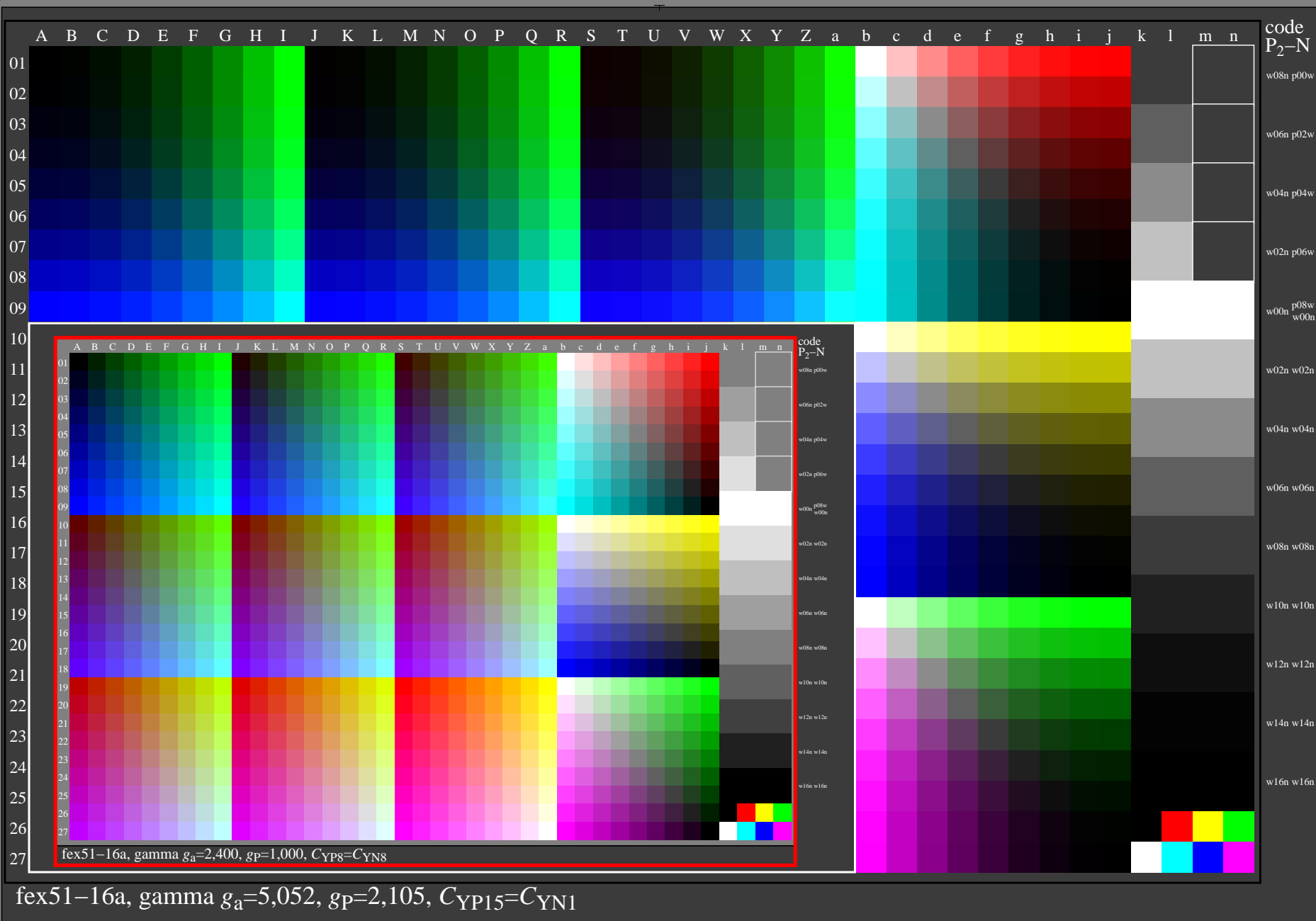
TUB-test chart fex5; Test charts with 5 and 9 step colours for linearized display output, Gamma optimization for 15 ambient display reflections according to ISO 9241-306; with image; $\gamma_{rel}=1,000$

1=0001400=F0

<http://farbe.li.tu-berlin.de/fex5/fex510na.txt> / .ps; only vector graphic VG;
see separate images of this page: <http://farbe.li.tu-berlin.de/fex5/fex5.htm>

see similar files of the whole serie: <http://farbe.li.tu-berlin.de/fexs.htm>
technical information: <http://farbe.li.tu-berlin.de> or <http://color.li.tu-berlin.de>

TUB registration: 20240501-fex5/fex510na.txt / .ps
application for evaluation and measurement of display or print output
TUB material: code=rh4ta



fex51-16a, gamma $g_a=5,052$, $g_p=2,105$, $C_{YP15}=C_{YN1}$

TUB-test chart fex5; Test charts with 5 and 9 step colours for linearized display output, Gamma optimization for 15 ambient display reflections according to ISO 9241-306; with image; $\gamma_{rel}=1,000$

1=0001500=F0