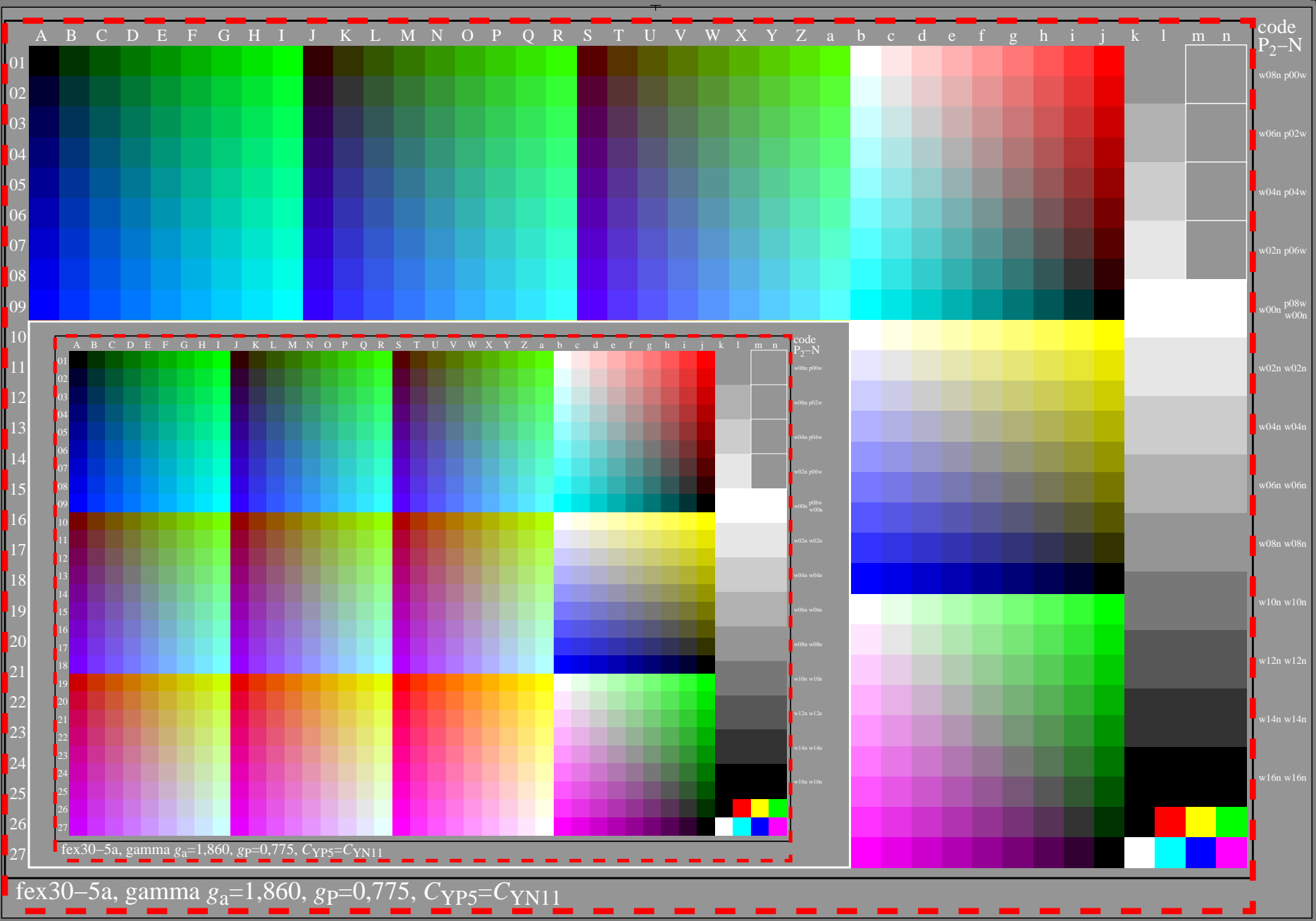


<http://farbe.li.tu-berlin.de/fex3/fex310na.txt> /.ps; only vector graphic VG;  
see separate images of this page: <http://farbe.li.tu-berlin.de/fex3/fex3.htm>

see similar files of the whole serie: <http://farbe.li.tu-berlin.de/fexs.htm>  
technical information: <http://farbe.li.tu-berlin.de> or <http://color.li.tu-berlin.de>

TUB registration: 20240501-fex3/fex310na.txt /.ps  
application for evaluation and measurement of display or print output  
TUB material: code=th4ta



fex30-5a, gamma  $g_a=1,860$ ,  $g_p=0,775$ ,  $C_{YP5}=C_{YN11}$

TUB-test chart fex3; Test charts with 5 and 9 step colours for linearized display output, Gamma optimization for 15 ambient display reflections according to ISO 9241-306; with image;  $\gamma_{rel}=1,000$