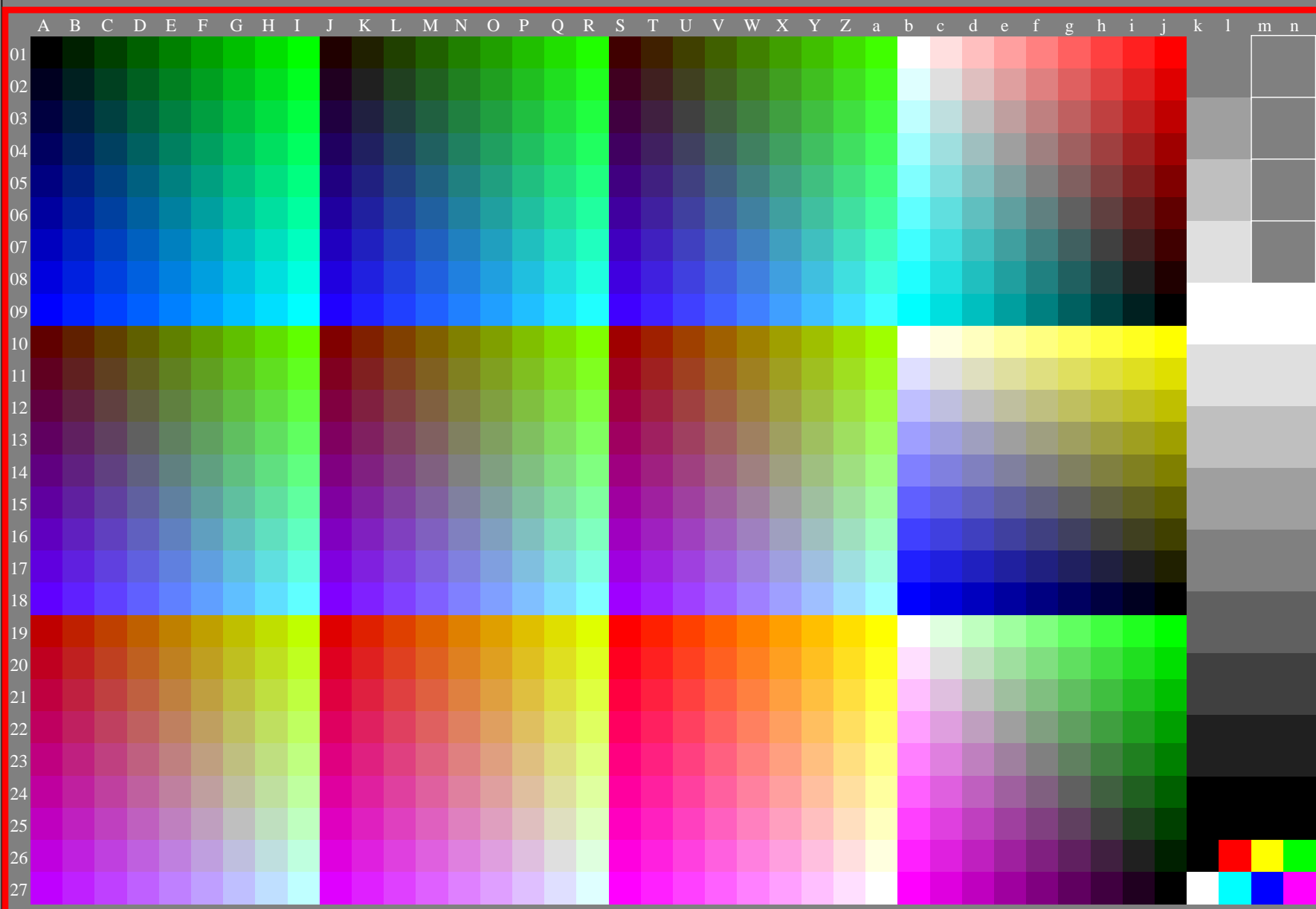


<http://farbe.li.tu-berlin.de/fex0/fex010na.txt> /ps; only vector graphic VG;
see separate images of this page: <http://farbe.li.tu-berlin.de/fex0/fex0.htm>

see similar files of the whole series: <http://farbe.li.tu-berlin.de/fexs.htm>
technical information: <http://farbe.li.tu-berlin.de> or <http://color.li.tu-berlin.de>



code
 P_2-N
w08n p00w
w06n p02w
w04n p04w
w02n p06w
w00n p08w
w00n w00n
w02n w02n
w04n w04n
w06n w06n
w08n w08n
w10n w10n
w12n w12n
w14n w14n
w16n w16n

fex00-8a, gamma $g_a=2,400$, $g_p=1,000$, $C_{YP8}=C_{YN8}$

TUB-test chart fex0; Test charts with 5 and 9 step colours for linearized display output, Gamma optimization for 15 ambient display reflections according to ISO 9241-306; without image; $\gamma_{rel}=1,000$

TUB registration: 20240501-fex0/fex010na.txt /ps
application for evaluation and measurement of display or print output
TUB material: code=rh4ta