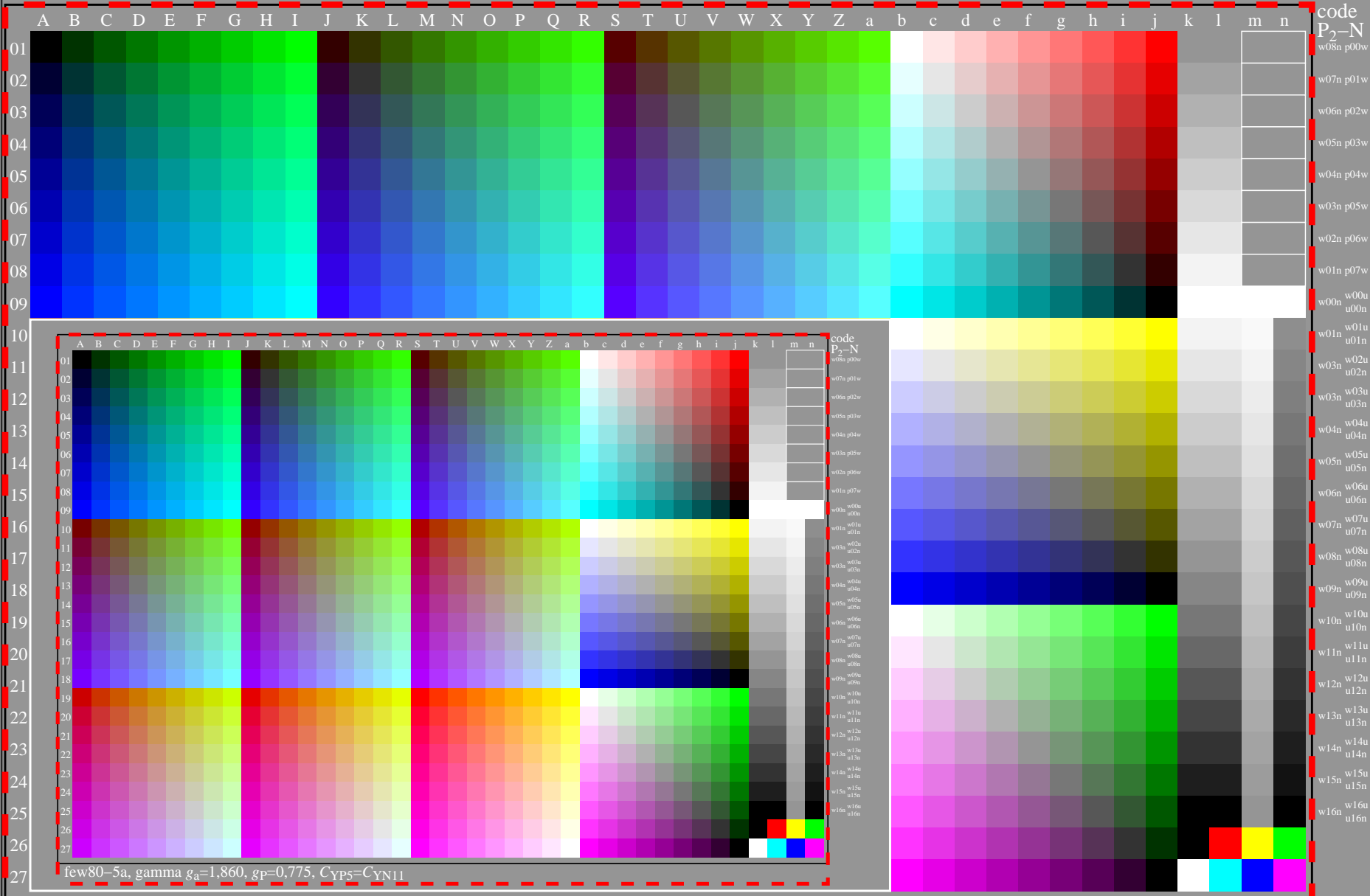


<http://farbe.li.tu-berlin.de/few8/few810na.txt> /.ps; only vector graphic VG;
see separate images of this page: <http://farbe.li.tu-berlin.de/few8/few8.htm>

see similar files of the whole serie: <http://farbe.li.tu-berlin.de/fews.htm>
technical information: <http://farbe.li.tu-berlin.de> or <http://color.li.tu-berlin.de>

TUB registration: 20240501-few8/few810na.txt /.ps
application for evaluation and measurement of display or print output
TUB material: code=th4ta



few80-5a, gamma $g_a=1,860$, $g_p=0,775$, $C_{YP5}=C_{YN11}$

few80-5a, gamma $g_a=1,860$, $g_p=0,775$, $C_{YP5}=C_{YN11}$

TUB-test chart few8; Test charts with 9 and 17 step colours for linearized display output, Gamma optimization for 15 ambient display reflections according to ISO 9241-306; with image; $\gamma_{rel}=1,000$