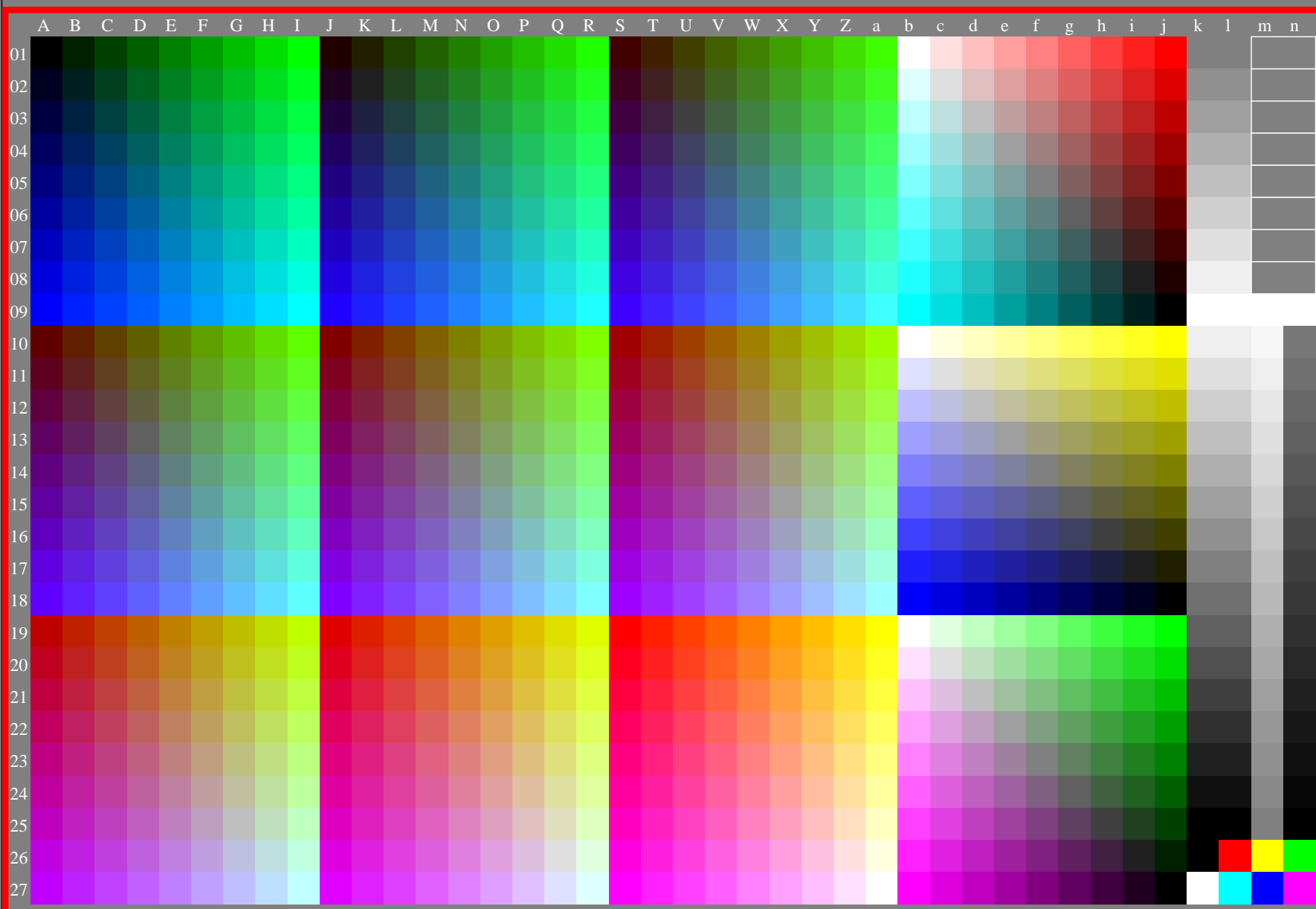


<http://farbe.li.tu-berlin.de/few5/few510na.txt> /.ps; only vector graphic VG;
see separate images of this page: <http://farbe.li.tu-berlin.de/few5/few5.htm>

see similar files of the whole series: <http://farbe.li.tu-berlin.de/fews.htm>
technical information: <http://farbe.li.tu-berlin.de> or <http://color.li.tu-berlin.de>



code
P₂-N
w08n p00w
w07n p01w
w06n p02w
w05n p03w
w04n p04w
w03n p05w
w02n p06w
w01n p07w
w00n w00u
u00n
w01n w01u
u01n
w03n w02u
u02n
w03n w03u
u03n
w04n w04u
u04n
w05n w05u
u05n
w06n w06u
u06n
w07n w07u
u07n
w08n w08u
u08n
w09n w09u
u09n
w10n w10u
u10n
w11n w11u
u11n
w12n w12u
u12n
w13n w13u
u13n
w14n w14u
u14n
w15n w15u
u15n
w16n w16u
u16n

few50-8a, gamma $g_a=2,400$, $g_p=1,000$, $C_{YP8}=C_{YN8}$

TUB-test chart few5; Test charts with 9 and 17 step colours for linearized display output, Gamma optimization for 15 ambient display reflections according to ISO 9241-306; without image; $\gamma_{rel}=1,000$

TUB registration: 20240501-few5/few510na.txt /.ps
application for evaluation and measurement of display or print output
TUB material: code=rh4ta