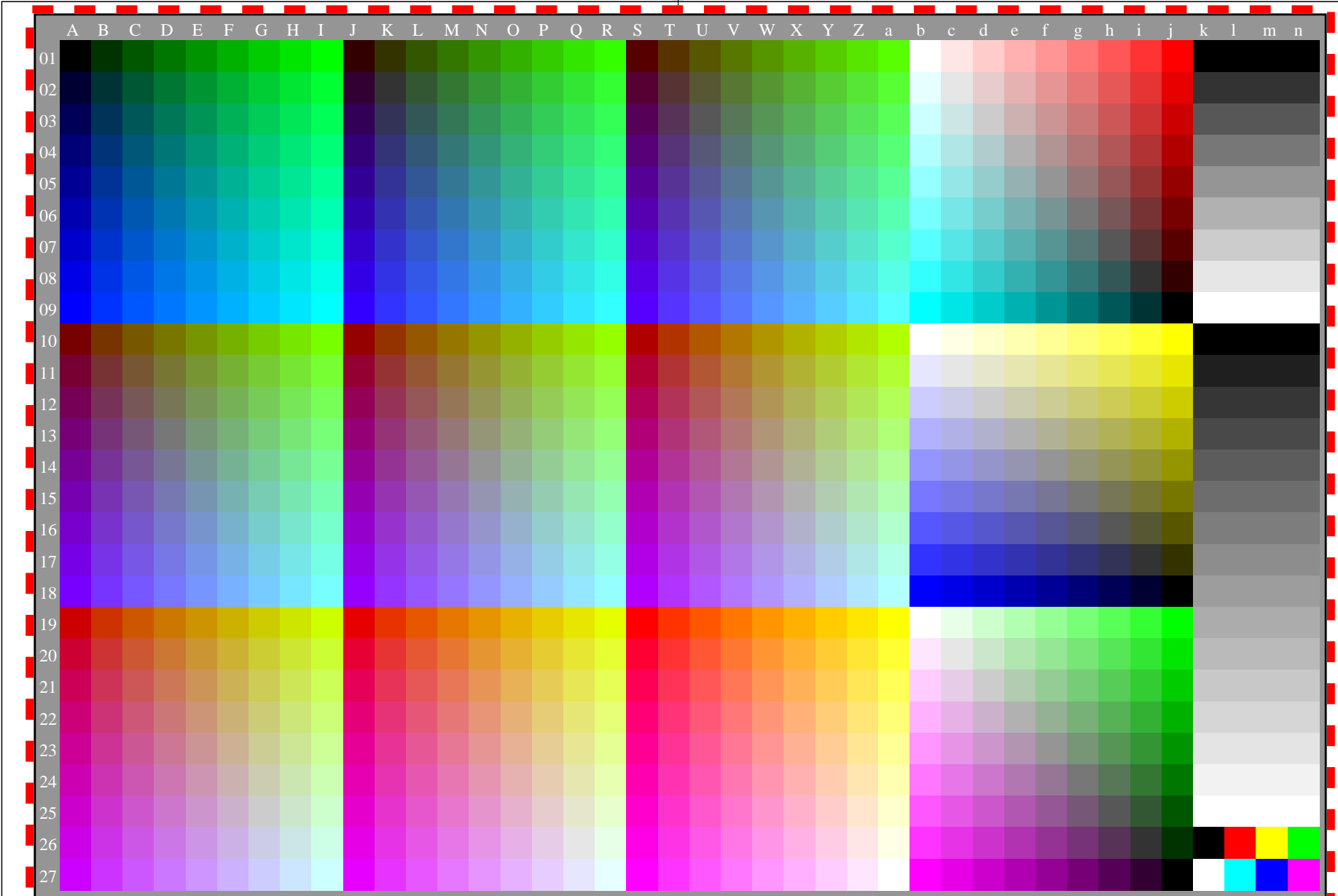


<http://farbe.li.tu-berlin.de/eem6/eem6l0na.txt> /.ps; only vector graphic VG; start output
compare TUB-test chart for 15 different γ_{rel} , <http://color.li.tu-berlin.de/eem4/eem4l0np.pdf>, page 1/1

see gamma software and links to ISO-test charts <http://color.li.tu-berlin.de/eem1/eem1l0np.pdf>
technical information: <http://farbe.li.tu-berlin.de> or <http://color.li.tu-berlin.de>

TUB registration: 20230615-eem6/eem6l0na.txt /.ps
application for evaluation and measurement of display or print output

TUB material: code=rh4ta



eem60-7n, gamma $g_a=1,860$, $g_p=0,775$, C_{YP5}

eem60-7n

TUB-test chart eem6; Test charts with 9 step colour series for ergonomic linearized display output
Gamma optimization for 15 ambient display reflections according to ISO 9241-306; 15 equal $\gamma_{rel}=1,000$

