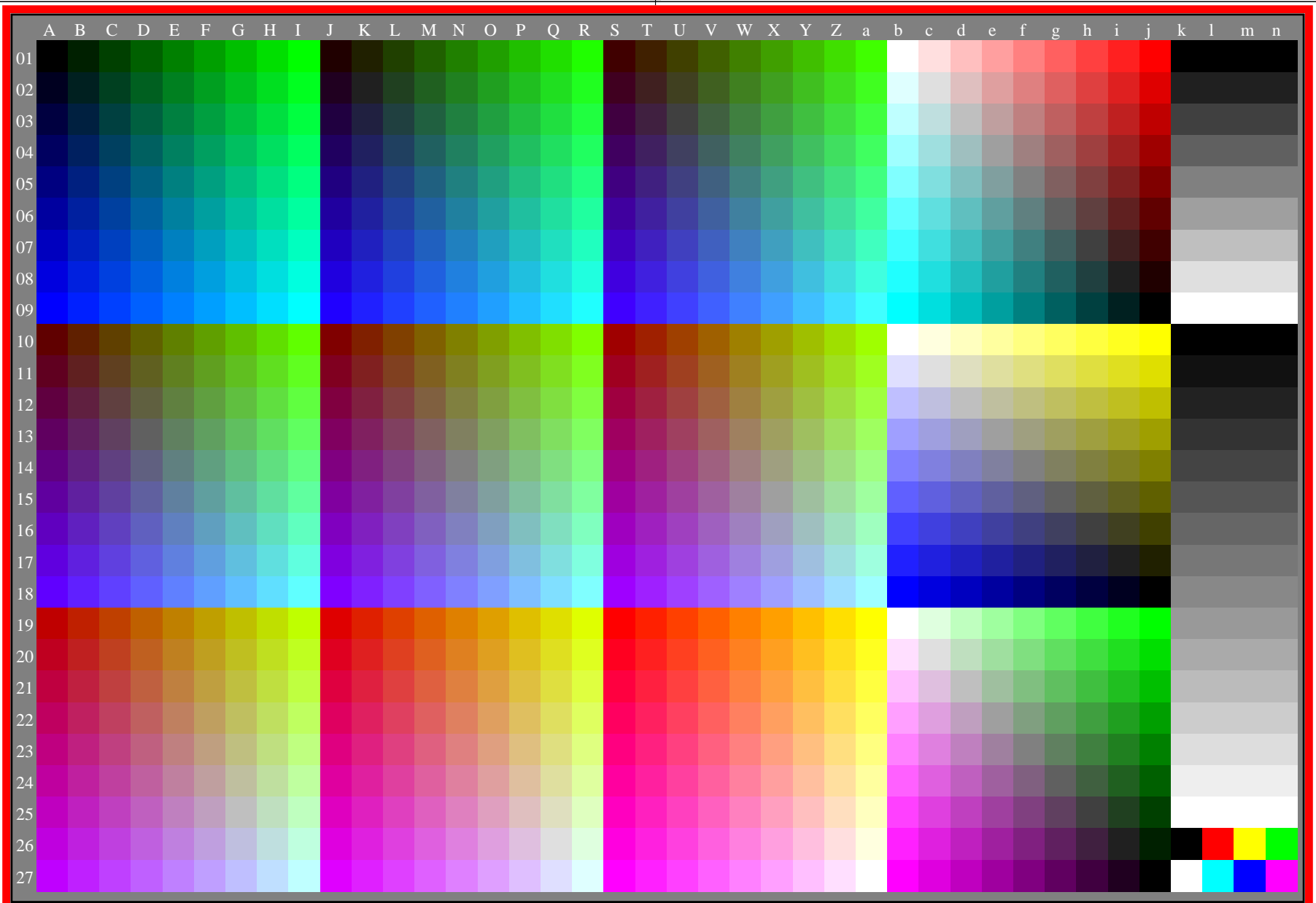


<http://farbe.li.tu-berlin.de/eem5/eem510na.txt> / .ps; only vector graphic VG; start output  
compare TUB-test chart for 15 different  $\gamma_{rel}$ , <http://color.li.tu-berlin.de/eem4/eem410np.pdf>, page 1/1

see gamma software and links to ISO-test charts <http://color.li.tu-berlin.de/eem1/eem110np.pdf>  
technical information: <http://farbe.li.tu-berlin.de> or <http://color.li.tu-berlin.de>

TUB registration: 20230615-eem5/eem510na.txt / .ps  
application for evaluation and measurement of display or print output  
TUB material: code=rhata4ta



eem50-7n, gamma  $g_a=2,400$ ,  $g_p=1,000$ ,  $C_{YP8}=C_{YN8}$ ,  $rgb^*$  &  $w^*$  data, 1080 colours

eem50-7n

TUB-test chart eem5; Test charts with 9 step colour series for ergonomic linearized display output  
Gamma optimization for 15 ambient display reflections according to ISO 9241-306;  $\gamma_{rel}=1,000$