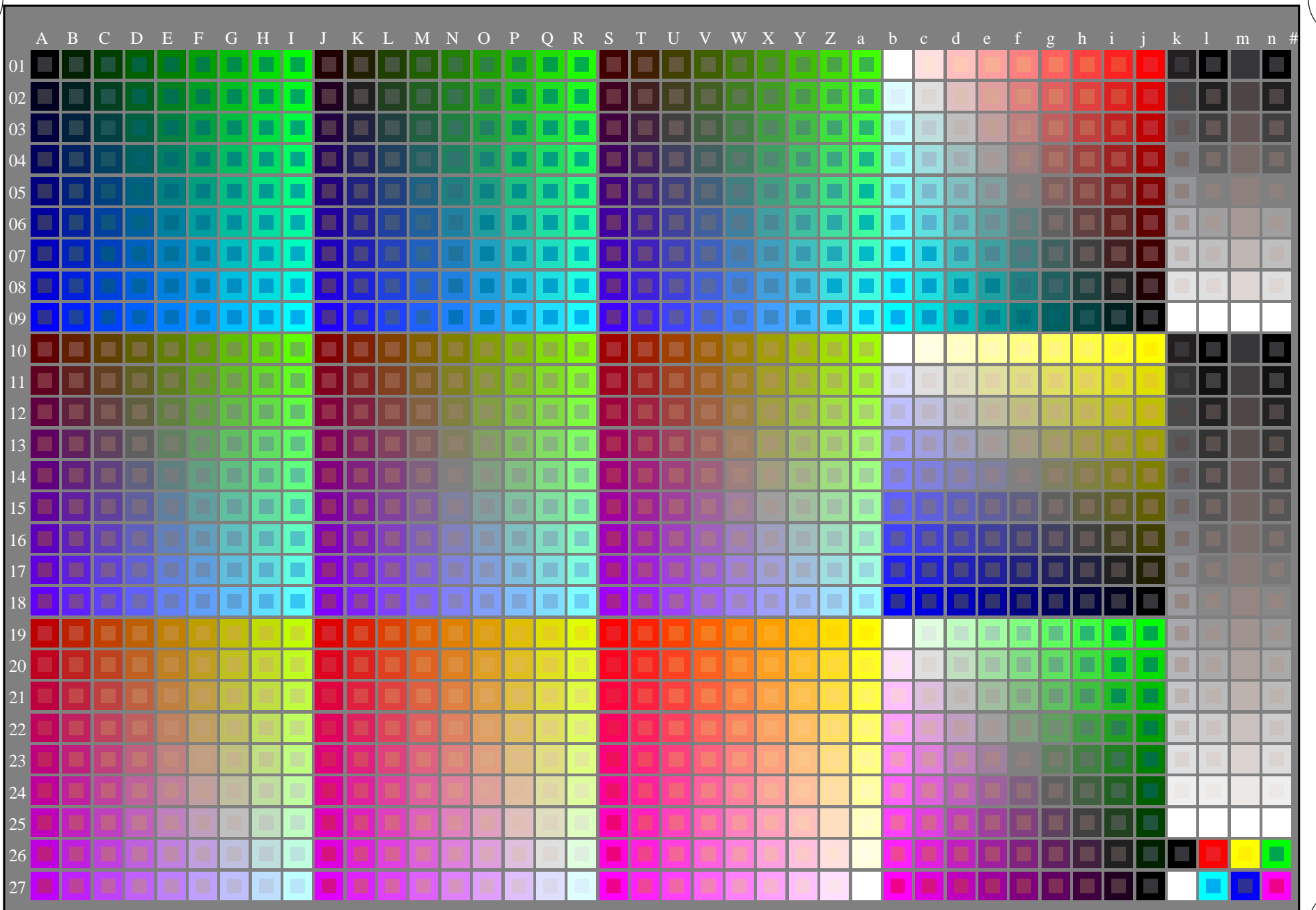


see similar files: <http://farbe.li.tu-berlin.de/ZE50/ZE50.HTM>
<http://130.149.60.45/~farbmetrik> or <http://farbe.li.tu-berlin.de>



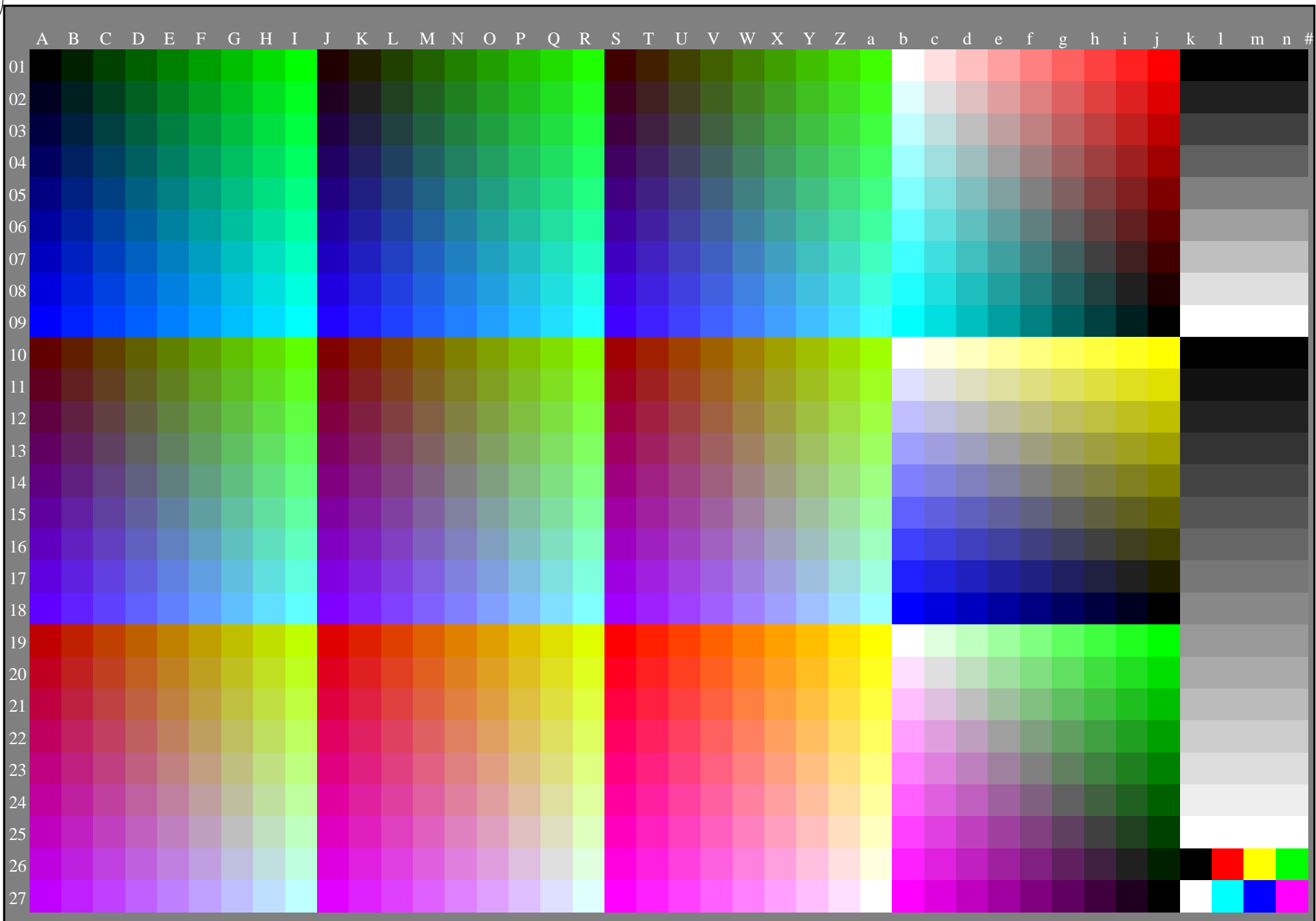
TUB registration: 20160101-ZE50/ZE50L0NP.PDF /.PS
application for measurement of laser printer output
TUB material: code=rh4ta

1-003030-L0 cmyn4 ZE500-70N Test chart G with 1080 colours; 9 or 16 step colour scales; data in column (A-n): **rgb** (A_j+k26_n27), **000n** (k), **w** (l), **nnn0** (m), **www** (n) + **cmyn0**(all)

TUB-test chart ZE50; test chart G of CIE R8-09:2015
1080 standard colours; image technology
input: *rgb/cmyk* -> *rgb/cmyk*
output: no change

see similar files: <http://farbe.li.tu-berlin.de/ZE50/ZE50.HTM>
<http://130.149.60.45/~farbmetrik> or <http://farbe.li.tu-berlin.de>

TUB registration: 20160101-ZE50/ZE50L0NP.PDF/.PS
application for measurement of laser printer output, separation cmyk6 (CMYK)
TUB material: code=rh4ta



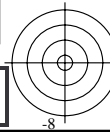
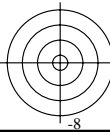
1-003130-L0 cmyk4

ZE500-710

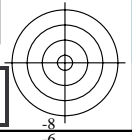
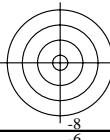
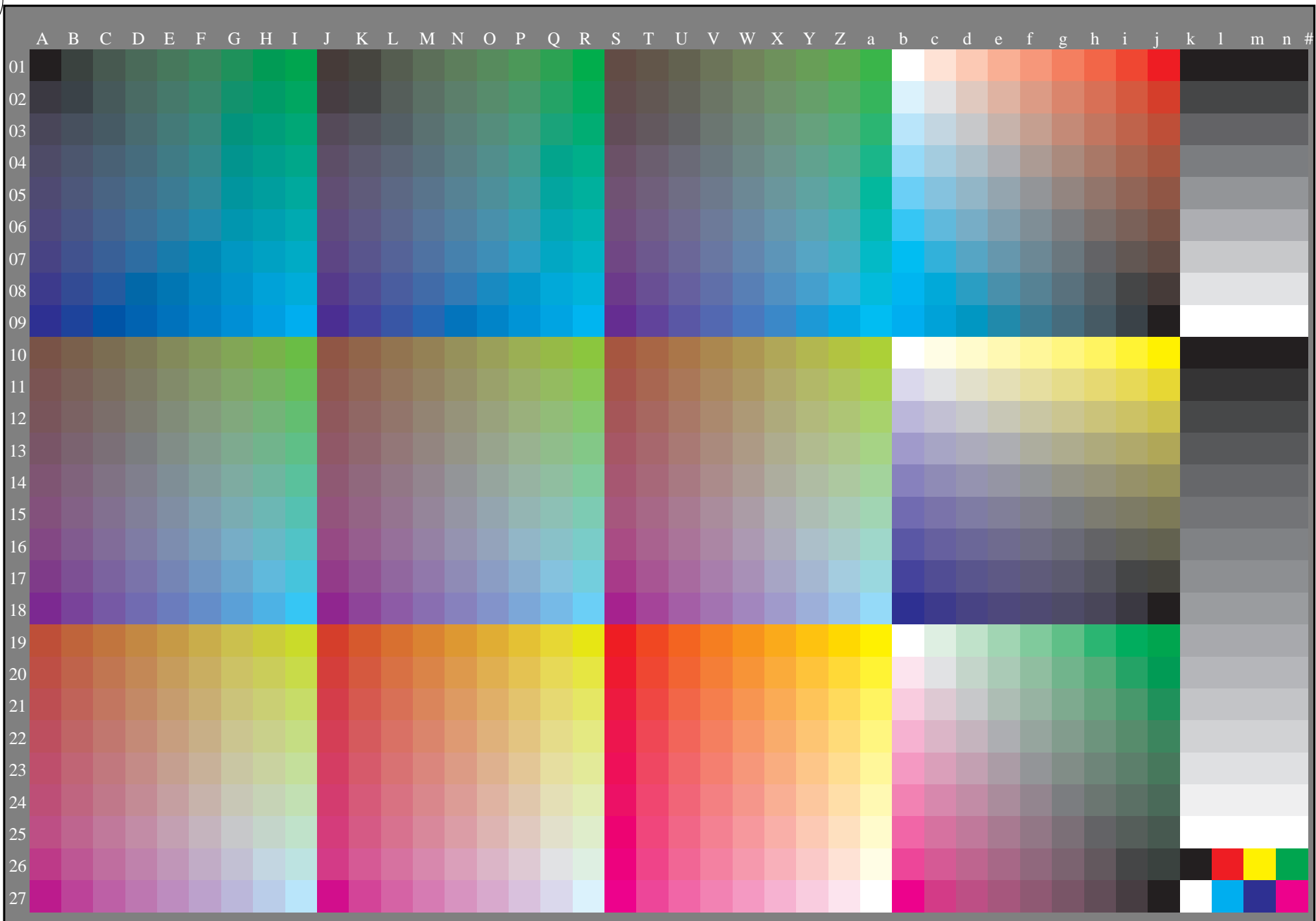
Test chart G with 1080 colours; 9 or 16 step colour scales; data in column (A-n): -> **rgb** (A-n)

TUB-test chart ZE50; test chart G of CIE R8-09:2015
1080 standard colours, 3D=0, de=0, *cmyk*

input: *rgb/cmyk* -> *rgb/cmyk*
output: transfer to *cmyk_d*



see similar files: <http://farbe.li.tu-berlin.de/ZE50/ZE50.HTM>
<http://130.149.60.45/~farbmetrik> or <http://farbe.li.tu-berlin.de>



1-003230-L0 cmyn4

ZE500-720

Test chart G with 1080 colours; 9 or 16 step colour scales; data in column (A-n): -> **cmyn4*** (A-n)

TUB-test chart ZE50; test chart G of CIE R8-09:2015
1080 standard colours, 3D=0, de=0, *cmyn*

input: *rgb/cmyk* -> *rgb/cmyk*
output: transfer to *cmyn_d*

TUB registration: 20160101-ZE50/ZE50L0NP.PDF/.PS
application for measurement of laser printer output, separation *cmyn6* (CMYK)
TUB material: code=rh4ta