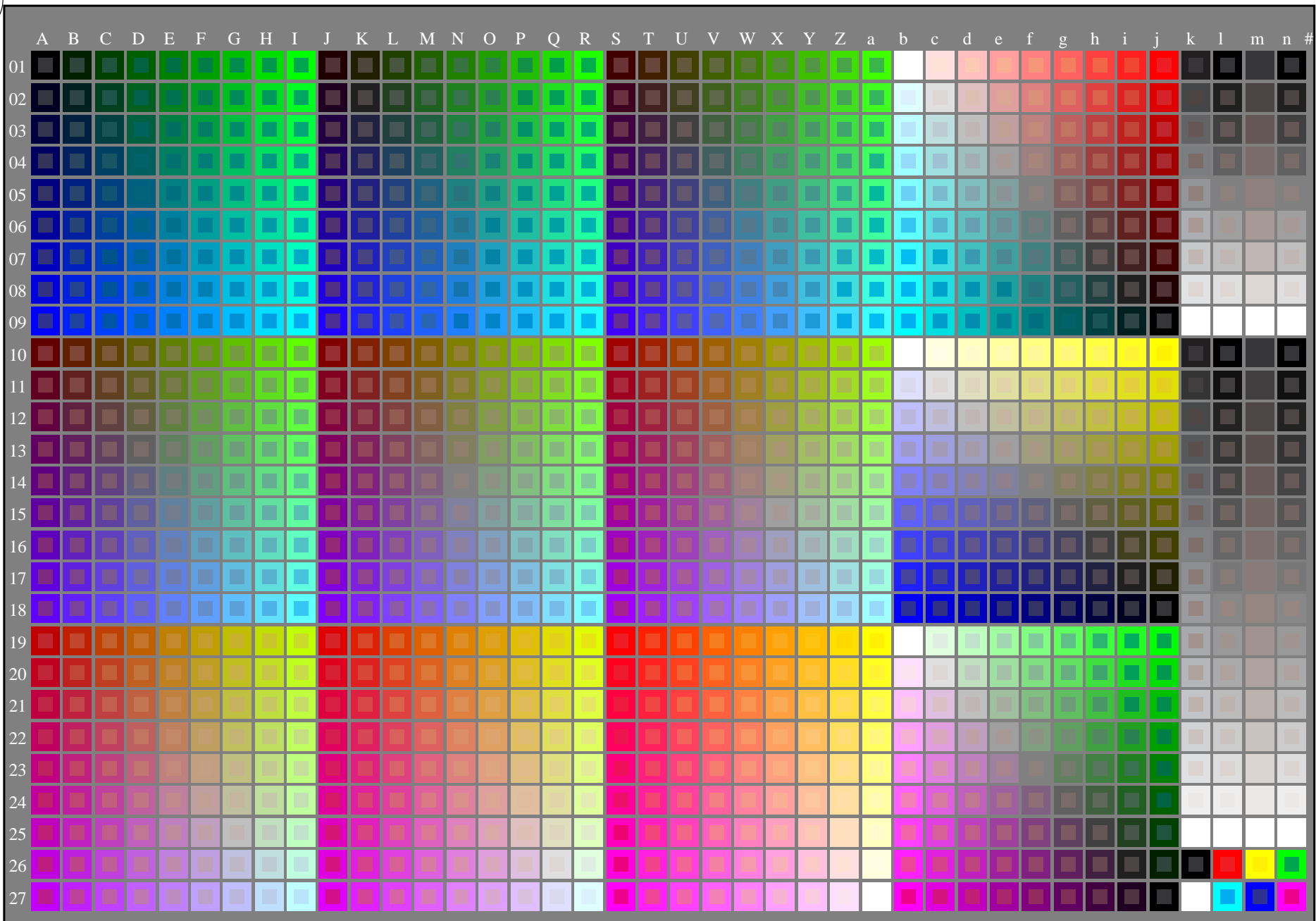


see similar files: <http://farbe.li.tu-berlin.de/ZE40/ZE40.HTM>
<http://130.149.60.45/~farbmetrik> or <http://farbe.li.tu-berlin.de>



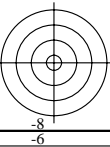
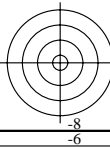
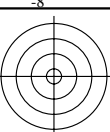
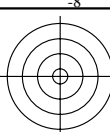
1-003030-L0 cmyn6 ZE400-70N Test chart G with 1080 colours; 9 or 16 step colour scales; data in column (A-n): **rgb** (A_j+k26_n27), **000n** (k), **w** (l), **nnn0** (m), **www** (n) + **cmny0**(all)

TUB-test chart ZE40; test chart G of CIE R8-09:2015
1080 standard colours; image technology

input: *rgb/cmyk* -> *rgb/cmyk*
output: no change

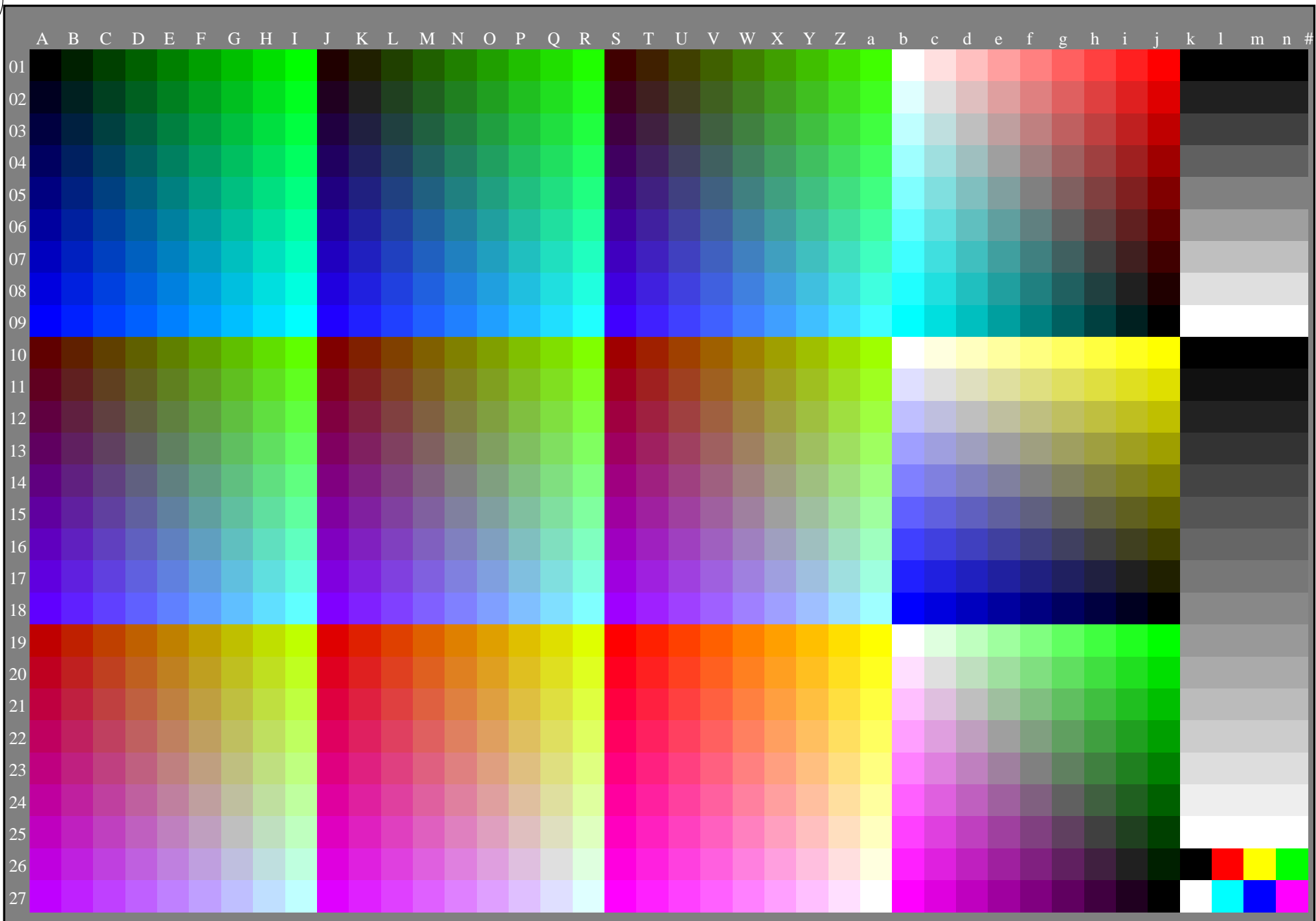
TUB registration: 20160101-ZE40/ZE40L0NP.PDF /.PS
application for measurement of laser printer output

TUB material: code=rh4ta



see similar files: <http://farbe.li.tu-berlin.de/ZE40/ZE40.HTM>
<http://130.149.60.45/~farbmetrik> or <http://farbe.li.tu-berlin.de>

TUB registration: 20160101-ZE40/ZE40L0NP.PDF/.PS
application for measurement of laser printer output, separation cmyk6 (CMYK)
TUB material: code=rh4ta



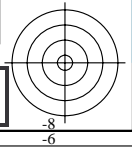
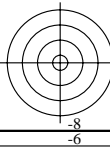
1-003130-L0 cmyk6

ZE400-710

Test chart G with 1080 colours; 9 or 16 step colour scales; data in column (A-n): -> rgb (A-n)

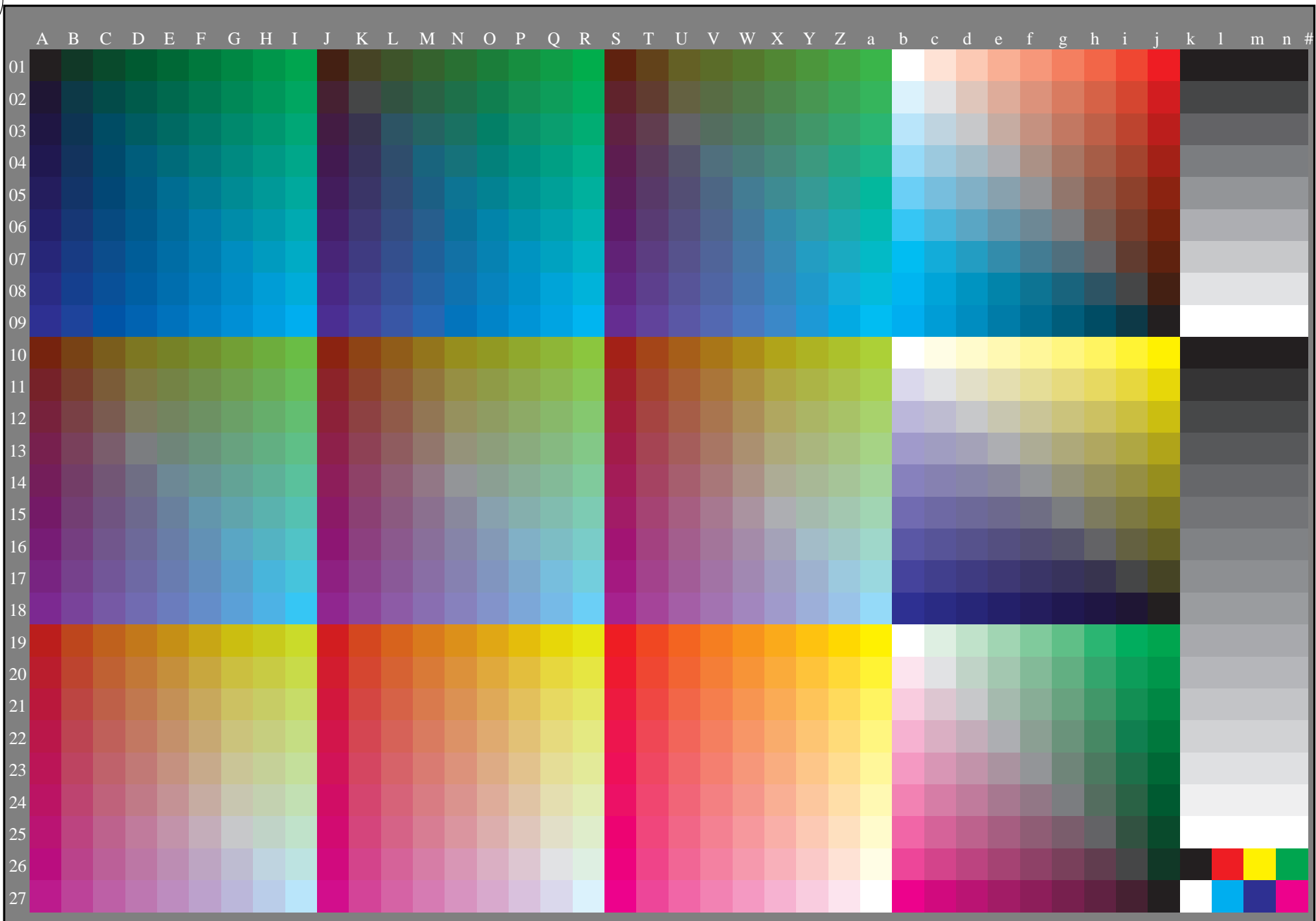
TUB-test chart ZE40; test chart G of CIE R8-09:2015
1080 standard colours, 3D=0, de=0, cmyk

input: *rgb/cmyk* -> *rgb/cmyk*
output: transfer to *cmyk_d*



see similar files: <http://farbe.li.tu-berlin.de/ZE40/ZE40.HTM>
<http://130.149.60.45/~farbmetrik> or <http://farbe.li.tu-berlin.de>

TUB registration: 20160101-ZE40/ZE40L0NP.PDF/.PS TUB material: code=rh4ta
application for measurement of laser printer output, separation cmykn6 (CMYK)



1-003230-L0 cmyn6 ZE400-720 Test chart G with 1080 colours; 9 or 16 step colour scales; data in column (A-n) -> cmyn6* (A-n)

TUB-test chart ZE40; test chart G of CIE R8-09:2015 input: *rgb/cmyk* -> *rgb/cmyk*
1080 standard colours, 3D=0, de=0, *cmyk* output: transfer to *cmyk_d*

