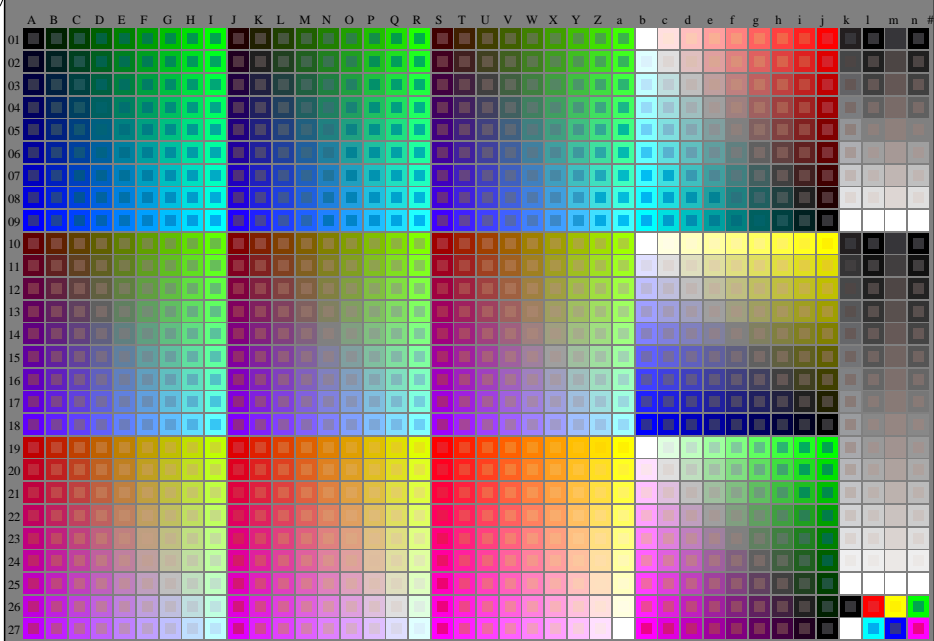


http://farbe.li.tu-berlin.de/ZE23/ZE23L0N1.TXT / .PS; start output  
N: no 3D-linearization (OL) in file (F) or PS-startup (S), page 1/1

see similar files: <http://farbe.li.tu-berlin.de/ZE23/ZE23.HTM>  
<http://130.149.60.45/~farmerrick> or <http://farbe.li.tu-berlin.de>



TUB registration: 20160101-ZE23/ZE23L0N1.TXT / .PS  
application for measurement of photo printer output

TUB material: code=rhatha

1-003030-1.0 cmyk6

ZE230-70N

Test chart G with 1080 colours; 9 or 16 step colour scales; data in column (A-n):  $rgb + cmyk0(A_j + k26_{n27}, 000n(k), w(l), nnn0(m), www(n))$

TUB-test chart ZE23; test chart G of CIE R8-09:2015  
1080 standard colours; image technology

input: *rgb/cmyk* -> *rgb/cmyk*  
output: no change

