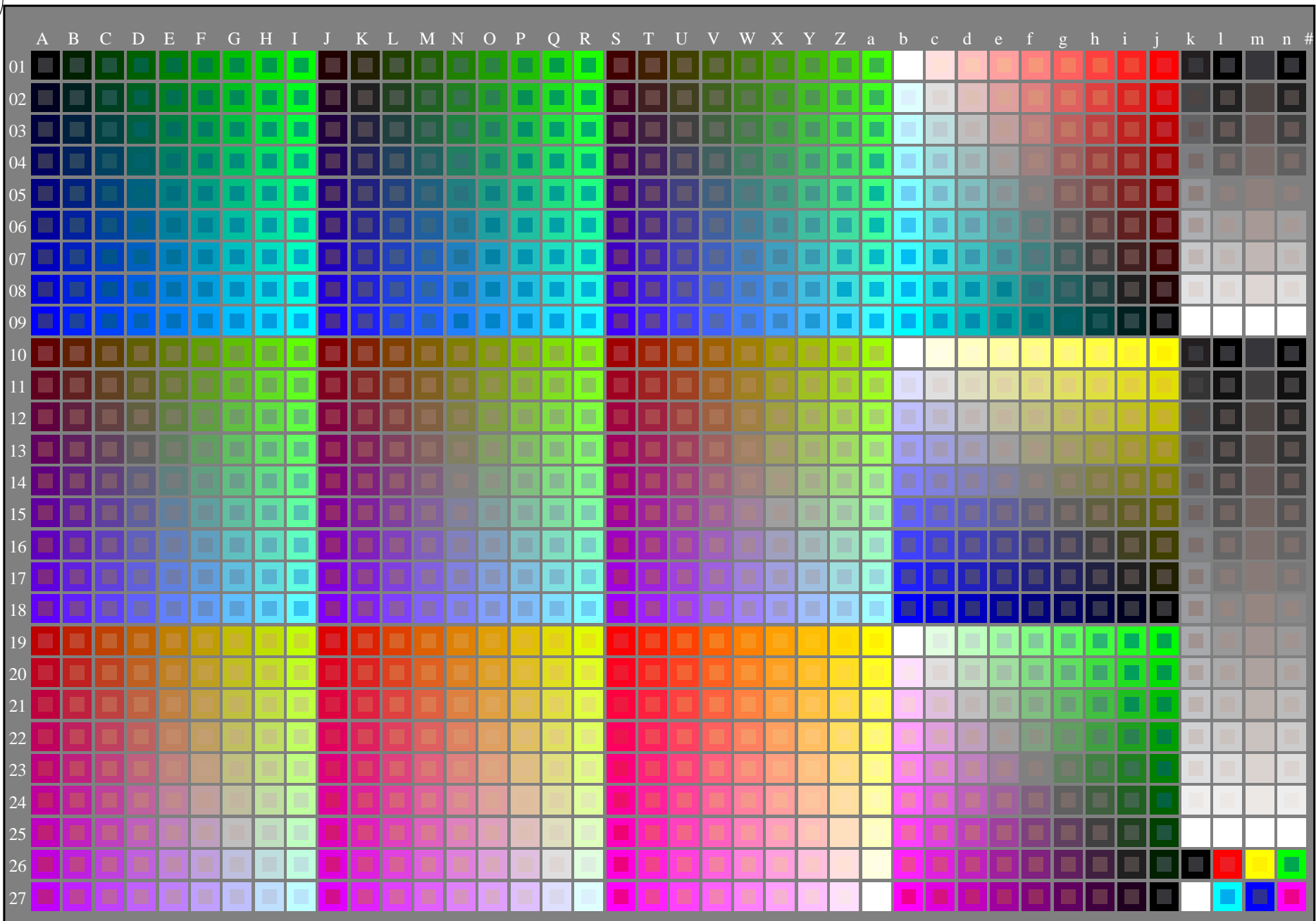


see similar files: <http://farbe.li.tu-berlin.de/ZE20/ZE20.HTM>  
<http://130.149.60.45/~farbmetrik> or <http://farbe.li.tu-berlin.de>



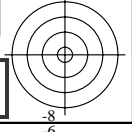
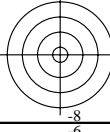
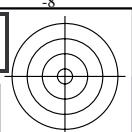
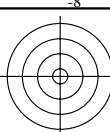
1-003030-L0 cmyn5      ZE200-70N      Test chart G with 1080 colours; 9 or 16 step colour scales; data in column (A-n): **rgb** (A\_j+k26\_n27), **000n** (k), **w** (l), **nnn0** (m), **www** (n) + **cmyn0**(all)

TUB-test chart ZE20; test chart G of CIE R8-09:2015  
1080 standard colours; image technology

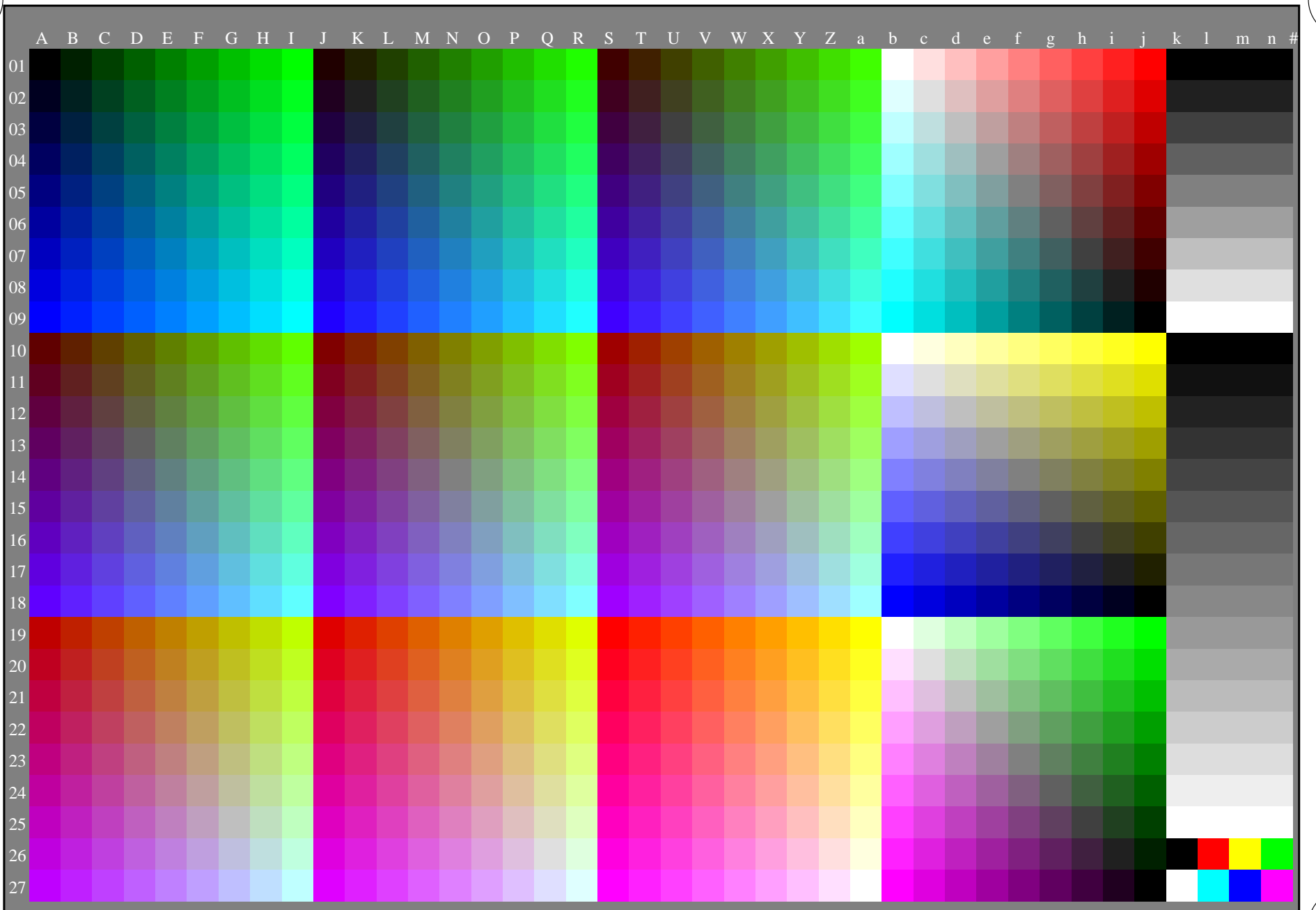
input: *rgb/cmyk* -> *rgb/cmyk*  
output: no change

TUB registration: 20160101-ZE20/ZE20L0NP.PDF /.PS  
application for measurement of laser printer output

TUB material: code=rh4ta



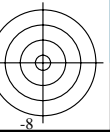
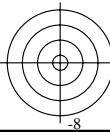
see similar files: <http://farbe.li.tu-berlin.de/ZE20/ZE20.HTM>  
<http://130.149.60.45/~farbmetrik> or <http://farbe.li.tu-berlin.de>



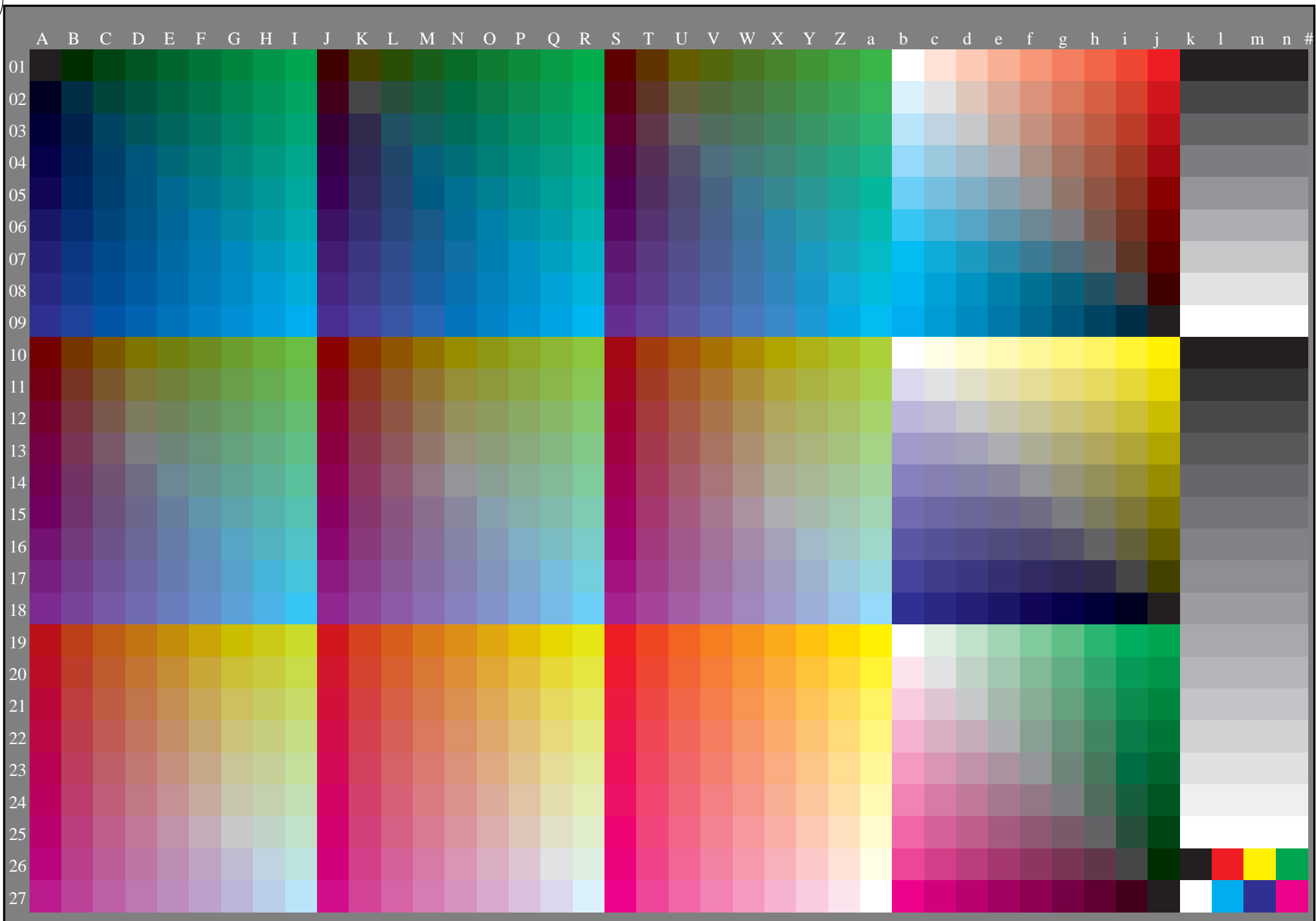
TUB registration: 20160101-ZE20/ZE20L0NP.PDF/.PS  
application for measurement of laser printer output, separation cmyk6 (CMYK)  
TUB material: code=rh4ta

1-003130-L0 cmyk5      ZE200-710      Test chart G with 1080 colours; 9 or 16 step colour scales; data in column (A-n): -> **rgb** (A-n)

TUB-test chart ZE20; test chart G of CIE R8-09:2015      input: *rgb/cmyk* -> *rgb/cmyk*  
1080 standard colours, 3D=0, de=0, *cmyk*      output: transfer to *cmyk<sub>d</sub>*



see similar files: <http://farbe.li.tu-berlin.de/ZE20/ZE20.HTM>  
<http://130.149.60.45/~farbmetrik> or <http://farbe.li.tu-berlin.de>



TUB registration: 20160101-ZE20/ZE20L0NP.PDF/.PS  
application for measurement of laser printer output, separation cmykn6 (CMYK)  
TUB material: code=rh4ta