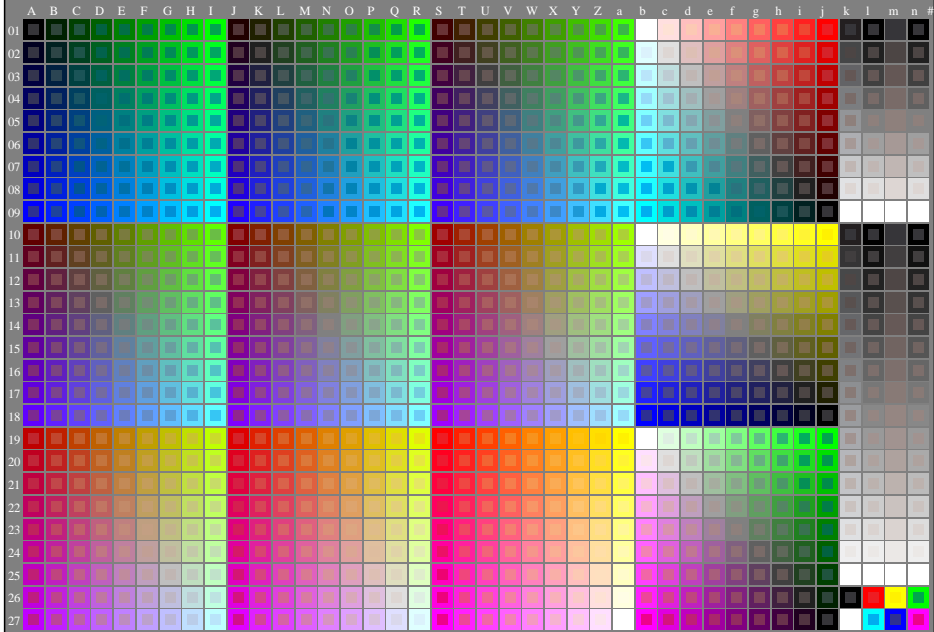


see similar files: <http://farbe.li.tu-berlin.de/ZE20/ZE20.HTM>  
<http://130.149.60.45/~farmmerik> or <http://farbe.li.tu-berlin.de>



TUB registration: 20160101-ZE20/ZE20L0N1.TXT / .PS  
application for measurement of laser printer output

TUB material: code=rhatha

1-003030-1.0 cmya5

ZE200-70N

Test chart G with 1080 colours; 9 or 16 step colour scales; data in column (A-s): *rgb* (A\_j+k26\_n27), *000n* (k), *w* (l), *nnn0* (m), *www* (n) + *cmy0*(all)

TUB-test chart ZE20; test chart G of CIE R8-09:2015  
1080 standard colours; image technology

input: *rgb/cmyk* -> *rgb/cmyk*  
output: no change

