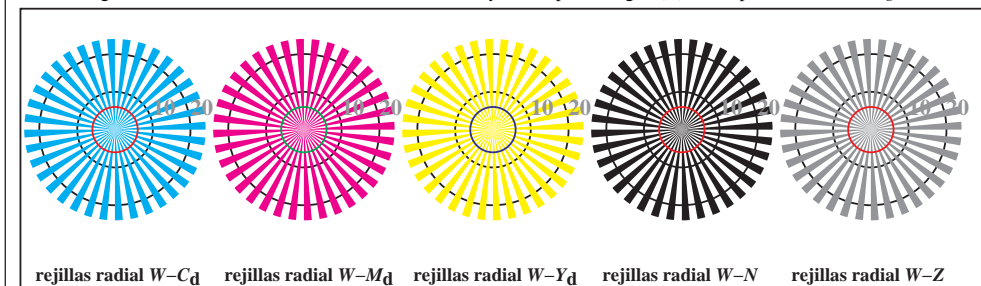


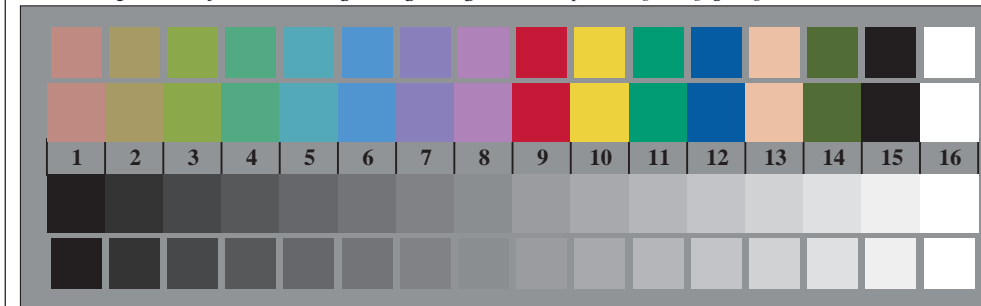


TS990-3, Fig. D1Wd: motivos florales, CIE 14 colores del test y 2 + 16 pasos de gris (sf); PS operator: 4 colorimage

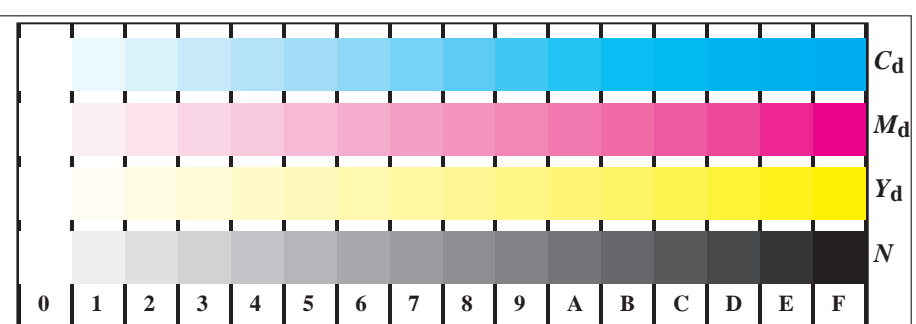


rejillas radial $W-C_d$ rejillas radial $W-M_d$ rejillas radial $W-Y_d$ rejillas radial $W-N$ rejillas radial $W-Z$

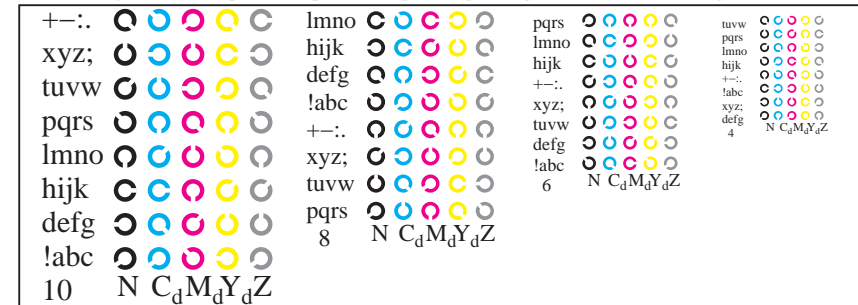
TS990-5, Fig. B2Wd: rejillas radial $W-C_d$; $W-M_d$; $W-Y_d$; $W-N$; PS operator: $rgb \rightarrow rgb_d$ setrgbcolor



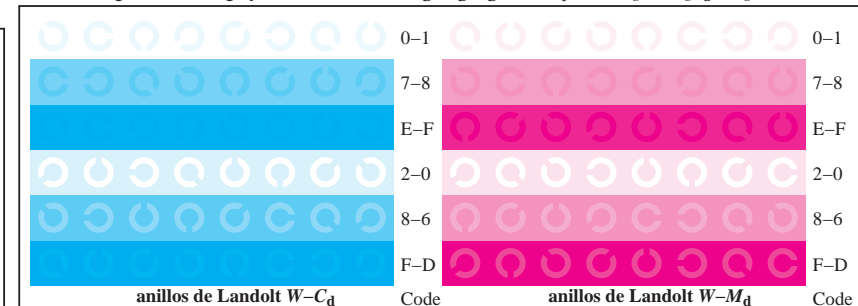
TS990-7, Fig. B3Wd: CIE 14 colores del test y 2 + 16 pasos de gris (sf); PS operator: $rgb/cmy0 \rightarrow rgb_d$ setrgbcolor



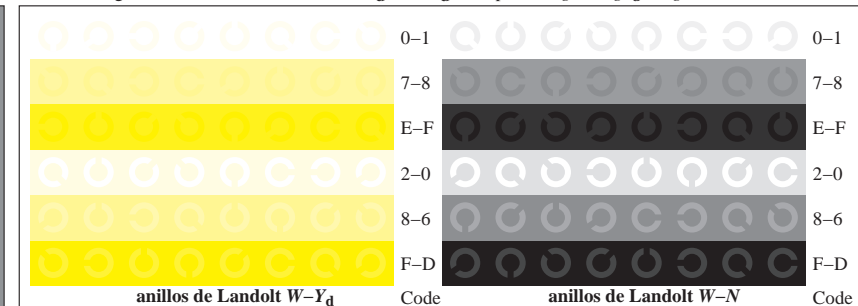
TS991-1, Fig. B4Wd: 16 equidistante pasos $W-C_d$; $W-M_d$; $W-Y_d$; $W-N$; $rgb/cmy0 \rightarrow rgb_d$ setrgbcolor



TS991-3, Fig. B5Wd: código y Landolt anillos N ; C_d ; M_d ; Y_d ; Z ; PS operator: $rgb \rightarrow rgb_d$ setrgbcolor



TS991-5, Fig. B6Wd: anillos de Landolt $W-C_d$; $W-M_d$; PS operator: $rgb \rightarrow rgb_d$ setrgbcolor



TS991-7, Fig. B7Wd: anillos de Landolt $W-Y_d$; $W-N$; PS operator: $rgb \rightarrow rgb_d$ setrgbcolor