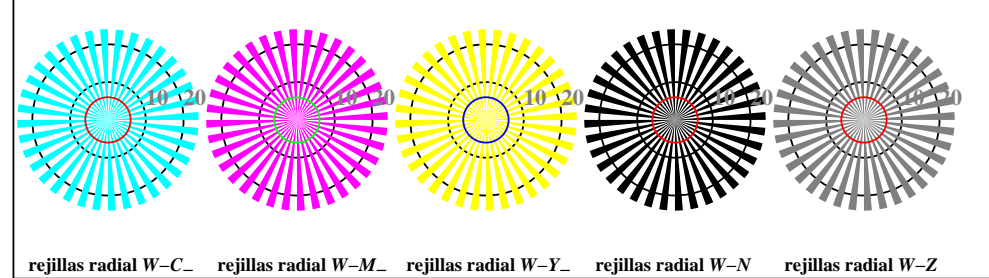


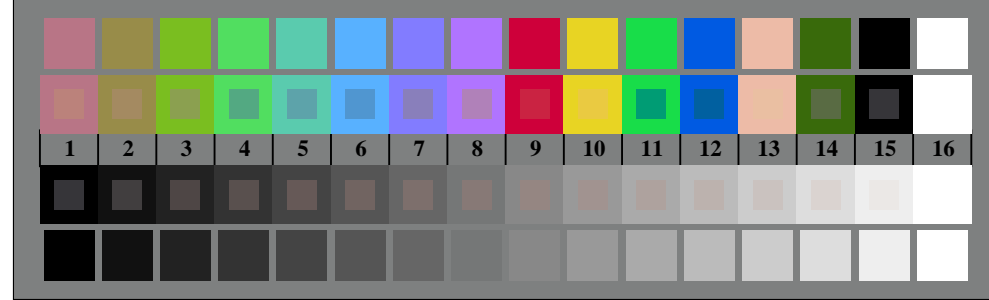
vea archivos semejantes: <http://130.149.60.45/~farbmetrik/TS96/TS96L0FP.PDF> / .PS
información técnica: <http://www.ps.bam.de> o <http://130.149.60.45/~farbmetrik>



TS960-3, Fig. B1W-: motivos florales, CIE 14 colores del test y 2 + 16 pasos de gris (nf); ; PS 4 colorimage



TS960-5, Fig. B2W-: rejillas radial W-C-; W-M-; W-Y-; W-N-; PS operator: rgb setrgbcolor



TS960-7, Fig. B3W-: CIE 14 colores del test y 2 + 16 pasos de gris (sf); PS operator:rgb/cmy0 set(rgb/cmyk)color

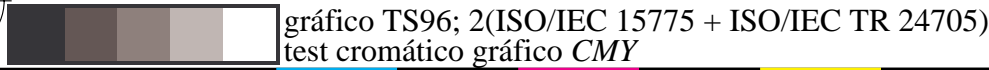
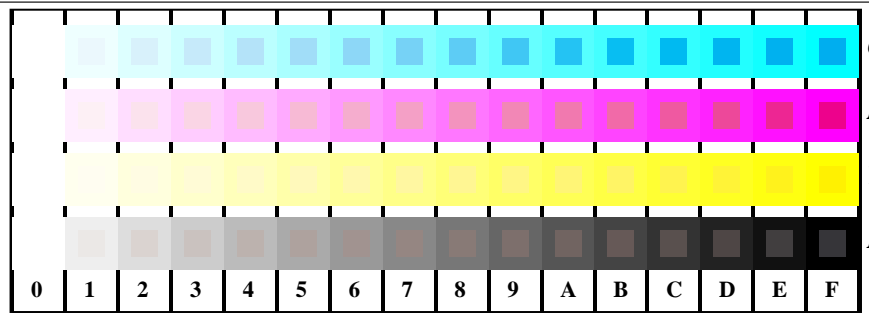
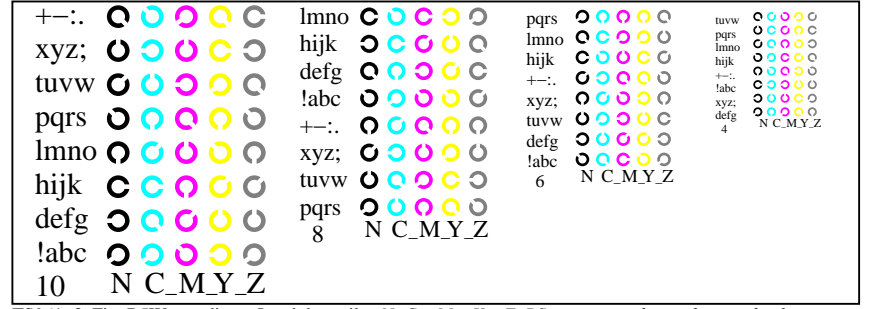


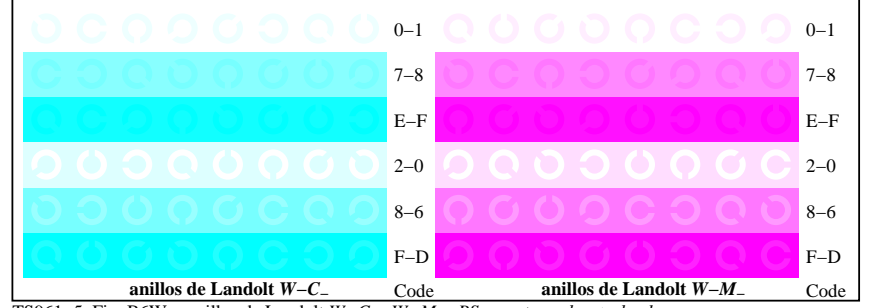
gráfico TS96; 2(ISO/IEC 15775 + ISO/IEC TR 24705)
test cromático gráfico CMY



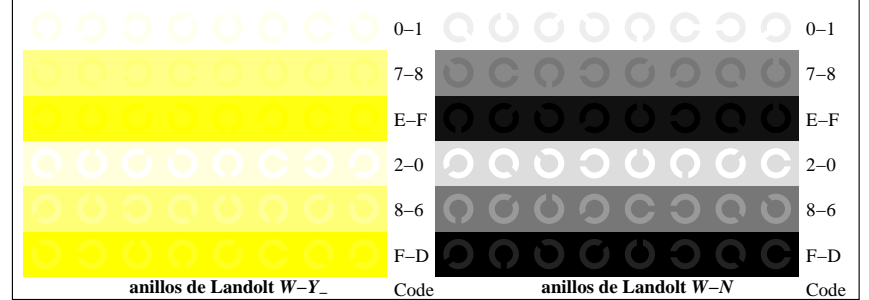
TS961-1, Fig. B4W-: 16 equidistante pasos W-C-; W-M-; W-Y-; W-N-; rgb/cmy0 set(rgb/cmyk)color



TS961-3, Fig. B5W-: codigo y Landolt anillos N; C-; M-; Y-; Z; PS operator: rgb->rgb_setrgbcolor



TS961-5, Fig. B6W-: anillos de Landolt W-C-; W-M-; PS operator:rgb setrgbcolor



TS961-7, Fig. B7W-: anillos de Landolt W-Y-; W-N-; PS operator:rgb setrgbcolor

entrada: rgb/cmyk -> w/rgb/cmyk-
salida: ningún cambio

TUB matrícula: 20150701-TS96/TS96L0FP.PDF /.PS
aplicación para la medida salida en la impresión offset

TUB material: code=rha4ta