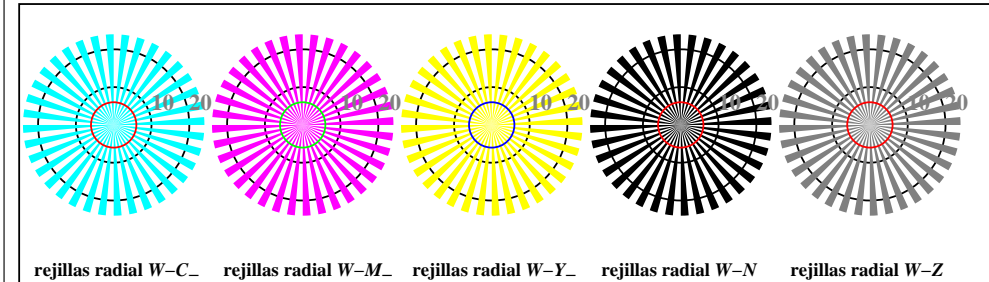
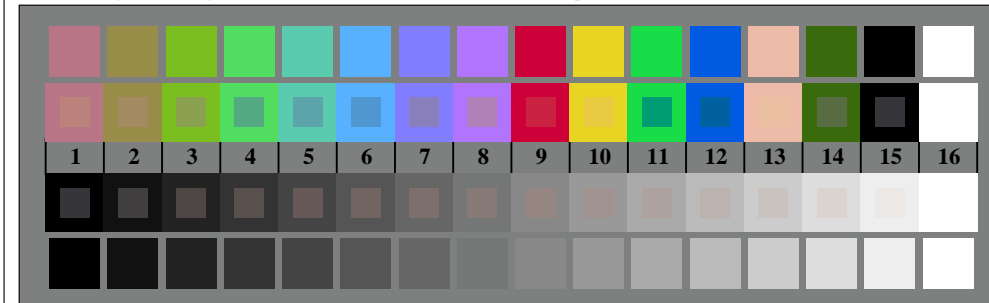




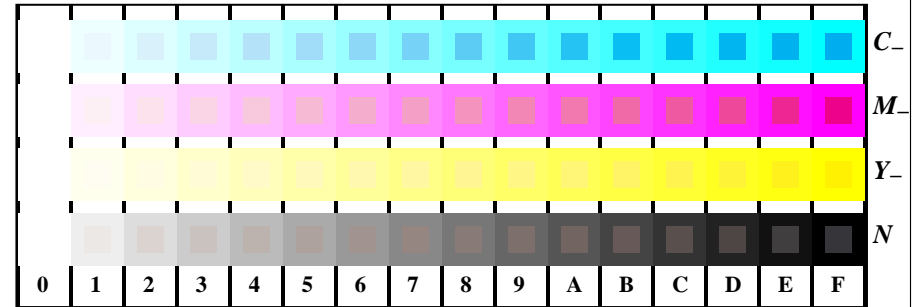
TS960-3, Fig. B1W-: motivos florales, CIE 14 colores del test y 2 + 16 pasos de gris (nf); ; PS 4 colorimage



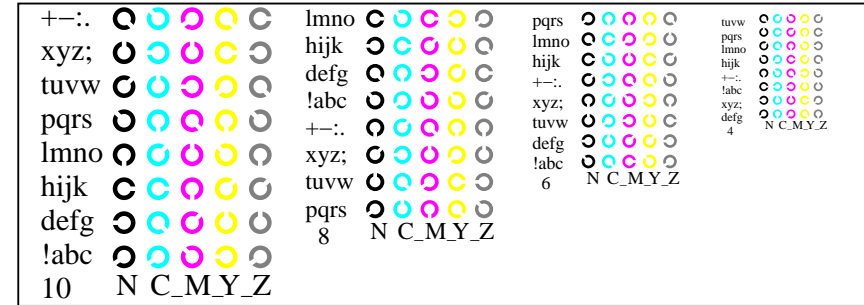
TS960-5, Fig. B2W-: rejillas radial W-C-; W-M-; W-Y-; W-N; PS operator: rgb setrgbcolor



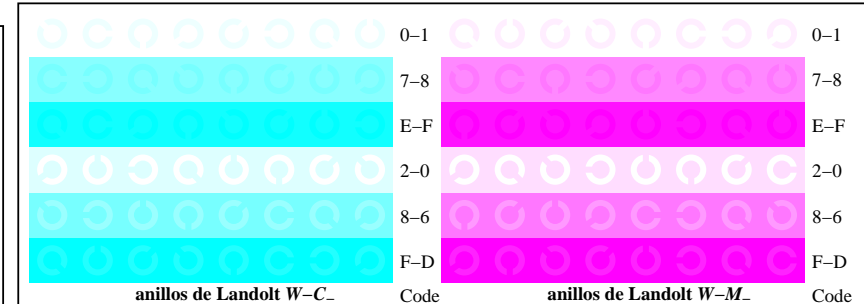
TS960-7, Fig. B3W-: CIE 14 colores del test y 2 + 16 pasos de gris (sf); PS operator:rgb/cmy0 set(rgb/cmyk)color



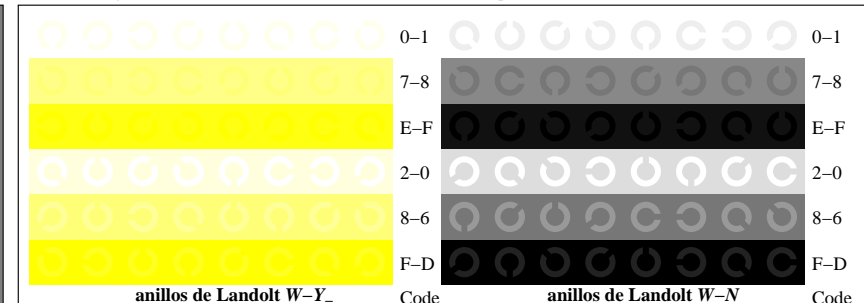
TS961-1, Fig. B4W-: 16 equidistante pasos W-C-; W-M-; W-Y-; W-N; rgb/cmy0 set(rgb/cmyk)color



TS961-3, Fig. B5W-: código y Landolt anillos N; C-; M-; Y-; Z; PS operator: rgb->rgb_ setrgbcolor



TS961-5, Fig. B6W-: anillos de Landolt W-C-; W-M-; PS operator:rgb setrgbcolor



TS961-7, Fig. B7W-: anillos de Landolt W-Y-; W-N; PS operator:rgb setrgbcolor