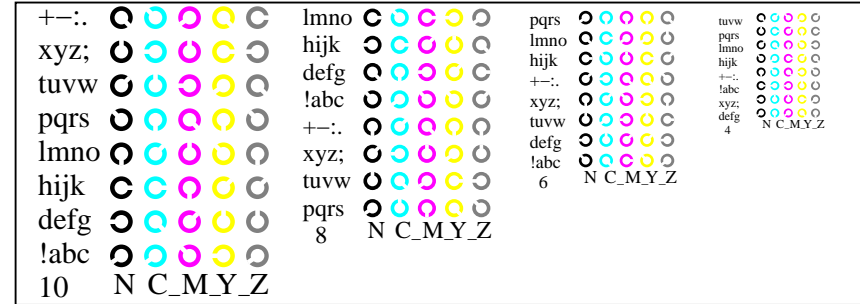
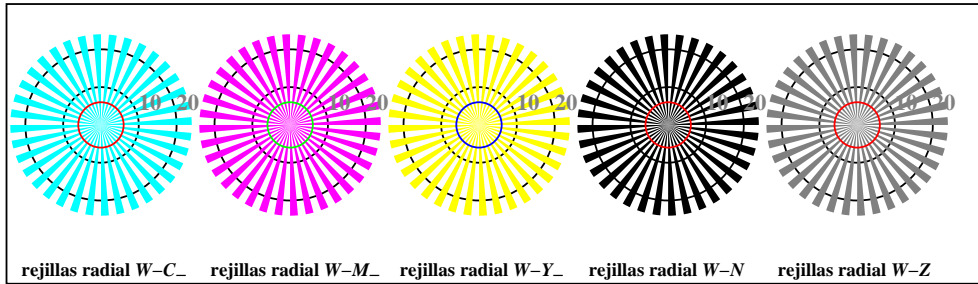


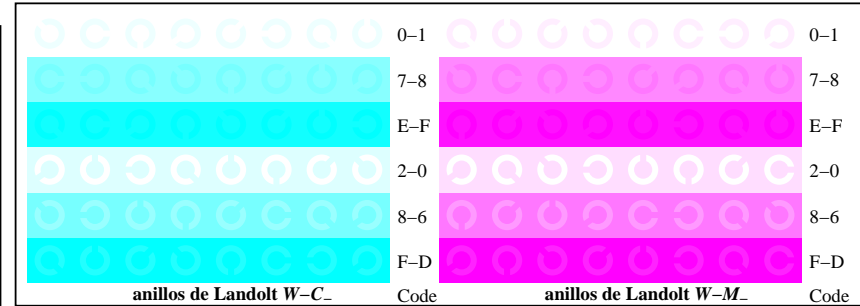
TS941-1, Fig. B4W-: 16 equidistante pasos W-C-; W-M-; W-Y-; W-N; *rgb/cmy0 set(rgb/cmyk)color*



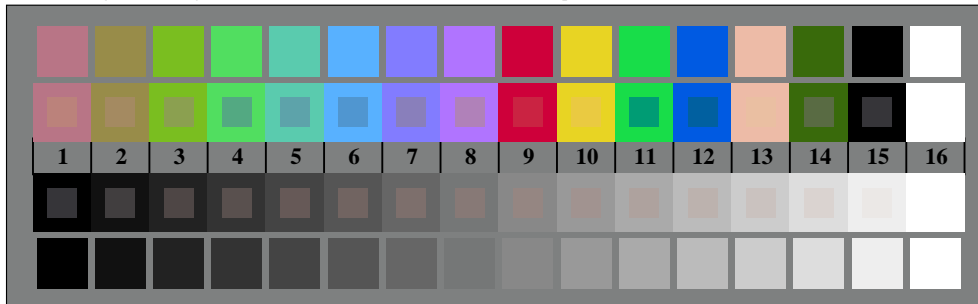
TS941-3, Fig. B5W-: código y Landolt anillos N; C-; M-; Y-; Z; *PS operator rgb->rgb_setrgbcolor*



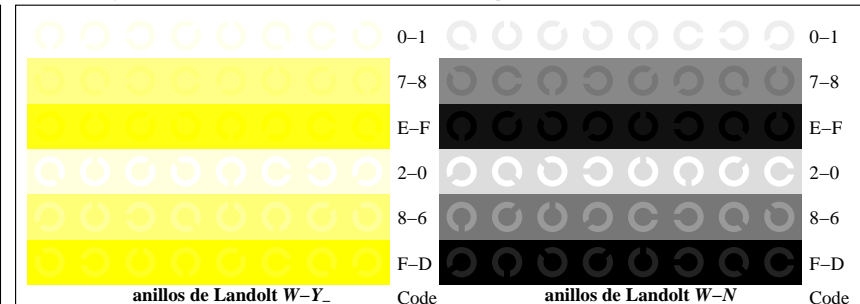
TS940-5, Fig. B2W-: rejillas radial W-C-; W-M-; W-Y-; W-N; *PS operator rgb->rgb_setrgbcolor*



TS941-5, Fig. B6W-: anillos de Landolt W-C-; W-M-; *PS operator rgb_setrgbcolor*



TS940-7, Fig. B3W-: CIE 14 colores del test y 2 + 16 pasos de gris (sf); *rgb/cmy0 set(rgb/cmyk)color*



TS941-7, Fig. B7W-: anillos de Landolt W-Y-; W-N; *PS operator rgb_setrgbcolor*