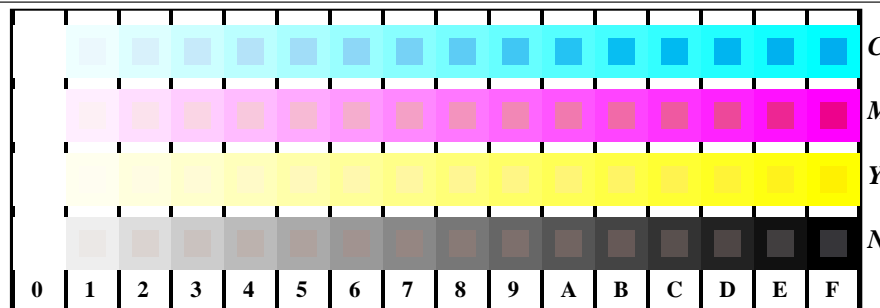


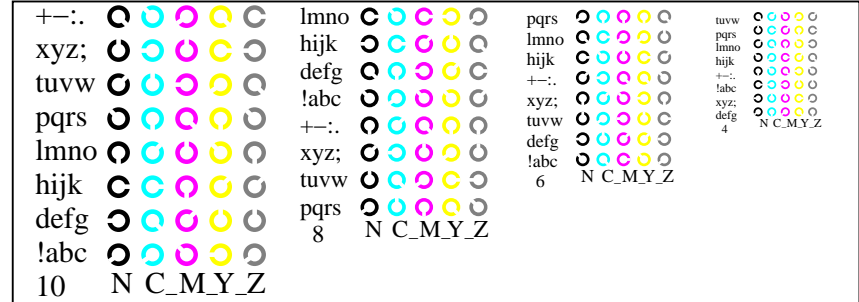
vea archivos semejantes: <http://130.149.60.45/~farbmetrik/TS91/TS91.HTM>
información técnica: <http://www.ps.bam.de> o <http://130.149.60.45/~farbmetrik>

TUB matrícula: 20150701-TS91/TS91L0FA.TXT /PS
aplicación para la medida de display output

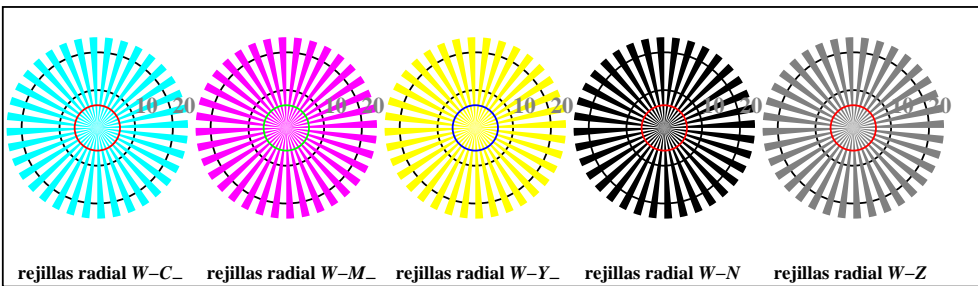
TUB material: code=rh4ta



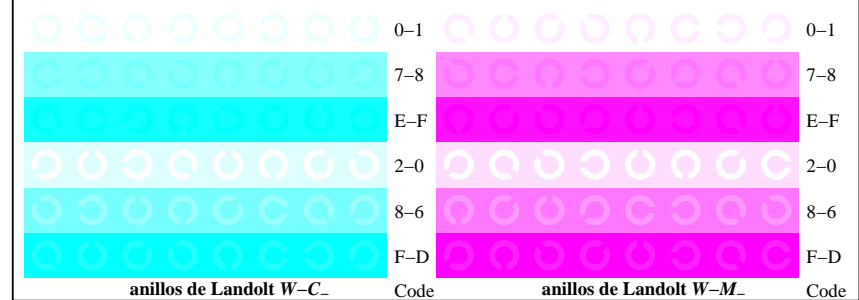
TS911-1, Fig. B4W-: 16 equidistante pasos W-C-; W-M-; W-Y-; W-N; rgb/cmy0 set(rgb/cmyk)color



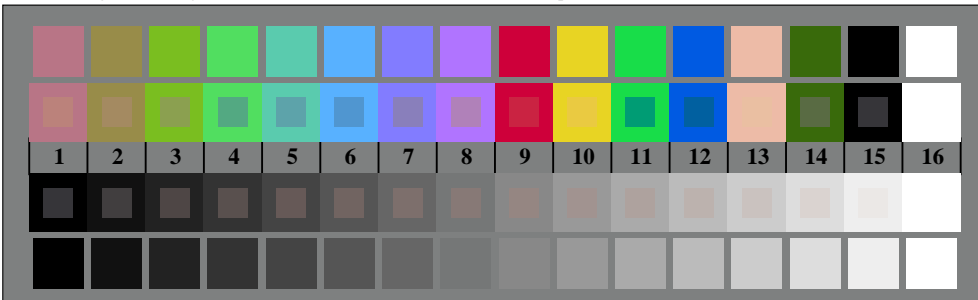
TS911-3, Fig. B5W-: codigo y Landolt anillos N; C-; M-; Y-; Z; PS operator rgb->rgb_setrgbcolor



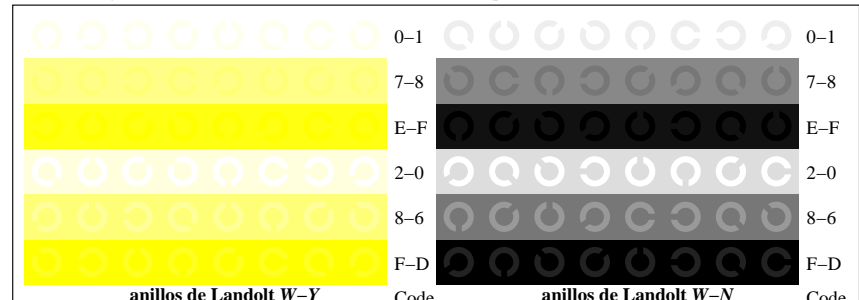
TS910-5, Fig. B2W-: rejillas radial W-C-; W-M-; W-Y-; W-N; PS operator rgb->rgb_setrgbcolor



TS911-5, Fig. B6W-: anillos de Landolt W-C-; W-M-; PS operator rgb_setrgbcolor



TS910-7, Fig. B3W-: CIE 14 colores del test y 2 + 16 pasos de gris (sf); rgb/cmy0 set(rgb/cmyk)color



TS911-7, Fig. B7W-: anillos de Landolt W-Y-; W-N; PS operator rgb_setrgbcolor



gráfico TS91; 2(ISO/IEC 15775 + ISO/IEC TR 24705)
test cromático gráfico CMYK

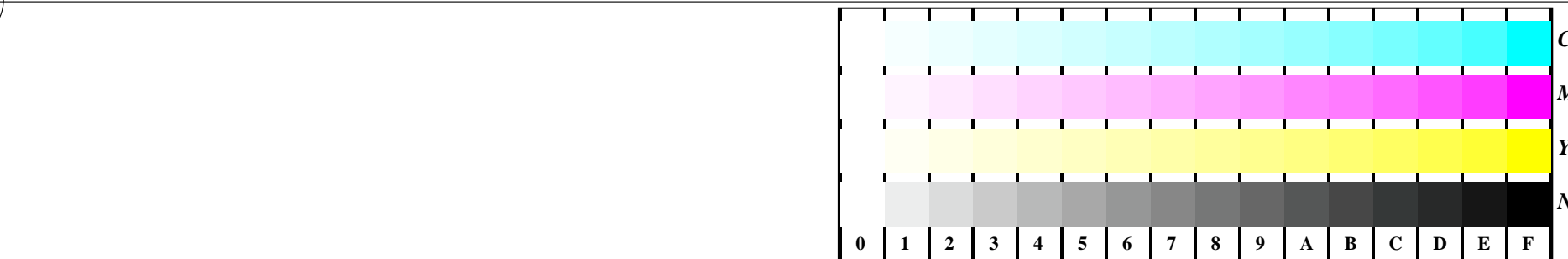
entrada: rgb/cmyk -> w/rgb/cmyk-
salida: ningún cambio



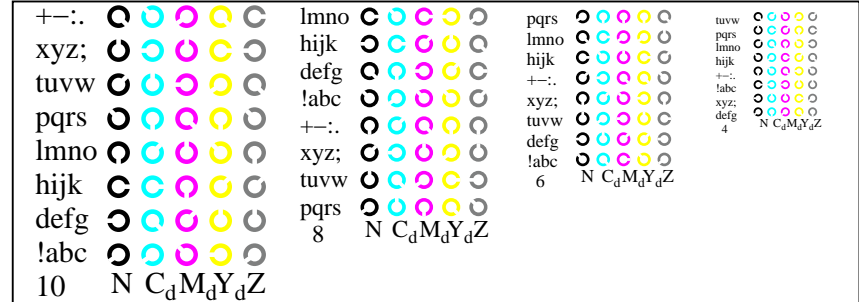
vea archivos semejantes: <http://130.149.60.45/~farbmetrik/TS91/TS91.HTM>
información técnica: <http://www.ps.bam.de> o <http://130.149.60.45/~farbmetrik>

TUB matrícula: 20150701-TS91/TS91L0FA.TXT /PS
aplicación para la medida de display output, ninguna separación

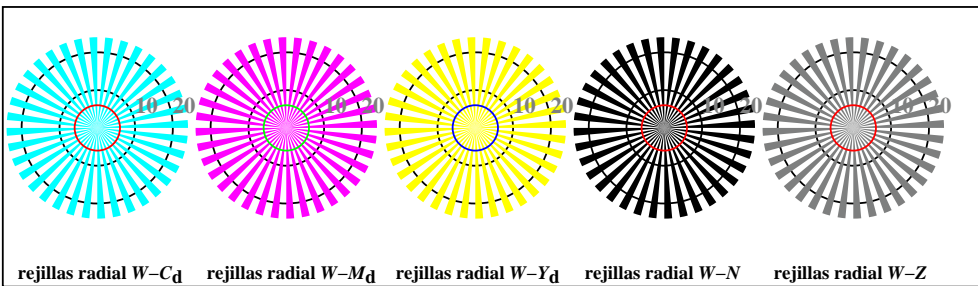
TUB material: code=rh4ta



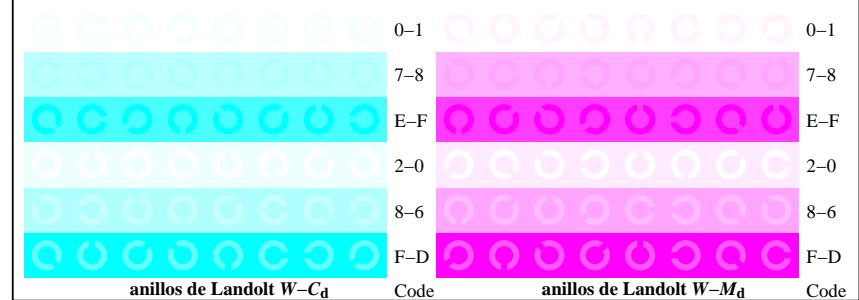
TS911-1, Fig. B4Wdd: 16 equidistante pasos W-C_d; W-M_d; W-Y_d; W-N; rgb/cmy0->rgb_{dd} setrgbcolor



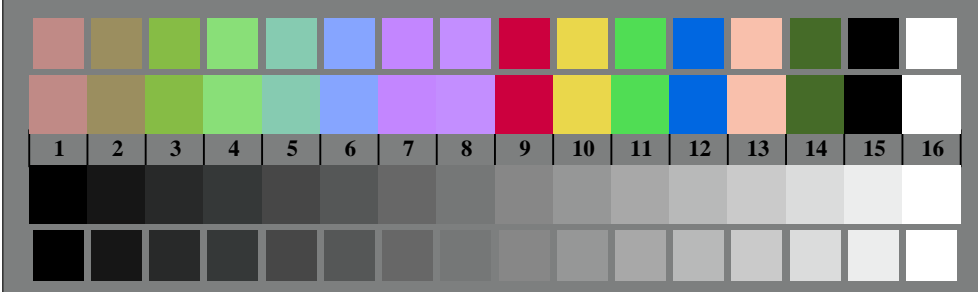
TS911-3, Fig. B5Wdd: codigo y Landolt anillosN; C_d; M_d; Y_d; Z; PS operator rgb->rgb_{dd} setrgbcolor



TS910-5, Fig. B2Wdd: rejillas radial W-C_d; W-M_d; W-Y_d; W-N; PS operator rgb->rgb_{dd} setrgbcolor



TS911-5, Fig. B6Wdd: anillos de Landolt W-C_d; W-M_d; PS operator rgb->rgb_{dd} setrgbcolor



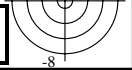
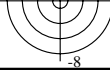
TS910-7, Fig. B3Wdd: CIE 14 colores del test y 2 + 16 pasos de gris (sf); rgb/cmy0->rgb_{dd} setrgbcolor



TS911-7, Fig. B7Wdd: anillos de Landolt W-Y_d; W-N; PS operator rgb->rgb_{dd} setrgbcolor

gráfico TS91; 2(ISO/IEC 15775 + ISO/IEC TR 24705)
test cromático gráfico CMYK, 3D=1, de=0, sRGB*

entrada: rgb/cmyk -> rgb_{dd}
salida: 3D-linealización a rgb*_{dd}



<http://130.149.60.45/~farbmetrik/TS91/TS91LOFA.TXT> /PS; 3D-linealización

F: 3D-linealización TS91/TS91LS30FA.DAT en archivo (F), página 4/18

<i>n/j</i>	HIC* Fda	<i>rgb</i> *Fda	<i>icf</i> *Fda	<i>hsi</i> *Fda	<i>rgb*</i> Fda	<i>LabCh*</i> Fda	<i>rgb*</i> Fda	<i>LabCh*</i> Fda	<i>DE*</i> Fda hsiMdd	<i>rgb*</i> Mdd	<i>LabCh*</i> Mdd
0/648	R00Y_100_100ad	1.0	0.0	0.0	1.0	1.0	0.5	390	1.0	0.0	0.0
1/666	R25Y_100_100ad	1.0	0.25	0.0	1.0	1.0	0.5	44	1.0	0.233	0.0
2/684	R50Y_100_100ad	1.0	0.5	0.0	1.0	1.0	0.5	60	1.0	0.5	0.0
3/702	R75Y_100_100ad	1.0	0.75	0.0	1.0	1.0	0.5	76	1.0	0.766	0.0
4/720	Y00G_100_100ad	1.0	1.0	0.0	1.0	1.0	0.5	90	1.0	1.0	0.0
5/558	Y25G_100_100ad	0.75	1.0	0.0	1.0	1.0	0.5	104	0.766	1.0	0.0
6/396	Y50G_100_100ad	0.5	1.0	0.0	1.0	1.0	0.5	120	0.5	1.0	0.0
7/234	Y75G_100_100ad	0.25	1.0	0.0	1.0	1.0	0.5	136	0.233	1.0	0.0
8/72	G00B_100_100ad	0.0	1.0	0.0	1.0	1.0	0.5	150	0.0	1.0	0.0
9/72	G00B_100_100ad	0.0	1.0	0.0	1.0	1.0	0.5	150	0.0	1.0	0.0
10/76	G25B_100_100ad	0.0	1.0	0.0	1.0	1.0	0.5	180	0.0	1.0	0.5
11/80	G50B_100_100ad	0.0	1.0	1.0	1.0	1.0	0.5	210	0.0	1.0	1.0
12/44	G75B_100_100ad	0.0	0.5	1.0	1.0	1.0	0.5	240	0.0	0.5	1.0
13/8	B00M_100_100ad	0.0	0.0	1.0	1.0	1.0	0.5	270	0.0	0.0	1.0
14/332	B25R_100_100ad	0.5	0.0	1.0	1.0	1.0	0.5	300	0.5	0.0	1.0
15/656	B50R_100_100ad	1.0	0.0	1.0	1.0	1.0	0.5	330	1.0	0.0	1.0
16/652	B75R_100_100ad	1.0	0.0	0.5	1.0	1.0	0.5	360	1.0	0.0	0.5
17/648	R00Y_100_100ad	1.0	0.0	0.0	1.0	1.0	0.5	390	1.0	0.0	0.0
18/688	R00Y_100_050ad	1.0	0.5	0.5	1.0	0.5	0.75	390	1.0	0.5	0.5
19/706	R50Y_100_050ad	1.0	0.75	0.5	1.0	0.5	0.75	60	1.0	0.75	0.5
20/724	Y00G_100_050ad	1.0	1.0	0.5	1.0	0.5	0.75	90	1.0	1.0	0.5
21/562	Y50G_100_050ad	0.75	1.0	0.5	1.0	0.5	0.75	120	0.75	1.0	0.5
22/400	G00B_100_050ad	0.5	1.0	0.5	1.0	0.5	0.75	150	0.5	1.0	0.5
23/404	G50B_100_050ad	0.5	1.0	1.0	1.0	0.5	0.75	210	0.5	1.0	1.0
24/368	B00R_100_050ad	0.5	0.5	1.0	1.0	0.5	0.75	270	0.5	0.5	1.0
25/692	B50R_100_050ad	1.0	0.5	1.0	1.0	0.5	0.75	330	1.0	0.5	1.0
26/688	R00Y_100_050ad	1.0	0.5	0.5	1.0	0.5	0.75	390	1.0	0.5	0.5
27/506	R00Y_075_050ad	0.75	0.25	0.25	0.75	0.5	0.5	390	0.75	0.25	0.25
28/524	R50Y_075_050ad	0.75	0.5	0.25	0.75	0.5	0.5	60	0.75	0.5	0.25
29/542	Y00G_075_050ad	0.75	0.75	0.25	0.75	0.5	0.5	90	0.75	0.75	0.25
30/380	Y50G_075_050ad	0.5	0.75	0.25	0.75	0.5	0.5	120	0.5	0.75	0.25
31/218	G00B_075_050ad	0.25	0.75	0.25	0.75	0.5	0.5	150	0.25	0.75	0.25
32/222	G50B_075_050ad	0.25	0.75	0.75	0.75	0.5	0.5	210	0.25	0.75	0.75
33/186	B00R_075_050ad	0.25	0.25	0.75	0.75	0.5	0.5	270	0.25	0.25	0.75
34/510	B50R_075_050ad	0.75	0.25	0.75	0.75	0.5	0.5	330	0.75	0.25	0.75
35/506	R00Y_075_050ad	0.75	0.25	0.25	0.75	0.5	0.5	390	0.75	0.25	0.25
36/324	R00Y_050_050ad	0.5	0.0	0.0	0.5	0.5	0.25	390	0.5	0.0	0.0
37/342	R50Y_050_050ad	0.5	0.25	0.0	0.5	0.5	0.25	60	0.5	0.25	0.0
38/360	Y00G_050_050ad	0.5	0.5	0.0	0.5	0.5	0.25	90	0.5	0.5	0.0
39/198	Y50G_050_050ad	0.25	0.5	0.0	0.5	0.5	0.25	120	0.25	0.5	0.0
40/36	G00B_050_050ad	0.0	0.5	0.0	0.5	0.5	0.25	150	0.0	0.5	0.0
41/40	G50B_050_050ad	0.0	0.5	0.5	0.5	0.5	0.25	210	0.0	0.5	0.5
42/4	B00R_050_050ad	0.0	0.0	0.5	0.5	0.5	0.25	270	0.0	0.0	0.5
43/328	B50R_050_050ad	0.5	0.0	0.5	0.5	0.5	0.25	330	0.5	0.0	0.5
44/324	R00Y_050_050ad	0.5	0.0	0.0	0.5	0.5	0.25	390	0.5	0.0	0.0
45/0	NW_000ad	0.0	0.0	0.0	0.0	0.0	0.0	360	0.0	0.0	0.0
46/91	NW_013ad	0.125	0.125	0.125	0.125	0.0	0.125	360	0.125	0.125	0.125
47/182	NW_025ad	0.25	0.25	0.25	0.25	0.0	0.25	360	0.25	0.25	0.25
48/273	NW_038ad	0.375	0.375	0.375	0.375	0.0	0.375	360	0.375	0.375	0.375
49/364	NW_050ad	0.5	0.5	0.5	0.5	0.0	0.5	360	0.5	0.5	0.5
50/455	NW_063ad	0.625	0.625	0.625	0.625	0.0	0.625	360	0.625	0.625	0.625
51/546	NW_075ad	0.75	0.75	0.75	0.75	0.0	0.75	360	0.75	0.75	0.75
52/637	NW_088ad	0.875	0.875	0.875	0.875	0.0	0.875	360	0.875	0.875	0.875
53/728	NW_100ad	1.0	1.0	1.0	1.0	0.0	1.0	360	1.0	1.0	1.0
54/728	NW_100ad	1.0	1.0	1.0	1.0	0.0	1.0	360	1.0	1.0	1.0

TUB matrícula: 20150701-TS91/TS91LOFA.TXT /PS
aplicación para la medida de display output, ninguna separación

TUB material: code=rh4ta

delta E* = 0.8

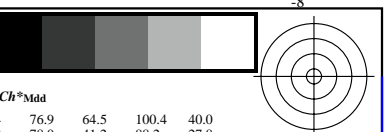
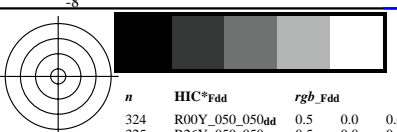
gráfico TS91; 2(ISO/IEC 15775 + ISO/IEC TR 24705)

colores y diferencia en color, ΔE*, 3D=1, de=0, sRGB*

entrada: rgb/cmyk -> rgb_{dd}

salida: 3D-linealización a rgb*_{dd}

http://130.149.60.45/~farbmetrik/TS91/TS91LOFA.TXT /.PS; 3D-linealización
F: 3D-linealización TS91/TS91LS30FA.DAT en archivo (F), página 9/18



vea archivos semejantes: <http://130.149.60.45/~farbmetrik/TS91/TS91.LOFA.TXT>
información técnica: <http://www.ps.bam.de> o <http://130.149.60.45/~farbmetrik>

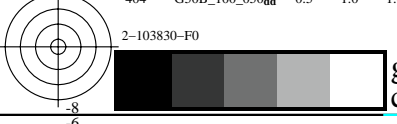


Table with columns: n, HIC*Fada, rgb_Fada, icf_Fada, hsi_Fada, rgb*Fada, LabCh*Fada, rgb*Mada, LabCh*Mada, DE*Fada hsiMada, rgb*Mada, LabCh*Mada. It contains a large grid of numerical data representing color measurements and differences.

TUB matrícula: 20150701-TS91/TS91LOFA.TXT /.PS
aplicación para la medida de display output, ninguna separación
TUB material: code=rh4ta

2-103830-F0
gráfico TS91; 2(ISO/IEC 15775 + ISO/IEC TR 24705)
colores y diferencia en color, ΔE^* , 3D=1, de=0, sRGB*

entrada: $rgb/cmyk \rightarrow rgb_{dd}$
salida: 3D-linealización a rgb^*_{dd}

2-103830-F0

Table with columns: n, HIC*Fda, rgb_Fda, icf_Fda, hsi_Fda, rgb*Fda, LabCh*Fda, rgb*Mad, LabCh*Mad, DE*Fda hsiMad, rgb*Mad, LabCh*Mad. Rows 810-890. Includes a delta E* = 0.7 value at the bottom right of the table area.

vea archivos semejantes: http://130.149.60.45/~farbmetrik/TS91/TS91.LOFA.TXT /PS
información técnica: http://www.ps.bam.de o http://130.149.60.45/~farbmetrik

TUB matrícula: 20150701-TS91/TS91LOFA.TXT /PS
aplicación para la medida de display output, ninguna separación
TUB material: code=rh4ta

2-1031430-F0

TS910-7N, 15/18-F

gráfico TS91; 2(ISO/IEC 15775 + ISO/IEC TR 24705)
colores y diferencia en color, ΔE*, 3D=1, de=0, sRGB*

entrada: rgb/cmyk -> rgb_{ad}
salida: 3D-linealización a rgb*_{dd}

2-1031430-F0

delta E* = 0.7

vea archivos semejantes: <http://130.149.60.45/~farbmetrik/TS91/TS91.HTM>
 información técnica: <http://www.ps.bam.de> o <http://130.149.60.45/~farbmetrik>

TUB matrícula: 20150701-TS91/TS91L0FA.TXT /.PS
 aplicación para la medida de display output, ninguna separación
 TUB material: code=rh4ta

n	HIC*Fdd	rgb_Fdd	icf_Fdd	hsi_Fdd	rgb*Fdd	LabCh*Fdd	rgb**Fdd	LabCh**Fdd	DE**Fdd hsiMdd	rgb*Mdd	LabCh*Mdd
1053	NW_086da	0.866 0.866 0.866	0.866 0.0 0.866	360	0.866 0.866 0.866	82.6 0.0 0.0	0.847 0.85 0.85	82.5 -0.1 0.0 0.1	209.2 0.2 360	1.0 1.0 1.0	95.4 0.0 0.0
1054	NW_093da	0.933 0.933 0.933	0.933 0.0 0.933	360	0.933 0.933 0.933	89.0 0.0 0.0	0.921 0.924 0.924	88.9 -0.2 -0.1 0.2	207.0 0.2 360	1.0 1.0 1.0	95.4 0.0 0.0
1055	NW_100da	1.0 1.0 1.0	1.0 0.0 1.0	360	1.0 1.0 1.0	95.4 0.0 0.0	1.0 1.0 1.0	95.4 0.0 0.0 0.0	325.2 0.0 360	1.0 1.0 1.0	95.4 0.0 0.0
1056	NW_000da	0.0 0.0 0.0	0.0 0.0 0.0	360	0.0 0.0 0.0	0.0 0.0 0.0	0.0 0.0 0.0	0.0 0.0 0.0 0.0	0.0 0.0 360	1.0 1.0 1.0	95.4 0.0 0.0
1057	NW_006da	0.066 0.066 0.066	0.066 0.0 0.066	360	0.066 0.066 0.066	6.2 0.0 0.0	0.068 0.07 0.07	4.7 -0.1 0.0 0.1	215.3 1.5 360	1.0 1.0 1.0	95.4 0.0 0.0
1058	NW_013da	0.133 0.133 0.133	0.133 0.0 0.133	360	0.133 0.133 0.133	12.6 0.0 0.0	0.134 0.138 0.138	12.6 -0.5 -0.1 0.5	198.8 0.5 360	1.0 1.0 1.0	95.4 0.0 0.0
1059	NW_020da	0.2 0.2 0.2	0.2 0.0 0.2	360	0.2 0.2 0.2	19.0 0.0 0.0	0.181 0.193 0.193	18.7 -1.1 -0.4 1.2	202.3 1.3 360	1.0 1.0 1.0	95.4 0.0 0.0
1060	NW_026da	0.266 0.266 0.266	0.266 0.0 0.266	360	0.266 0.266 0.266	25.3 0.0 0.0	0.25 0.251 0.251	25.4 0.0 0.0 0.0	198.2 0.1 360	1.0 1.0 1.0	95.4 0.0 0.0
1061	NW_033da	0.333 0.333 0.333	0.333 0.0 0.333	360	0.333 0.333 0.333	31.7 0.0 0.0	0.303 0.311 0.311	31.6 -0.7 -0.3 0.8	203.1 0.8 360	1.0 1.0 1.0	95.4 0.0 0.0
1062	NW_040da	0.4 0.4 0.4	0.4 0.0 0.4	360	0.4 0.4 0.4	38.1 0.0 0.0	0.374 0.374 0.374	38.2 0.0 0.0 0.0	217.7 0.1 360	1.0 1.0 1.0	95.4 0.0 0.0
1063	NW_046da	0.466 0.466 0.466	0.466 0.0 0.466	360	0.466 0.466 0.466	44.4 0.0 0.0	0.431 0.437 0.437	44.4 -0.5 -0.2 0.5	203.8 0.5 360	1.0 1.0 1.0	95.4 0.0 0.0
1064	NW_053da	0.533 0.533 0.533	0.533 0.0 0.533	360	0.533 0.533 0.533	50.8 0.0 0.0	0.503 0.504 0.504	51.0 0.0 0.0 0.0	222.6 0.1 360	1.0 1.0 1.0	95.4 0.0 0.0
1065	NW_060da	0.6 0.6 0.6	0.6 0.0 0.6	360	0.6 0.6 0.6	57.2 0.0 0.0	0.564 0.569 0.569	57.1 -0.3 -0.1 0.4	204.7 0.4 360	1.0 1.0 1.0	95.4 0.0 0.0
1066	NW_066da	0.666 0.666 0.666	0.666 0.0 0.666	360	0.666 0.666 0.666	63.5 0.0 0.0	0.634 0.635 0.635	63.3 -0.1 0.0 0.1	207.4 0.2 360	1.0 1.0 1.0	95.4 0.0 0.0
1067	NW_073da	0.734 0.734 0.734	0.734 0.0 0.734	360	0.734 0.734 0.734	70.0 0.0 0.0	0.703 0.706 0.707	69.8 -0.3 -0.1 0.3	205.7 0.4 360	1.0 1.0 1.0	95.4 0.0 0.0
1068	NW_080da	0.8 0.8 0.8	0.8 0.0 0.8	360	0.8 0.8 0.8	76.3 0.0 0.0	0.775 0.778 0.778	76.1 -0.1 0.0 0.2	206.4 0.2 360	1.0 1.0 1.0	95.4 0.0 0.0
1069	NW_086da	0.866 0.866 0.866	0.866 0.0 0.866	360	0.866 0.866 0.866	82.6 0.0 0.0	0.847 0.85 0.85	82.5 -0.1 0.0 0.1	209.2 0.2 360	1.0 1.0 1.0	95.4 0.0 0.0
1070	NW_093da	0.933 0.933 0.933	0.933 0.0 0.933	360	0.933 0.933 0.933	89.0 0.0 0.0	0.921 0.924 0.924	88.9 -0.2 -0.1 0.2	207.0 0.2 360	1.0 1.0 1.0	95.4 0.0 0.0
1071	NW_100da	1.0 1.0 1.0	1.0 0.0 1.0	360	1.0 1.0 1.0	95.4 0.0 0.0	1.0 1.0 1.0	95.4 0.0 0.0 0.0	325.2 0.0 360	1.0 1.0 1.0	95.4 0.0 0.0
1072	NW_000da	0.0 0.0 0.0	0.0 0.0 0.0	360	0.0 0.0 0.0	0.0 0.0 0.0	0.0 0.0 0.0	0.0 0.0 0.0 0.0	0.0 0.0 360	1.0 1.0 1.0	95.4 0.0 0.0
1073	NW_100da	1.0 1.0 1.0	1.0 0.0 1.0	360	1.0 1.0 1.0	95.4 0.0 0.0	1.0 1.0 1.0	95.4 0.0 0.0 0.0	325.2 0.0 360	1.0 1.0 1.0	95.4 0.0 0.0
1074	RO0Y_100_100da	1.0 0.0 0.0	1.0 1.0 0.5	390	1.0 0.0 0.0	50.4 76.9 64.5 100.4 40.0	1.0 0.0 0.0	50.4 76.9 64.5 100.4	39.9 0.0 389	1.0 0.0 0.0	50.4 76.9 64.5 100.4 40.0
1075	G50B_100_100da	0.0 1.0 1.0	1.0 1.0 0.5	210	0.0 1.0 1.0	86.8 -46.1 -13.5 48.1 196.3	0.0 1.0 1.0	86.8 -46.1 -13.5 48.1	196.3 0.0 210	0.0 1.0 1.0	86.8 -46.1 -13.5 48.1 196.3
1076	Y00G_100_100da	1.0 1.0 0.0	1.0 1.0 0.5	90	1.0 1.0 0.0	92.6 -20.7 90.7 93.0 102.8	1.0 1.0 0.0	92.6 -20.6 90.7 93.0	102.8 0.0 89	1.0 1.0 0.0	92.6 -20.7 90.7 93.0 102.8
1077	B00R_100_100da	0.0 0.0 1.0	1.0 1.0 0.5	270	0.0 0.0 1.0	30.3 76.0 -103.5 128.5 306.2	0.0 0.0 1.0	30.3 76.0 -103.5 128.5	306.2 0.0 270	0.0 0.0 1.0	30.3 76.0 -103.5 128.5 306.2
1078	G00B_100_100da	0.0 1.0 0.0	1.0 1.0 0.5	150	0.0 1.0 0.0	83.6 -82.7 79.8 115.0 136.0	0.0 0.999 0.0	83.6 -82.7 79.8 115.0	136.0 0.0 149	0.0 1.0 0.0	83.6 -82.7 79.8 115.0 136.0
1079	B50R_100_100da	1.0 0.0 1.0	1.0 1.0 0.5	330	1.0 0.0 1.0	57.2 94.3 -58.4 110.9 328.2	1.0 0.0 1.0	57.2 94.3 -58.4 111.0	328.2 0.0 330	1.0 0.0 1.0	57.2 94.3 -58.4 110.9 328.2

delta E** = 0.2

