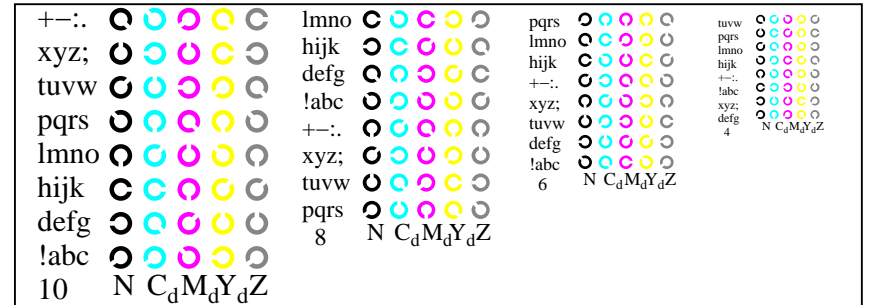
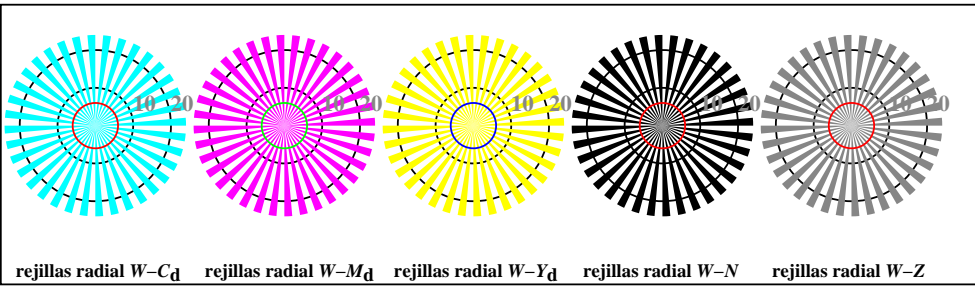


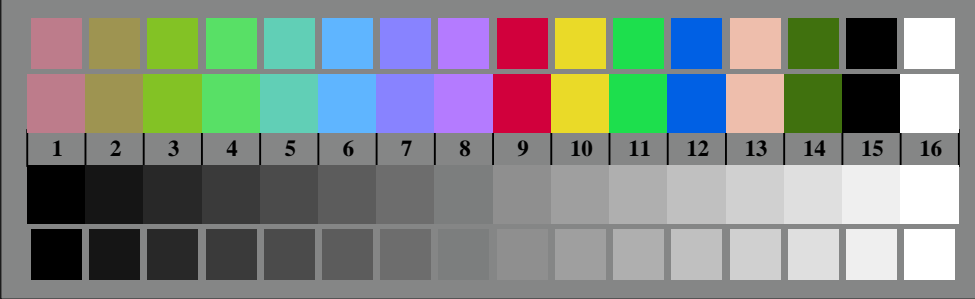
TS911-1, Fig. B4Wd: 16 equidistante pasos $W-C_d$; $W-M_d$; $W-Y_d$; $W-N$; $rgb/cmy0 \rightarrow rgb_d$ setrgbcolor



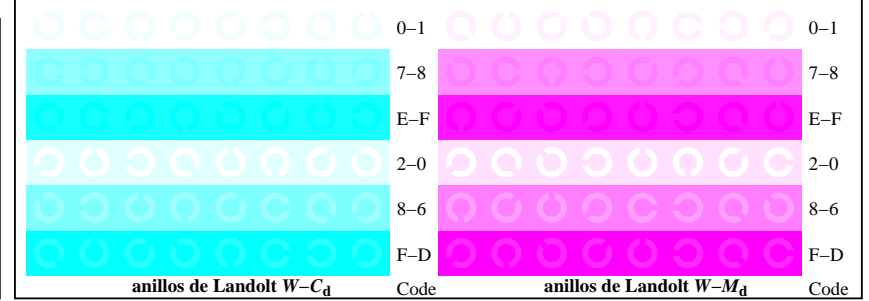
TS911-3, Fig. B5Wd: código y Landolt anillos N ; C_d ; M_d ; Y_d ; Z ; PS operator $rgb \rightarrow rgb_d$ setrgbcolor



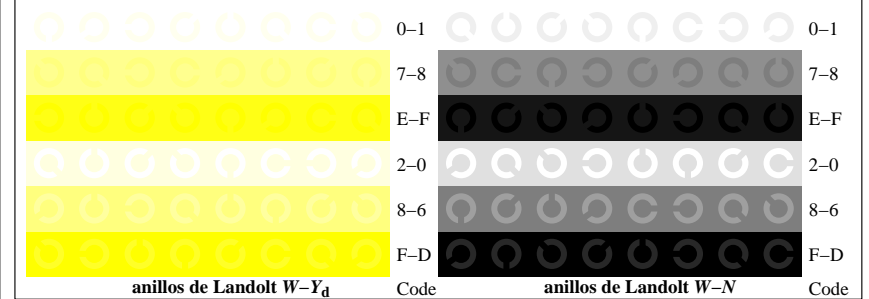
TS910-5, Fig. B2Wd: rejillas radial $W-C_d$; $W-M_d$; $W-Y_d$; $W-N$; PS operator $rgb \rightarrow rgb_d$ setrgbcolor



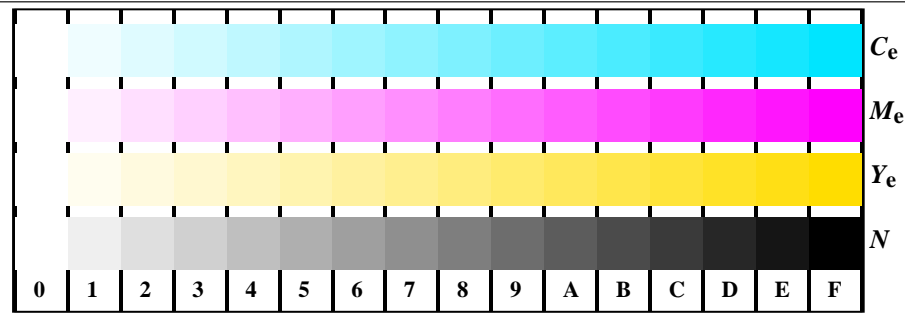
TS910-7, Fig. B3Wd: CIE 14 colores del test y 2 + 16 pasos de gris (sf); $rgb/cmy0 \rightarrow rgb_d$ setrgbcolor



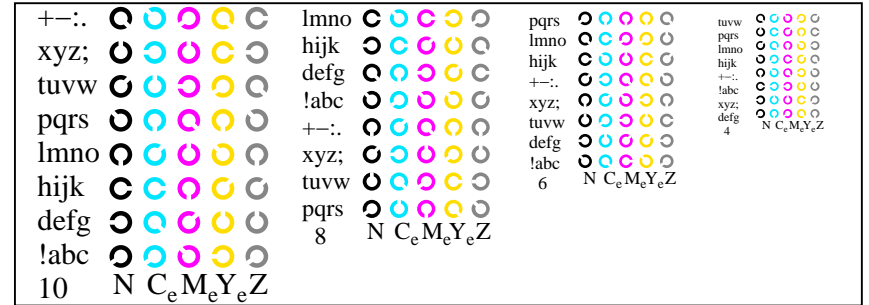
TS911-5, Fig. B6Wd: anillos de Landolt $W-C_d$; $W-M_d$; PS operator $rgb \rightarrow rgb_d$ setrgbcolor



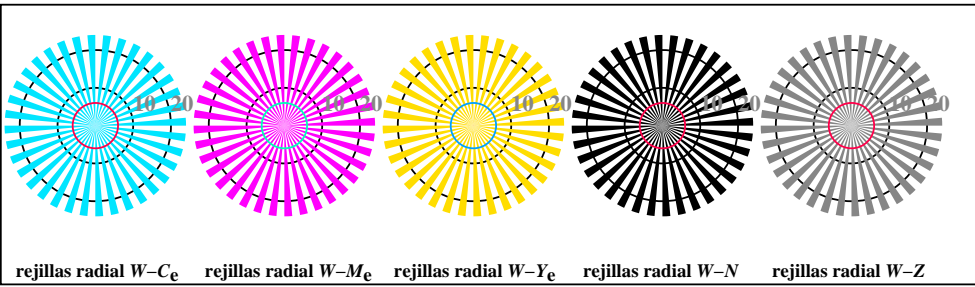
TS911-7, Fig. B7Wd: anillos de Landolt $W-Y_d$; $W-N$; PS operator $rgb \rightarrow rgb_d$ setrgbcolor



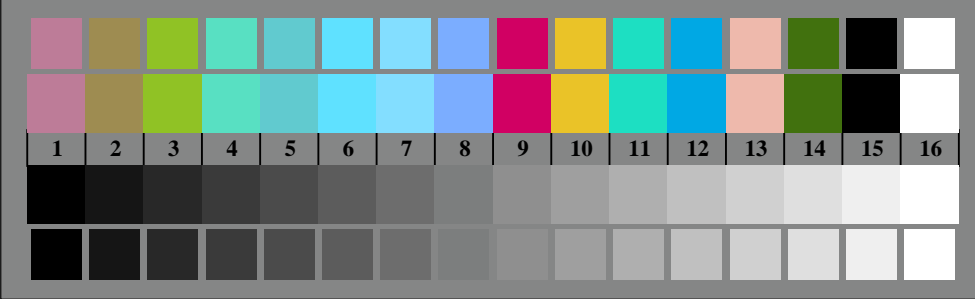
TS911-1, Fig. B4We: 16 equidistante pasos $W-C_e$; $W-M_e$; $W-Y_e$; $W-N$; $rgb/cmy0 \rightarrow rgb_e$ setrgbcolor



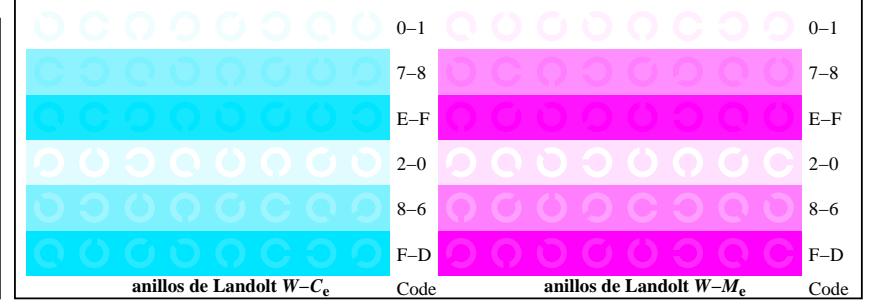
TS911-3, Fig. B5We: código y Landolt anillos N ; C_e ; M_e ; Y_e ; Z ; PS operator $rgb \rightarrow rgb_e$ setrgbcolor



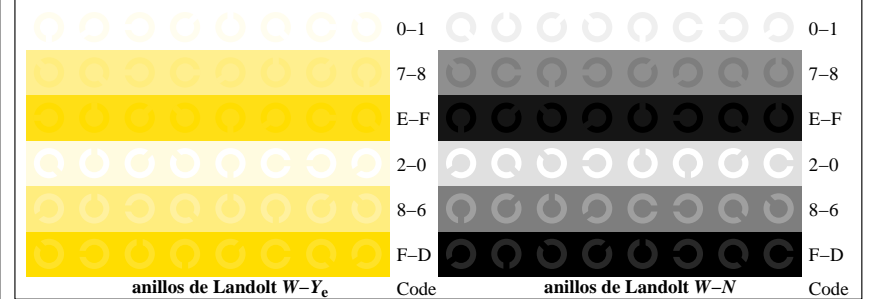
TS910-5, Fig. B2We: rejillas radial $W-C_e$; $W-M_e$; $W-Y_e$; $W-N$; PS operator $rgb \rightarrow rgb_e$ setrgbcolor



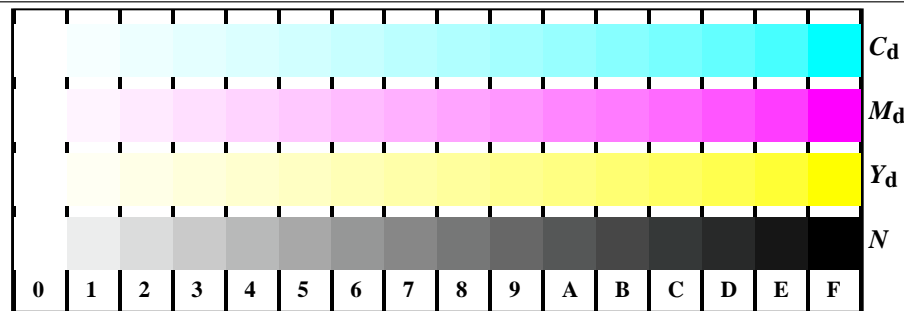
TS910-7, Fig. B3We: CIE 14 colores del test y 2 + 16 pasos de gris (sf); $rgb/cmy0 \rightarrow rgb_e$ setrgbcolor



TS911-5, Fig. B6We: anillos de Landolt $W-C_e$; $W-M_e$; PS operator $rgb \rightarrow rgb_e$ setrgbcolor



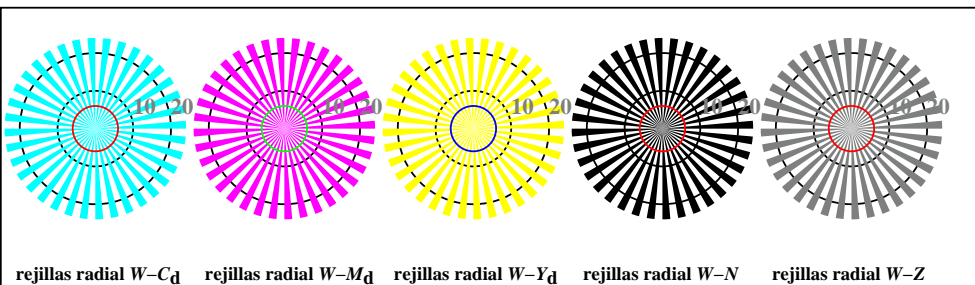
TS911-7, Fig. B7We: anillos de Landolt $W-Y_e$; $W-N$; PS operator $rgb \rightarrow rgb_e$ setrgbcolor



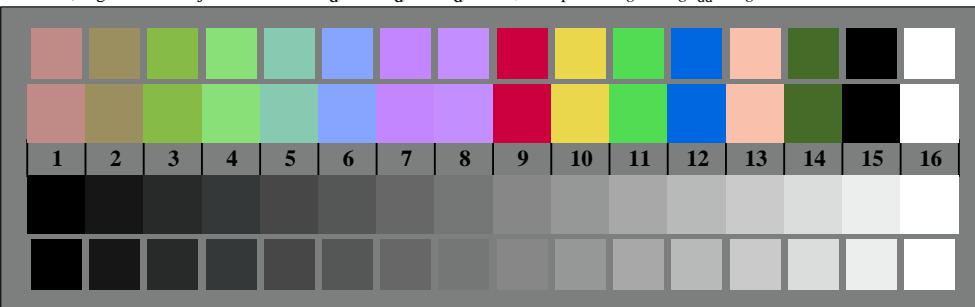
TS911-1, Fig. B4Wdd: 16 equidistante pasos $W-C_d$; $W-M_d$; $W-Y_d$; $W-N$; $rgb/cmy0 \rightarrow rgb_{dd}$ setrgbcolor

+-:.		lmno		pqrs		tuvw	
xyz;		hijk		lmno		pqrs	
tuvw		defg		hijk		+-:.	
pqrs		!abc		xyz;		defg	
lmno		+-:.		tuvw		!abc	
hijk		xyz;		defg		6	
defg		tuvw		pqrs		8	
!abc		!abc		8		N	
10		N		N		C _d	
		N		C _d		M _d	
		N		C _d		Y _d	
		N		C _d		Z	

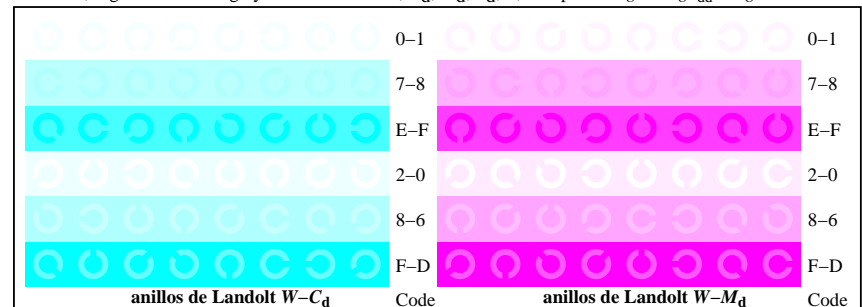
TS911-3, Fig. B5Wdd: codigo y Landolt anillos N; C_d; M_d; Y_d; Z; PS operator $rgb \rightarrow rgb_{dd}$ setrgbcolor



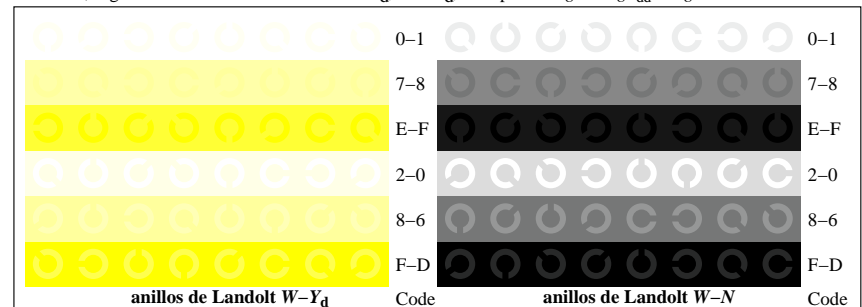
TS910-5, Fig. B2Wdd: rejillas radial $W-C_d$; $W-M_d$; $W-Y_d$; $W-N$; PS operator $rgb \rightarrow rgb_{dd}$ setrgbcolor



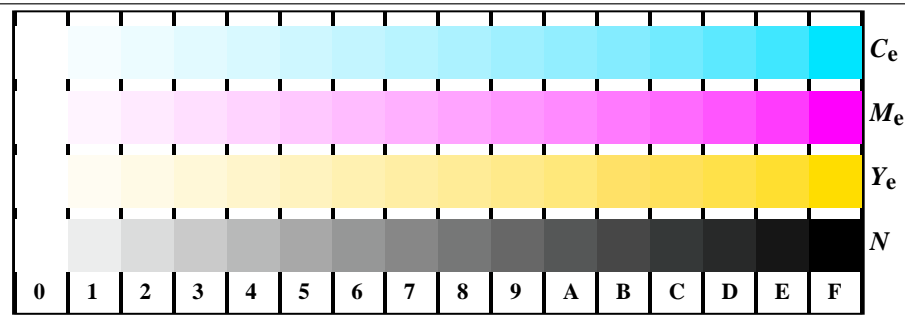
TS910-7, Fig. B3Wdd: CIE 14 colores del test y 2 + 16 pasos de gris (sf); $rgb/cmy0 \rightarrow rgb_{dd}$ setrgbcolor



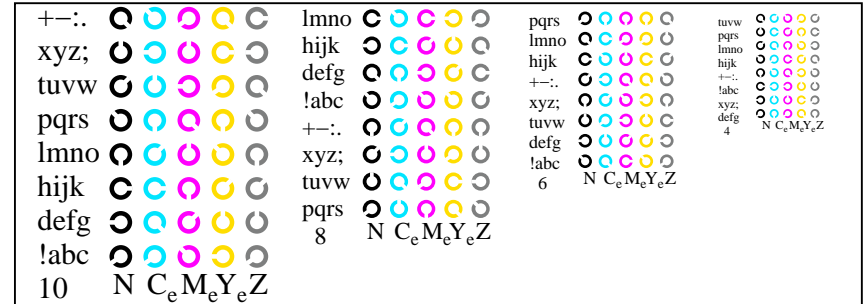
TS911-5, Fig. B6Wdd: anillos de Landolt $W-C_d$; $W-M_d$; PS operator $rgb \rightarrow rgb_{dd}$ setrgbcolor



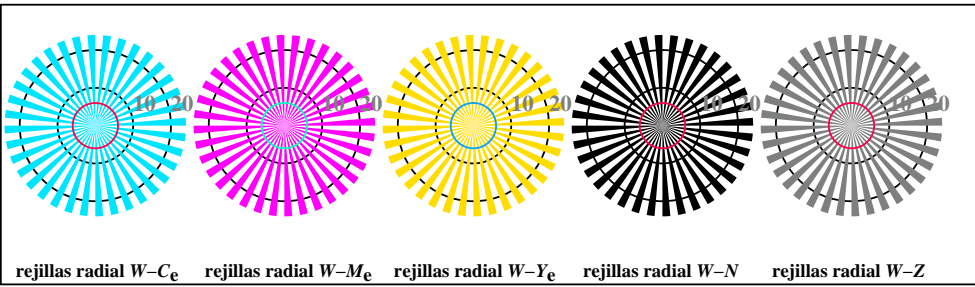
TS911-7, Fig. B7Wdd: anillos de Landolt $W-Y_d$; $W-N$; PS operator $rgb \rightarrow rgb_{dd}$ setrgbcolor



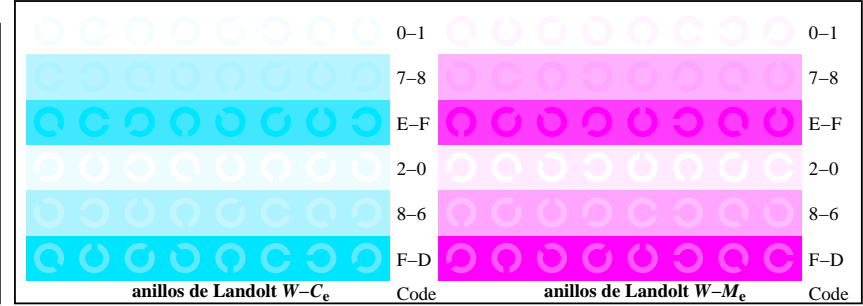
TS911-1, Fig. B4Wde: 16 equidistante pasos $W-C_e$; $W-M_e$; $W-Y_e$; $W-N$; $rgb/cmy0 \rightarrow rgb_{de}$ setrgbcolor



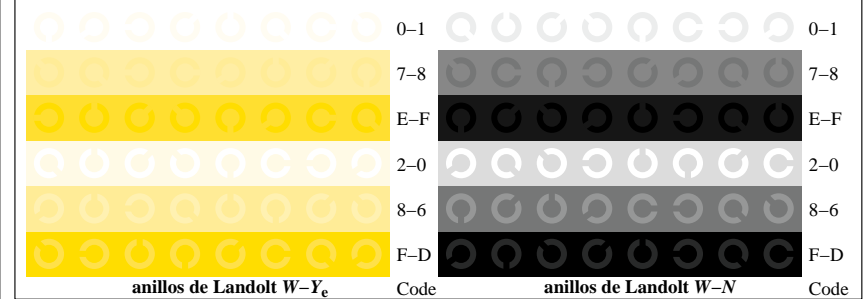
TS911-3, Fig. B5Wde: código y Landolt anillos N ; C_e ; M_e ; Y_e ; Z ; PS operator $rgb \rightarrow rgb_{de}$ setrgbcolor



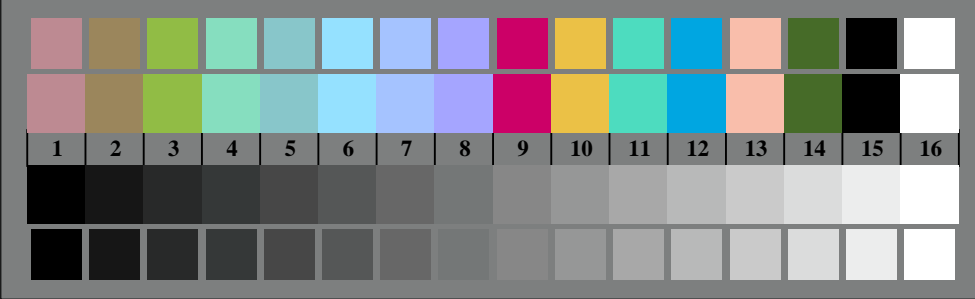
TS910-5, Fig. B2Wde: rejillas radial $W-C_e$; $W-M_e$; $W-Y_e$; $W-N$; PS operator $rgb \rightarrow rgb_{de}$ setrgbcolor



TS911-3, Fig. B5Wde: código y Landolt anillos N ; C_e ; M_e ; Y_e ; Z ; PS operator $rgb \rightarrow rgb_{de}$ setrgbcolor



TS911-5, Fig. B6Wde: anillos de Landolt $W-C_e$; $W-M_e$; PS operator $rgb \rightarrow rgb_{de}$ setrgbcolor



TS910-7, Fig. B3Wde: CIE 14 colores del test y 2 + 16 pasos de gris (sf); $rgb/cmy0 \rightarrow rgb_{de}$ setrgbcolor