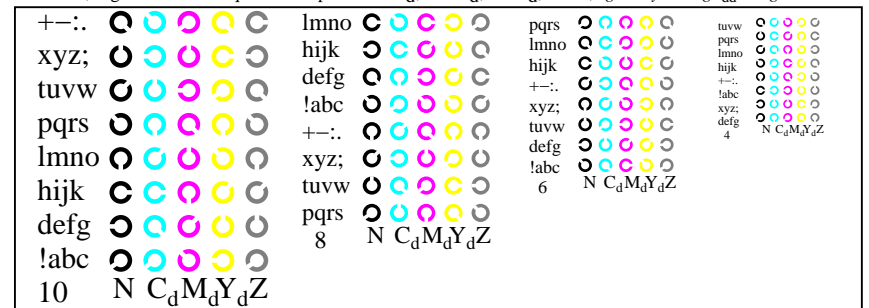
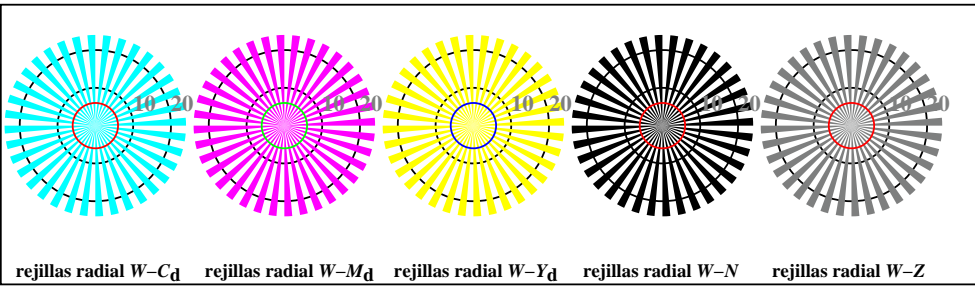


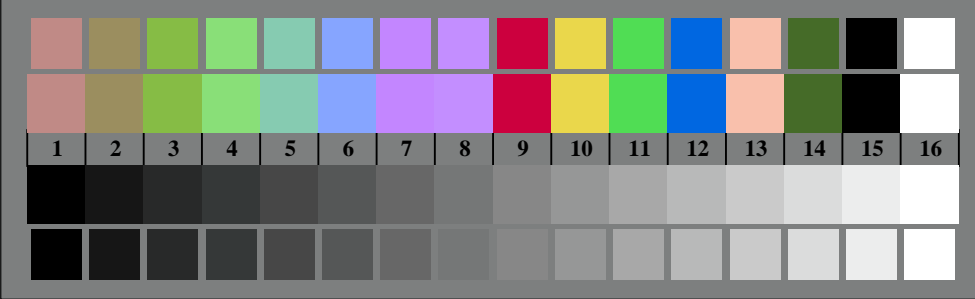
TS911-1, Fig. B4Wdd: 16 equidistante pasos $W-C_d$; $W-M_d$; $W-Y_d$; $W-N$; $rgb/cmy0 \rightarrow rgb_{dd}$ setrgbcolor



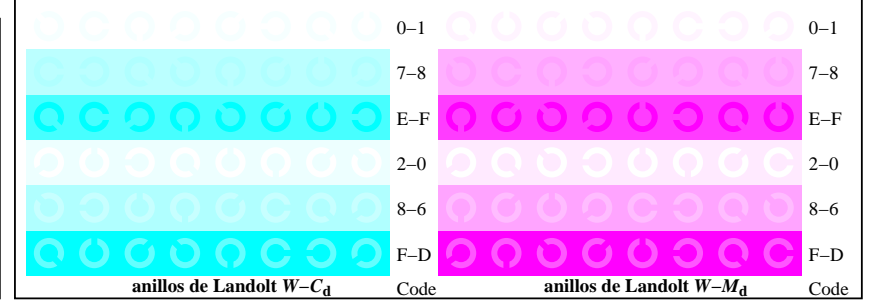
TS911-3, Fig. B5Wdd: código y Landolt anillos N ; C_d ; M_d ; Y_d ; Z ; PS operator $rgb \rightarrow rgb_{dd}$ setrgbcolor



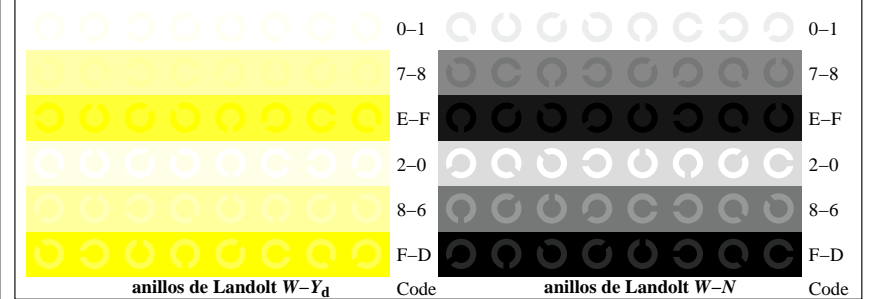
TS910-5, Fig. B2Wdd: rejillas radial $W-C_d$; $W-M_d$; $W-Y_d$; $W-N$; PS operator $rgb \rightarrow rgb_{dd}$ setrgbcolor



TS910-7, Fig. B3Wdd: CIE 14 colores del test y 2 + 16 pasos de gris (sf); $rgb/cmy0 \rightarrow rgb_{dd}$ setrgbcolor



TS911-5, Fig. B6Wdd: anillos de Landolt $W-C_d$; $W-M_d$; PS operator $rgb \rightarrow rgb_{dd}$ setrgbcolor



TS911-7, Fig. B7Wdd: anillos de Landolt $W-Y_d$; $W-N$; PS operator $rgb \rightarrow rgb_{dd}$ setrgbcolor