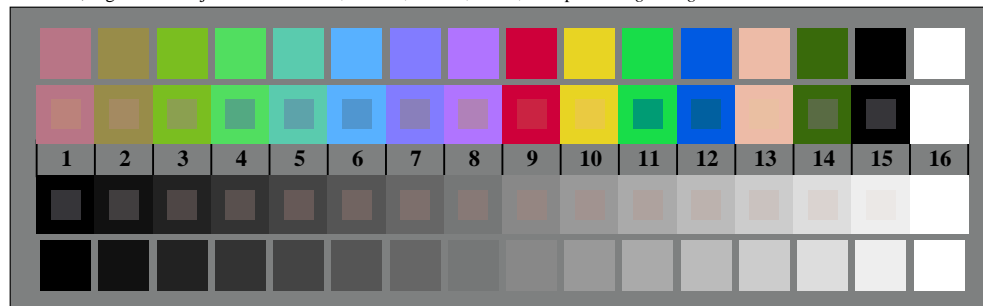
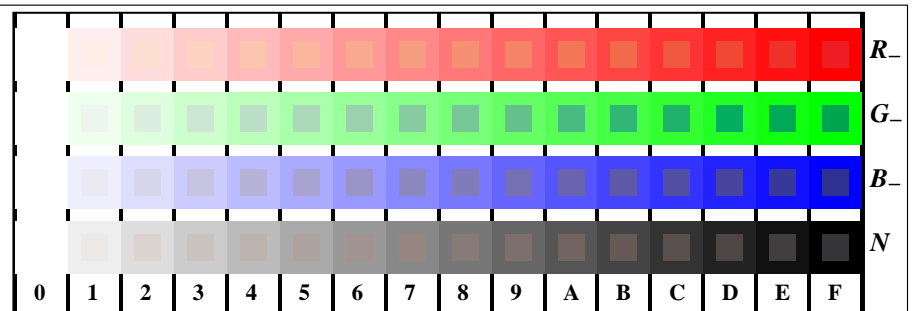


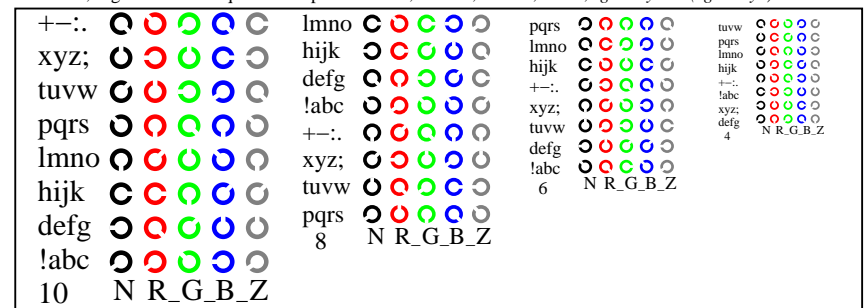
TS870-5, Fig. D2W-: rejillas radial W-R_; W-G_; W-B_; W-N_; PS operator: *rgb setrgbcolor*



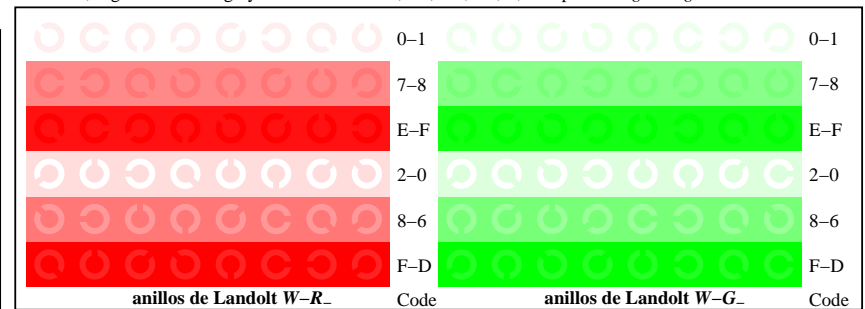
TS870-7, Fig. D3W-: CIE 14 colores del test y 2 + 16 pasos de gris (sf); PS operator: *rgb/cmy0 set(rgb/cmyk)color*



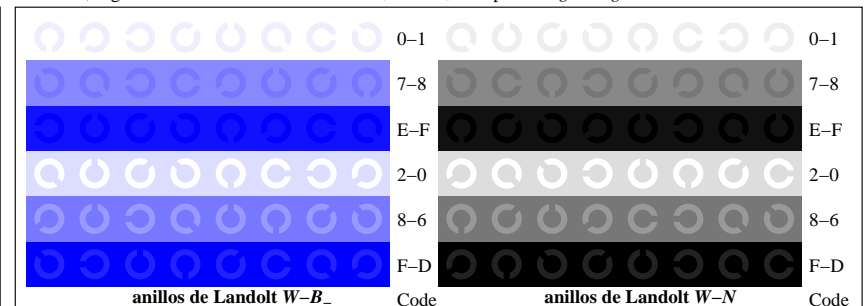
TS871-1, Fig. D4W-: 16 equidistante pasos W-R_; W-G_; W-B_; W-N_; *rgb/cmy0 set(rgb/cmyk)color*



TS871-3, Fig. D5W-: codigo y Landolt anillos N; R_; G_; B_; Z; PS operator: *rgb setrgbcolor*



TS871-5, Fig. D6W-: anillos de Landolt W-R_; W-G_; PS operator: *rgb setrgbcolor*



TS871-7, Fig. D7W-: anillos de Landolt W-B_; W-N_; PS operator: *rgb setrgbcolor*