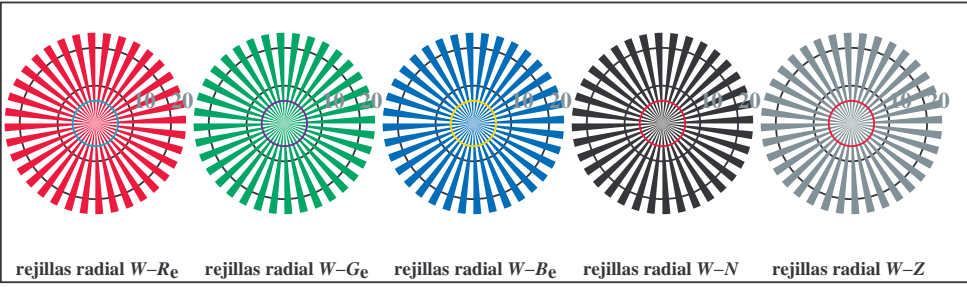


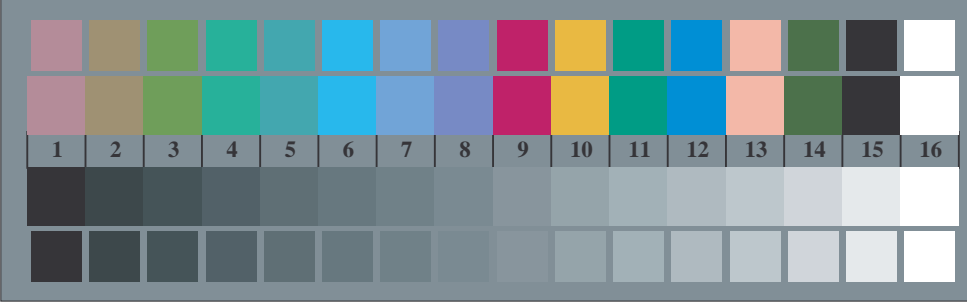
vea archivos semejantes: <http://130.149.60.45/~farbmetrik/TS86/TS86.HTM>
Información técnica: <http://www.ps.bam.de> o <http://130.149.60.45/~farbmetrik>



TS860-3, Fig. D1Wde: motivos florales, CIE 14 colores del test y 2 + 16 pasos de gris (sf); ; PS operator: 4 colorimage



rejillas radial W-Re rejillas radial W-Ge rejillas radial W-Be rejillas radial W-N rejillas radial W-Z



TS860-7, Fig. D3Wde: CIE 14 colores del test y 2 + 16 pasos de gris (sf); PS operator:rgb/cmy0->rgbde setrgbcolor

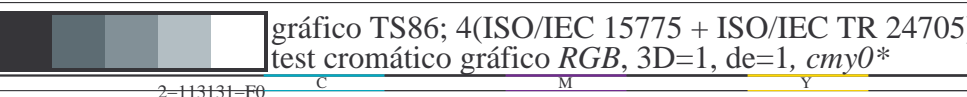
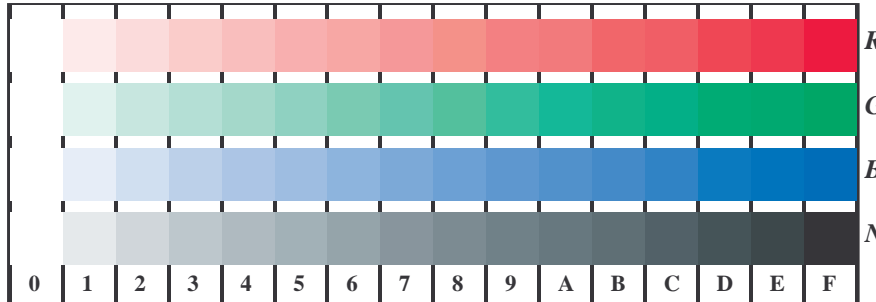
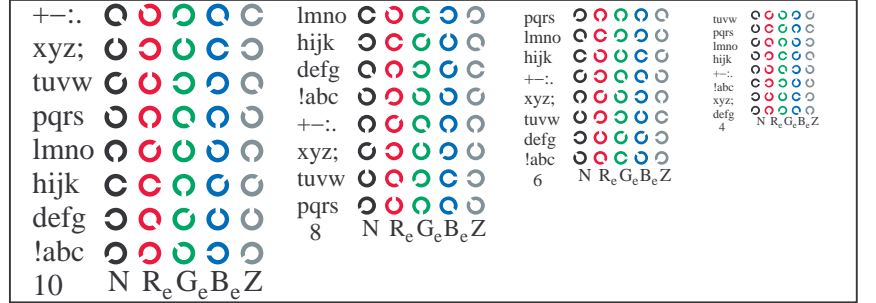


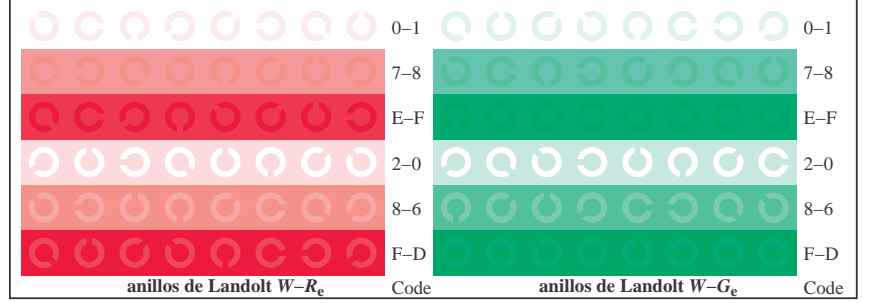
gráfico TS86; 4(ISO/IEC 15775 + ISO/IEC TR 24705)
test cromático gráfico RGB, 3D=1, de=1, cmy0*



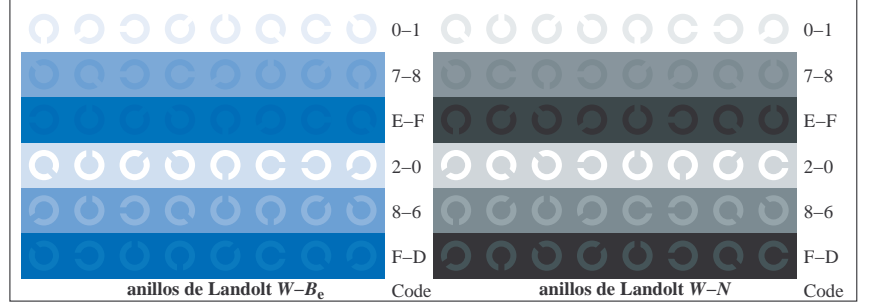
TS861-1, Fig. D4Wde: 16 equidistante pasos W-Re; W-Ge; W-Be; W-N; rgb/cmy0->rgbde setrgbcolor



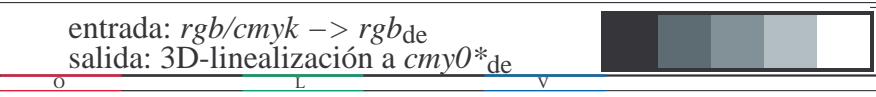
TS861-3, Fig. D5Wde: código y Landolt anillos N; Re; Ge; Be; Z; PS operator: rgb->rgbde setrgbcolor



TS861-5, Fig. D6Wde: anillos de Landolt W-Re; W-Ge; PS operator:rgb->rgbde setrgbcolor



TS861-7, Fig. D7Wde: anillos de Landolt W-Be; W-N; PS operator:rgb->rgbde setrgbcolor



entrada: rgb/cmyk -> rgbde
salida: 3D-linealización a cmy0*de

TUB matrícula: 20150701-TS86/TS86L0FP.PDF /PS
aplicación para la medida salida en la impresión offset, separacióncmy0* (CMY0)

TUB material: code=th4t4