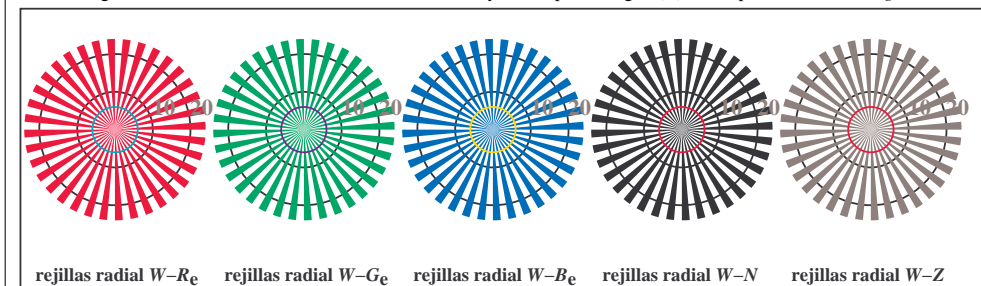
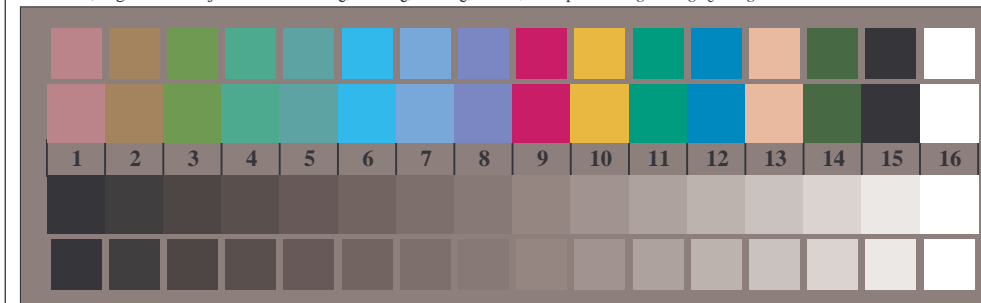




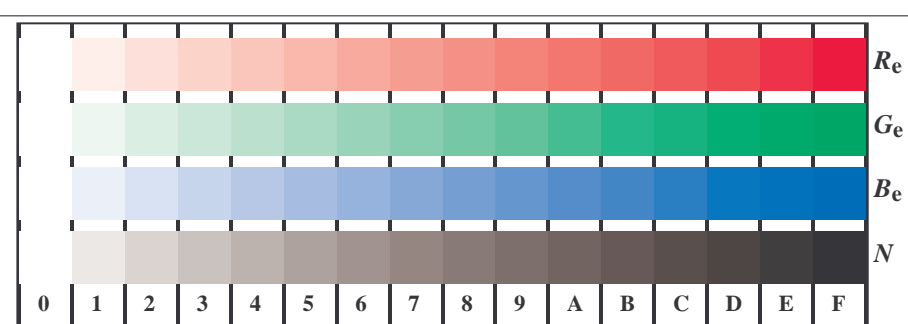
TS860-3, Fig. D1We: motivos florales, CIE 14 colores del test y 2 + 16 pasos de gris (sf); PS operator: 4 colorimage



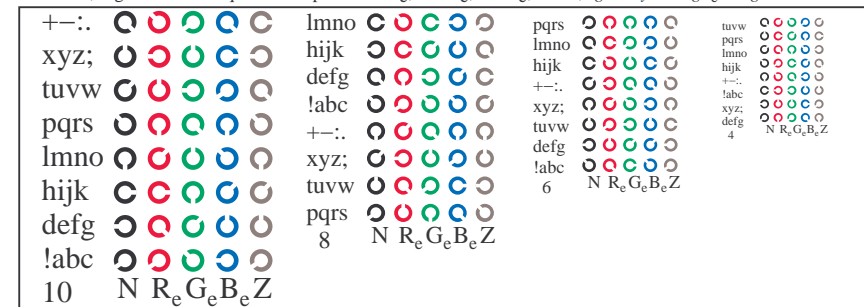
TS860-5, Fig. D2We: rejillas radial $W-R_e$; $W-G_e$; $W-B_e$; $W-N$; PS operator: $rgb \rightarrow rgb_e$ setrgbcolor



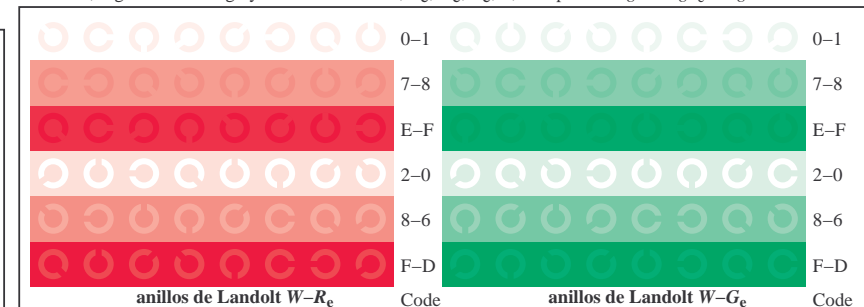
TS860-7, Fig. D3We: CIE 14 colores del test y 2 + 16 pasos de gris (sf); PS operator: $rgb/cmy0 \rightarrow rgb_e$ setrgbcolor



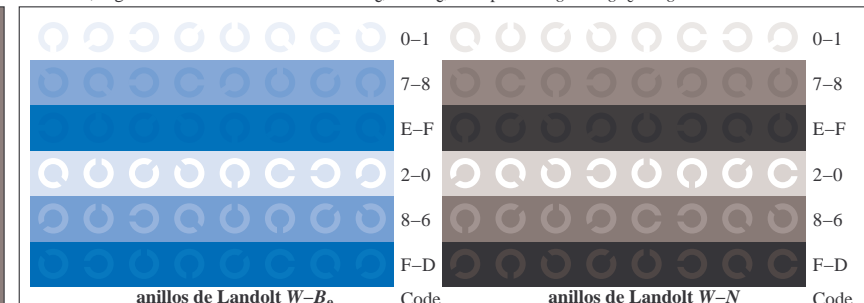
TS861-1, Fig. D4We: 16 equidistante pasos $W-R_e$; $W-G_e$; $W-B_e$; $W-N$; $rgb/cmy0 \rightarrow rgb_e$ setrgbcolor



TS861-3, Fig. D5We: código y Landolt anillos N ; R_e ; G_e ; B_e ; Z ; PS operator: $rgb \rightarrow rgb_e$ setrgbcolor



TS861-5, Fig. D6We: anillos de Landolt $W-R_e$; $W-G_e$; PS operator: $rgb \rightarrow rgb_e$ setrgbcolor



TS861-7, Fig. D7We: anillos de Landolt $W-B_e$; $W-N$; PS operator: $rgb \rightarrow rgb_e$ setrgbcolor