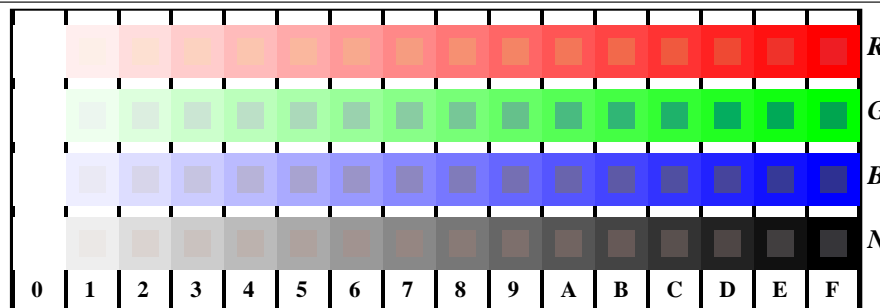


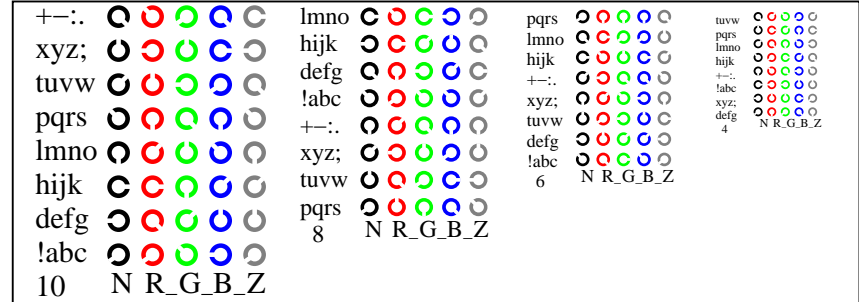
vea archivos semejantes: <http://130.149.60.45/~farbmetrik/TS85/TS85.HTM>
información técnica: <http://www.ps.bam.de> o <http://130.149.60.45/~farbmetrik>

TUB matrícula: 20150701-TS85/TS85L0NP.PDF /.PS
aplicación para la medida salida en la impresión offset

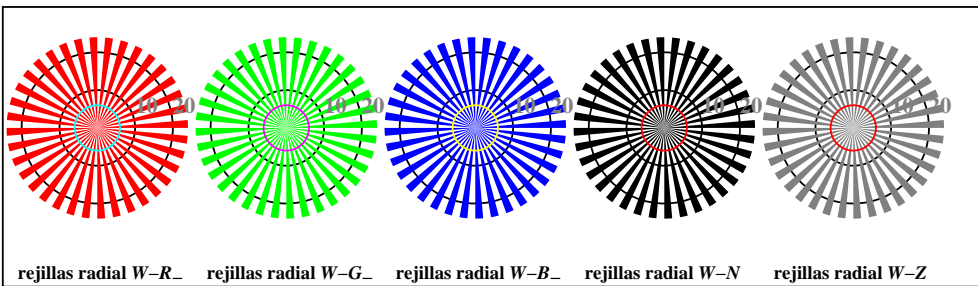
TUB material: code=rh4ta



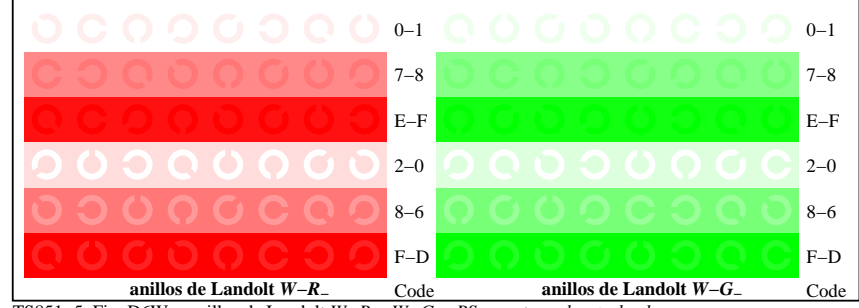
TS851-1, Fig. D4W-: 16 equidistante pasos W-R_; W-G_; W-B_; W-N; rgb/cmy0 set(rgb/cmyk)color



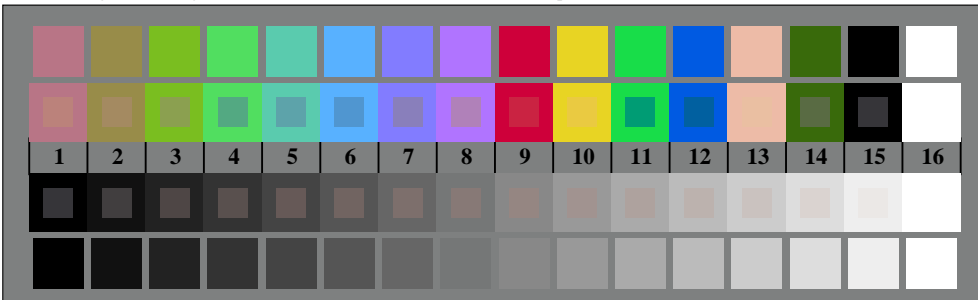
TS851-3, Fig. D5W-: codigo y Landolt anillos N; R_; G_; B_; Z; PS operator rgb->rgb_setrgbcolor



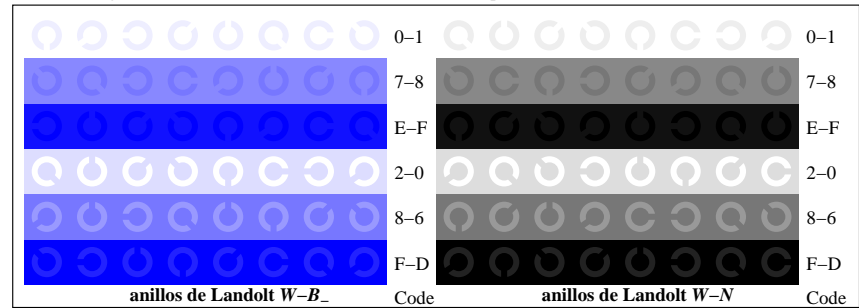
TS850-5, Fig. D2W-: rejillas radial W-R_; W-G_; W-B_; W-N; PS operator rgb->rgb_setrgbcolor



TS851-5, Fig. D6W-: anillos de Landolt W-R_; W-G_; PS operator rgb_setrgbcolor



TS850-7, Fig. D3W-: CIE 14 colores del test y 2 + 16 pasos de gris (sf); rgb/cmy0 set(rgb/cmyk)color



TS851-7, Fig. D7W-: anillos de Landolt W-B_; W-N; PS operator rgb_setrgbcolor



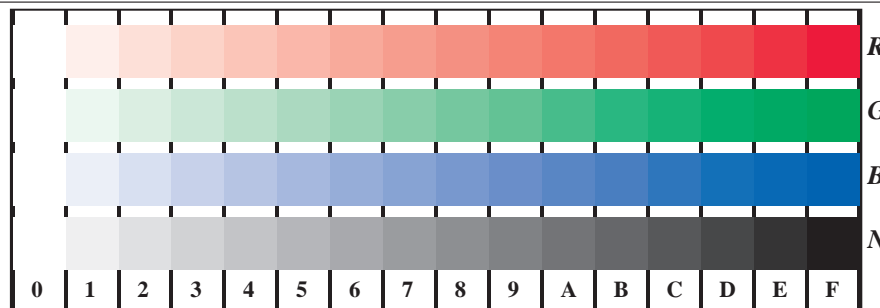
gráfico TS85; 4(ISO/IEC 15775 + ISO/IEC TR 24705)
test cromático gráfico RGB

entrada: rgb/cmyk -> w/rgb/cmyk_
salida: ningún cambio

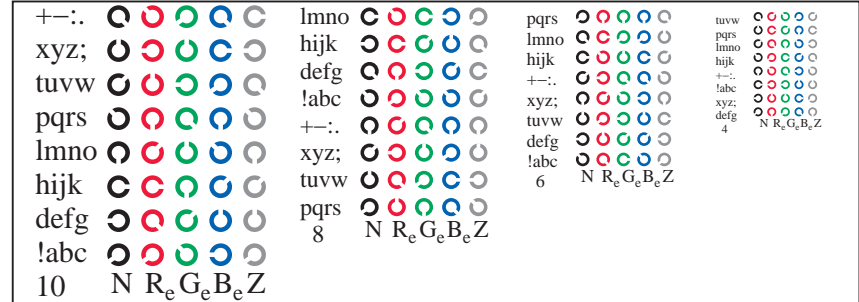


vea archivos semejantes: <http://130.149.60.45/~farbmetrik/TS85/TS85.HTM>
información técnica: <http://www.ps.bam.de> o <http://130.149.60.45/~farbmetrik>

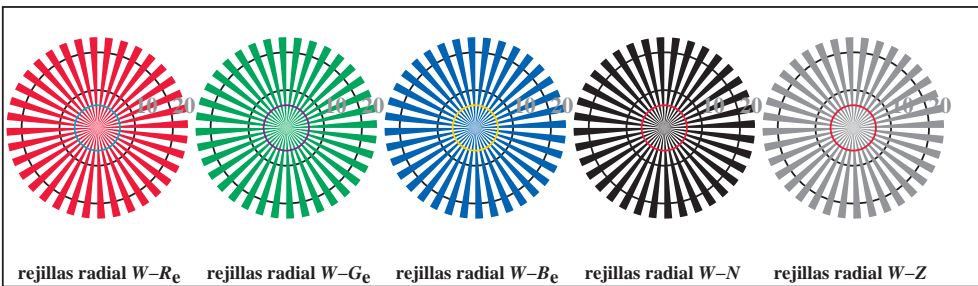
TUB matrícula: 20150701-TS85/TS85L0NP.PDF /PS
aplicación para la medida salida en la impresión offset, separacióncmykn6 (CMYK)
TUB material: code=rh4ta



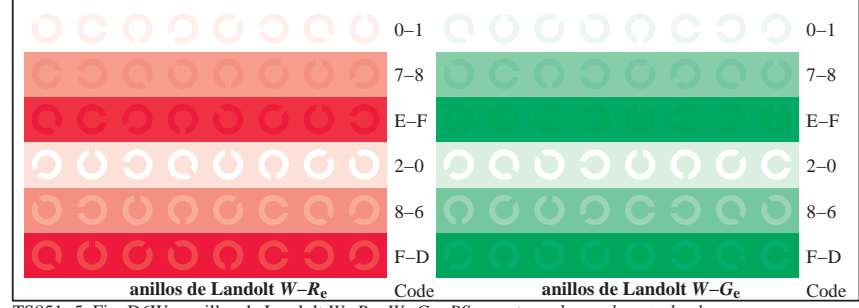
TS851-1, Fig. D4We: 16 equidistante pasos W-Re; W-Ge; W-Be; W-N; rgb/cmy0->rgb_e setrgbcolor



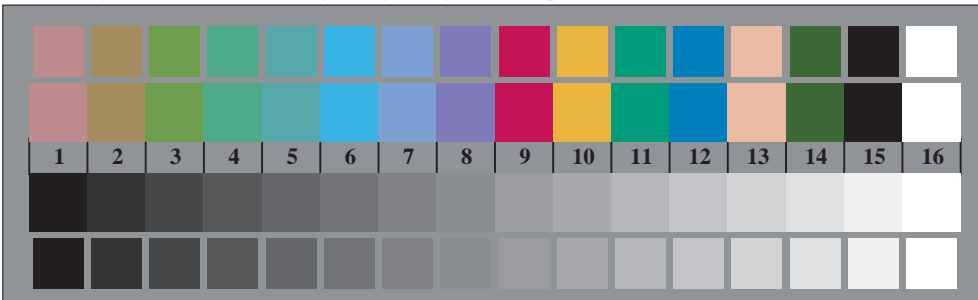
TS851-3, Fig. D5We: código y Lundt anillosN; Re; Ge; Be; Z; PS operator rgb->rgb_e setrgbcolor



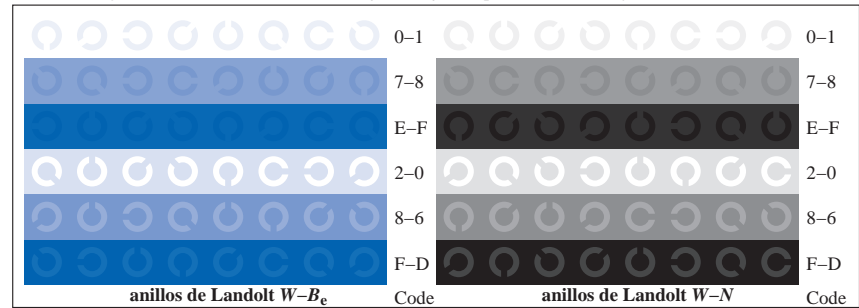
TS850-5, Fig. D2We: rejillas radial W-Re; W-Ge; W-Be; W-N; PS operator rgb->rgb_e setrgbcolor



TS851-5, Fig. D6We: anillos de Lundt W-Re; W-Ge; PS operator rgb->rgb_e setrgbcolor



TS850-7, Fig. D3We: CIE 14 colores del test y 2 + 16 pasos de gris (sf); rgb/cmy0->rgb_e setrgbcolor



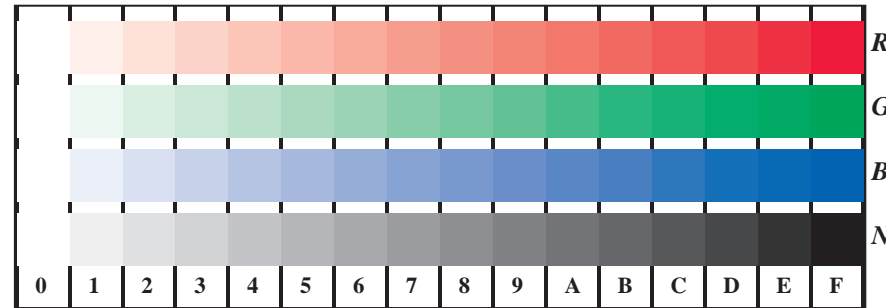
TS851-7, Fig. D7We: anillos de Lundt W-Be; W-N; PS operator rgb->rgb_e setrgbcolor



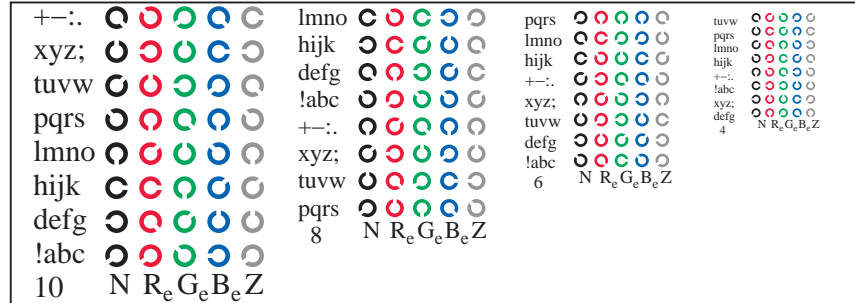
gráfico TS85; 4(ISO/IEC 15775 + ISO/IEC TR 24705)
test cromático gráfico RGB, 3D=0, de=1, cmyk

entrada: rgb/cmyk -> rgb_e
salida: transfiera a cmyk_e

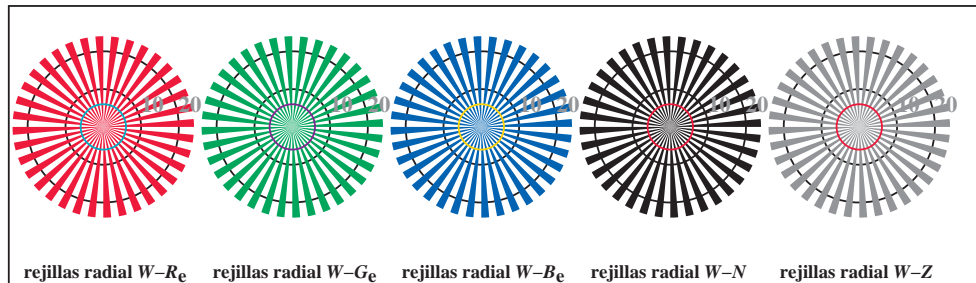




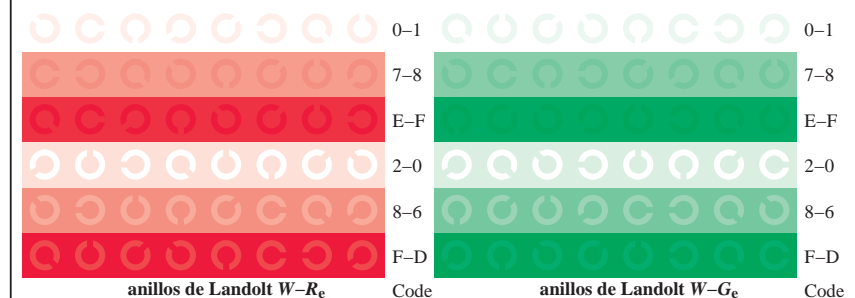
TS851-1, Fig. D4We: 16 equidistante pasos W-Re; W-Ge; W-Be; W-N; rgb/cmy0->rgb_e setrgbcolor



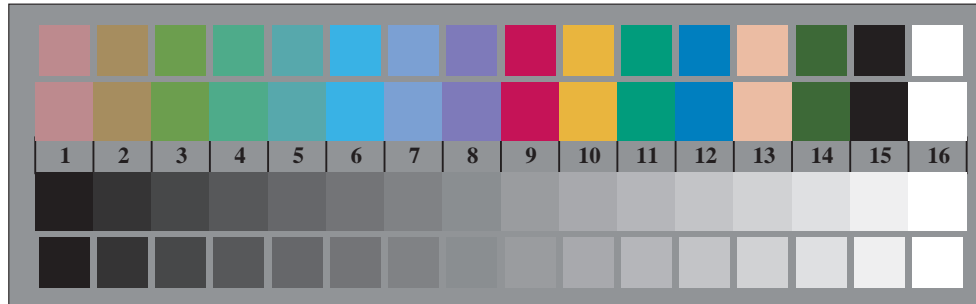
TS851-3, Fig. D5We: codigo y Landolt anillosN; Re; Ge; Be; Z; PS operator rgb->rgb_e setrgbcolor



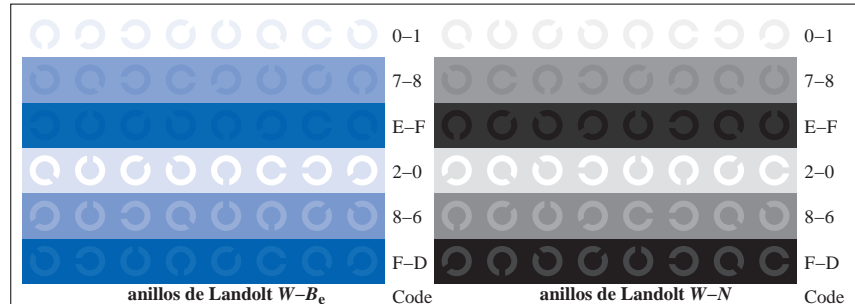
TS850-5, Fig. D2We: rejillas radial W-Re; W-Ge; W-Be; W-N; PS operator rgb->rgb_e setrgbcolor



TS851-5, Fig. D6We: anillos de Landolt W-Re; W-Ge; PS operator rgb->rgb_e setrgbcolor



TS850-7, Fig. D3We: CIE 14 colores del test y 2 + 16 pasos de gris (sf); rgb/cmy0->rgb_e setrgbcolor



TS851-7, Fig. D7We: anillos de Landolt W-Be; W-N; PS operator rgb->rgb_e setrgbcolor



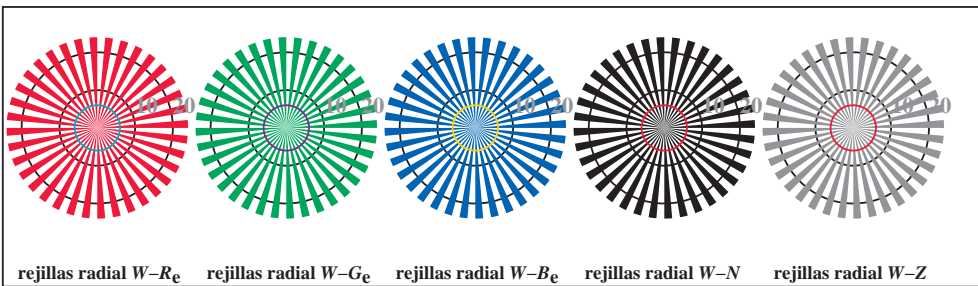
gráfico TS85; 4(ISO/IEC 15775 + ISO/IEC TR 24705)
test cromático gráfico RGB, 3D=0, de=1, cmyk

entrada: rgb/cmyk -> rgb_e
salida: transfiera a cmyk_e

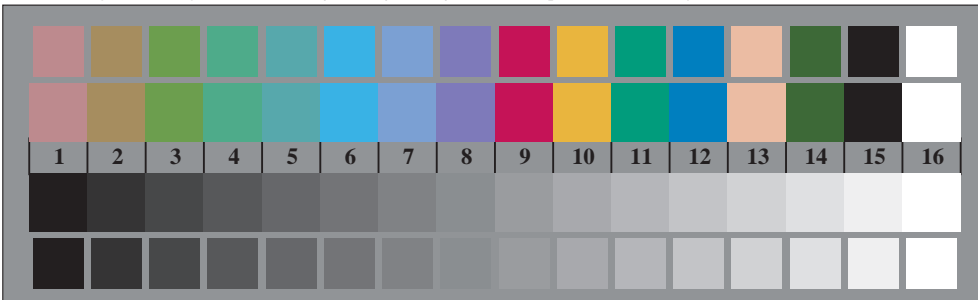


vea archivos semejantes: <http://130.149.60.45/~farbmetrik/TS85/TS85.HTM>
 información técnica: <http://www.ps.bam.de> o <http://130.149.60.45/~farbmetrik>

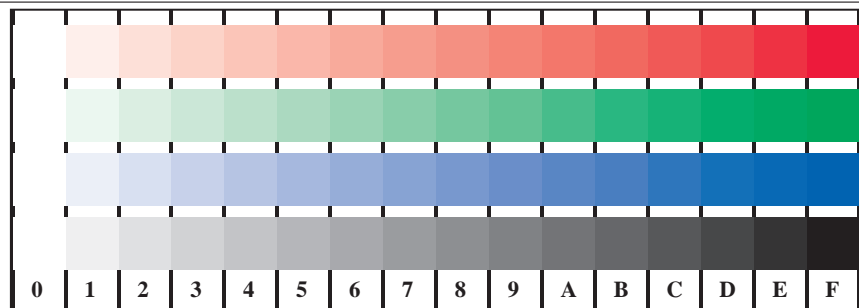
TUB matrícula: 20150701-TS85/TS85L0NP.PDF /PS
 aplicación para la medida salida en la impresión offset, separacióncmykn6 (CMYK)
 TUB material: code=rh4ta



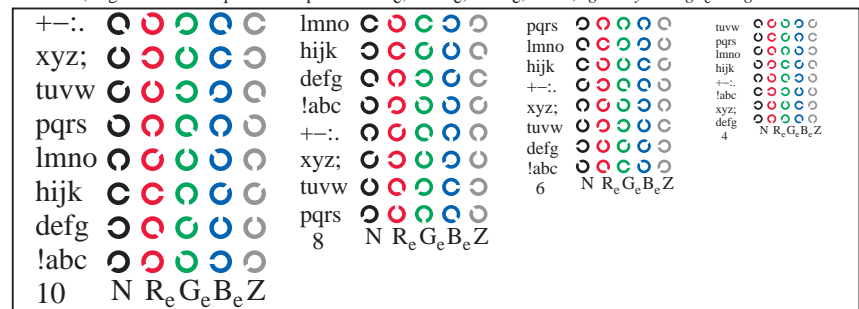
TS850-5, Fig. D2We: rejillas radial W-Re; W-Ge; W-Be; W-N; PS operator *rgb*→*rgb_e setrgbcolor*



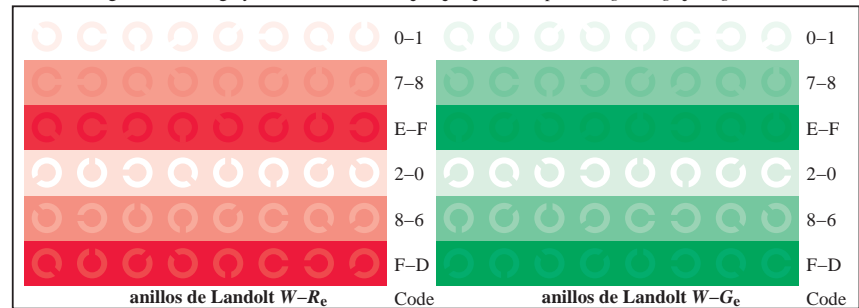
TS850-7, Fig. D3We: CIE 14 colores del test y 2 + 16 pasos de gris (sf); *rgb/cmy0*→*rgb_e setrgbcolor*



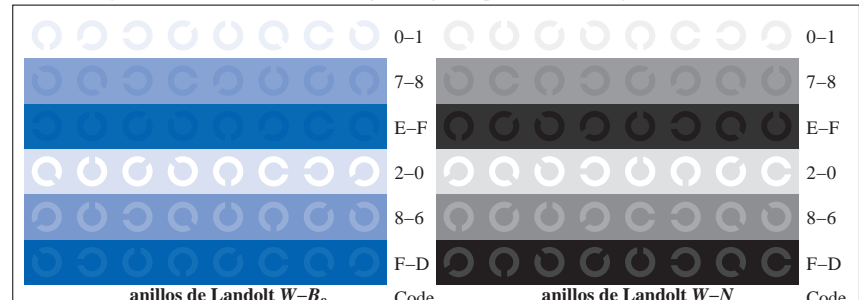
TS851-1, Fig. D4We: 16 equidistante pasos W-Re; W-Ge; W-Be; W-N; *rgb/cmy0*→*rgb_e setrgbcolor*



TS851-3, Fig. D5We: código y Landolt anillosN; Re; Ge; Be; Z; PS operator *rgb*→*rgb_e setrgbcolor*



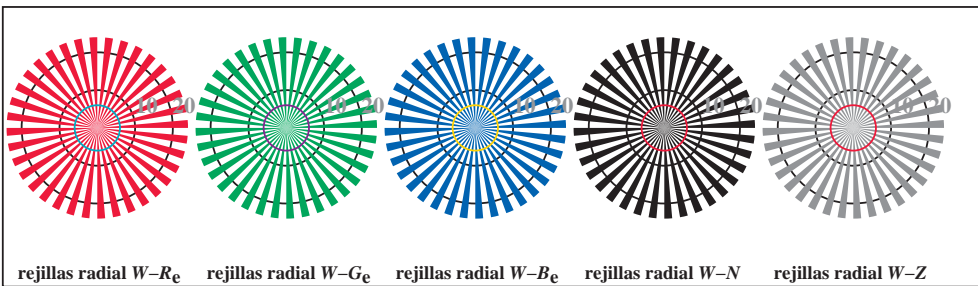
TS851-5, Fig. D6We: anillos de Landolt W-Re; W-Ge; PS operator *rgb*→*rgb_e setrgbcolor*



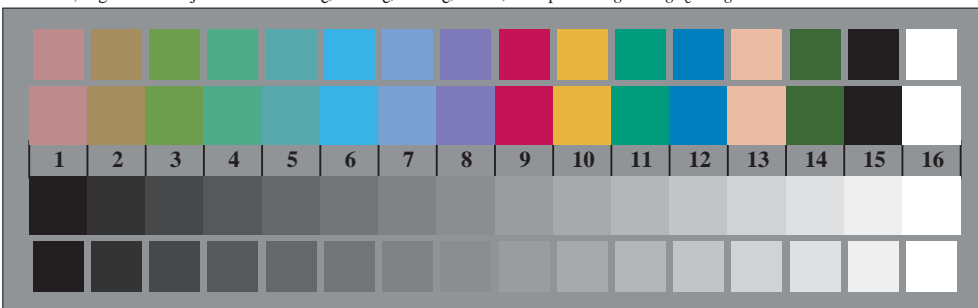
TS851-7, Fig. D7We: anillos de Landolt W-Be; W-N; PS operator *rgb*→*rgb_e setrgbcolor*

gráfico TS85; 4(ISO/IEC 15775 + ISO/IEC TR 24705)
 test cromático gráfico RGB, 3D=0, de=1, *cmyk*

entrada: *rgb/cmyk* → *rgb_e*
 salida: transfiera a *cmyk_e*

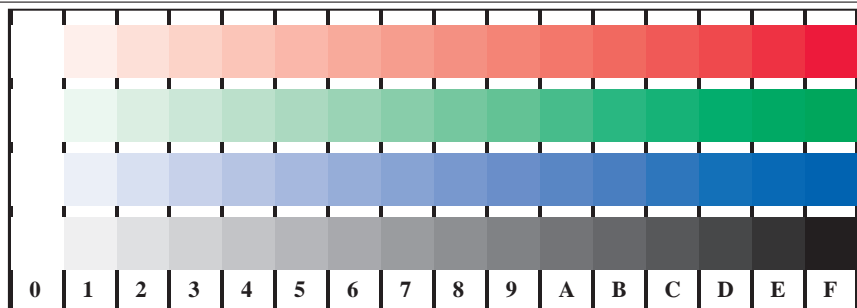


TS850-5, Fig. D2We: rejillas radial W-Re; W-Ge; W-Be; W-N; PS operator *rgb*→*rgb_e setrgbcolor*

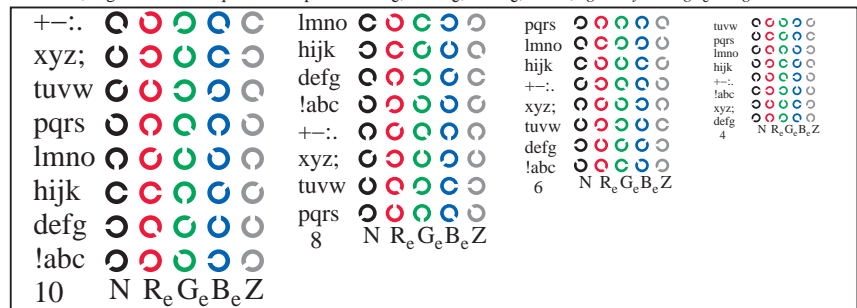


TS850-7, Fig. D3We: CIE 14 colores del test y 2 + 16 pasos de gris (sf); *rgb/cmy0*→*rgb_e setrgbcolor*

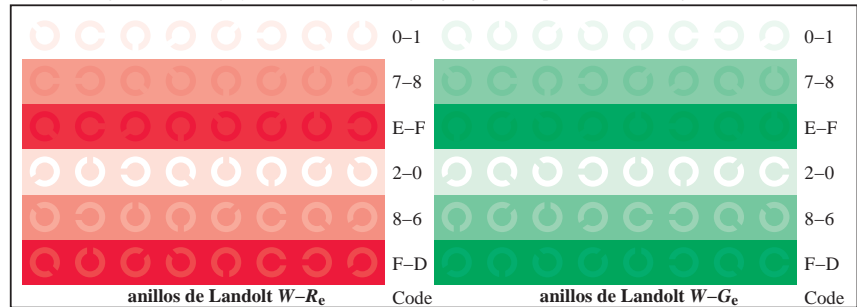
gráfico TS85; 4(ISO/IEC 15775 + ISO/IEC TR 24705)
test cromático gráfico RGB, 3D=0, de=1, *cmyk*



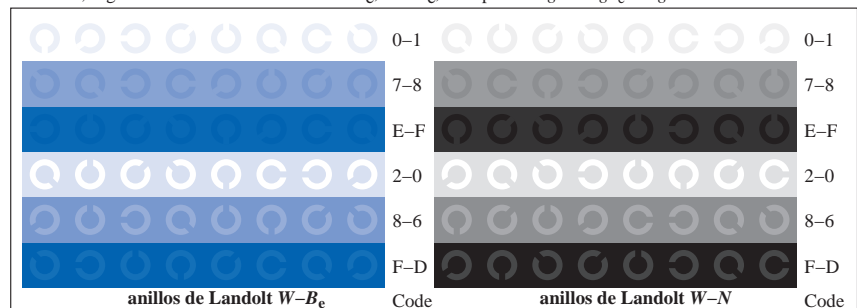
TS851-1, Fig. D4We: 16 equidistante pasos W-Re; W-Ge; W-Be; W-N; *rgb/cmy0*→*rgb_e setrgbcolor*



TS851-3, Fig. D5We: código y Landolt anillos N; R_e; G_e; B_e; Z; PS operator *rgb*→*rgb_e setrgbcolor*

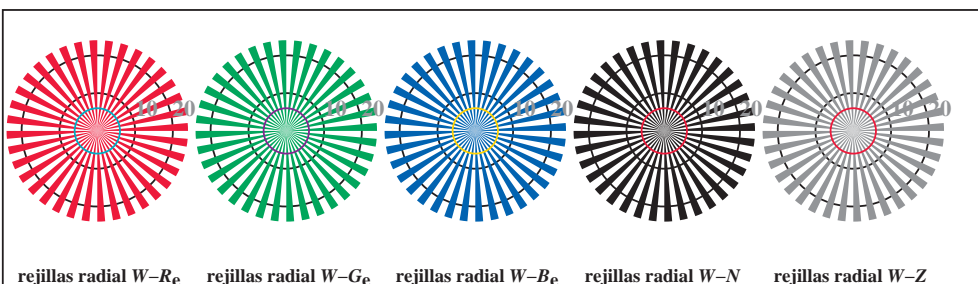


TS851-5, Fig. D6We: anillos de Landolt W-Re; W-Ge; PS operator *rgb*→*rgb_e setrgbcolor*

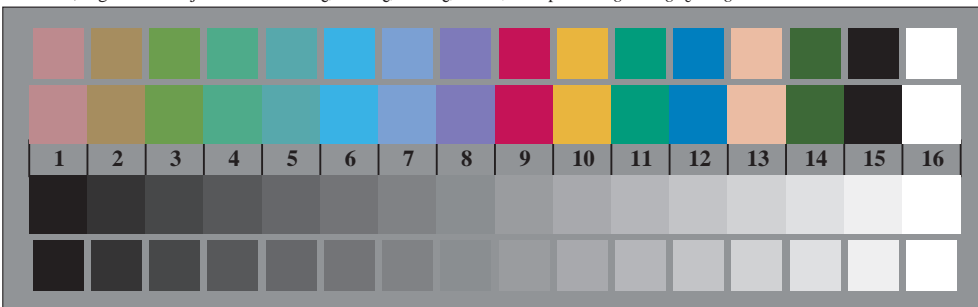


TS851-7, Fig. D7We: anillos de Landolt W-Be; W-N; PS operator *rgb*→*rgb_e setrgbcolor*

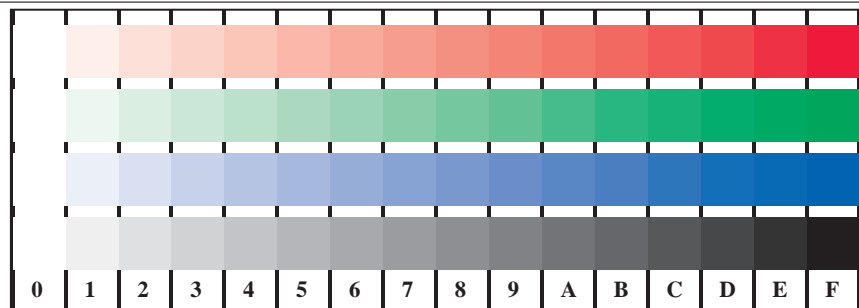
entrada: *rgb/cmyk* → *rgb_e*
salida: transfiera a *cmyk_e*



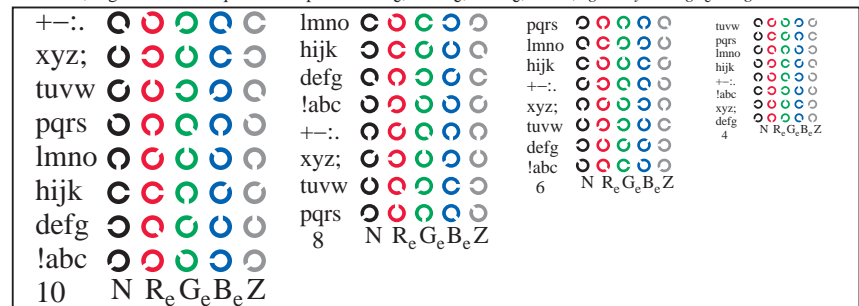
TS850-5, Fig. D2We: rejillas radial W-Re; W-Ge; W-Be; W-N; PS operator *rgb*→*rgb_e setrgbcolor*



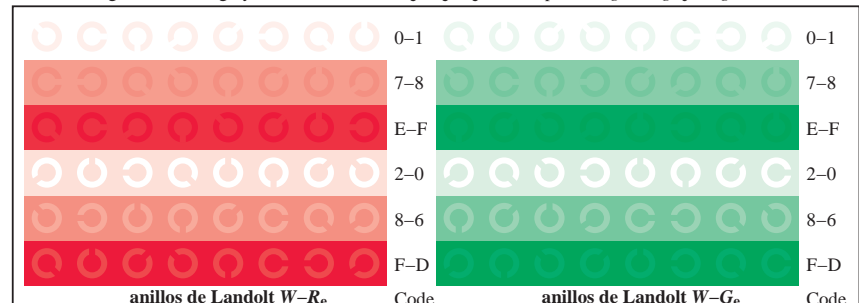
TS850-7, Fig. D3We: CIE 14 colores del test y 2 + 16 pasos de gris (sf); *rgb/cmy0*→*rgb_e setrgbcolor*



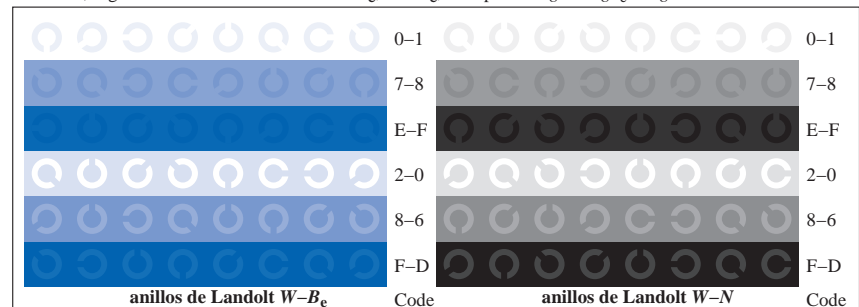
TS851-1, Fig. D4We: 16 equidistante pasos W-Re; W-Ge; W-Be; W-N; *rgb/cmy0*→*rgb_e setrgbcolor*



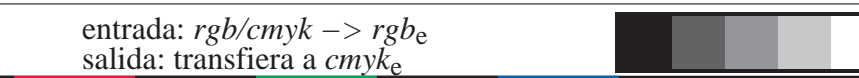
TS851-3, Fig. D5We: código y Landolt anillosN; Re; Ge; Be; Z; PS operator *rgb*→*rgb_e setrgbcolor*

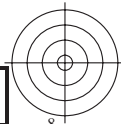
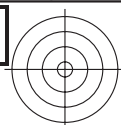


TS851-5, Fig. D6We: anillos de Landolt W-Re; W-Ge; PS operator *rgb*→*rgb_e setrgbcolor*



TS851-7, Fig. D7We: anillos de Landolt W-Be; W-N; PS operator *rgb*→*rgb_e setrgbcolor*

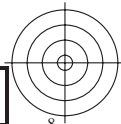
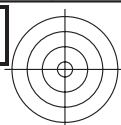


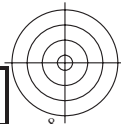
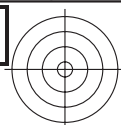


2-013630-F0

2-013630-F0

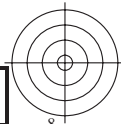
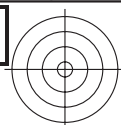






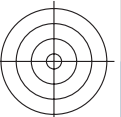
2-013830-F0

2-013830-F0



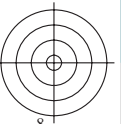
2-013930-F0

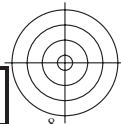
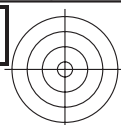
2-013930-F0

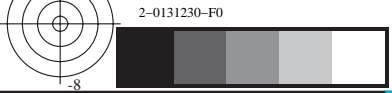


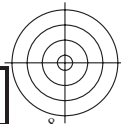
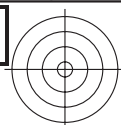
TUB matrícula: 20150701-TS85/TS85L0NP.PDF /.PS TUB material: code=rh4ta
aplicación para la medida salida en la impresión offset, separacióncmykn6 (CMYK)

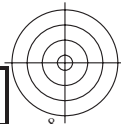
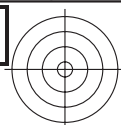
vea archivos semejantes: <http://130.149.60.45/~farbmetrik/TS85/TS85.HTM>
información técnica: <http://www.ps.bam.de> o <http://130.149.60.45/~farbmetrik>



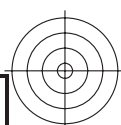
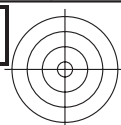


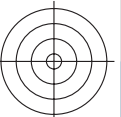
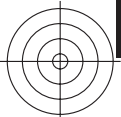






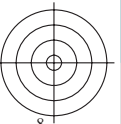
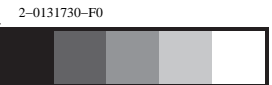


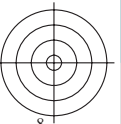
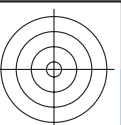


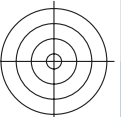
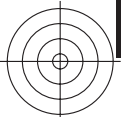


TUB matrícula: 20150701-TS85/TS85L0NP.PDF /.PS TUB material: code=rh4ta
aplicación para la medida salida en la impresión offset, separacióncmykn6 (CMYK)

vea archivos semejantes: <http://130.149.60.45/~farbmetrik/TS85/TS85.HTM>
información técnica: <http://www.ps.bam.de> o <http://130.149.60.45/~farbmetrik>







TUB matrícula: 20150701-TS85/TS85L0NP.PDF /.PS TUB material: code=rh4ta
aplicación para la medida salida en la impresión offset, separacióncmykn6 (CMYK)

vea archivos semejantes: <http://130.149.60.45/~farbmetrik/TS85/TS85.HTM>
información técnica: <http://www.ps.bam.de> o <http://130.149.60.45/~farbmetrik>

