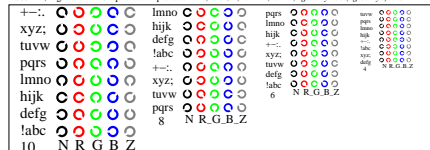
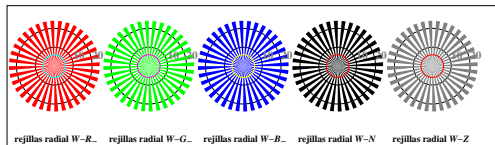


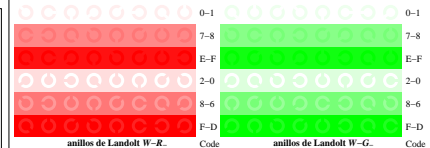
TS851-1, Fig. D4W--: 16 equidistante pasos W-R.; W-G.; W-B.; W-N; *rgb/cmy0 set/rgb/cmyk/color*



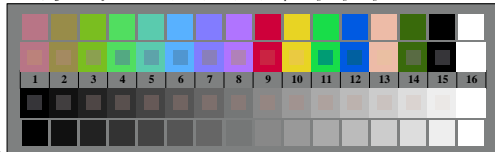
TS851-3, Fig. D5W--: código y Landolt anillos N.; R.; G.; B.; Z; *PS operator rgb->rgb_setrgbcolor*



TS850-5, Fig. D2W--: rejillas radial W-R.; W-G.; W-B.; W-N; *PS operator rgb->rgb_setrgbcolor*

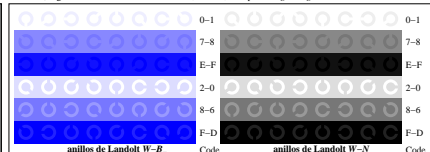


TS851-5, Fig. D6W--: anillos de Landolt W-R.; W-G.; *PS operator rgb_setrgbcolor*



TS850-7, Fig. D3W--: CIE 14 colores del test y 2 + 16 pasos de gris (sf); *rgb/cmy0 set/rgb/cmyk/color*

gráfico TS85; 4(ISO/IEC 15775 + ISO/IEC TR 24705)
test cromático gráfico RGB



TS851-7, Fig. D7W--: anillos de Landolt W-B.; W-N; *PS operator rgb_setrgbcolor*

entrada: *rgb/cmyk* -> *w/rgb/cmyk*
salida: ningún cambio

