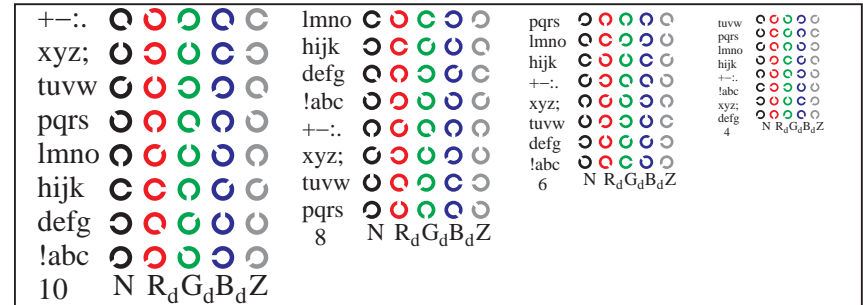
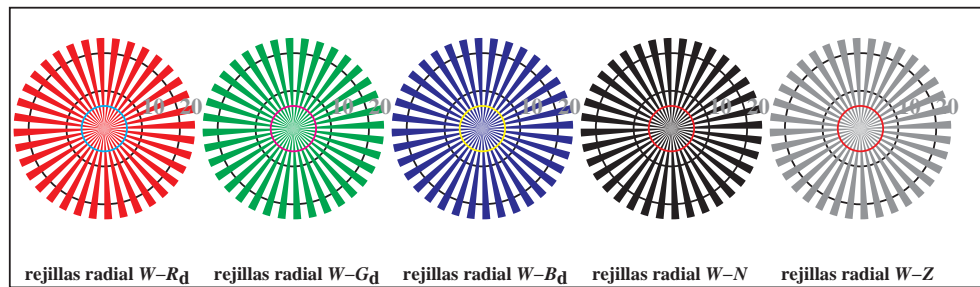


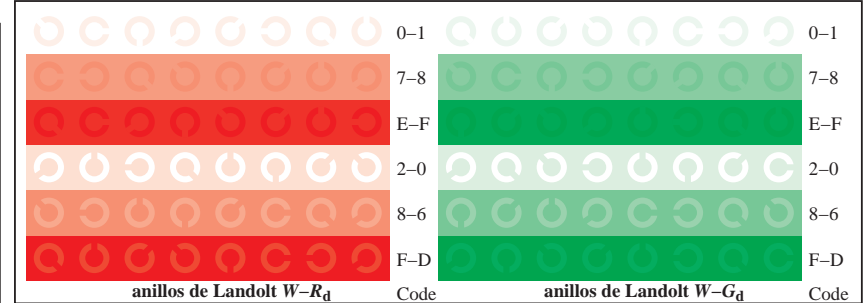
TS851-1, Fig. D4Wd: 16 equidistant pasos  $W-R_d$ ;  $W-G_d$ ;  $W-B_d$ ;  $W-N$ ;  $rgb/cmy0 \rightarrow rgb_d$  setrgbcolor



TS851-3, Fig. D5Wd: código y Landolt anillos  $N$ ;  $R_d$ ;  $G_d$ ;  $B_d$ ;  $Z$ ; PS operator  $rgb \rightarrow rgb_d$  setrgbcolor



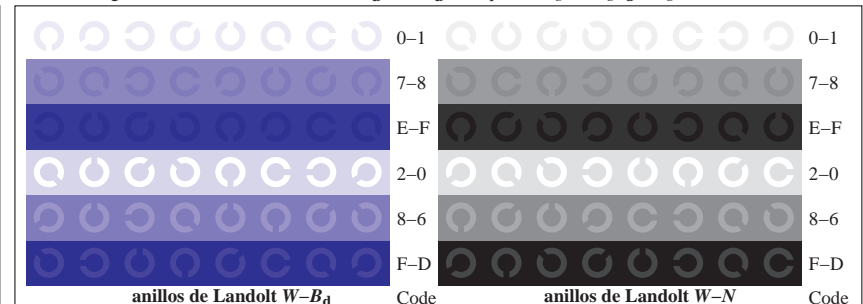
TS850-5, Fig. D2Wd: rejillas radial  $W-R_d$ ;  $W-G_d$ ;  $W-B_d$ ;  $W-N$ ; PS operator  $rgb \rightarrow rgb_d$  setrgbcolor



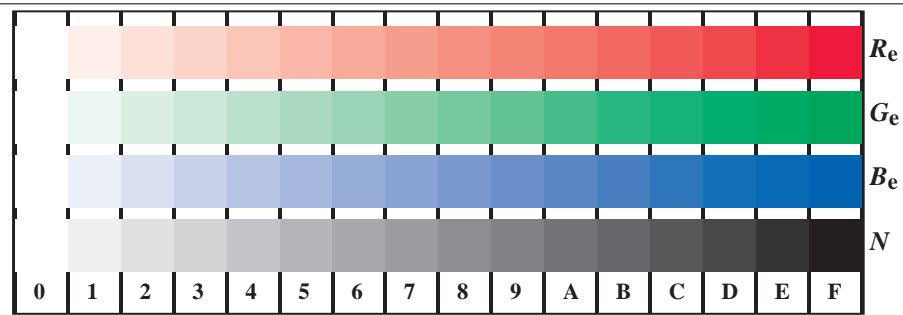
TS851-5, Fig. D6Wd: anillos de Landolt  $W-R_d$ ;  $W-G_d$ ; PS operator  $rgb \rightarrow rgb_d$  setrgbcolor



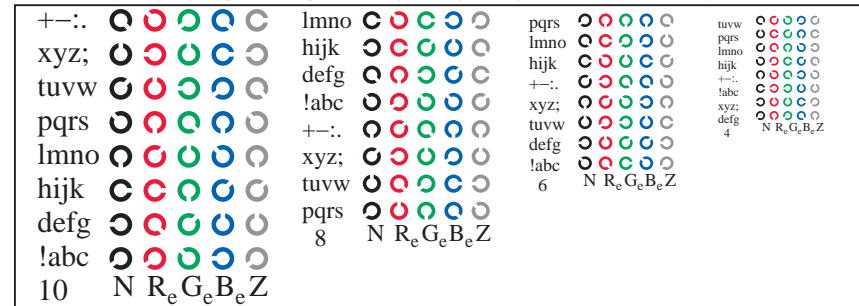
TS850-7, Fig. D3Wd: CIE 14 colores del test y 2 + 16 pasos de gris (sf);  $rgb/cmy0 \rightarrow rgb_d$  setrgbcolor



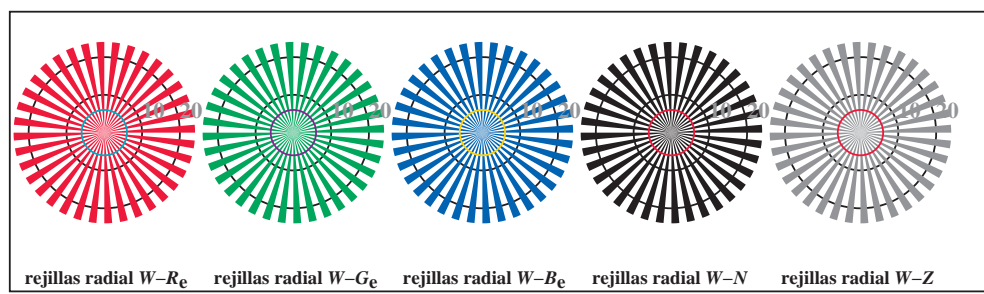
TS851-7, Fig. D7Wd: anillos de Landolt  $W-B_d$ ;  $W-N$ ; PS operator  $rgb \rightarrow rgb_d$  setrgbcolor



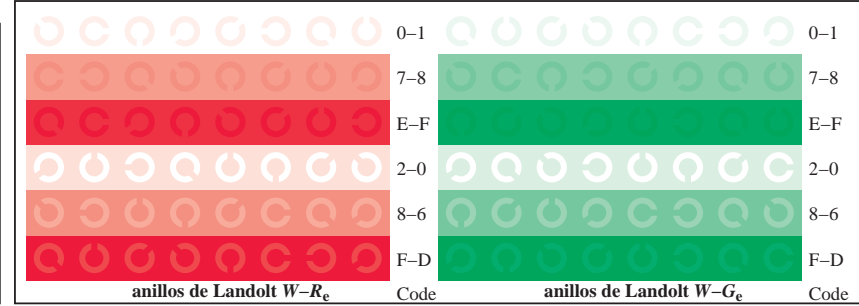
TS851-1, Fig. D4We: 16 equidistante pasos  $W-R_e$ ;  $W-G_e$ ;  $W-B_e$ ;  $W-N$ ;  $rgb/cmy0 \rightarrow rgb_e$  *setrgbcolor*



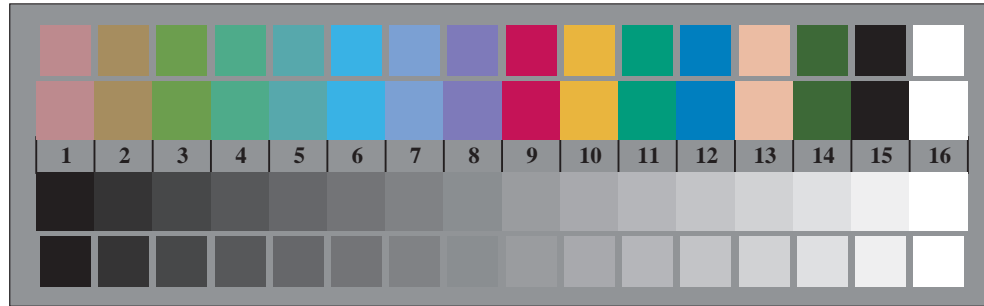
TS851-3, Fig. D5We: código y Landolt anillos  $N$ ;  $R_e$ ;  $G_e$ ;  $B_e$ ;  $Z$ ; *PS operator rgb \rightarrow rgb\_e* *setrgbcolor*



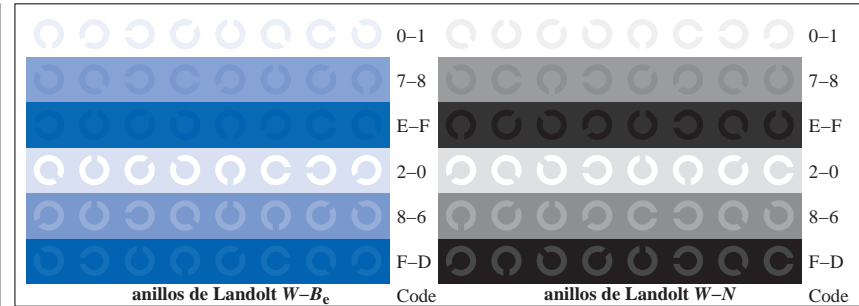
TS850-5, Fig. D2We: rejillas radial  $W-R_e$ ;  $W-G_e$ ;  $W-B_e$ ;  $W-N$ ; *PS operator rgb \rightarrow rgb\_e* *setrgbcolor*



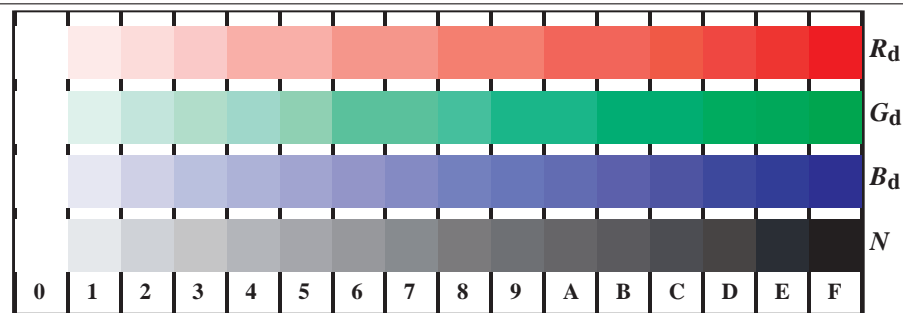
TS851-5, Fig. D6We: anillos de Landolt  $W-R_e$ ;  $W-G_e$ ; *PS operator rgb \rightarrow rgb\_e* *setrgbcolor*



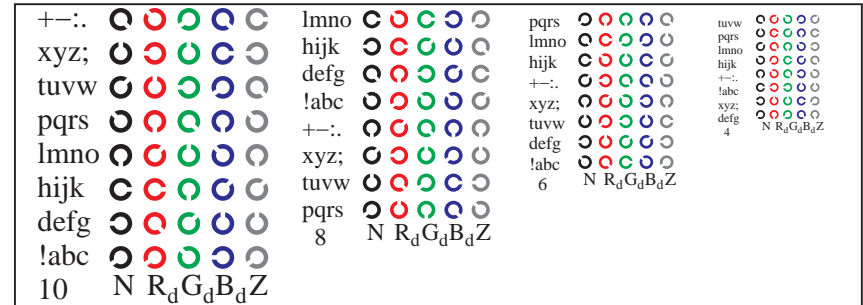
TS850-7, Fig. D3We: CIE 14 colores del test y 2 + 16 pasos de gris (sf);  $rgb/cmy0 \rightarrow rgb_e$  *setrgbcolor*



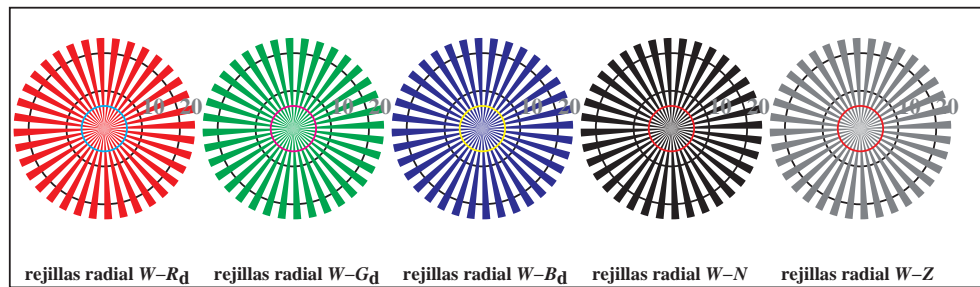
TS851-7, Fig. D7We: anillos de Landolt  $W-B_e$ ;  $W-N$ ; *PS operator rgb \rightarrow rgb\_e* *setrgbcolor*



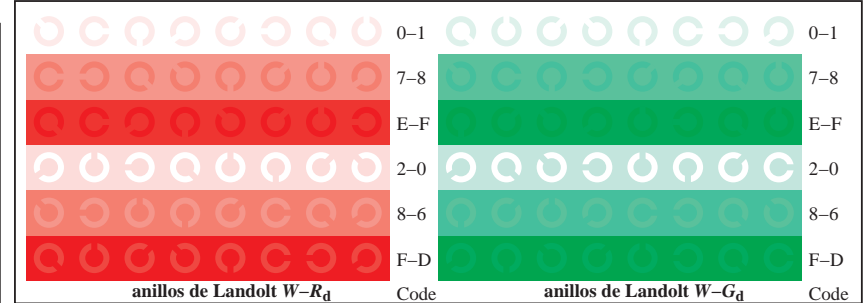
TS851-1, Fig. D4Wdd: 16 equidistante pasos  $W-R_d$ ;  $W-G_d$ ;  $W-B_d$ ;  $W-N$ ;  $rgb/cmy0 \rightarrow rgb_{dd}$  setrgbcolor



TS851-3, Fig. D5Wdd: código y Landolt anillos  $N$ ;  $R_d$ ;  $G_d$ ;  $B_d$ ;  $Z$ ; PS operator  $rgb \rightarrow rgb_{dd}$  setrgbcolor



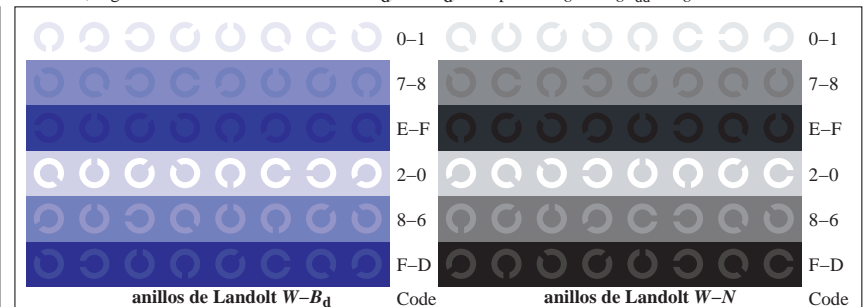
TS850-5, Fig. D2Wdd: rejillas radial  $W-R_d$ ;  $W-G_d$ ;  $W-B_d$ ;  $W-N$ ; PS operator  $rgb \rightarrow rgb_{dd}$  setrgbcolor



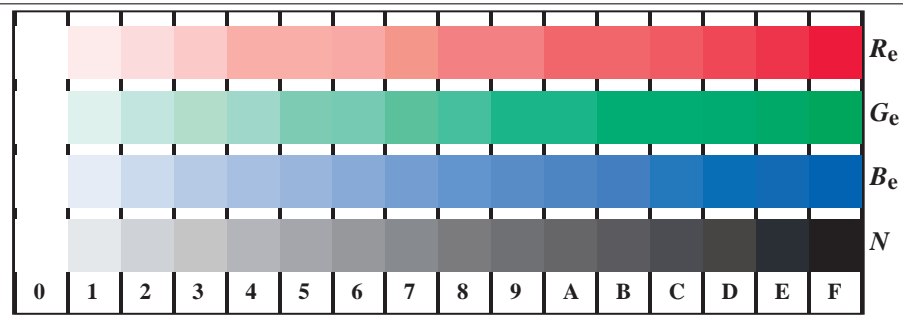
TS851-5, Fig. D6Wdd: anillos de Landolt  $W-R_d$ ;  $W-G_d$ ; PS operator  $rgb \rightarrow rgb_{dd}$  setrgbcolor



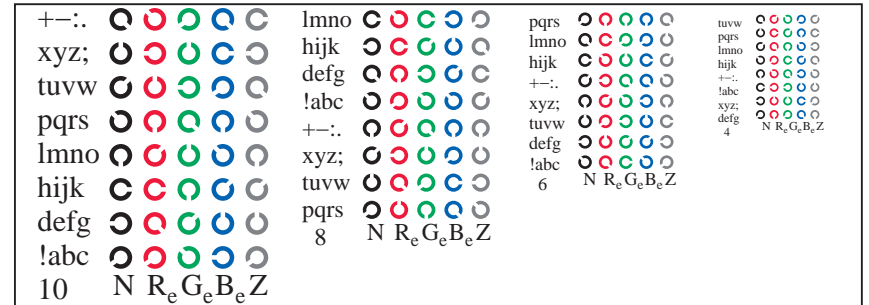
TS850-7, Fig. D3Wdd: CIE 14 colores del test y 2 + 16 pasos de gris (sf);  $rgb/cmy0 \rightarrow rgb_{dd}$  setrgbcolor



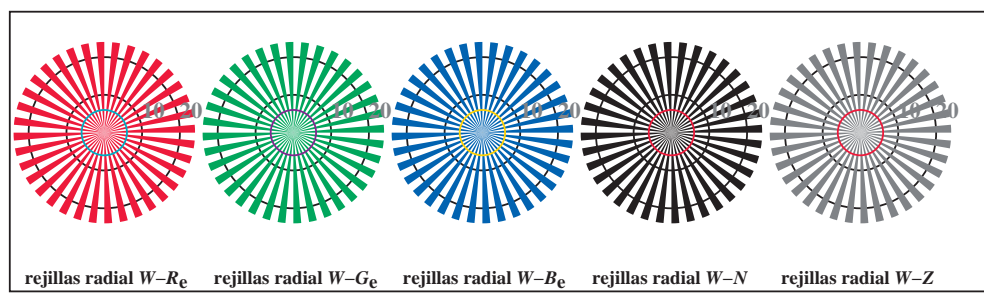
TS851-7, Fig. D7Wdd: anillos de Landolt  $W-B_d$ ;  $W-N$ ; PS operator  $rgb \rightarrow rgb_{dd}$  setrgbcolor



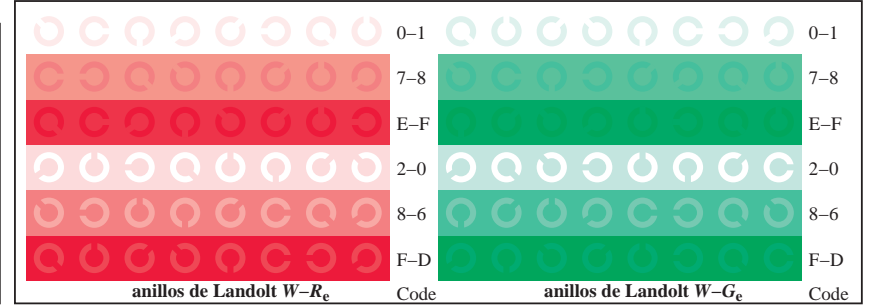
TS851-1, Fig. D4Wde: 16 equidistante pasos  $W-R_e$ ;  $W-G_e$ ;  $W-B_e$ ;  $W-N$ ;  $rgb/cmy0 \rightarrow rgb_{de}$  setrgbcolor



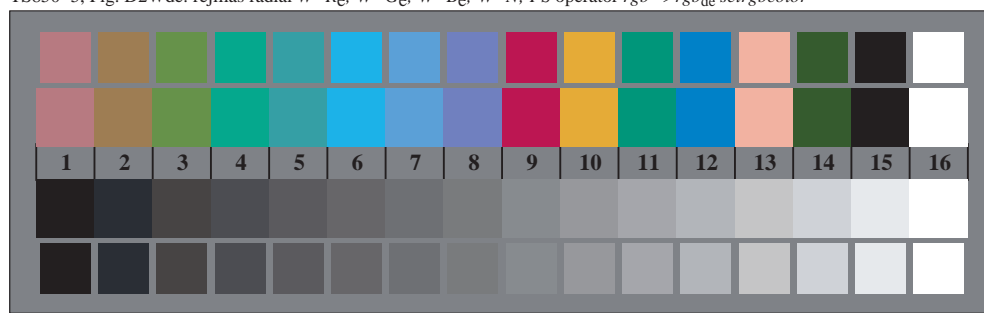
TS851-3, Fig. D5Wde: codigo y Landolt anillos  $N$ ;  $R_e$ ;  $G_e$ ;  $B_e$ ;  $Z$ ; PS operator  $rgb \rightarrow rgb_{de}$  setrgbcolor



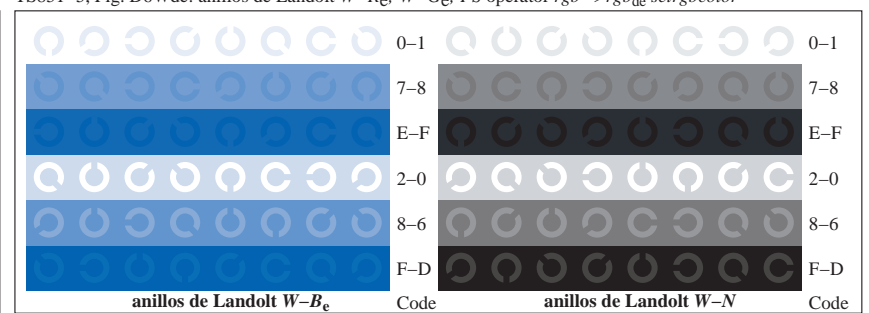
TS850-5, Fig. D2Wde: rejillas radial  $W-R_e$ ;  $W-G_e$ ;  $W-B_e$ ;  $W-N$ ; PS operator  $rgb \rightarrow rgb_{de}$  setrgbcolor



TS851-5, Fig. D6Wde: anillos de Landolt  $W-R_e$ ;  $W-G_e$ ; PS operator  $rgb \rightarrow rgb_{de}$  setrgbcolor



TS850-7, Fig. D3Wde: CIE 14 colores del test y 2 + 16 pasos de gris (sf);  $rgb/cmy0 \rightarrow rgb_{de}$  setrgbcolor



TS851-7, Fig. D7Wde: anillos de Landolt  $W-B_e$ ;  $W-N$ ; PS operator  $rgb \rightarrow rgb_{de}$  setrgbcolor