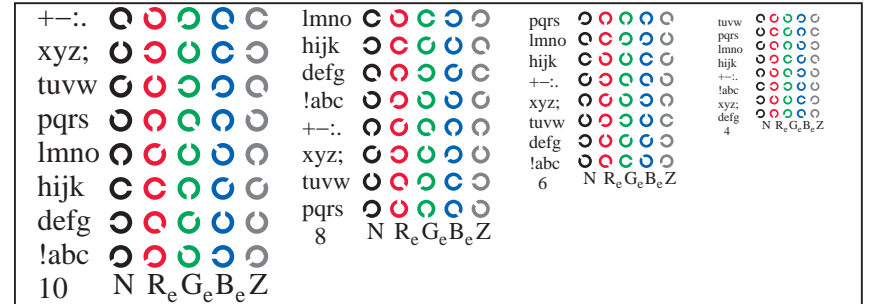
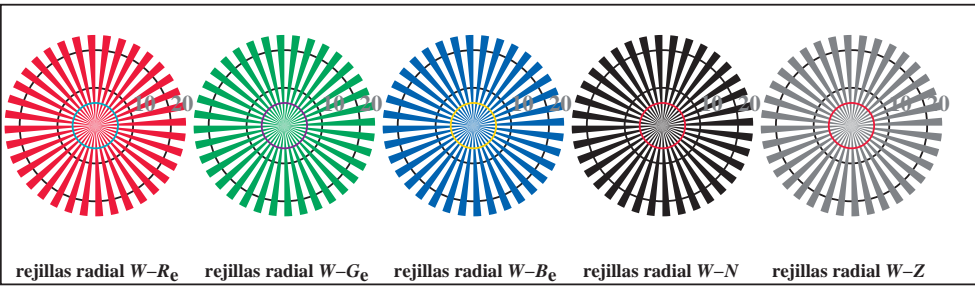


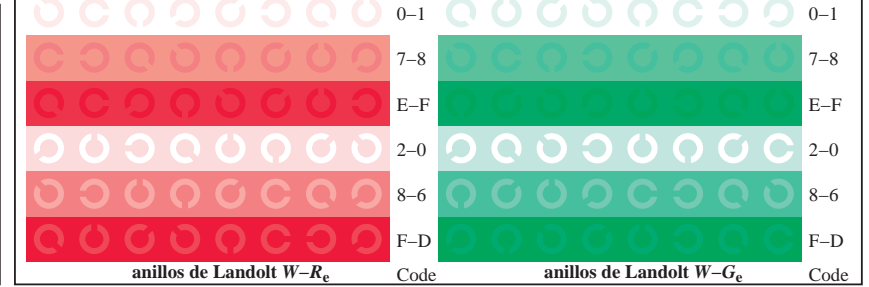
TS851-1, Fig. D4Wde: 16 equidistante pasos $W-R_e$; $W-G_e$; $W-B_e$; $W-N$; $rgb/cmy0 \rightarrow rgb_{de}$ setrgbcolor



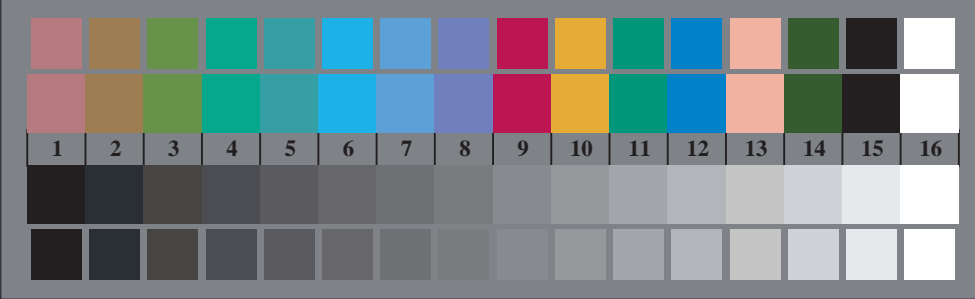
TS851-3, Fig. D5Wde: codigo y Landolt anillos N ; R_e ; G_e ; B_e ; Z ; PS operator $rgb \rightarrow rgb_{de}$ setrgbcolor



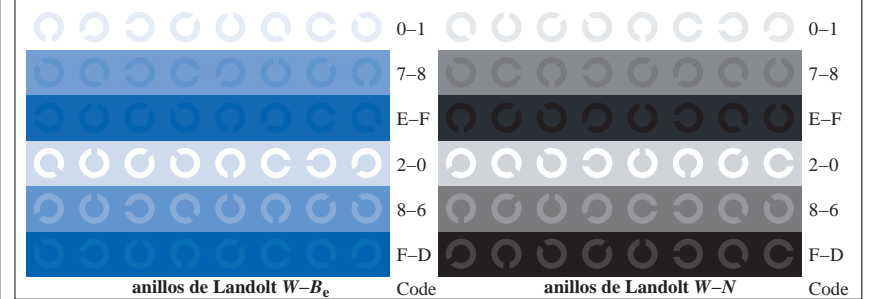
TS850-5, Fig. D2Wde: rejillas radial $W-R_e$; $W-G_e$; $W-B_e$; $W-N$; PS operator $rgb \rightarrow rgb_{de}$ setrgbcolor



TS851-5, Fig. D6Wde: anillos de Landolt $W-R_e$; $W-G_e$; PS operator $rgb \rightarrow rgb_{de}$ setrgbcolor



TS850-7, Fig. D3Wde: CIE 14 colores del test y 2 + 16 pasos de gris (sf); $rgb/cmy0 \rightarrow rgb_{de}$ setrgbcolor



TS851-7, Fig. D7Wde: anillos de Landolt $W-B_e$; $W-N$; PS operator $rgb \rightarrow rgb_{de}$ setrgbcolor