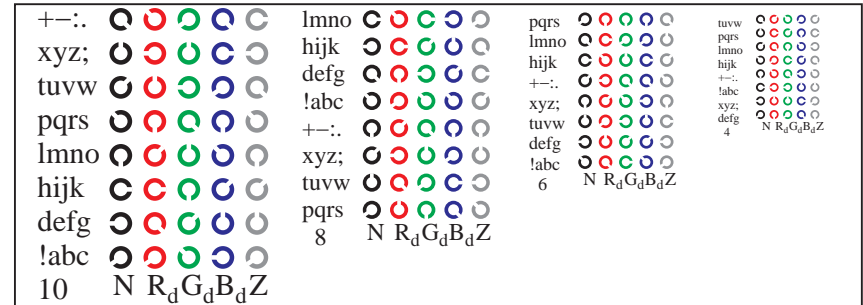
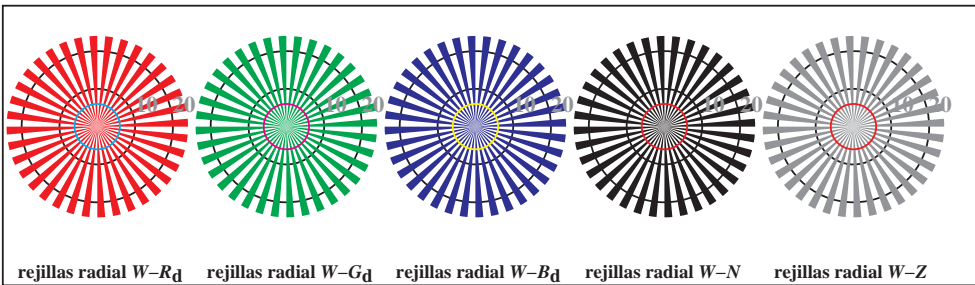


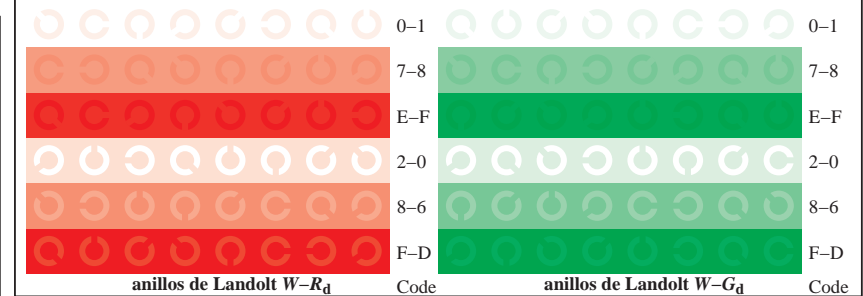
TS851-1, Fig. D4Wd: 16 equidistant pasos  $W-R_d$ ;  $W-G_d$ ;  $W-B_d$ ;  $W-N$ ;  $rgb/cmy0 \rightarrow rgb_d$  setrgbcolor



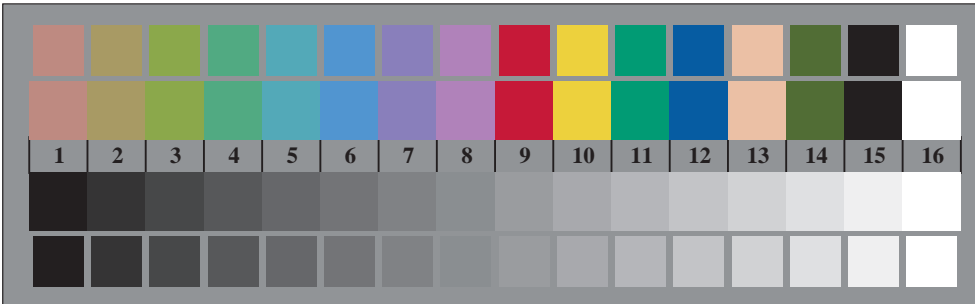
TS851-3, Fig. D5Wd: código y Landolt anillos  $N$ ;  $R_d$ ;  $G_d$ ;  $B_d$ ;  $Z$ ; PS operator  $rgb \rightarrow rgb_d$  setrgbcolor



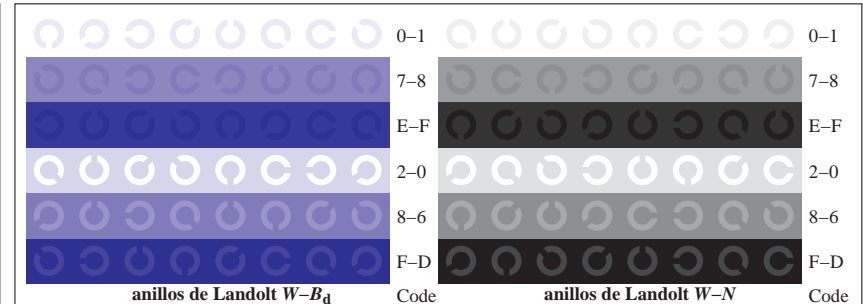
TS850-5, Fig. D2Wd: rejillas radial  $W-R_d$ ;  $W-G_d$ ;  $W-B_d$ ;  $W-N$ ; PS operator  $rgb \rightarrow rgb_d$  setrgbcolor



TS851-5, Fig. D6Wd: anillos de Landolt  $W-R_d$ ;  $W-G_d$ ; PS operator  $rgb \rightarrow rgb_d$  setrgbcolor



TS850-7, Fig. D3Wd: CIE 14 colores del test y 2 + 16 pasos de gris (sf);  $rgb/cmy0 \rightarrow rgb_d$  setrgbcolor



TS851-7, Fig. D7Wd: anillos de Landolt  $W-B_d$ ;  $W-N$ ; PS operator  $rgb \rightarrow rgb_d$  setrgbcolor