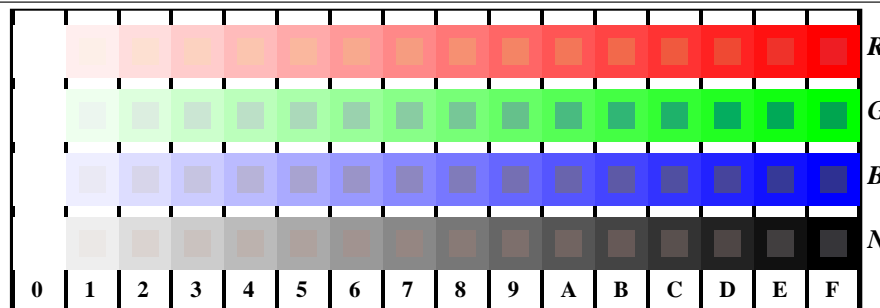


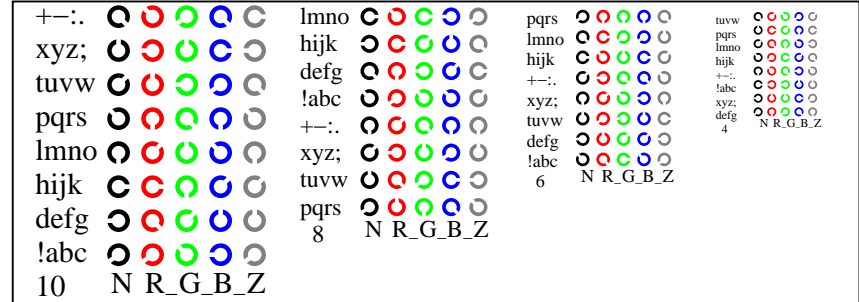
vea archivos semejantes: <http://130.149.60.45/~farbmetrik/TS84/TS84.HTM>
información técnica: <http://www.ps.bam.de> o <http://130.149.60.45/~farbmetrik>

TUB matrícula: 20150701-TS84/TS84L0NP.PDF /PS
aplicación para la medida salida en la impresión offset

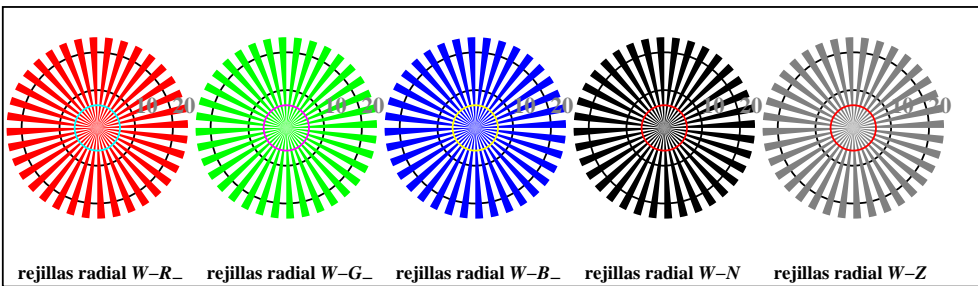
TUB material: code=rh4ta



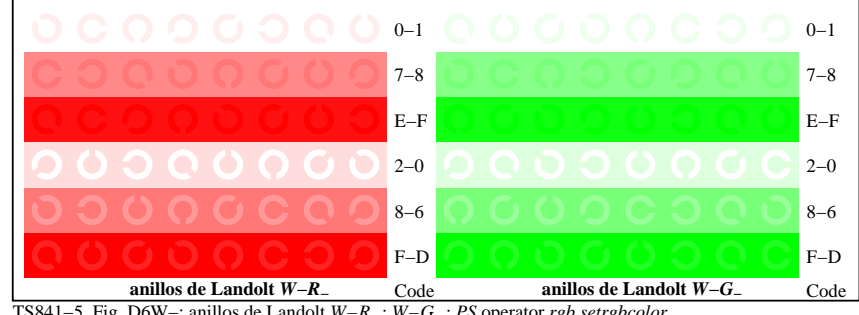
TS841-1, Fig. D4W-: 16 equidistante pasos W-R_; W-G_; W-B_; W-N; rgb/cmy0 set(rgb/cmyk)color



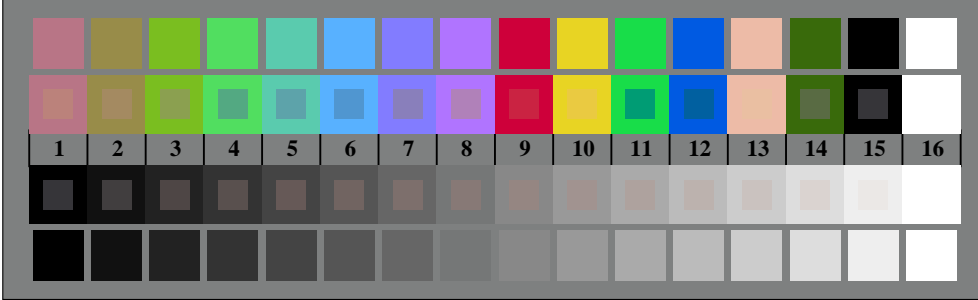
TS841-3, Fig. D5W-: codigo y Landolt anillos N; R_; G_; B_; Z; PS operator rgb->rgb_setrgbcolor



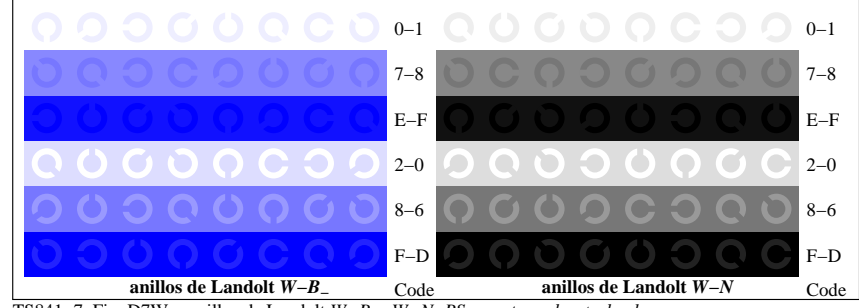
TS840-5, Fig. D2W-: rejillas radial W-R_; W-G_; W-B_; W-N; PS operator rgb->rgb_setrgbcolor



TS841-5, Fig. D6W-: anillos de Landolt W-R_; W-G_; PS operator rgb_setrgbcolor



TS840-7, Fig. D3W-: CIE 14 colores del test y 2 + 16 pasos de gris (sf); rgb/cmy0 set(rgb/cmyk)color



TS841-7, Fig. D7W-: anillos de Landolt W-B_; W-N; PS operator rgb_setrgbcolor



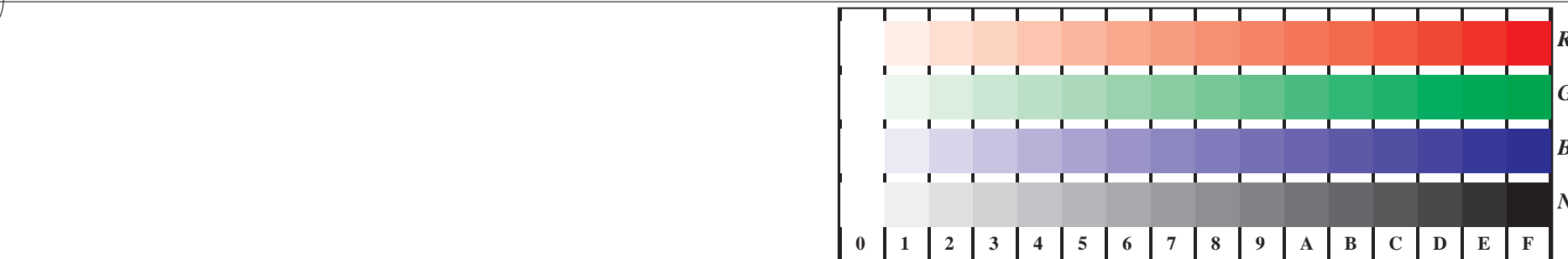
gráfico TS84; 4(ISO/IEC 15775 + ISO/IEC TR 24705)
test cromático gráfico RGB

entrada: rgb/cmyk -> w/rgb/cmyk_
salida: ningún cambio

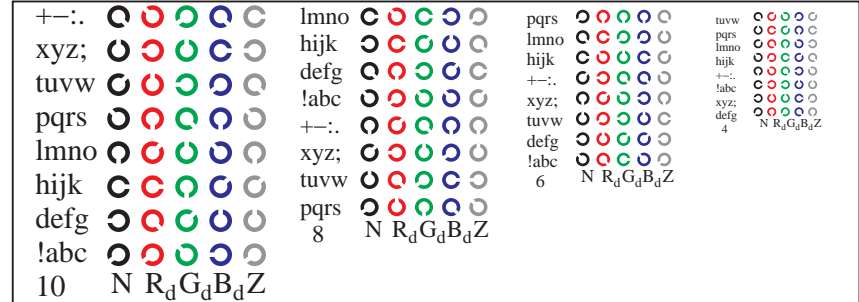


vea archivos semejantes: http://130.149.60.45/~farbmetrik/TS84/TS84.HTM
información técnica: http://www.ps.bam.de o http://130.149.60.45/~farbmetrik

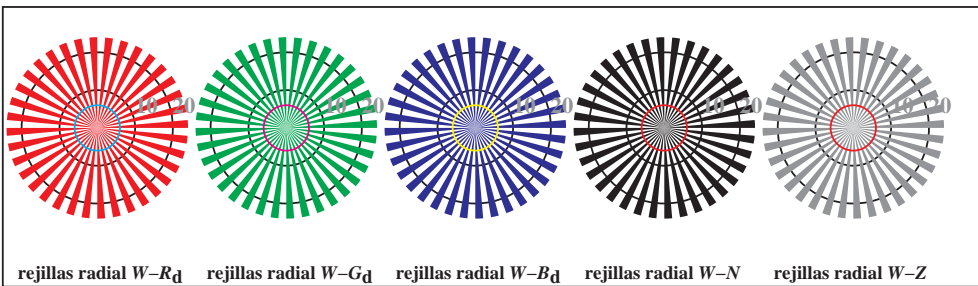
TUB matrícula: 20150701-TS84/TS84L0NP.PDF /PS
aplicación para la medida salida en la impresión offset, separacióncmykn6 (CMYK)
TUB material: code=rh4tra



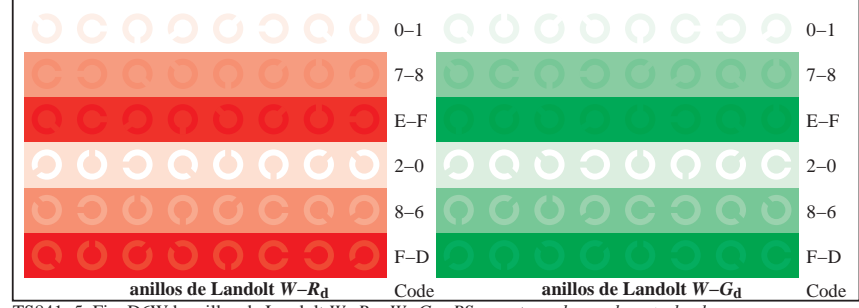
TS841-1, Fig. D4Wd: 16 equidistante pasos W-R_d; W-G_d; W-B_d; W-N; rgb/cmy0->rgb_d setrgbcolor



TS841-3, Fig. D5Wd: codigo y Landolt anillosN; R_d; G_d; B_d; Z; PS operator rgb->rgb_d setrgbcolor



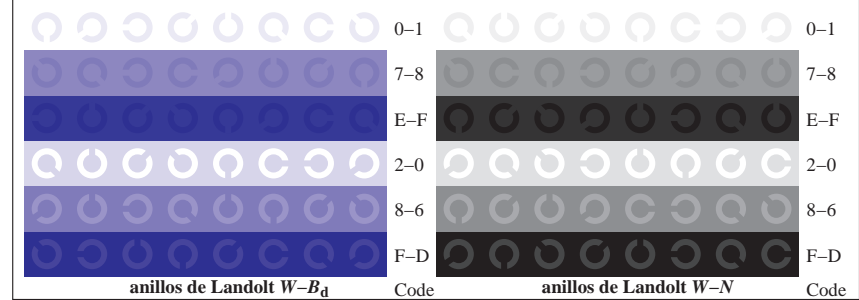
TS840-5, Fig. D2Wd: rejillas radial W-R_d; W-G_d; W-B_d; W-N; PS operator rgb->rgb_d setrgbcolor



TS841-5, Fig. D6Wd: anillos de Landolt W-R_d; W-G_d; PS operator rgb->rgb_d setrgbcolor



TS840-7, Fig. D3Wd: CIE 14 colores del test y 2 + 16 pasos de gris (sf); rgb/cmy0->rgb_d setrgbcolor



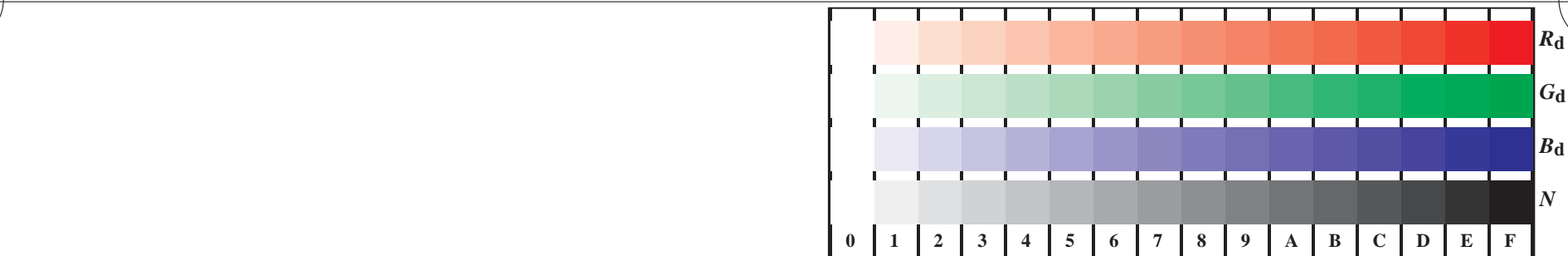
TS841-7, Fig. D7Wd: anillos de Landolt W-B_d; W-N; PS operator rgb->rgb_d setrgbcolor

gráfico TS84; 4(ISO/IEC 15775 + ISO/IEC TR 24705)
test cromático gráfico RGB, 3D=0, de=0, cmyk

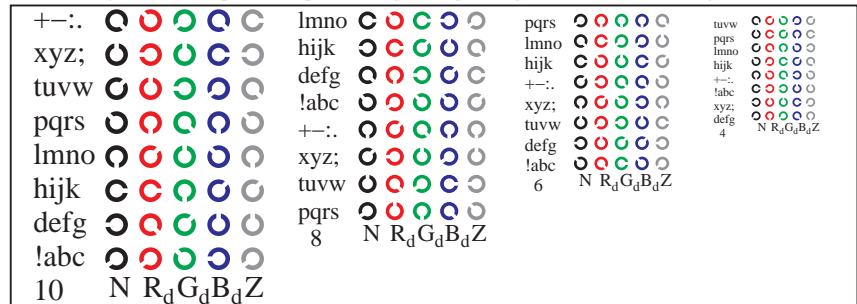
entrada: rgb/cmyk -> rgb_d
salida: transfiera a cmyk_d

vea archivos semejantes: <http://130.149.60.45/~farbmetrik/TS84/TS84.HTM>
información técnica: <http://www.ps.bam.de> o <http://130.149.60.45/~farbmetrik>

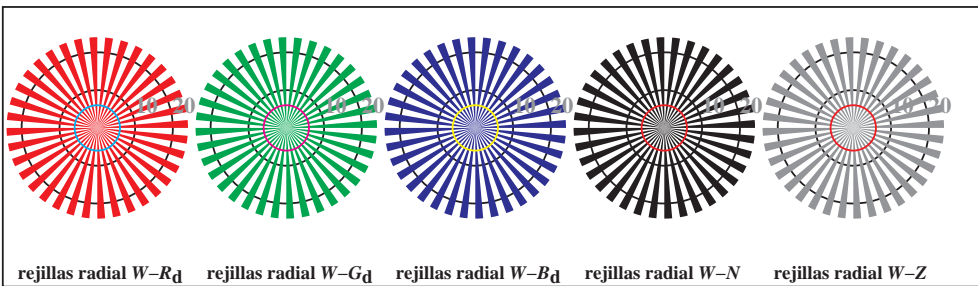
TUB matrícula: 20150701-TS84/TS84L0NP.PDF /PS
aplicación para la medida salida en la impresión offset, separacióncmyk6 (CMYK)
TUB material: code=rh4ta



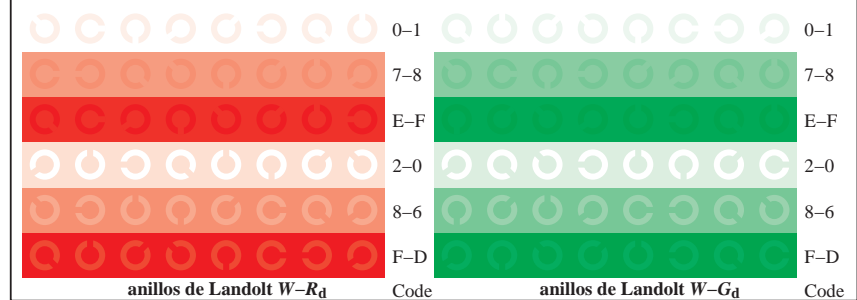
TS841-1, Fig. D4Wd: 16 equidistante pasos $W-R_d$; $W-G_d$; $W-B_d$; $W-N$; $rgb/cmy0 \rightarrow rgb_d$ setrgbcolor



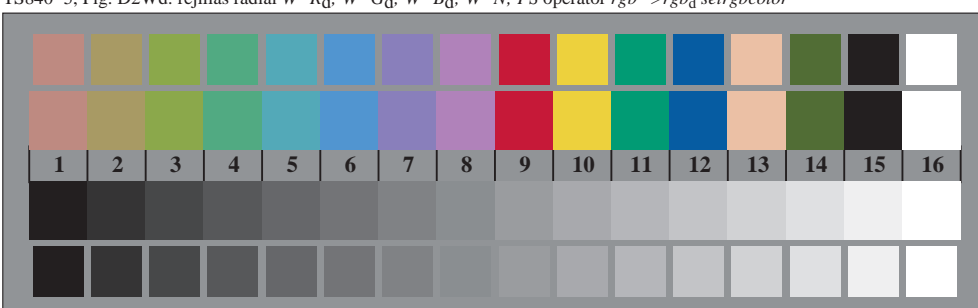
TS841-3, Fig. D5Wd: código y Landolt anillos N ; R_d ; G_d ; B_d ; Z ; PS operator $rgb \rightarrow rgb_d$ setrgbcolor



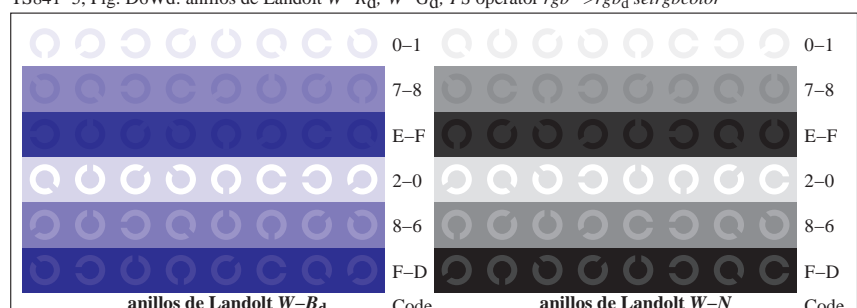
TS840-5, Fig. D2Wd: rejillas radial $W-R_d$; $W-G_d$; $W-B_d$; $W-N$; PS operator $rgb \rightarrow rgb_d$ setrgbcolor



TS841-5, Fig. D6Wd: anillos de Landolt $W-R_d$; $W-G_d$; PS operator $rgb \rightarrow rgb_d$ setrgbcolor



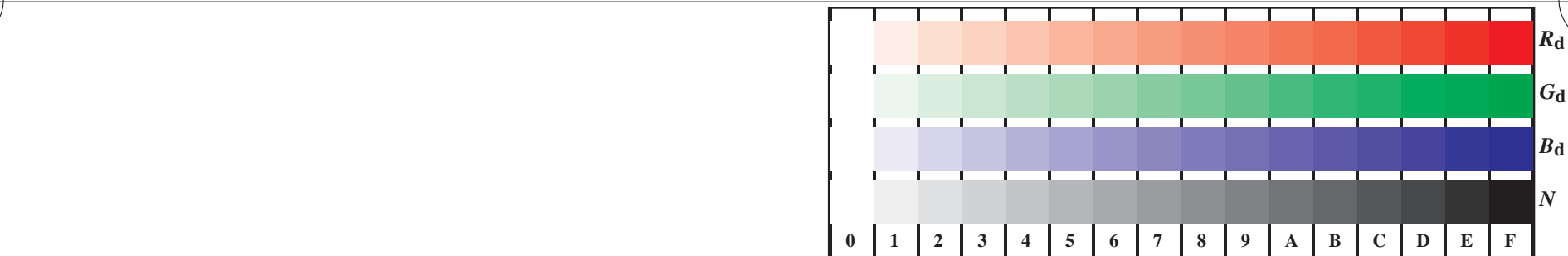
TS840-7, Fig. D3Wd: CIE 14 colores del test y 2 + 16 pasos de gris (sf); $rgb/cmy0 \rightarrow rgb_d$ setrgbcolor



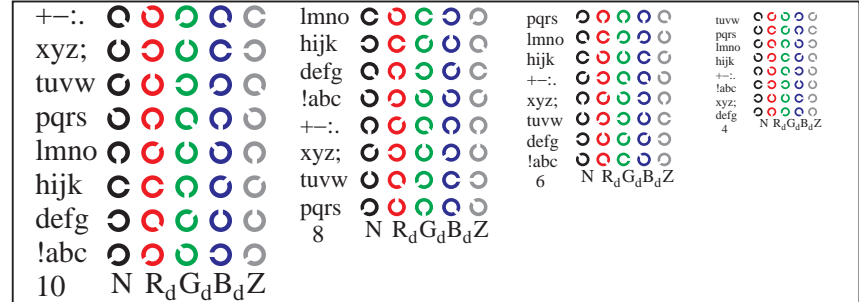
TS841-7, Fig. D7Wd: anillos de Landolt $W-B_d$; $W-N$; PS operator $rgb \rightarrow rgb_d$ setrgbcolor

vea archivos semejantes: <http://130.149.60.45/~farbmetrik/TS84/TS84.HTM>
 información técnica: <http://www.ps.bam.de> o <http://130.149.60.45/~farbmetrik>

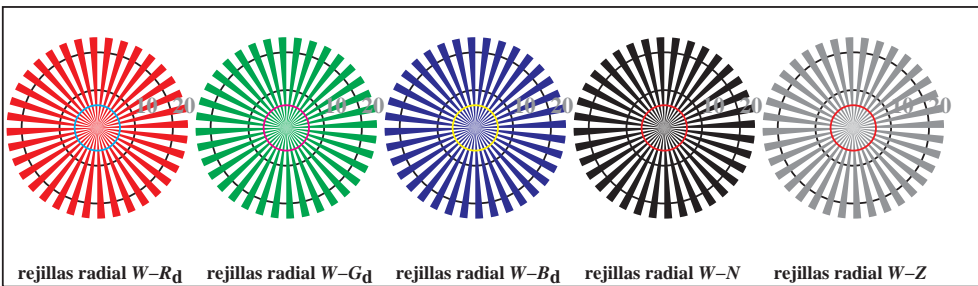
TUB matrícula: 20150701-TS84/TS84L0NP.PDF /PS
 aplicación para la medida salida en la impresión offset, separacióncmyk6 (CMYK)
 TUB material: code=rh4ta



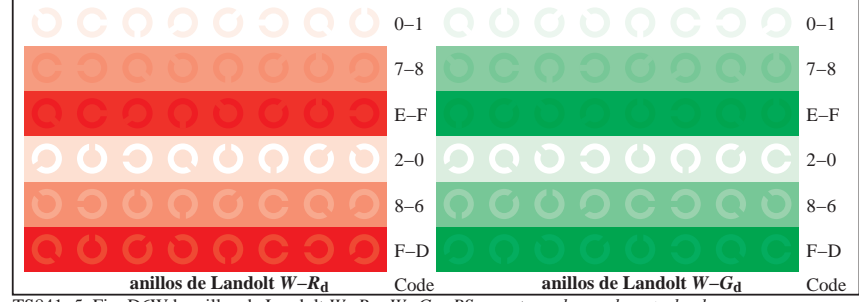
TS841-1, Fig. D4Wd: 16 equidistante pasos $W-R_d$; $W-G_d$; $W-B_d$; $W-N$; $rgb/cmy0 \rightarrow rgb_d$ setrgbcolor



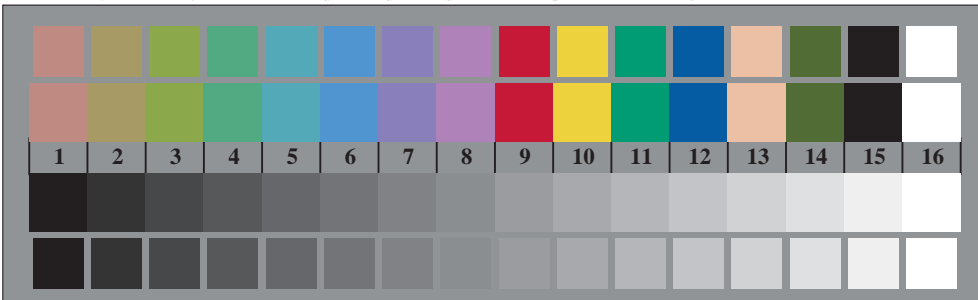
TS841-3, Fig. D5Wd: código y Landolt anillos N ; R_d ; G_d ; B_d ; Z ; PS operator $rgb \rightarrow rgb_d$ setrgbcolor



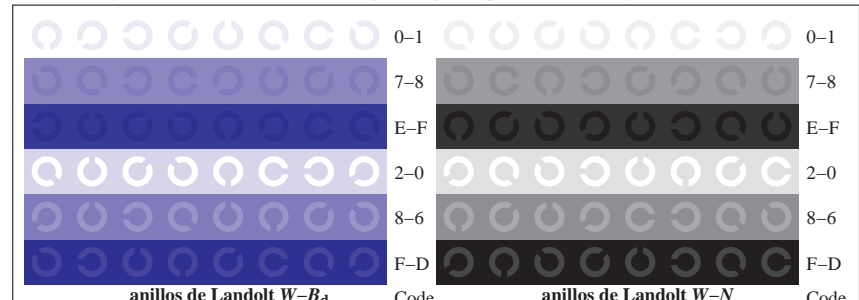
TS840-5, Fig. D2Wd: rejillas radial $W-R_d$; $W-G_d$; $W-B_d$; $W-N$; PS operator $rgb \rightarrow rgb_d$ setrgbcolor



TS841-5, Fig. D6Wd: anillos de Landolt $W-R_d$; $W-G_d$; PS operator $rgb \rightarrow rgb_d$ setrgbcolor



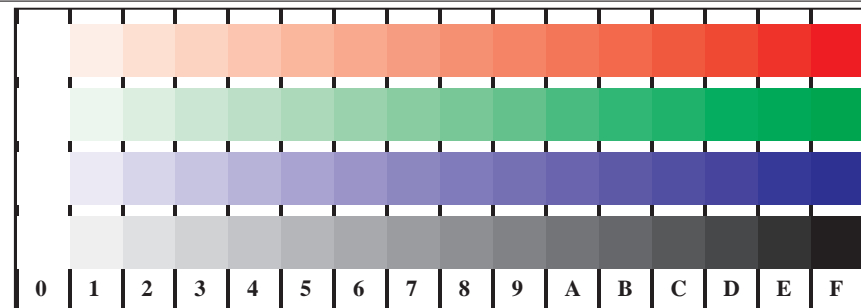
TS840-7, Fig. D3Wd: CIE 14 colores del test y 2 + 16 pasos de gris (sf); $rgb/cmy0 \rightarrow rgb_d$ setrgbcolor



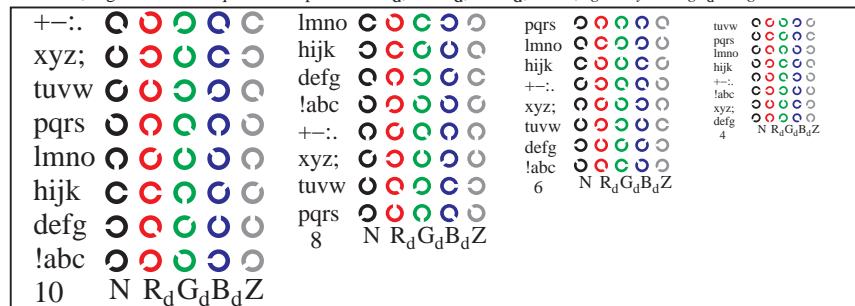
TS841-7, Fig. D7Wd: anillos de Landolt $W-B_d$; $W-N$; PS operator $rgb \rightarrow rgb_d$ setrgbcolor

vea archivos semejantes: <http://130.149.60.45/~farbmetrik/TS84/TS84.HTM>
información técnica: <http://www.ps.bam.de> o <http://130.149.60.45/~farbmetrik>

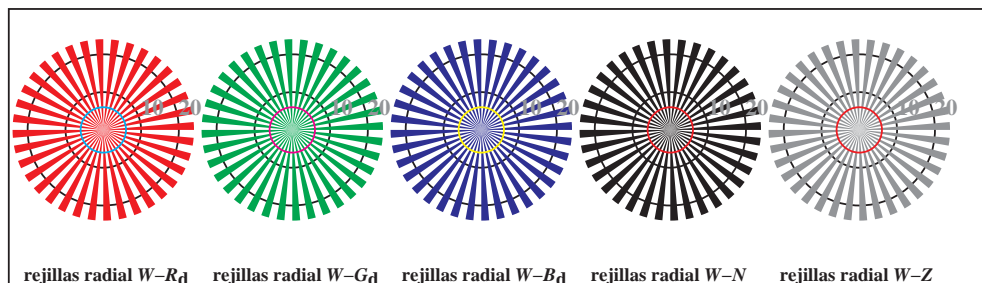
TUB matrícula: 20150701-TS84/TS84L0NP.PDF /PS
aplicación para la medida salida en la impresión offset, separacióncmy6 (CMYK)
TUB material: code=rh4ta



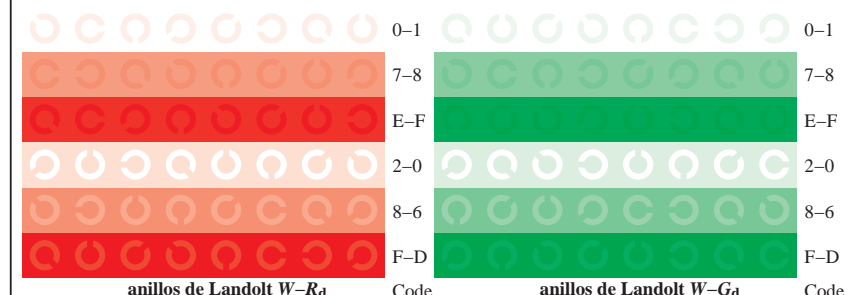
TS841-1, Fig. D4Wd: 16 equidistante pasos W-R_d; W-G_d; W-B_d; W-N; rgb/cmy0->rgb_d setrgbcolor



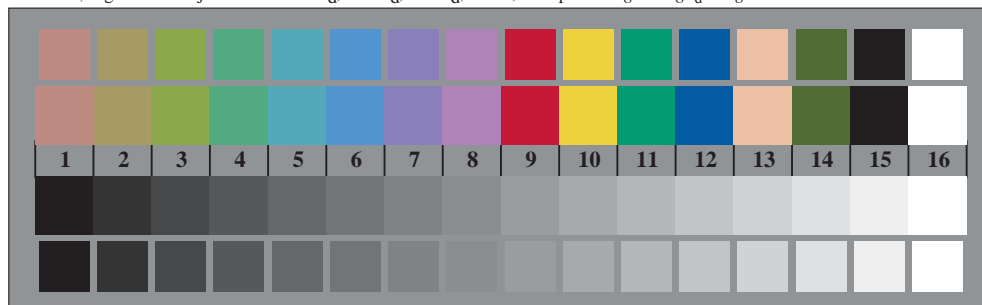
TS841-3, Fig. D5Wd: código y Landolt anillosN; R_d; G_d; B_d; Z; PS operator rgb->rgb_d setrgbcolor



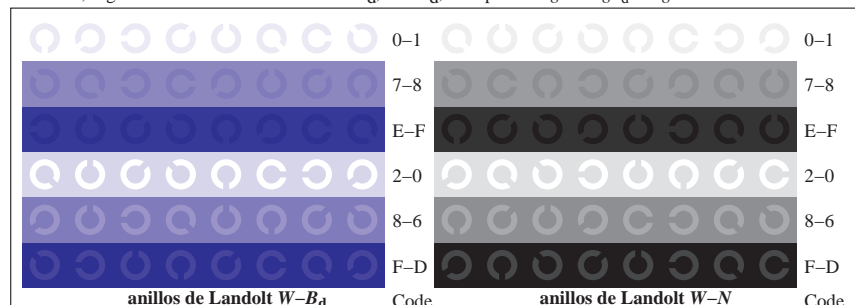
TS840-5, Fig. D2Wd: rejillas radial W-R_d; W-G_d; W-B_d; W-N; PS operator rgb->rgb_d setrgbcolor



TS841-5, Fig. D6Wd: anillos de Landolt W-R_d; W-G_d; PS operator rgb->rgb_d setrgbcolor



TS840-7, Fig. D3Wd: CIE 14 colores del test y 2 + 16 pasos de gris (sf); rgb/cmy0->rgb_d setrgbcolor



TS841-7, Fig. D7Wd: anillos de Landolt W-B_d; W-N; PS operator rgb->rgb_d setrgbcolor



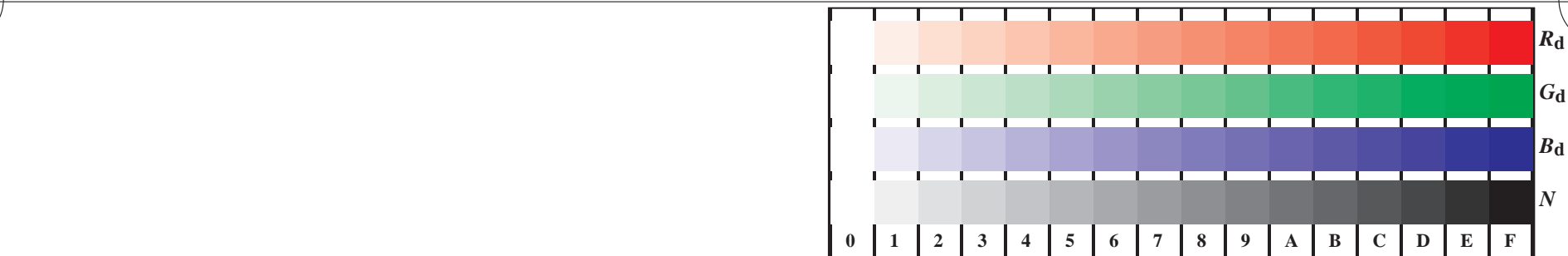
gráfico TS84; 4(ISO/IEC 15775 + ISO/IEC TR 24705)
test cromático gráfico RGB, 3D=0, de=0, cmyk

entrada: rgb/cmyk -> rgb_d
salida: transfiera a cmyk_d

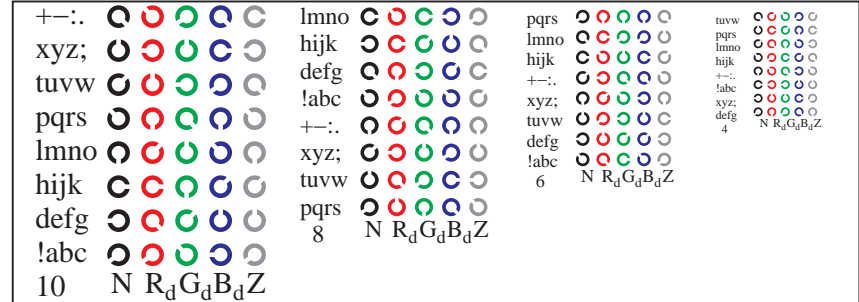


vea archivos semejantes: <http://130.149.60.45/~farbmetrik/TS84/TS84.HTM>
 información técnica: <http://www.ps.bam.de> o <http://130.149.60.45/~farbmetrik>

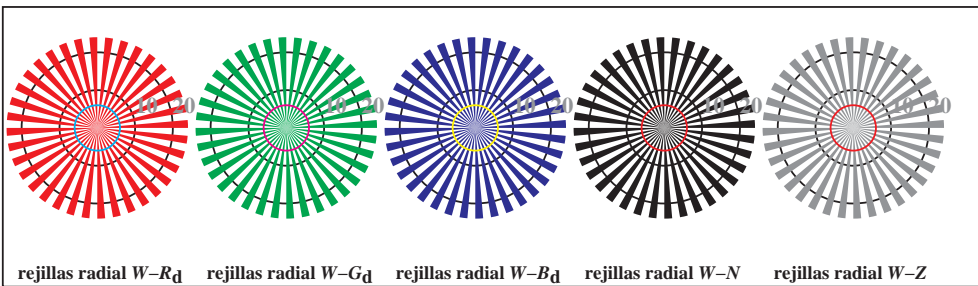
TUB matrícula: 20150701-TS84/TS84L0NP.PDF /PS
 aplicación para la medida salida en la impresión offset, separación cmyk6 (CMYK)
 TUB material: code=rh4ta



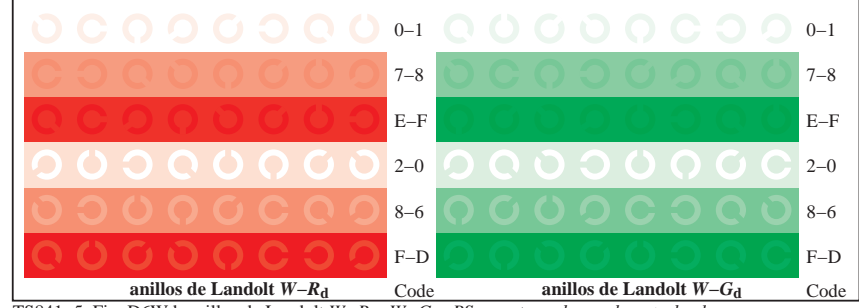
TS841-1, Fig. D4Wd: 16 equidistante pasos $W-R_d$; $W-G_d$; $W-B_d$; $W-N$; $rgb/cmy0 \rightarrow rgb_d$ setrgbcolor



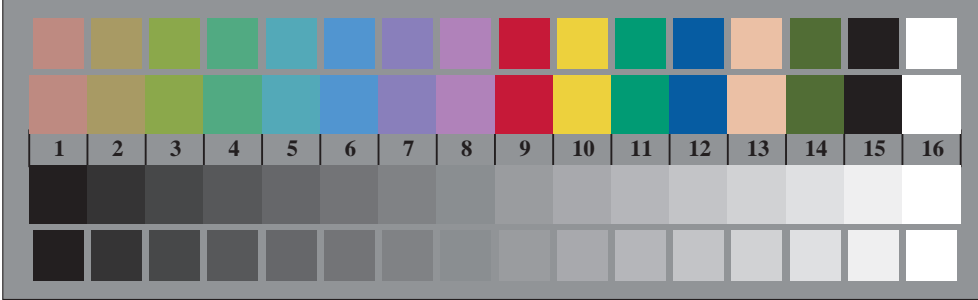
TS841-3, Fig. D5Wd: código y Landolt anillos N ; R_d ; G_d ; B_d ; Z ; PS operator $rgb \rightarrow rgb_d$ setrgbcolor



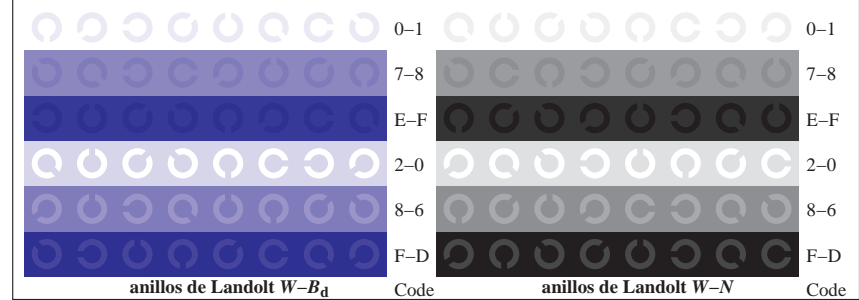
TS840-5, Fig. D2Wd: rejillas radial $W-R_d$; $W-G_d$; $W-B_d$; $W-N$; PS operator $rgb \rightarrow rgb_d$ setrgbcolor



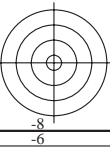
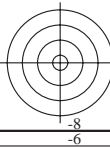
TS841-5, Fig. D6Wd: anillos de Landolt $W-R_d$; $W-G_d$; PS operator $rgb \rightarrow rgb_d$ setrgbcolor

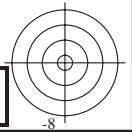
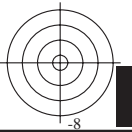
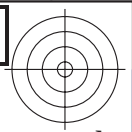
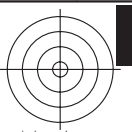


TS840-7, Fig. D3Wd: CIE 14 colores del test y 2 + 16 pasos de gris (sf); $rgb/cmy0 \rightarrow rgb_d$ setrgbcolor



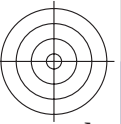
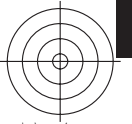
TS841-7, Fig. D7Wd: anillos de Landolt $W-B_d$; $W-N$; PS operator $rgb \rightarrow rgb_d$ setrgbcolor





2-003730-F0

2-003730-F0



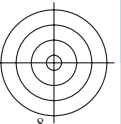
TUB matrícula: 20150701-TS84/TS84L0NP.PDF /.PS TUB material: code=rh4ta
aplicación para la medida salida en la impresión offset, separacióncmykn6 (CMYK)

vea archivos semejantes: <http://130.149.60.45/~farbmetrik/TS84/TS84.HTM>
información técnica: <http://www.ps.bam.de> o <http://130.149.60.45/~farbmetrik>



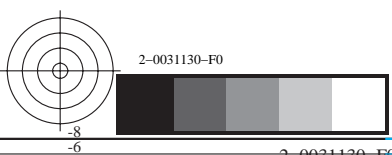
gráfico TS84; 4(ISO/IEC 15775 + ISO/IEC TR 24705)
colores y diferencia en color, ΔE^* , 3D=0, de=0, *cmyk*

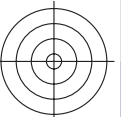
entrada: *rgb/cmyk* -> *rgb*_d
salida: transfiera a *cmyk*_d











TUB matrícula: 20150701-TS84/TS84L0NP.PDF /.PS TUB material: code=rh4ta
aplicación para la medida salida en la impresión offset, separacióncmykn6 (CMYK)

vea archivos semejantes: <http://130.149.60.45/~farbmetrik/TS84/TS84.HTM>
información técnica: <http://www.ps.bam.de> o <http://130.149.60.45/~farbmetrik>

