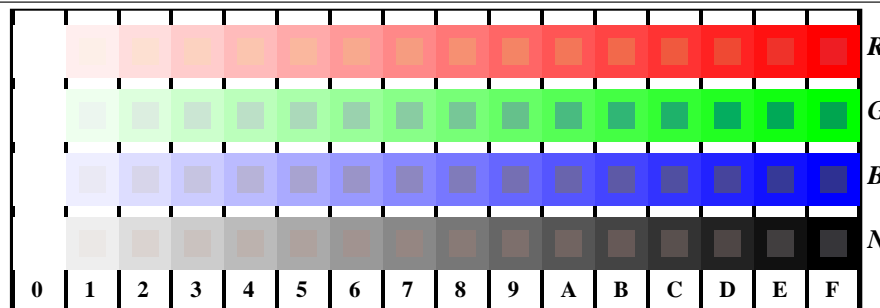


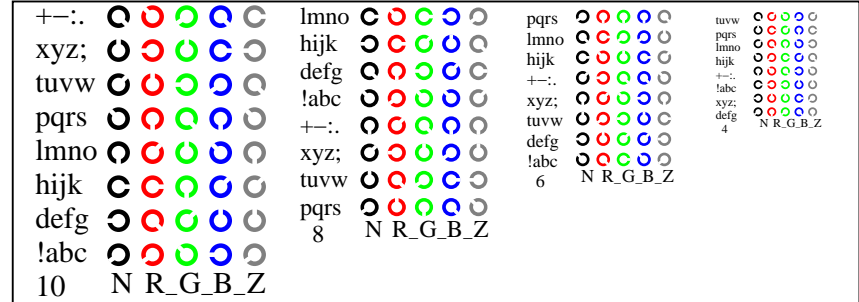
vea archivos semejantes: <http://130.149.60.45/~farbmetrik/TS84/TS84.HTM>
información técnica: <http://www.ps.bam.de> o <http://130.149.60.45/~farbmetrik>

TUB matrícula: 20150701-TS84/TS84LOFA.TXT /PS
aplicación para la medida salida en la impresión offset

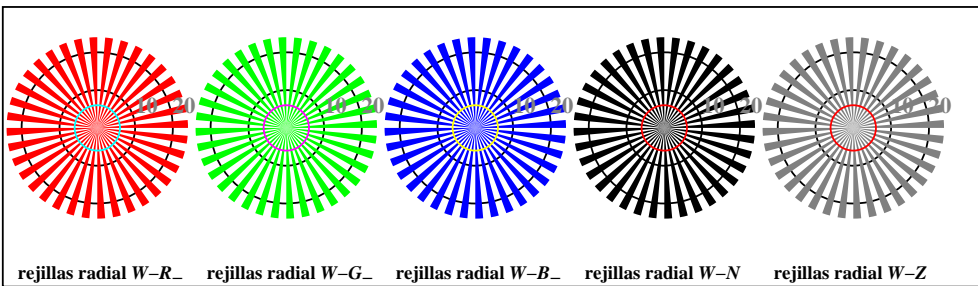
TUB material: code=rh4ta



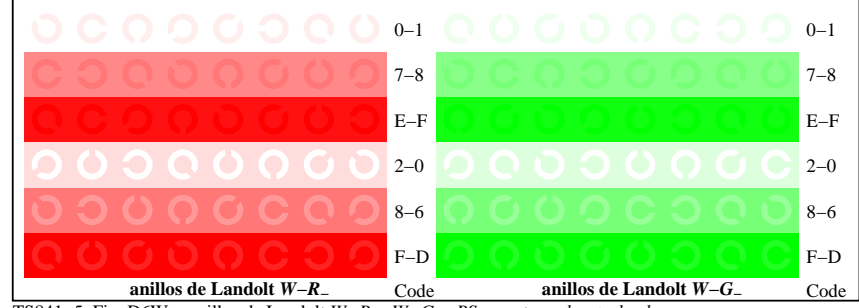
TS841-1, Fig. D4W-: 16 equidistante pasos W-R_; W-G_; W-B_; W-N; rgb/cmy0 set(rgb/cmyk)color



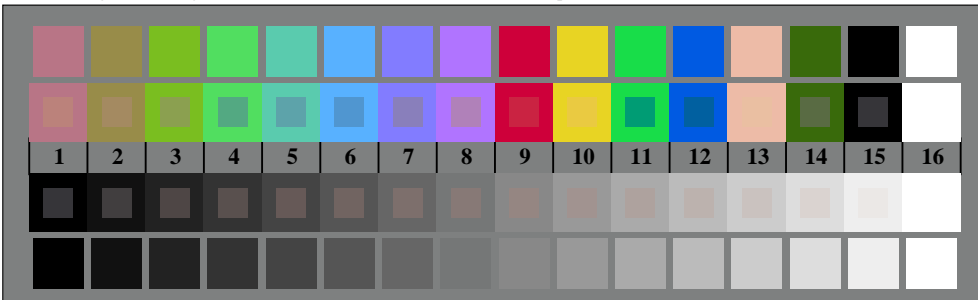
TS841-3, Fig. D5W-: codigo y Landolt anillos N; R_; G_; B_; Z; PS operator rgb->rgb_setrgbcolor



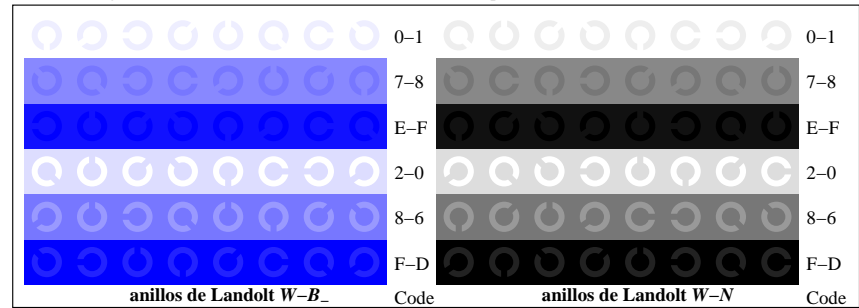
TS840-5, Fig. D2W-: rejillas radial W-R_; W-G_; W-B_; W-N; PS operator rgb->rgb_setrgbcolor



TS841-5, Fig. D6W-: anillos de Landolt W-R_; W-G_; PS operator rgb_setrgbcolor



TS840-7, Fig. D3W-: CIE 14 colores del test y 2 + 16 pasos de gris (sf); rgb/cmy0 set(rgb/cmyk)color



TS841-7, Fig. D7W-: anillos de Landolt W-B_; W-N; PS operator rgb_setrgbcolor



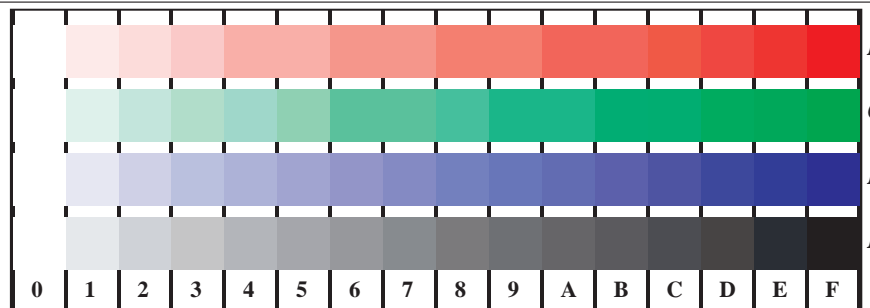
gráfico TS84; 4(ISO/IEC 15775 + ISO/IEC TR 24705)
test cromático gráfico RGB

entrada: rgb/cmyk -> w/rgb/cmyk_
salida: ningún cambio

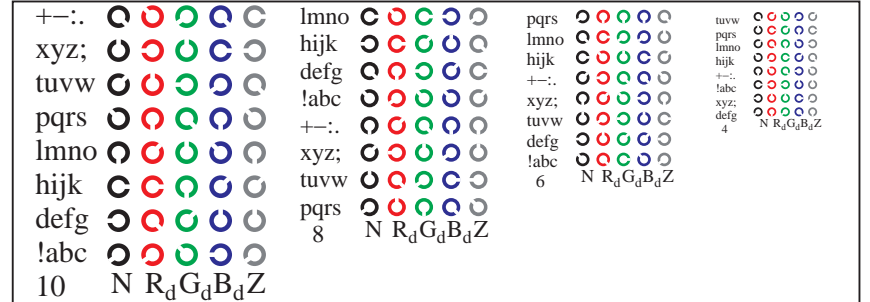


vea archivos semejantes: <http://130.149.60.45/~farbmetrik/TS84/TS84.HTM>
información técnica: <http://www.ps.bam.de> o <http://130.149.60.45/~farbmetrik>

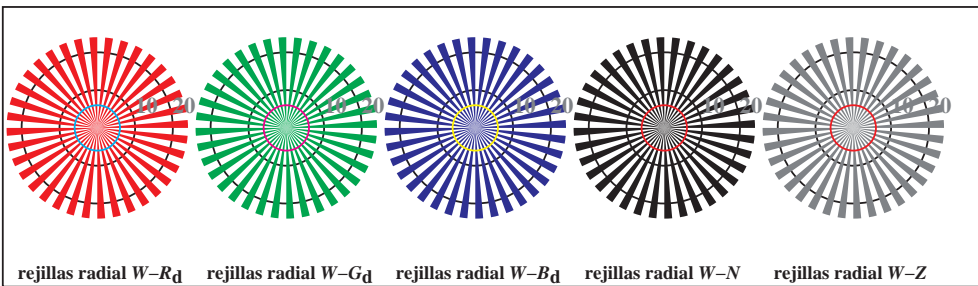
TUB matrícula: 20150701-TS84/TS84L0FA.TXT /.PS
aplicación para la medida salida en la impresión offset, separacióncmyk* (CMYK)
TUB material: code=rh4tra



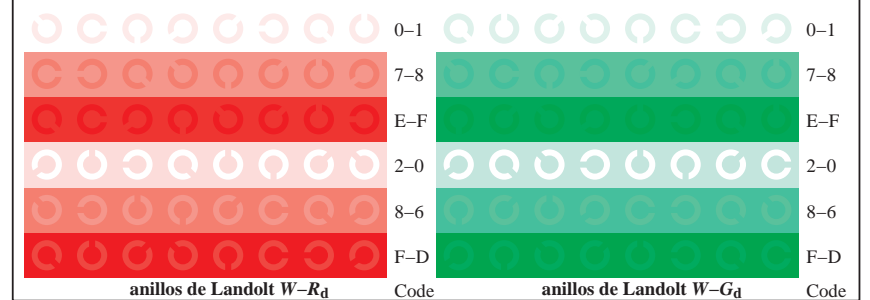
TS841-1, Fig. D4Wdd: 16 equidistante pasos W-R_d; W-G_d; W-B_d; W-N; rgb/cmy0->rgb_{dd} setrgbcolor



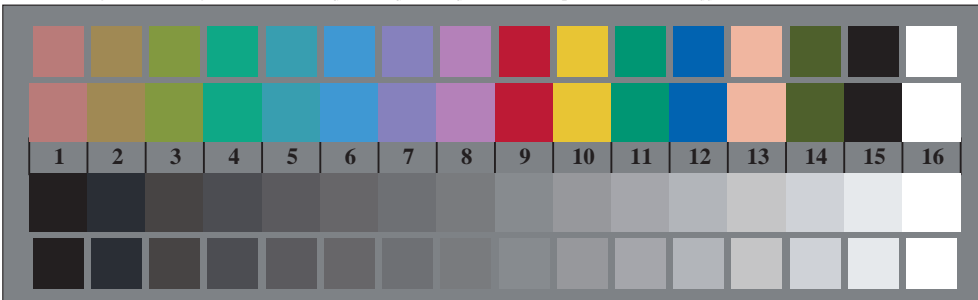
TS841-3, Fig. D5Wdd: codigo y Landolt anillosN; R_d; G_d; B_d; Z; PS operator rgb->rgb_{dd} setrgbcolor



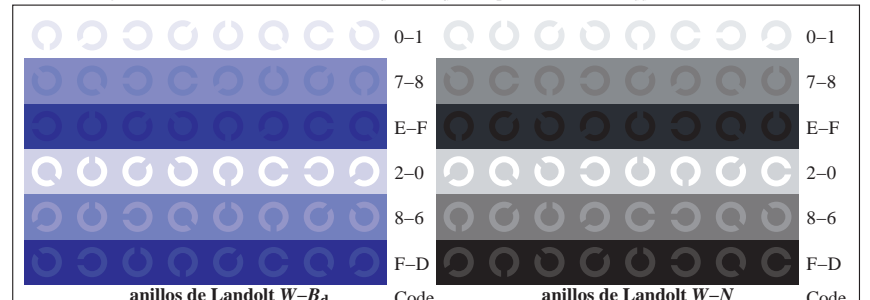
TS840-5, Fig. D2Wdd: rejillas radial W-R_d; W-G_d; W-B_d; W-N; PS operator rgb->rgb_{dd} setrgbcolor



TS841-5, Fig. D6Wdd: anillos de Landolt W-R_d; W-G_d; PS operator rgb->rgb_{dd} setrgbcolor



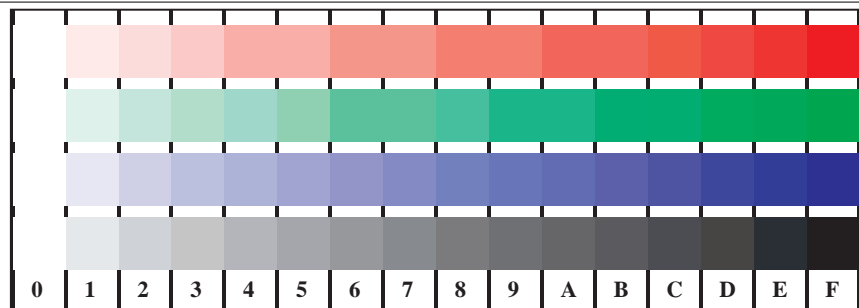
TS840-7, Fig. D3Wdd: CIE 14 colores del test y 2 + 16 pasos de gris (sf); rgb/cmy0->rgb_{dd} setrgbcolor



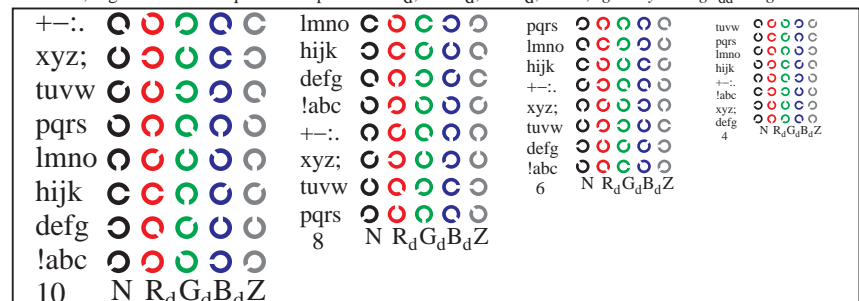
TS841-7, Fig. D7Wdd: anillos de Landolt W-B_d; W-N; PS operator rgb->rgb_{dd} setrgbcolor

gráfico TS84; 4(ISO/IEC 15775 + ISO/IEC TR 24705)
test cromático gráfico RGB, 3D=1, de=0, cmyk*

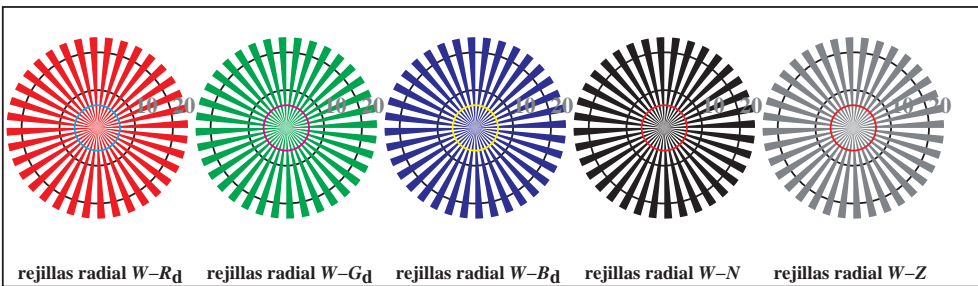
entrada: rgb/cmyk -> rgb_{dd}
salida: 3D-linealización a cmyk*_{dd}



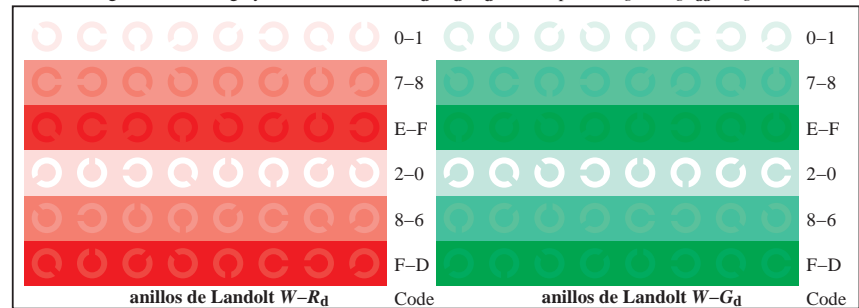
TS841-1, Fig. D4Wdd: 16 equidistante pasos W-R_d; W-G_d; W-B_d; W-N; rgb/cmy0->rgb_{dd} setrgbcolor



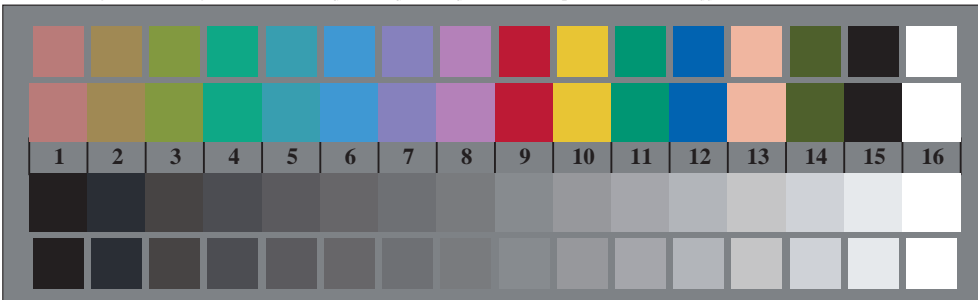
TS841-3, Fig. D5Wdd: codigo y Landolt anillosN; R_d; G_d; B_d; Z; PS operator rgb->rgb_{dd} setrgbcolor



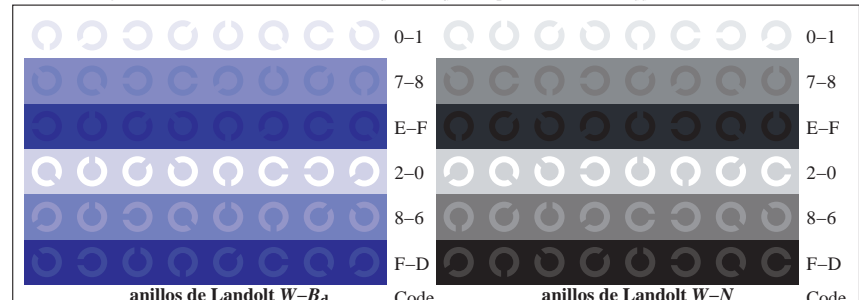
TS840-5, Fig. D2Wdd: rejillas radial W-R_d; W-G_d; W-B_d; W-N; PS operator rgb->rgb_{dd} setrgbcolor



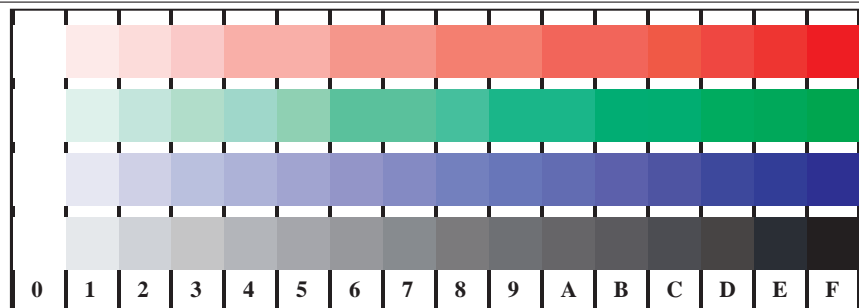
TS841-5, Fig. D6Wdd: anillos de Landolt W-R_d; W-G_d; PS operator rgb->rgb_{dd} setrgbcolor



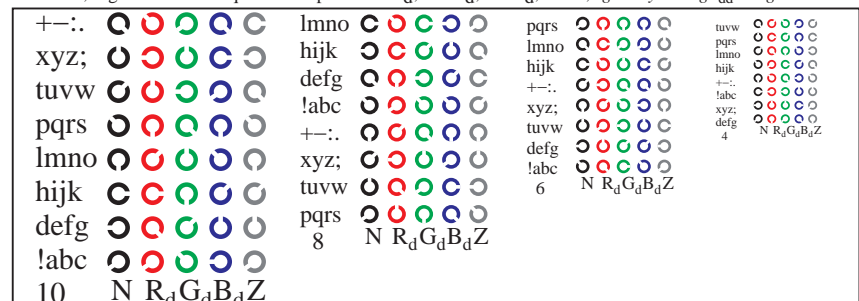
TS840-7, Fig. D3Wdd: CIE 14 colores del test y 2 + 16 pasos de gris (sf); rgb/cmy0->rgb_{dd} setrgbcolor



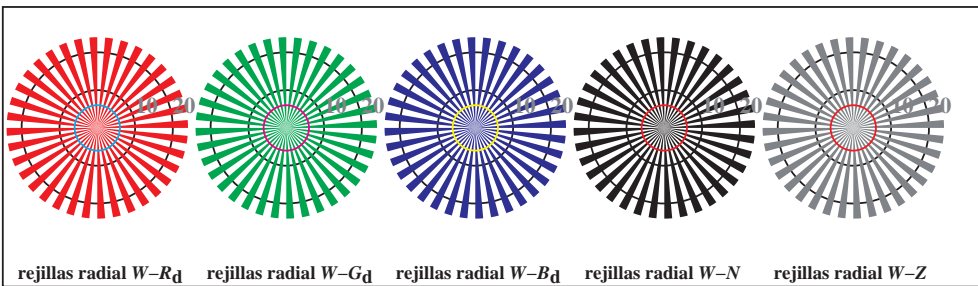
TS841-7, Fig. D7Wdd: anillos de Landolt W-B_d; W-N; PS operator rgb->rgb_{dd} setrgbcolor



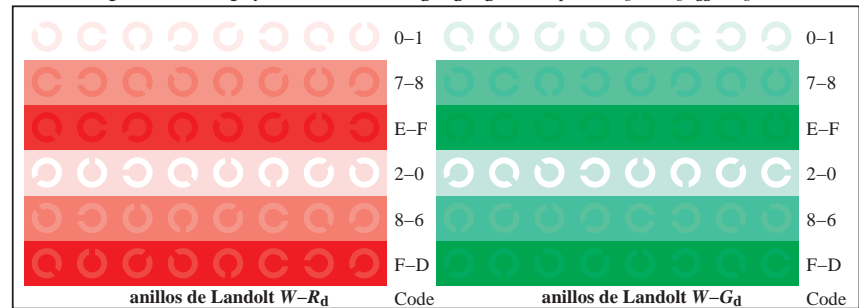
TS841-1, Fig. D4Wdd: 16 equidistante pasos W-R_d; W-G_d; W-B_d; W-N; rgb/cmy0->rgb_{dd} setrgbcolor



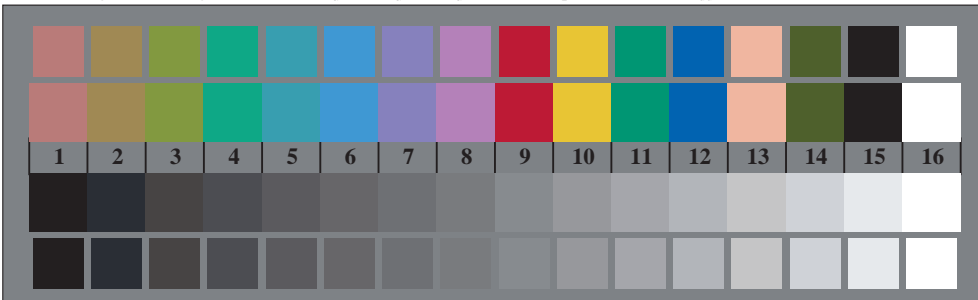
TS841-3, Fig. D5Wdd: codigo y Landolt anillosN; R_d; G_d; B_d; Z; PS operator rgb->rgb_{dd} setrgbcolor



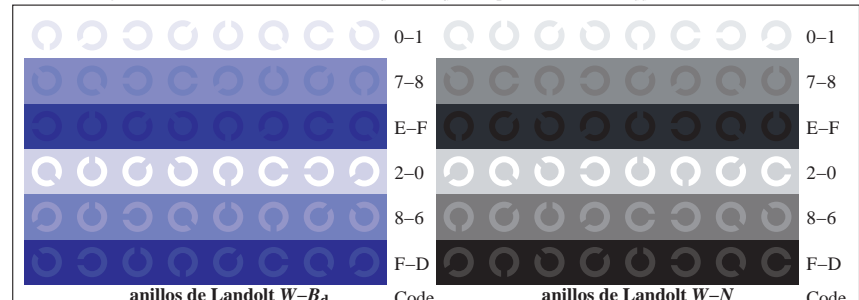
TS840-5, Fig. D2Wdd: rejillas radial W-R_d; W-G_d; W-B_d; W-N; PS operator rgb->rgb_{dd} setrgbcolor



TS841-5, Fig. D6Wdd: anillos de Landolt W-R_d; W-G_d; PS operator rgb->rgb_{dd} setrgbcolor



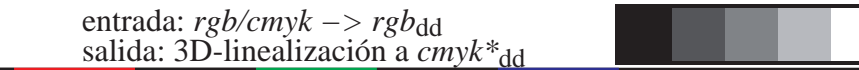
TS840-7, Fig. D3Wdd: CIE 14 colores del test y 2 + 16 pasos de gris (sf); rgb/cmy0->rgb_{dd} setrgbcolor



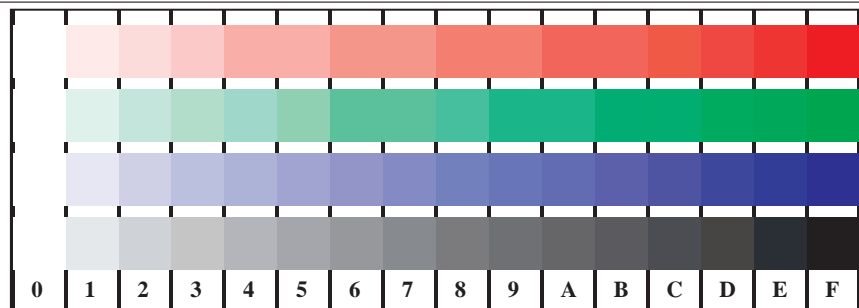
TS841-7, Fig. D7Wdd: anillos de Landolt W-B_d; W-N; PS operator rgb->rgb_{dd} setrgbcolor



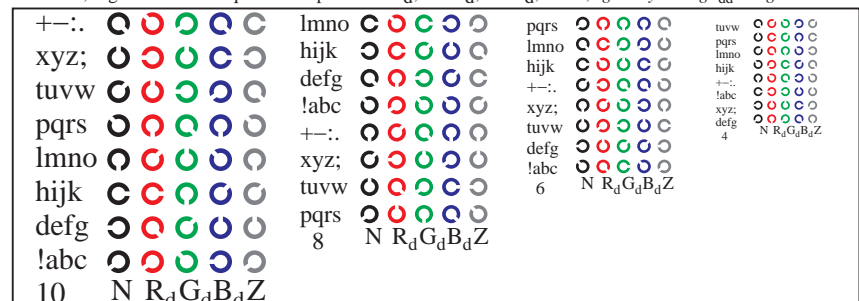
gráfico TS84; 4(ISO/IEC 15775 + ISO/IEC TR 24705)
 test cromático gráfico RGB, 3D=1, de=0, cmyk*



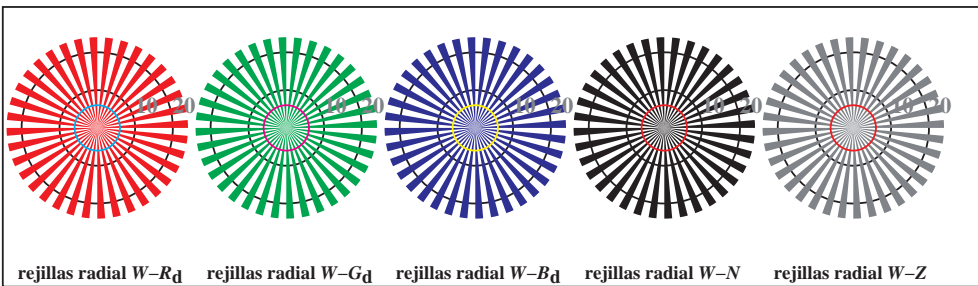
entrada: rgb/cmyk -> rgb_{dd}
 salida: 3D-linealización a cmyk*_{dd}



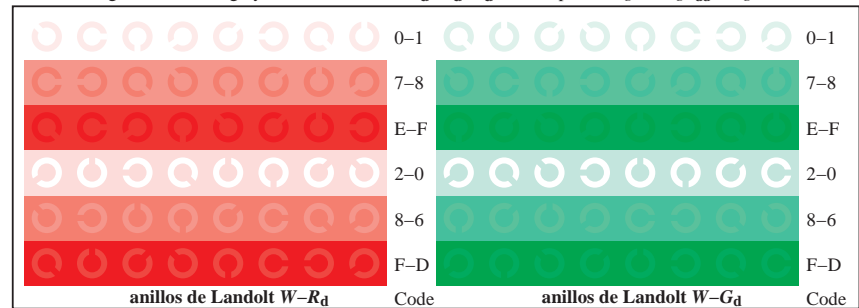
TS841-1, Fig. D4Wdd: 16 equidistante pasos W-R_d; W-G_d; W-B_d; W-N; rgb/cmy0->rgb_{dd} setrgbcolor



TS841-3, Fig. D5Wdd: codigo y Landolt anillosN; R_d; G_d; B_d; Z; PS operator rgb->rgb_{dd} setrgbcolor



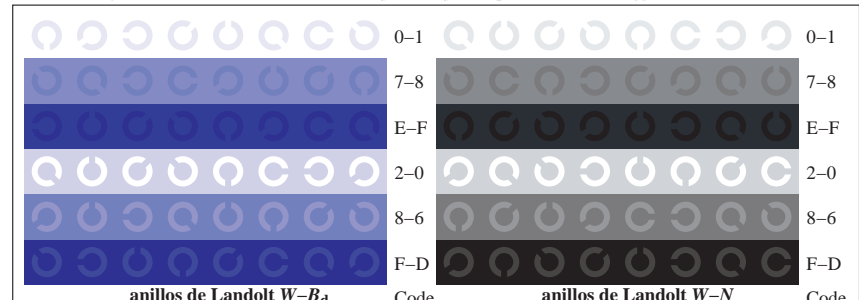
TS840-5, Fig. D2Wdd: rejillas radial W-R_d; W-G_d; W-B_d; W-N; PS operator rgb->rgb_{dd} setrgbcolor



TS841-5, Fig. D6Wdd: anillos de Landolt W-R_d; W-G_d; PS operator rgb->rgb_{dd} setrgbcolor



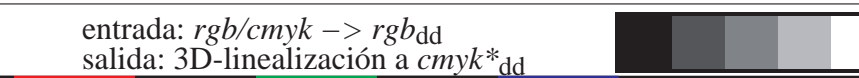
TS840-7, Fig. D3Wdd: CIE 14 colores del test y 2 + 16 pasos de gris (sf); rgb/cmy0->rgb_{dd} setrgbcolor



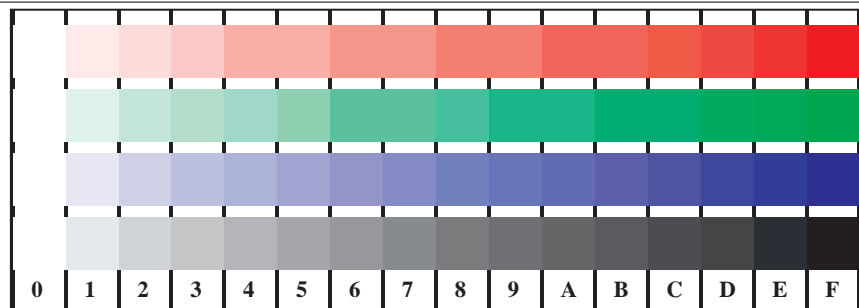
TS841-7, Fig. D7Wdd: anillos de Landolt W-B_d; W-N; PS operator rgb->rgb_{dd} setrgbcolor



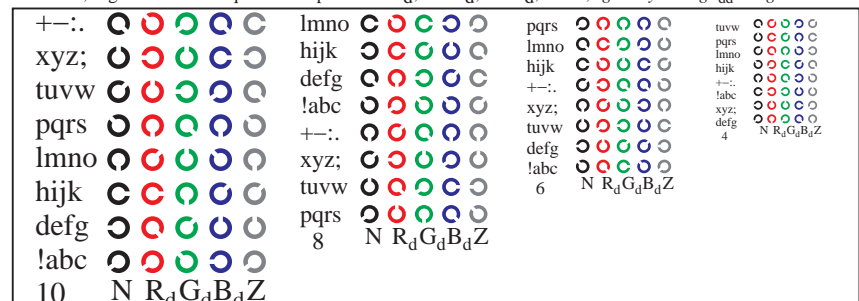
gráfico TS84; 4(ISO/IEC 15775 + ISO/IEC TR 24705)
 test cromático gráfico RGB, 3D=1, de=0, cmyk*



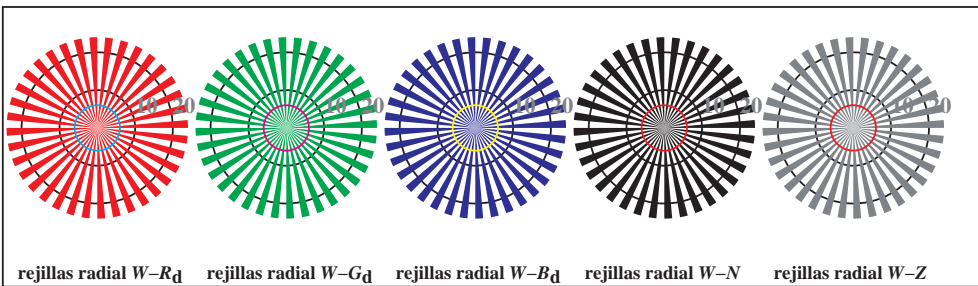
entrada: rgb/cmyk -> rgb_{dd}
 salida: 3D-linealización a cmyk*_{dd}



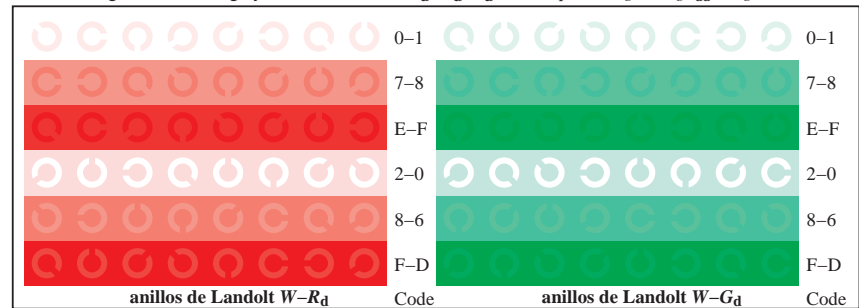
TS841-1, Fig. D4Wdd: 16 equidistante pasos W-R_d; W-G_d; W-B_d; W-N; rgb/cmy0->rgb_{dd} setrgbcolor



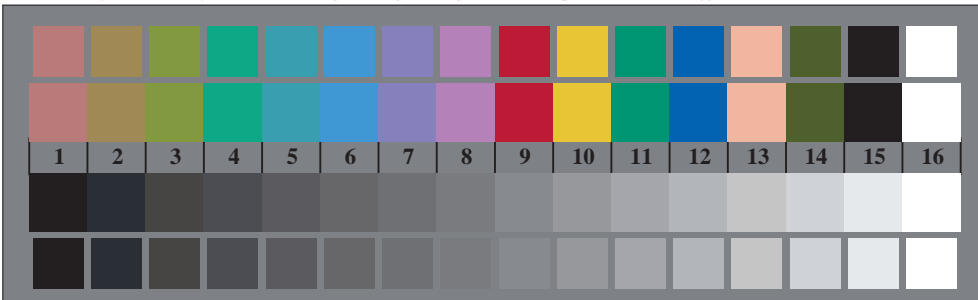
TS841-3, Fig. D5Wdd: código y Landolt anillos N; R_d; G_d; B_d; Z; PS operator rgb->rgb_{dd} setrgbcolor



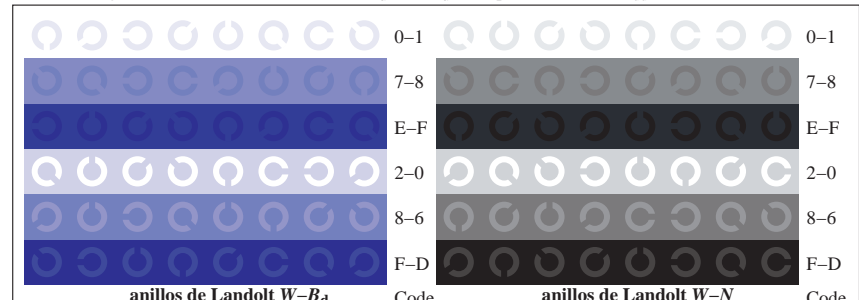
TS840-5, Fig. D2Wdd: rejillas radial W-R_d; W-G_d; W-B_d; W-N; PS operator rgb->rgb_{dd} setrgbcolor



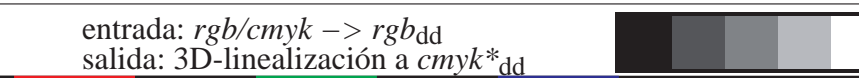
TS841-5, Fig. D6Wdd: anillos de Landolt W-R_d; W-G_d; PS operator rgb->rgb_{dd} setrgbcolor

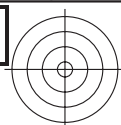


TS840-7, Fig. D3Wdd: CIE 14 colores del test y 2 + 16 pasos de gris (sf); rgb/cmy0->rgb_{dd} setrgbcolor



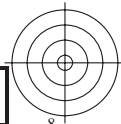
TS841-7, Fig. D7Wdd: anillos de Landolt W-B_d; W-N; PS operator rgb->rgb_{dd} setrgbcolor

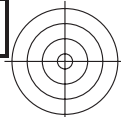
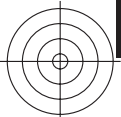




TUB matrícula: 20150701-TS84/TS84L0FA.TXT /.PS TUB material: code=rh4ta
aplicación para la medida salida en la impresión offset, separacióncmyk6* (CMYK)

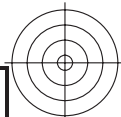
vea archivos semejantes: <http://130.149.60.45/~farbmetrik/TS84/TS84.HTM>
información técnica: <http://www.ps.bam.de> o <http://130.149.60.45/~farbmetrik>





TUB matrícula: 20150701-TS84/TS84L0FA.TXT /.PS TUB material: code=rh4ta
aplicación para la medida salida en la impresión offset, separacióncmyk6* (CMYK)

vea archivos semejantes: <http://130.149.60.45/~farbmetrik/TS84/TS84.HTM>
información técnica: <http://www.ps.bam.de> o <http://130.149.60.45/~farbmetrik>



2=103730-F0

2=103730-F0

TUB matrícula: 20150701-TS84/TS84L0FA.TXT /.PS TUB material: code=rh4ta
aplicación para la medida salida en la impresión offset, separacióncmyk6* (CMYK)

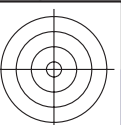
vea archivos semejantes: <http://130.149.60.45/~farbmetrik/TS84/TS84.HTM>
información técnica: <http://www.ps.bam.de> o <http://130.149.60.45/~farbmetrik>



TUB matrícula: 20150701-TS84/TS84L0FA.TXT /.PS TUB material: code=rh4ta
aplicación para la medida salida en la impresión offset, separacióncmyk6* (CMYK)

vea archivos semejantes: <http://130.149.60.45/~farbmetrik/TS84/TS84.HTM>
información técnica: <http://www.ps.bam.de> o <http://130.149.60.45/~farbmetrik>





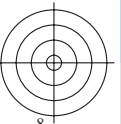
TUB matrícula: 20150701-TS84/TS84L0FA.TXT /.PS TUB material: code=rh4ta
aplicación para la medida salida en la impresión offset, separacióncmyk* (CMYK)

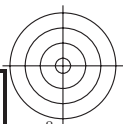
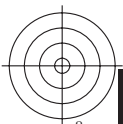
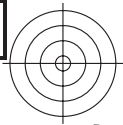
vea archivos semejantes: <http://130.149.60.45/~farbmetrik/TS84/TS84.HTM>
información técnica: <http://www.ps.bam.de> o <http://130.149.60.45/~farbmetrik>

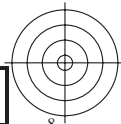
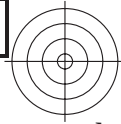


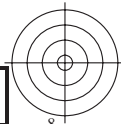
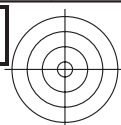
gráfico TS84; 4(ISO/IEC 15775 + ISO/IEC TR 24705)
colores y diferencia en color, ΔE^* , 3D=1, de=0, *cmyk**

entrada: *rgb/cmyk* -> *rgb*_{dd}
salida: 3D-linealización a *cmyk*_{dd}*



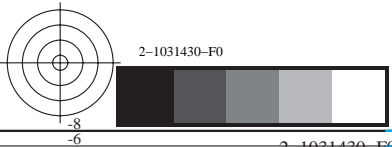


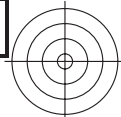




TUB matrícula: 20150701-TS84/TS84L0FA.TXT /.PS TUB material: code=rh4ta
aplicación para la medida salida en la impresión offset, separacióncmyk6* (CMYK)

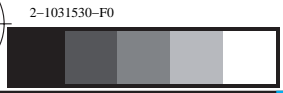
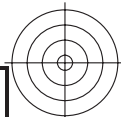
vea archivos semejantes: <http://130.149.60.45/~farbmetrik/TS84/TS84.HTM>
información técnica: <http://www.ps.bam.de> o <http://130.149.60.45/~farbmetrik>

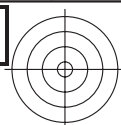




TUB matrícula: 20150701-TS84/TS84L0FA.TXT /.PS TUB material: code=rh4ta
aplicación para la medida salida en la impresión offset, separacióncmyk6* (CMYK)

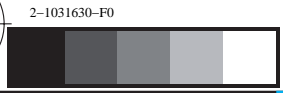
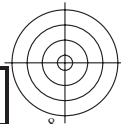
vea archivos semejantes: <http://130.149.60.45/~farbmetrik/TS84/TS84.HTM>
información técnica: <http://www.ps.bam.de> o <http://130.149.60.45/~farbmetrik>

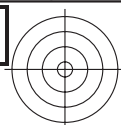




TUB matrícula: 20150701-TS84/TS84L0FA.TXT /.PS TUB material: code=rh4ta
aplicación para la medida salida en la impresión offset, separacióncmyk* (CMYK)

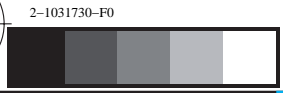
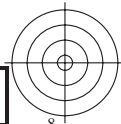
vea archivos semejantes: <http://130.149.60.45/~farbmetrik/TS84/TS84.HTM>
información técnica: <http://www.ps.bam.de> o <http://130.149.60.45/~farbmetrik>





TUB matrícula: 20150701-TS84/TS84L0FA.TXT /.PS TUB material: code=rh4ta
aplicación para la medida salida en la impresión offset, separacióncmyk* (CMYK)

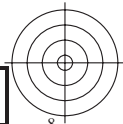
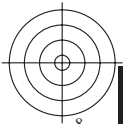
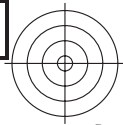
vea archivos semejantes: <http://130.149.60.45/~farbmetrik/TS84/TS84.HTM>
información técnica: <http://www.ps.bam.de> o <http://130.149.60.45/~farbmetrik>

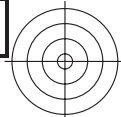


TUB matrícula: 20150701-TS84/TS84L0FA.TXT /.PS TUB material: code=rh4ta
aplicación para la medida salida en la impresión offset, separacióncmyk6* (CMYK)

vea archivos semejantes: <http://130.149.60.45/~farbmetrik/TS84/TS84.HTM>
información técnica: <http://www.ps.bam.de> o <http://130.149.60.45/~farbmetrik>

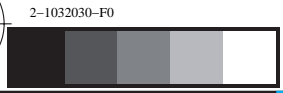
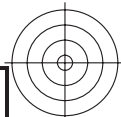


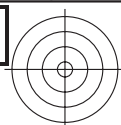




TUB matrícula: 20150701-TS84/TS84L0FA.TXT /.PS TUB material: code=rh4ta
aplicación para la medida salida en la impresión offset, separacióncmyk6* (CMYK)

vea archivos semejantes: <http://130.149.60.45/~farbmetrik/TS84/TS84.HTM>
información técnica: <http://www.ps.bam.de> o <http://130.149.60.45/~farbmetrik>





TUB matrícula: 20150701-TS84/TS84L0FA.TXT /.PS TUB material: code=rh4ta
aplicación para la medida salida en la impresión offset, separacióncmykn6* (CMYK)

vea archivos semejantes: <http://130.149.60.45/~farbmetrik/TS84/TS84.HTM>
información técnica: <http://www.ps.bam.de> o <http://130.149.60.45/~farbmetrik>

