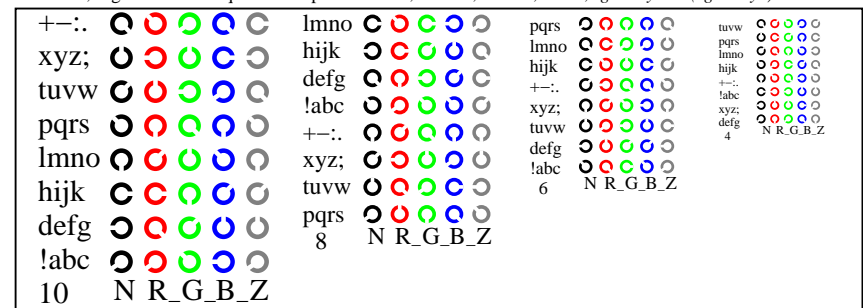
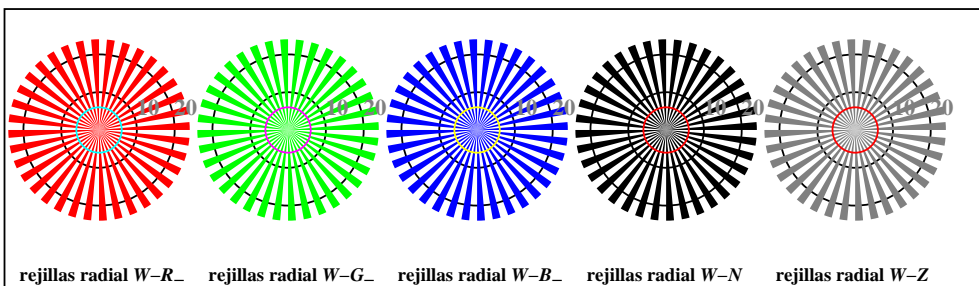


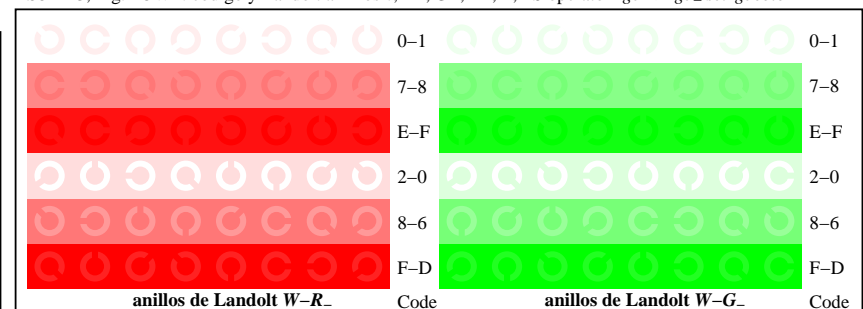
TS841-1, Fig. D4W-: 16 equidistante pasos W-R; W-G; W-B; W-N; rgb/cmy0 set(rgb/cmyk)color



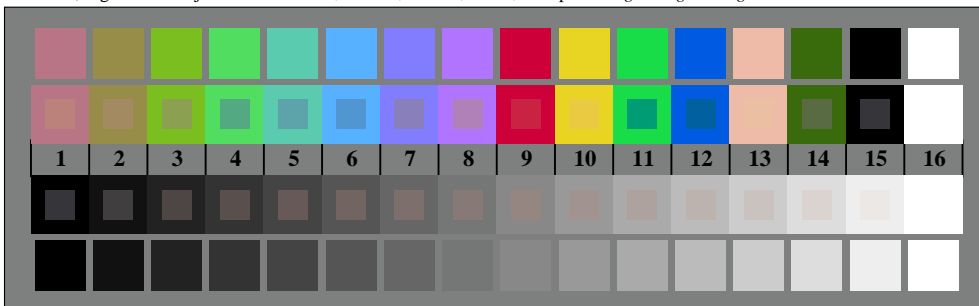
TS841-3, Fig. D5W-: codigo y Landolt anillosN; R; G; B; Z; PS operator rgb->rgb_setrgbcolor



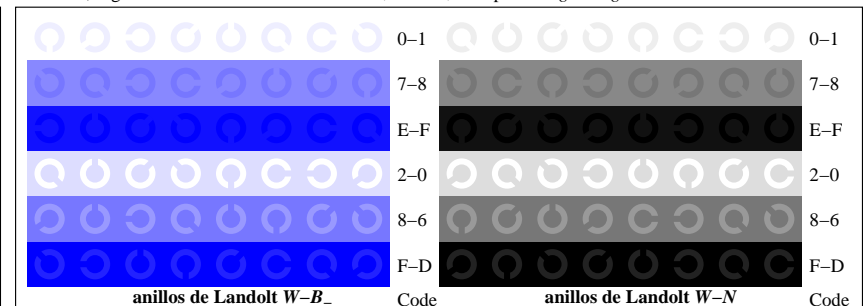
TS840-5, Fig. D2W-: rejillas radial W-R; W-G; W-B; W-N; PS operator rgb->rgb_setrgbcolor



TS841-5, Fig. D6W-: anillos de Landolt W-R; W-G; PS operator rgb_setrgbcolor



TS840-7, Fig. D3W-: CIE 14 colores del test y 2 + 16 pasos de gris (sf); rgb/cmy0 set(rgb/cmyk)color



TS841-7, Fig. D7W-: anillos de Landolt W-B; W-N; PS operator rgb_setrgbcolor