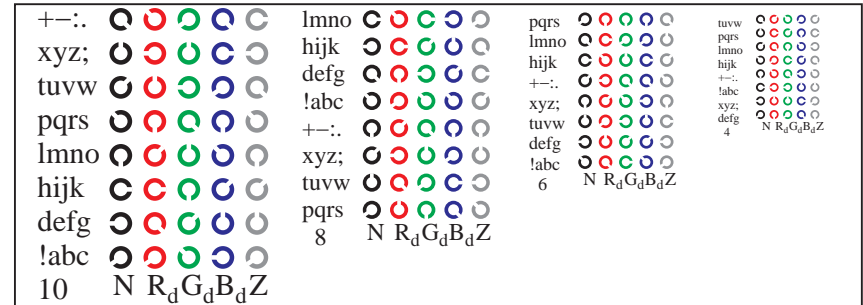
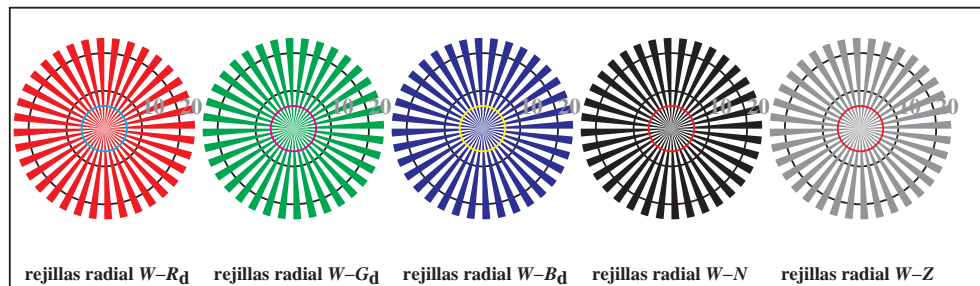


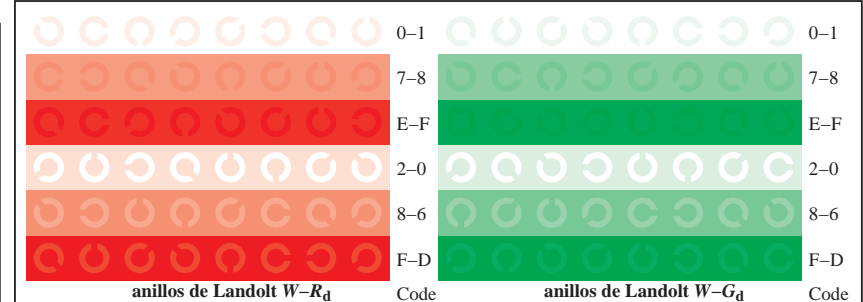
TS841-1, Fig. D4Wd: 16 equidistant pasos $W-R_d$; $W-G_d$; $W-B_d$; $W-N$; $rgb/cmy0 \rightarrow rgb_d$ setrgbcolor



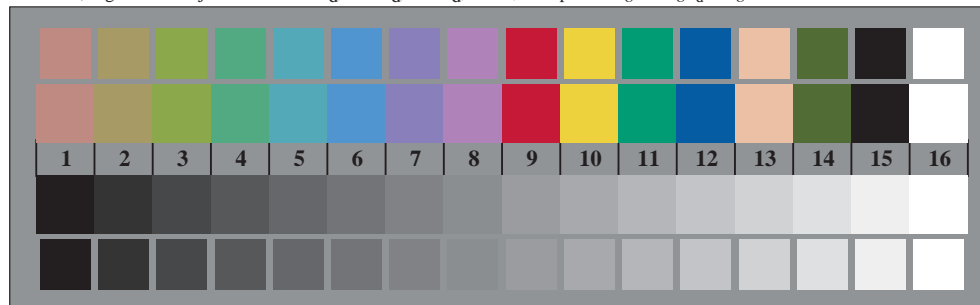
TS841-3, Fig. D5Wd: código y Landolt anillos N ; R_d ; G_d ; B_d ; Z ; PS operator $rgb \rightarrow rgb_d$ setrgbcolor



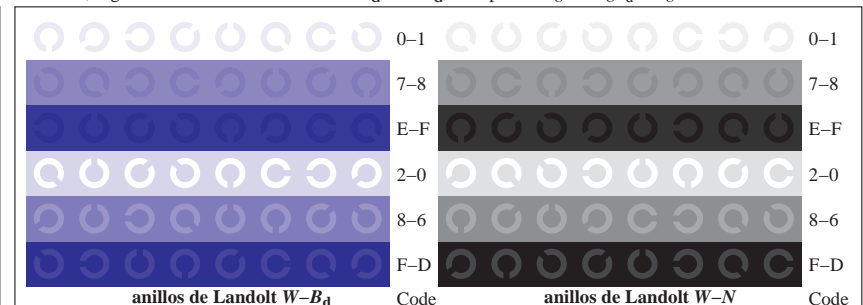
TS840-5, Fig. D2Wd: rejillas radial $W-R_d$; $W-G_d$; $W-B_d$; $W-N$; PS operator $rgb \rightarrow rgb_d$ setrgbcolor



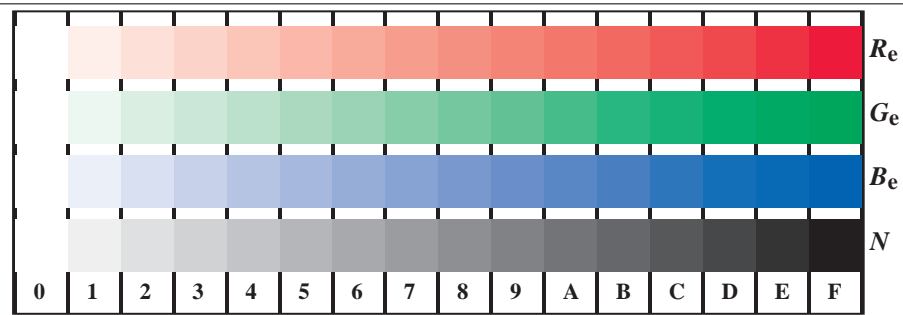
TS841-5, Fig. D6Wd: anillos de Landolt $W-R_d$; $W-G_d$; PS operator $rgb \rightarrow rgb_d$ setrgbcolor



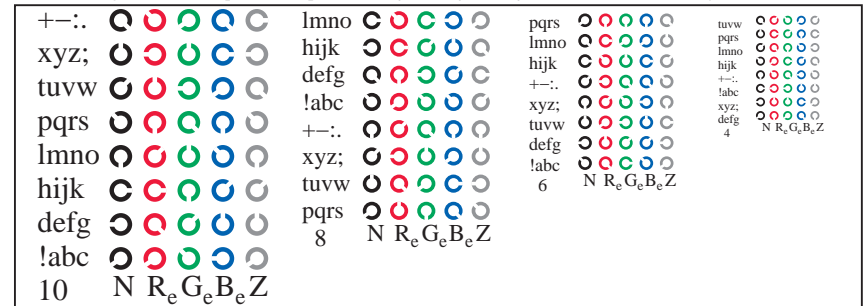
TS840-7, Fig. D3Wd: CIE 14 colores del test y 2 + 16 pasos de gris (sf); $rgb/cmy0 \rightarrow rgb_d$ setrgbcolor



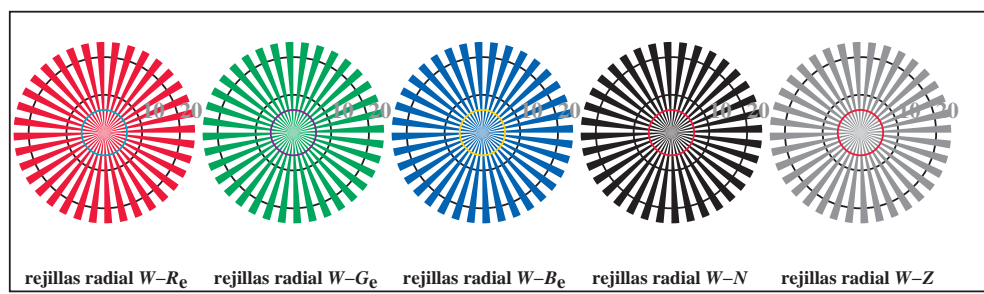
TS841-7, Fig. D7Wd: anillos de Landolt $W-B_d$; $W-N$; PS operator $rgb \rightarrow rgb_d$ setrgbcolor



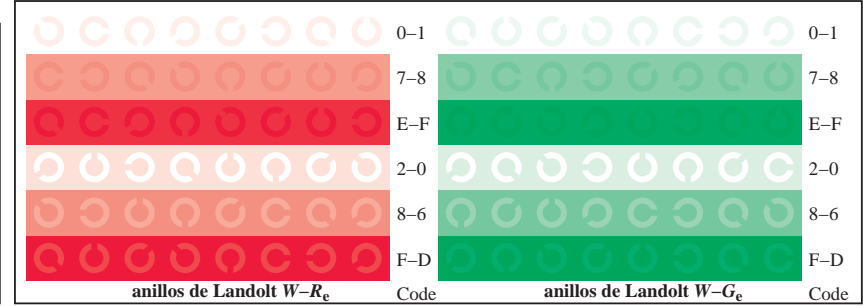
TS841-1, Fig. D4We: 16 equidistante pasos $W-R_e$; $W-G_e$; $W-B_e$; $W-N$; $rgb/cmy0 \rightarrow rgb_e$ *setrgbcolor*



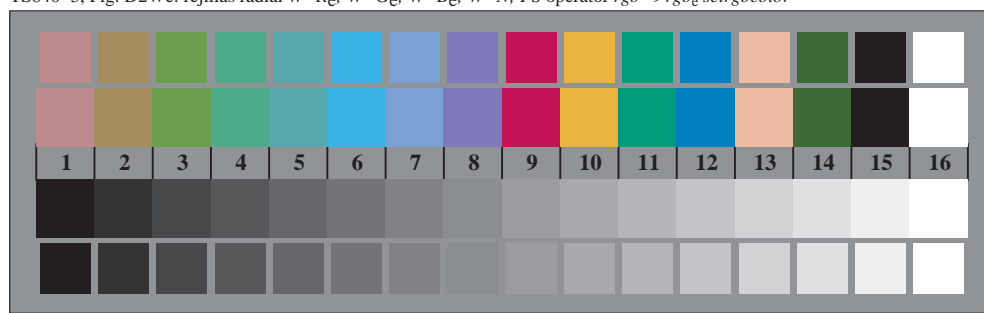
TS841-3, Fig. D5We: código y Landolt anillos N ; R_e ; G_e ; B_e ; Z ; *PS operator* $rgb \rightarrow rgb_e$ *setrgbcolor*



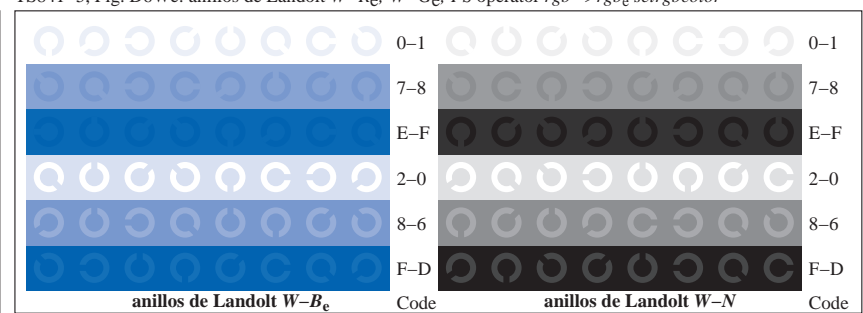
TS840-5, Fig. D2We: rejillas radial $W-R_e$; $W-G_e$; $W-B_e$; $W-N$; *PS operator* $rgb \rightarrow rgb_e$ *setrgbcolor*



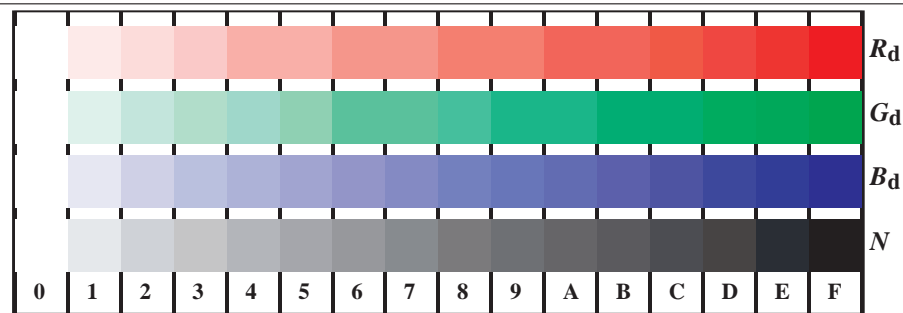
TS841-5, Fig. D6We: anillos de Landolt $W-R_e$; $W-G_e$; *PS operator* $rgb \rightarrow rgb_e$ *setrgbcolor*



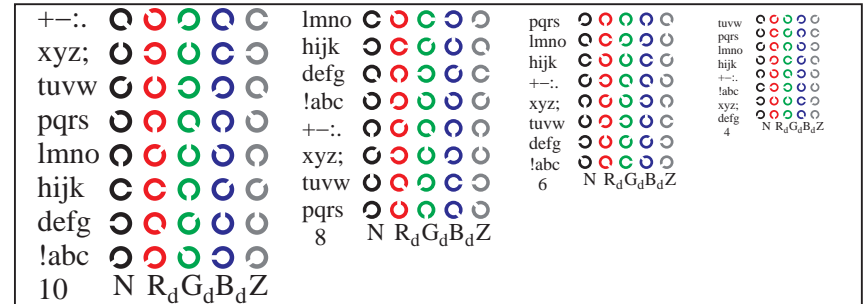
TS840-7, Fig. D3We: CIE 14 colores del test y 2 + 16 pasos de gris (sf); $rgb/cmy0 \rightarrow rgb_e$ *setrgbcolor*



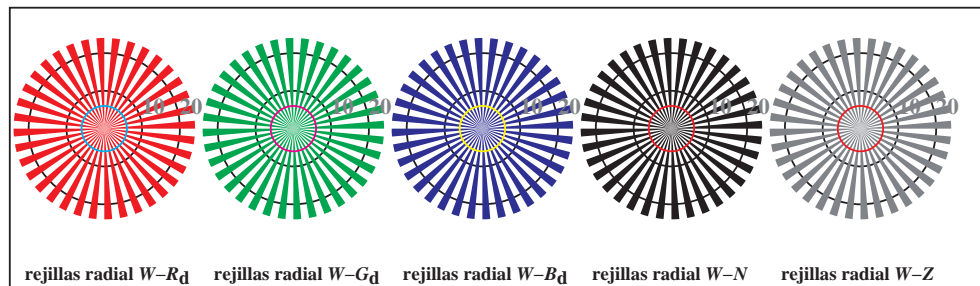
TS841-7, Fig. D7We: anillos de Landolt $W-B_e$; $W-N$; *PS operator* $rgb \rightarrow rgb_e$ *setrgbcolor*



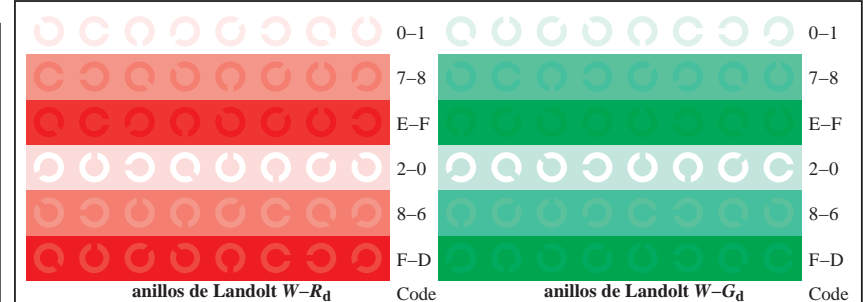
TS841-1, Fig. D4Wdd: 16 equidistante pasos $W-R_d$; $W-G_d$; $W-B_d$; $W-N$; $rgb/cmy0 \rightarrow rgb_{dd}$ setrgbcolor



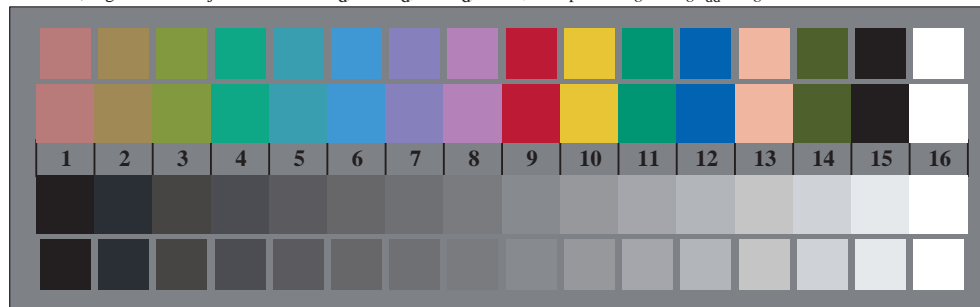
TS841-3, Fig. D5Wdd: código y Landolt anillos N ; R_d ; G_d ; B_d ; Z ; PS operator $rgb \rightarrow rgb_{dd}$ setrgbcolor



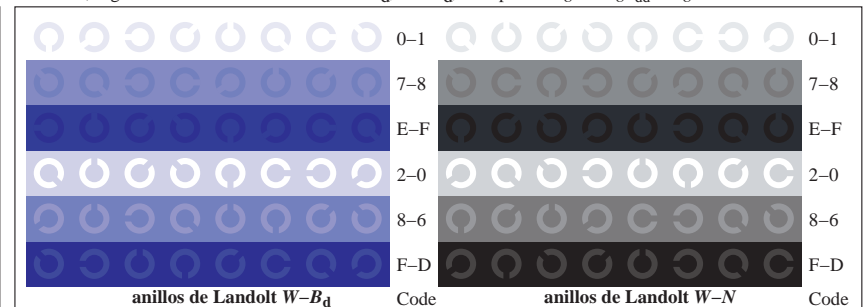
TS840-5, Fig. D2Wdd: rejillas radial $W-R_d$; $W-G_d$; $W-B_d$; $W-N$; PS operator $rgb \rightarrow rgb_{dd}$ setrgbcolor



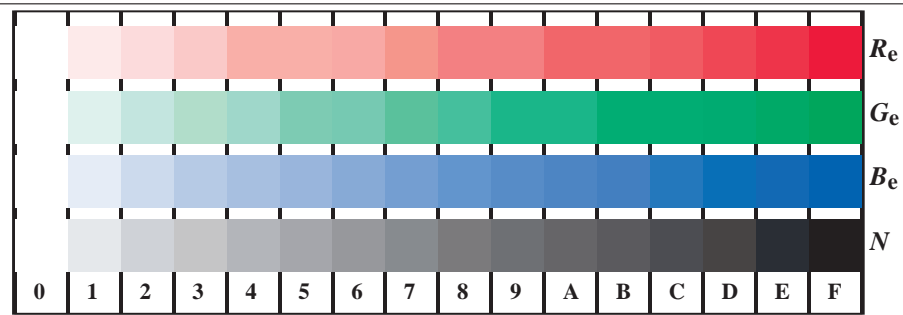
TS841-5, Fig. D6Wdd: anillos de Landolt $W-R_d$; $W-G_d$; PS operator $rgb \rightarrow rgb_{dd}$ setrgbcolor



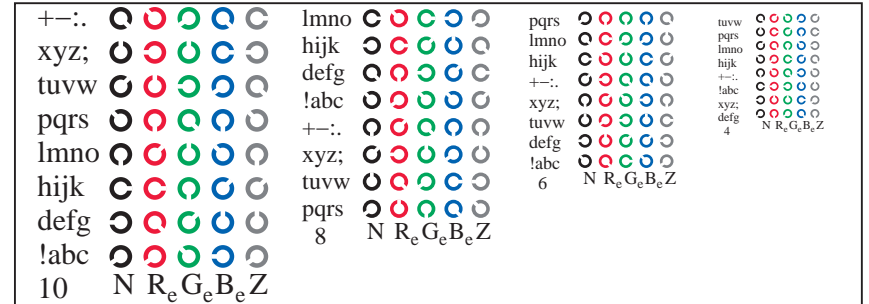
TS840-7, Fig. D3Wdd: CIE 14 colores del test y 2 + 16 pasos de gris (sf); $rgb/cmy0 \rightarrow rgb_{dd}$ setrgbcolor



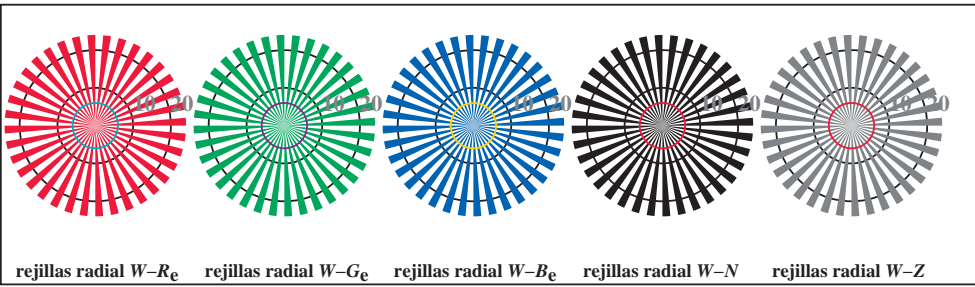
TS841-7, Fig. D7Wdd: anillos de Landolt $W-B_d$; $W-N$; PS operator $rgb \rightarrow rgb_{dd}$ setrgbcolor



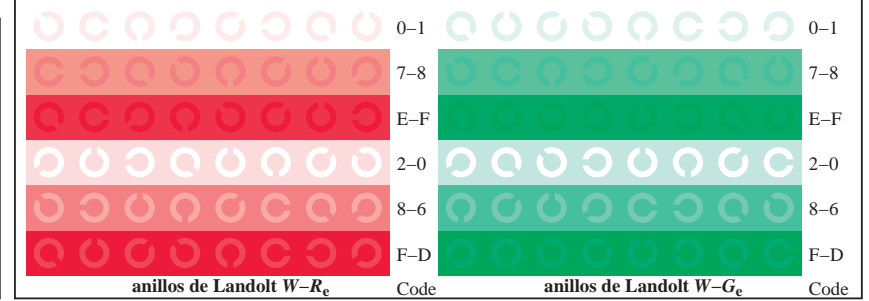
TS841-1, Fig. D4Wde: 16 equidistante pasos $W-R_e$; $W-G_e$; $W-B_e$; $W-N$; $rgb/cmy0 \rightarrow rgb_{de}$ setrgbcolor



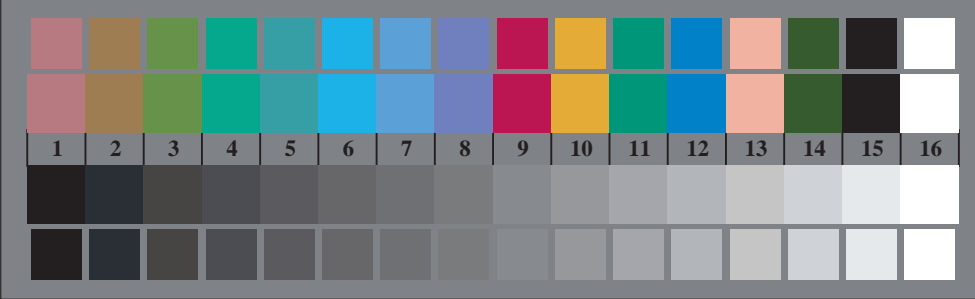
TS841-3, Fig. D5Wde: codigo y Landolt anillos N ; R_e ; G_e ; B_e ; Z ; PS operator $rgb \rightarrow rgb_{de}$ setrgbcolor



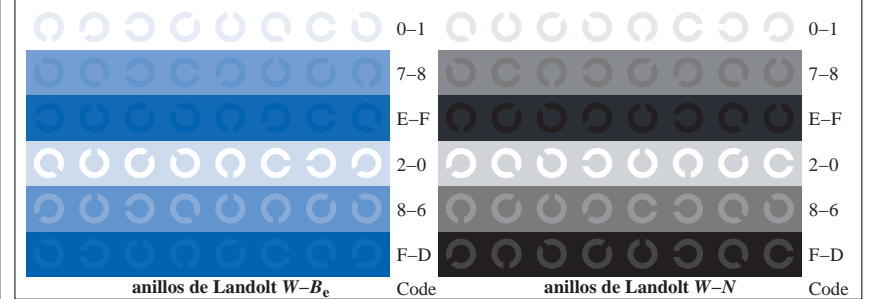
TS840-5, Fig. D2Wde: rejillas radial $W-R_e$; $W-G_e$; $W-B_e$; $W-N$; PS operator $rgb \rightarrow rgb_{de}$ setrgbcolor



TS841-5, Fig. D6Wde: anillos de Landolt $W-R_e$; $W-G_e$; PS operator $rgb \rightarrow rgb_{de}$ setrgbcolor



TS840-7, Fig. D3Wde: CIE 14 colores del test y 2 + 16 pasos de gris (sf); $rgb/cmy0 \rightarrow rgb_{de}$ setrgbcolor



TS841-7, Fig. D7Wde: anillos de Landolt $W-B_e$; $W-N$; PS operator $rgb \rightarrow rgb_{de}$ setrgbcolor