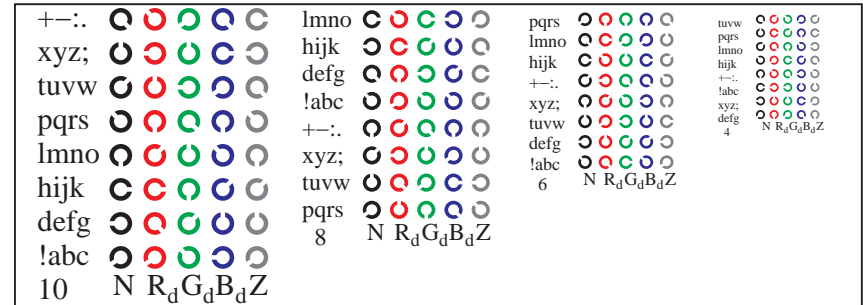
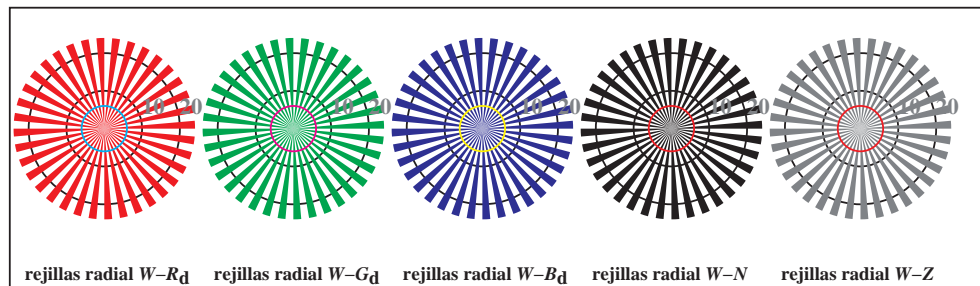


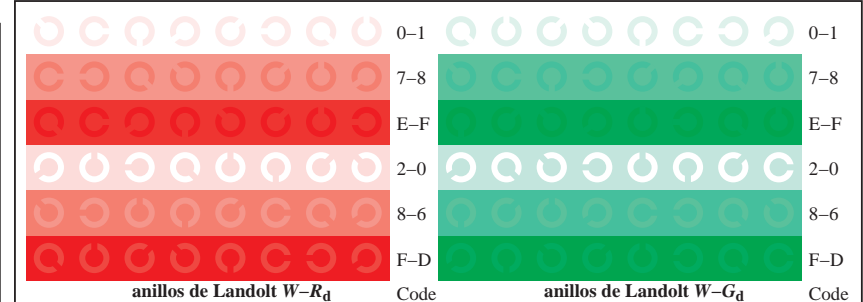
TS841-1, Fig. D4Wdd: 16 equidistante pasos  $W-R_d$ ;  $W-G_d$ ;  $W-B_d$ ;  $W-N$ ;  $rgb/cmy0 \rightarrow rgb_{dd}$  setrgbcolor



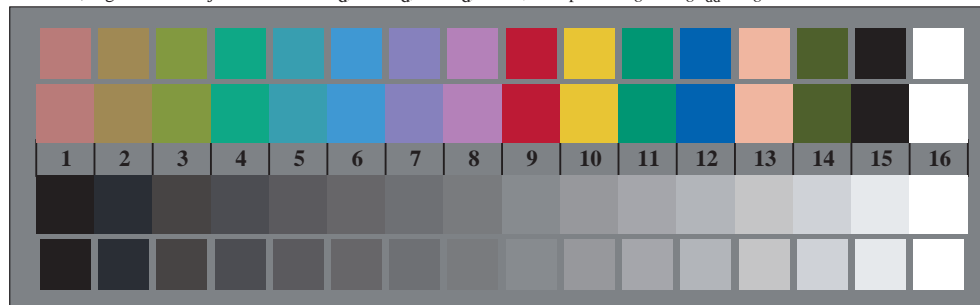
TS841-3, Fig. D5Wdd: codigo y Landolt anillos  $N$ ;  $R_d$ ;  $G_d$ ;  $B_d$ ;  $Z$ ; PS operator  $rgb \rightarrow rgb_{dd}$  setrgbcolor



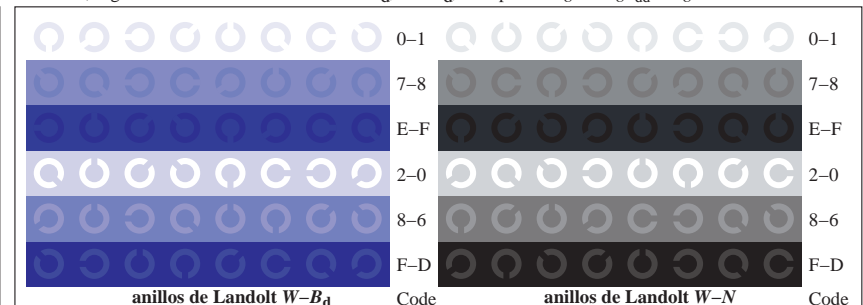
TS840-5, Fig. D2Wdd: rejillas radial  $W-R_d$ ;  $W-G_d$ ;  $W-B_d$ ;  $W-N$ ; PS operator  $rgb \rightarrow rgb_{dd}$  setrgbcolor



TS841-5, Fig. D6Wdd: anillos de Landolt  $W-R_d$ ;  $W-G_d$ ; PS operator  $rgb \rightarrow rgb_{dd}$  setrgbcolor



TS840-7, Fig. D3Wdd: CIE 14 colores del test y 2 + 16 pasos de gris (sf);  $rgb/cmy0 \rightarrow rgb_{dd}$  setrgbcolor



TS841-7, Fig. D7Wdd: anillos de Landolt  $W-B_d$ ;  $W-N$ ; PS operator  $rgb \rightarrow rgb_{dd}$  setrgbcolor