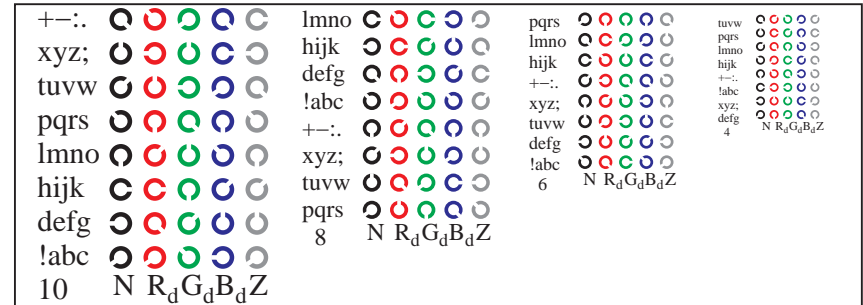
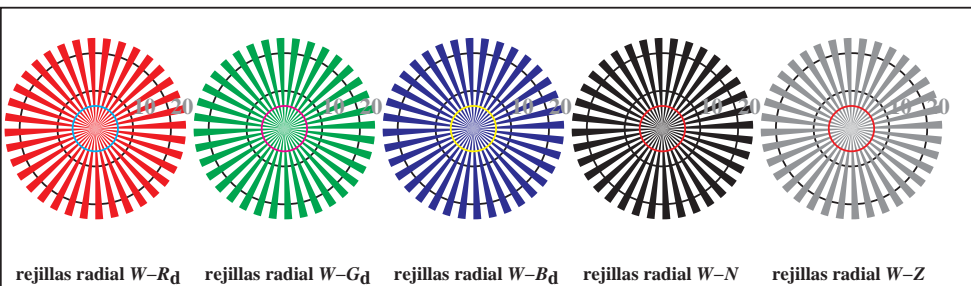


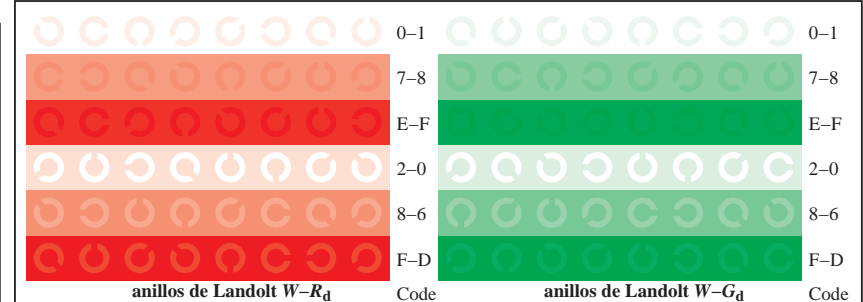
TS841-1, Fig. D4Wd: 16 equidistant pasos $W-R_d$; $W-G_d$; $W-B_d$; $W-N$; $rgb/cmy0 \rightarrow rgb_d$ setrgbcolor



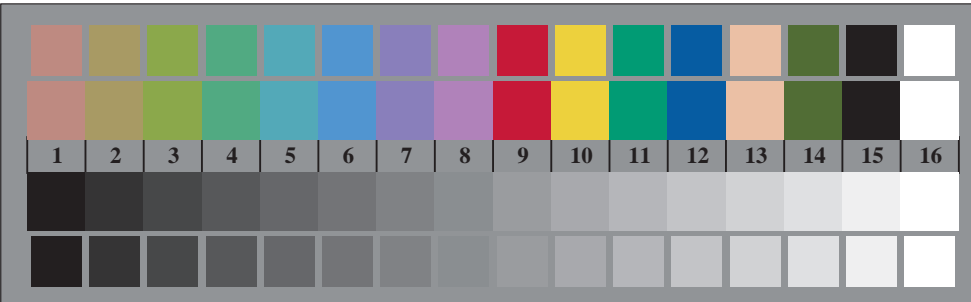
TS841-3, Fig. D5Wd: código y Landolt anillos N ; R_d ; G_d ; B_d ; Z ; PS operator $rgb \rightarrow rgb_d$ setrgbcolor



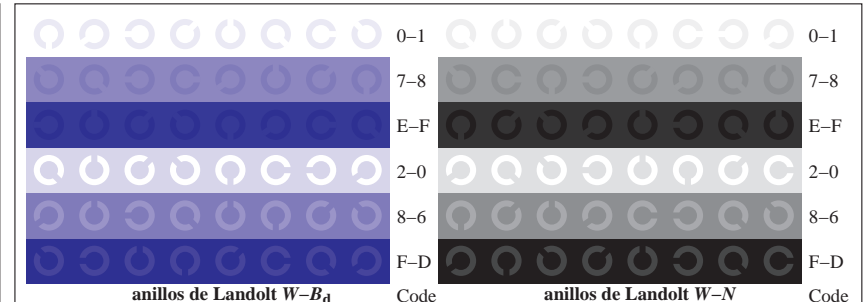
TS840-5, Fig. D2Wd: rejillas radial $W-R_d$; $W-G_d$; $W-B_d$; $W-N$; PS operator $rgb \rightarrow rgb_d$ setrgbcolor



TS841-5, Fig. D6Wd: anillos de Landolt $W-R_d$; $W-G_d$; PS operator $rgb \rightarrow rgb_d$ setrgbcolor



TS840-7, Fig. D3Wd: CIE 14 colores del test y 2 + 16 pasos de gris (sf); $rgb/cmy0 \rightarrow rgb_d$ setrgbcolor



TS841-7, Fig. D7Wd: anillos de Landolt $W-B_d$; $W-N$; PS operator $rgb \rightarrow rgb_d$ setrgbcolor