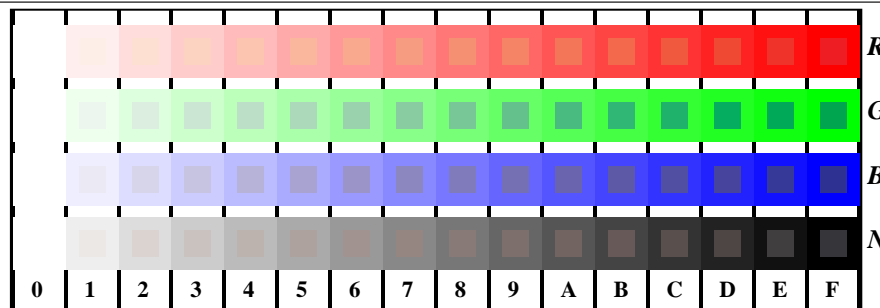


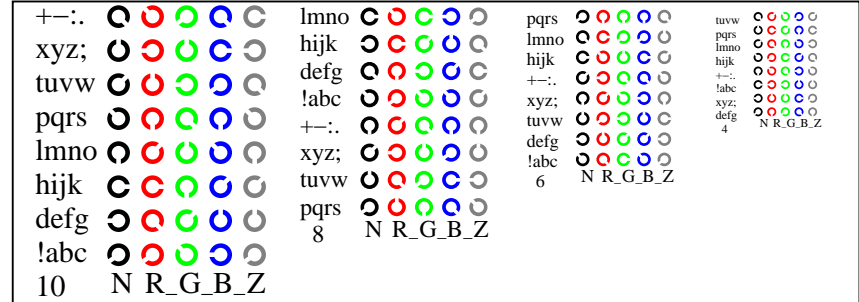
vea archivos semejantes: <http://130.149.60.45/~farbmetrik/TS81/TS81.HTM>  
información técnica: <http://www.ps.bam.de> o <http://130.149.60.45/~farbmetrik>

TUB matrícula: 20150701-TS81/TS81L0NP.PDF /.PS  
aplicación para la medida de display output

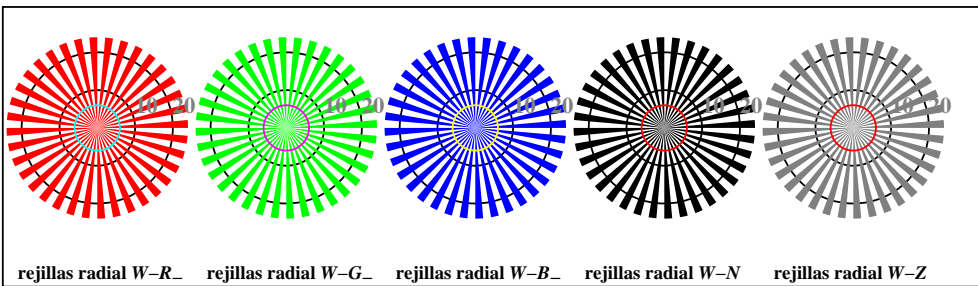
TUB material: code=rh4ta



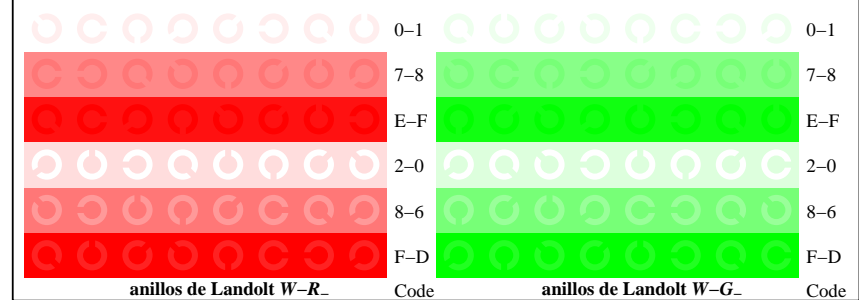
TS811-1, Fig. D4W-: 16 equidistante pasos W-R\_; W-G\_; W-B\_; W-N; rgb/cmy0 set(rgb/cmyk)color



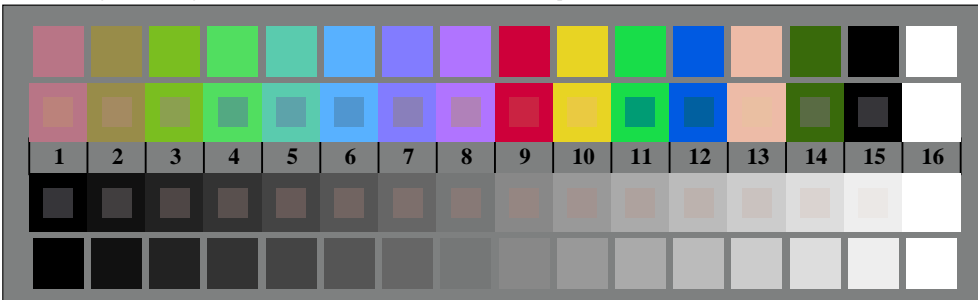
TS811-3, Fig. D5W-: codigo y Landolt anillos N; R\_; G\_; B\_; Z; PS operator rgb->rgb\_setrgbcolor



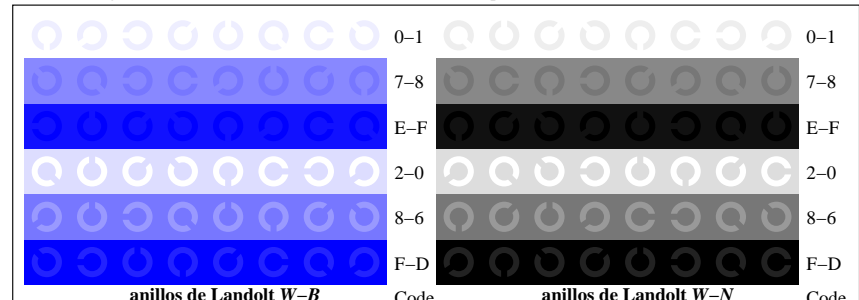
TS810-5, Fig. D2W-: rejillas radial W-R\_; W-G\_; W-B\_; W-N; PS operator rgb->rgb\_setrgbcolor



TS811-5, Fig. D6W-: anillos de Landolt W-R\_; W-G\_; PS operator rgb\_setrgbcolor



TS810-7, Fig. D3W-: CIE 14 colores del test y 2 + 16 pasos de gris (sf); rgb/cmy0 set(rgb/cmyk)color



TS811-7, Fig. D7W-: anillos de Landolt W-B\_; W-N; PS operator rgb\_setrgbcolor



gráfico TS81; 4(ISO/IEC 15775 + ISO/IEC TR 24705)  
test cromático gráfico RGB

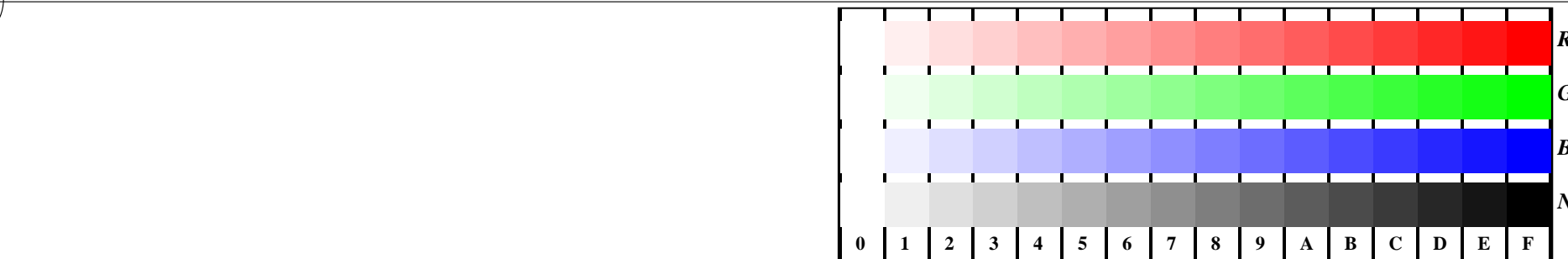
entrada: rgb/cmyk -> w/rgb/cmyk\_  
salida: ningún cambio



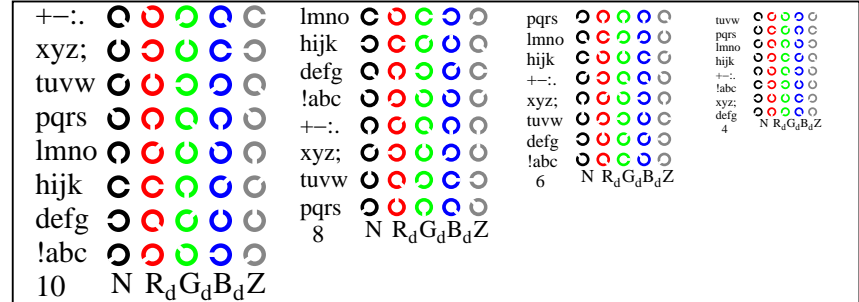
vea archivos semejantes: http://130.149.60.45/~farbmetrik/TS81/TS81.HTM  
información técnica: http://www.ps.bam.de o http://130.149.60.45/~farbmetrik

TUB matrícula: 20150701-TS81/TS81L0NP.PDF /.PS  
aplicación para la medida de display output, ninguna separación

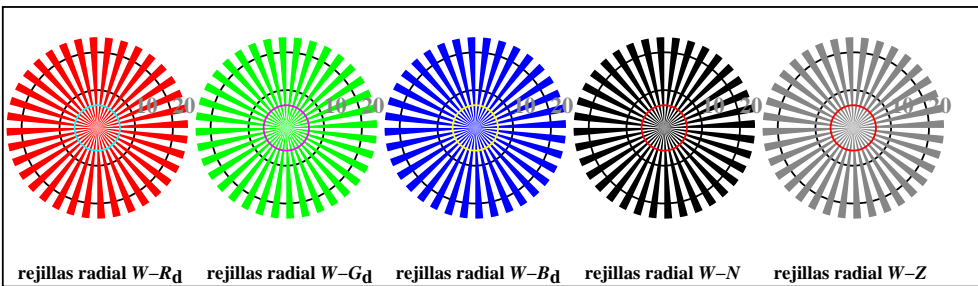
TUB material: code=rh4ta



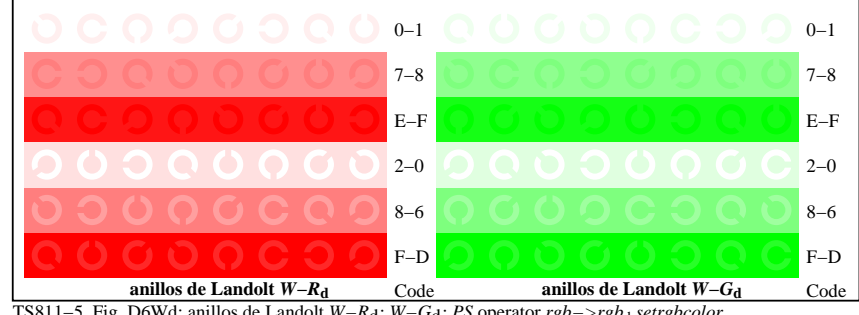
TS811-1, Fig. D4Wd: 16 equidistante pasos  $W-R_d$ ;  $W-G_d$ ;  $W-B_d$ ;  $W-N$ ;  $rgb/cmy0 \rightarrow rgb_d$  setrgbcolor



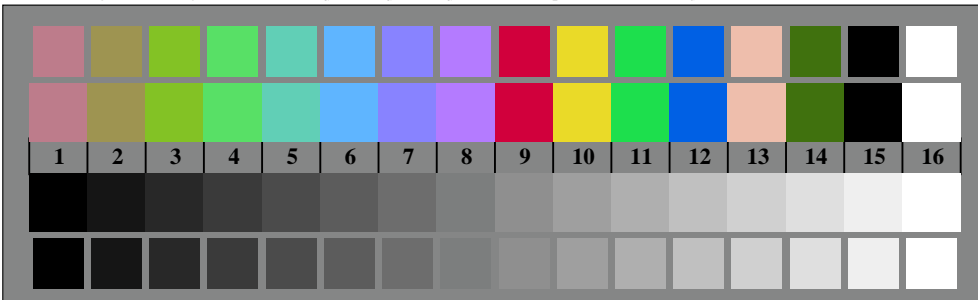
TS811-3, Fig. D5Wd: código y Landolt anillos  $N$ ;  $R_d$ ;  $G_d$ ;  $B_d$ ;  $Z$ ; PS operator  $rgb \rightarrow rgb_d$  setrgbcolor



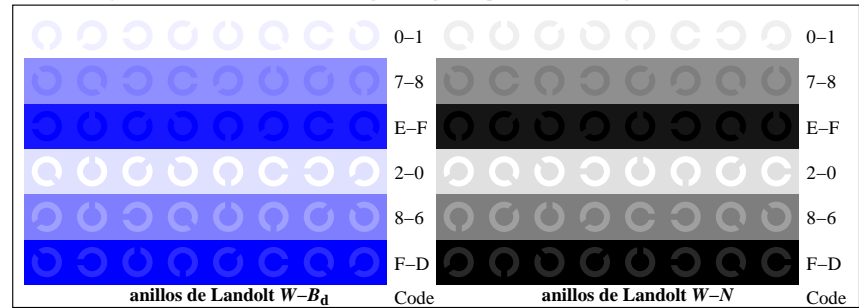
TS810-5, Fig. D2Wd: rejillas radial  $W-R_d$ ;  $W-G_d$ ;  $W-B_d$ ;  $W-N$ ; PS operator  $rgb \rightarrow rgb_d$  setrgbcolor



TS811-5, Fig. D6Wd: anillos de Landolt  $W-R_d$ ;  $W-G_d$ ; PS operator  $rgb \rightarrow rgb_d$  setrgbcolor



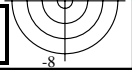
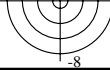
TS810-7, Fig. D3Wd: CIE 14 colores del test y 2 + 16 pasos de gris (sf);  $rgb/cmy0 \rightarrow rgb_d$  setrgbcolor



TS811-7, Fig. D7Wd: anillos de Landolt  $W-B_d$ ;  $W-N$ ; PS operator  $rgb \rightarrow rgb_d$  setrgbcolor

gráfico TS81; 4(ISO/IEC 15775 + ISO/IEC TR 24705)  
test cromático gráfico RGB, 3D=0, de=0, sRGB

entrada:  $rgb/cmyk \rightarrow rgb_d$   
salida: transfiera a  $rgb_d$



vea archivos semejantes: <http://130.149.60.45/~farbmetrik/TS81/TS81.HTM>  
información técnica: <http://www.ps.bam.de> o <http://130.149.60.45/~farbmetrik>

Table with columns: n/j, HIC\*Fa, rgb\*Fa, icf\*Fa, hsi\*Fa, rgb\*Fa, LabCh\*Fa, rgb\*Fa, LabCh\*Fa, DE\*Fa, hsiMd, rgb\*Md, LabCh\*Md. It contains multiple rows of color and density data for various color patches.

delta E\* = 0.9

TUB matrícula: 20150701-TS81/TS81L0NP.PDF /.PS  
aplicación para la medida de display output, ninguna separación  
TUB material: code=rh4ta

Table with columns for file names (e.g., R00Y\_100\_100a), colorimetric data (HIC, rgb, iet, hsi, LabCh, DE, hsiM, rgbM, LabChM), and numerical values. Includes a 'delta E\*' = 6.5

Table with columns: n=j, HIC\*Fa, rgb\_Fa, icf\_Fa, hsi\_Fa, rgb\*Fa, LabCh\*Fa, DE\*Fa, hsi\_Md, rgb\*Md, LabCh\*Md. It contains a large grid of numerical data representing color transfer characteristics.

delta E\*\* = 4.6

gráfico TS81; 4(ISO/IEC 15775 + ISO/IEC TR 24705) colores y diferencia en color, ΔE\*, 3D=0, de=0, sRGB

entrada: rgb/cmyk -> rgbd salida: transfiera a rgbd

vea archivos semejantes: http://130.149.60.45/~farbmetrik/TS81/TS81.HTM información técnica: http://www.ps.bam.de o http://130.149.60.45/~farbmetrik

TUB matrícula: 20150701-TS81/TS81LONP.PDF /PS aplicación para la medida de display output, ninguna separación TUB material: code=rh4ta

vea archivos semejantes: <http://130.149.60.45/~farbmetrik/TS81/TS81LONP.PDF> /PS  
información técnica: <http://www.ps.bam.de> o <http://130.149.60.45/~farbmetrik>

Table with columns for color channels (HIC\*Fa, rgb\*Fa, icf\*Fa, hsi\*Fa, LabCh\*Fa, DE\*Fa, hsiMd, rgb\*Ma, LabCh\*Ma) and rows for various color patches (e.g., R00Y, B50R, G50B, etc.).

delta E\* = 8.3

TUB matrícula: 20150701-TS81/TS81LONP.PDF /PS  
aplicación para la medida de display output, ninguna separación  
TUB material: code=rh4ta

vea archivos semejantes: <http://130.149.60.45/~farbmetrik/TS81/TS81LONP.PDF> / .PS  
información técnica: <http://www.ps.bam.de> o <http://130.149.60.45/~farbmetrik>

Table with columns: n, HIC\*Fa, rgb\*Fa, icf\*Fa, hsi\*Fa, rgbb\*Fa, LabCh\*Fa, rrgb\*Fa, LabCh\*Fa, DE\*Fa, hsiMd, rrgb\*Ma, LabCh\*Ma. It contains a large grid of numerical data representing color transfer characteristics.

delta E\*94 = 10.2

gráfico TS81; 4(ISO/IEC 15775 + ISO/IEC TR 24705)  
colores y diferencia en color, ΔE\*, 3D=0, de=0, sRGB

entrada: rgb/cmyk -> rgbd  
salida: transferiera a rgbd

TUB matrícula: 20150701-TS81/TS81LONP.PDF / .PS  
aplicación para la medida de display output, ninguna separación  
TUB material: code=rha4ta

vea archivos semejantes: <http://130.149.60.45/~farbmetrik/TS81/TS81LONP.PDF> / .PS  
información técnica: <http://www.ps.bam.de> o <http://130.149.60.45/~farbmetrik>

Table with columns for color names (HIC, rgb, iet, hsi, LabCh, DE, hsiMd, rGb, LabCh, rGbMd, LabChMd) and numerical values for each color. Includes a 'delta E\*94 = 10.5' label at the bottom right of the table area.

gráfico TS81; 4(ISO/IEC 15775 + ISO/IEC TR 24705)  
colores y diferencia en color, ΔE\*, 3D=0, de=0, sRGB

entrada: *rgb/cmyk* -> *rgb*<sub>d</sub>  
salida: *transfiera* a *rgb*<sub>d</sub>

TUB matrícula: 20150701-TS81/TS81LONP.PDF / .PS  
aplicación para la medida de display output, ninguna separación  
TUB material: code=rh4ta



Table with columns for color channels (HIC, rgb, icf, hsi, LabCh, DE, hsi, rgb, LabCh) and numerical values for each channel across various color patches (n=324 to 404).

2-003830-F0

TS810-7N, 9/18-F

gráfico TS81; 4(ISO/IEC 15775 + ISO/IEC TR 24705) colores y diferencia en color, ΔE\*, 3D=0, de=0, sRGB

entrada: rgb/cmyk -> rgbd salida: transfiera a rgbd

delta E\*\* = 10.1

vea archivos semejantes: http://130.149.60.45/~farbmetrik/TS81/TS81.HTM información técnica: http://www.ps.bam.de o http://130.149.60.45/~farbmetrik

TUB matrícula: 20150701-TS81/TS81LONP.PDF /PS aplicación para la medida de display output, ninguna separación TUB material: code=rh4ta

vea archivos semejantes: <http://130.149.60.45/~farbmetrik/TS81/TS81.HTM>  
información técnica: <http://www.ps.bam.de> o <http://130.149.60.45/~farbmetrik>

Table with columns for color names (e.g., R00Y\_062\_062a), numerical values, and a final column for delta E\* values. The table is organized into multiple columns for different color groups.

2-003930-F0

TS810-7N, 10I18-F

delta E\* = 9.7

gráfico TS81; 4(ISO/IEC 15775 + ISO/IEC TR 24705)  
colores y diferencia en color, ΔE\*, 3D=0, de=0, sRGB

entrada: rgb/cmyk -> rgbd  
salida: transfiera a rgbd

TUB matrícula: 20150701-TS81/TS81LONP.PDF /.PS  
aplicación para la medida de display output, ninguna separación  
TUB material: code=rh4ta

Table with columns for color channels (HIC, rgb, iet, hsi, LabCh, rbg, LabCh, DE, hsi, rbg, LabCh) and rows for various color patches (486-566). Includes a 'delta E\*' = 9.4' label at the bottom right of the table area.

gráfico TS81; 4(ISO/IEC 15775 + ISO/IEC TR 24705) colores y diferencia en color, ΔE\*, 3D=0, de=0, sRGB

entrada: rgb/cmyk -> rgbd salida: transfiera a rgbd

vea archivos semejantes: http://130.149.60.45/~farbmetrik/TS81/TS81LONP.PDF /.PS información técnica: http://www.ps.bam.de o http://130.149.60.45/~farbmetrik

TUB matrícula: 20150701-TS81/TS81LONP.PDF /.PS aplicación para la medida de display output, ninguna separación TUB material: code=rh4ta

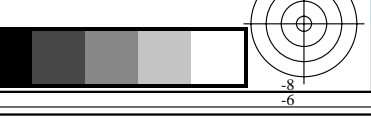
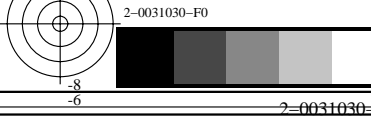


Table with columns for color channels (HIC, rgb, iet, hsi, LabCh, DE, hsi, rbg, LabCh) and rows for various color patches (e.g., 567, 568, 569, etc.).

gráfico TS81; 4(ISO/IEC 15775 + ISO/IEC TR 24705) colores y diferencia en color, ΔE\*, 3D=0, de=0, sRGB

entrada: rgb/cmyk -> rgbd salida: transfiera a rgbd

delta E\* = 9.2

vea archivos semejantes: http://130.149.60.45/~farbmetrik/TS81/TS81.HTM informacion técnica: http://www.ps.bam.de o http://130.149.60.45/~farbmetrik

TUB matrícula: 20150701-TS81/TS81LONP.PDF /.PS aplicación para la medida de display output, ninguna separación TUB material: code=rh4ta

Table with columns for n, HIC\*Fa, rgb\_Fa, icf\_Fa, hsi\_Fa, rgb\*Fa, LabCh\*Fa, and DE\*Fa/hsiMd/rgb\*Md/LabCh\*Md. It contains 20 rows of data for various color patches and their measurements.

delta E\*\* = 9.3

gráfico TS81; 4(ISO/IEC 15775 + ISO/IEC TR 24705) colores y diferencia en color, ΔE\*, 3D=0, de=0, sRGB

entrada: rgb/cmyk -> rgbd salida: transfiera a rgbd

vea archivos semejantes: http://130.149.60.45/~farbmetrik/TS81/TS81LONP.PDF /.PS información técnica: http://www.ps.bam.de o http://130.149.60.45/~farbmetrik

TUB matrícula: 20150701-TS81/TS81LONP.PDF /.PS aplicación para la medida de display output, ninguna separación TUB material: code=rh4ta

Table with columns for various colorimetric parameters (n, HIC\*Fa, rgb\*Fa, icf\*Fa, hsi\*Fa, LabCh\*Fa, DE\*Fa, hsiMd, rgb\*Ma, LabCh\*Ma) and rows for different color patches (e.g., 729 NW\_100a, 730 G50B\_100\_012a, etc.)

delta E\*\* = 7.3

gráfico TS81; 4(ISO/IEC 15775 + ISO/IEC TR 24705) colores y diferencia en color, ΔE\*, 3D=0, de=0, sRGB

entrada: rgb/cmyk -> rgbd salida: transfiera a rgbd

vea archivos semejantes: http://130.149.60.45/~farbmetrik/TS81/TS81LONP.PDF /.PS información técnica: http://www.ps.bam.de o http://130.149.60.45/~farbmetrik

TUB matrícula: 20150701-TS81/TS81LONP.PDF /.PS aplicación para la medida de display output, ninguna separación TUB material: code=rh4ta



vea archivos semejantes: <http://130.149.60.45/~farbmetrik/TS81/TS81.HTM>  
información técnica: <http://www.ps.bam.de> o <http://130.149.60.45/~farbmetrik>

TUB matrícula: 20150701-TS81/TS81LONP.PDF /.PS  
aplicación para la medida de display output, ninguna separación  
TUB material: code=rha4ta

Table with 16 columns: n, HIC\*Fa, rgb\_Fa, icf\_Fa, hsi\_Fa, rgb\*Fa, LabCh\*Fa, LabCh\*Fa, rgb\*Fa, LabCh\*Fa, DE\*Fa, hsi\_Md, rgb\*Md, LabCh\*Md. Contains 97 rows of color calibration data.

2-0031530-F0

TS810N-7N, 1618-F

delta E\*\* = 11.4

gráfico TS81; 4(ISO/IEC 15775 + ISO/IEC TR 24705)  
colores y diferencia en color,  $\Delta E^*$ , 3D=0, de=0, sRGB

entrada: rgb/cmyk -> rgb<sub>d</sub>  
salida: transferiera a rgb<sub>d</sub>

2-0031530-F0





vea archivos semejantes: <http://130.149.60.45/~farbmetrik/TS81/TS81.HTM>  
información técnica: <http://www.ps.bam.de> o <http://130.149.60.45/~farbmetrik>

Table with columns: n, HIC\*Fa, rgb\_Fa, icf\_Fa, hsi\_Fa, rgb\*Fa, LabCh\*Fa, LabCh\*Fa, DE\*Fa, hsi\_Md, rgb\*Md, LabCh\*Md. It contains a large grid of numerical data for various color and resolution settings.

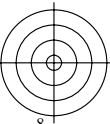
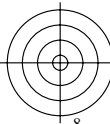
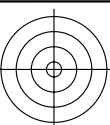
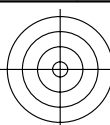
delta E\* = 1.6

gráfico TS81; 4(ISO/IEC 15775 + ISO/IEC TR 24705)  
colores y diferencia en color, ΔE\*, 3D=0, de=0, sRGB

entrada: rgb/cmyk -> rgbd  
salida: transfiera a rgbd

TUB matrícula: 20150701-TS81/TS81LONP.PDF /.PS  
aplicación para la medida de display output, ninguna separación

TUB material: code=rha4ta



vea archivos semejantes: <http://130.149.60.45/~farbmetrik/TS81/TS81.HTM>  
 información técnica: <http://www.ps.bam.de> o <http://130.149.60.45/~farbmetrik>

n	HIC*Fa	rgb_Fa	ief_Fa	hsi_Fa	rgb*Fa	LabCh*Fa	rgb*Fa	LabCh*Fa	DE*Fa	hsiMd	rgb*Md	LabCh*Md
1053	NW_086a	0.866 0.866 0.866	0.866 0.0 0.866	360	0.866 0.866 0.866	82.6 0.0 0.0	0.0 0.0 0.0	0.866 0.866 0.866	83.9 0.0 0.0	325.2 1.3	360	95.4 0.0 0.0
1054	NW_093a	0.933 0.933 0.933	0.933 0.0 0.933	360	0.933 0.933 0.933	89.0 0.0 0.0	0.0 0.0 0.0	0.933 0.933 0.933	89.7 0.0 0.0	325.2 0.6	360	95.4 0.0 0.0
1055	NW_100a	1.0 1.0 1.0	1.0 0.0 1.0	360	1.0 1.0 1.0	95.4 0.0 0.0	0.0 0.0 0.0	1.0 1.0 1.0	95.4 0.0 0.0	325.2 0.0	360	95.4 0.0 0.0
1056	NW_000a	0.0 0.0 0.0	0.0 0.0 0.0	360	0.0 0.0 0.0	0.0 0.0 0.0	0.0 0.0 0.0	0.0 0.0 0.0	0.0 0.0 0.0	0.0 0.0	360	95.4 0.0 0.0
1057	NW_006a	0.066 0.066 0.066	0.066 0.0 0.066	360	0.066 0.066 0.066	6.2 0.0 0.0	0.0 0.0 0.0	0.066 0.066 0.066	4.4 0.0 0.0	326.3 1.8	360	95.4 0.0 0.0
1058	NW_013a	0.133 0.133 0.133	0.133 0.0 0.133	360	0.133 0.133 0.133	12.6 0.0 0.0	0.0 0.0 0.0	0.133 0.133 0.133	12.0 0.0 0.0	325.6 0.6	360	95.4 0.0 0.0
1059	NW_020a	0.2 0.2 0.2	0.2 0.0 0.2	360	0.2 0.2 0.2	19.0 0.0 0.0	0.0 0.0 0.0	0.2 0.2 0.2	19.7 0.0 0.0	325.5 0.6	360	95.4 0.0 0.0
1060	NW_026a	0.266 0.266 0.266	0.266 0.0 0.266	360	0.266 0.266 0.266	25.3 0.0 0.0	0.0 0.0 0.0	0.266 0.266 0.266	27.0 0.0 0.0	325.4 1.6	360	95.4 0.0 0.0
1061	NW_033a	0.333 0.333 0.333	0.333 0.0 0.333	360	0.333 0.333 0.333	31.7 0.0 0.0	0.0 0.0 0.0	0.333 0.333 0.333	34.0 0.0 0.0	325.3 2.2	360	95.4 0.0 0.0
1062	NW_040a	0.4 0.4 0.4	0.4 0.0 0.4	360	0.4 0.4 0.4	38.1 0.0 0.0	0.0 0.0 0.0	0.4 0.4 0.4	40.8 0.0 0.0	325.3 2.6	360	95.4 0.0 0.0
1063	NW_046a	0.466 0.466 0.466	0.466 0.0 0.466	360	0.466 0.466 0.466	44.4 0.0 0.0	0.0 0.0 0.0	0.466 0.466 0.466	47.3 0.0 0.0	325.4 2.8	360	95.4 0.0 0.0
1064	NW_053a	0.533 0.533 0.533	0.533 0.0 0.533	360	0.533 0.533 0.533	50.8 0.0 0.0	0.0 0.0 0.0	0.533 0.533 0.533	53.7 0.0 0.0	325.3 2.9	360	95.4 0.0 0.0
1065	NW_060a	0.6 0.6 0.6	0.6 0.0 0.6	360	0.6 0.6 0.6	57.2 0.0 0.0	0.0 0.0 0.0	0.6 0.6 0.6	60.0 0.0 0.0	325.3 2.8	360	95.4 0.0 0.0
1066	NW_066a	0.666 0.666 0.666	0.666 0.0 0.666	360	0.666 0.666 0.666	63.5 0.0 0.0	0.0 0.0 0.0	0.666 0.666 0.666	66.1 0.0 0.0	325.2 2.6	360	95.4 0.0 0.0
1067	NW_073a	0.734 0.734 0.734	0.734 0.0 0.734	360	0.734 0.734 0.734	70.0 0.0 0.0	0.0 0.0 0.0	0.734 0.734 0.734	72.3 0.0 0.0	325.2 2.2	360	95.4 0.0 0.0
1068	NW_080a	0.8 0.8 0.8	0.8 0.0 0.8	360	0.8 0.8 0.8	76.3 0.0 0.0	0.0 0.0 0.0	0.8 0.8 0.8	78.1 0.0 0.0	325.2 1.8	360	95.4 0.0 0.0
1069	NW_086a	0.866 0.866 0.866	0.866 0.0 0.866	360	0.866 0.866 0.866	82.6 0.0 0.0	0.0 0.0 0.0	0.866 0.866 0.866	83.9 0.0 0.0	325.2 1.3	360	95.4 0.0 0.0
1070	NW_093a	0.933 0.933 0.933	0.933 0.0 0.933	360	0.933 0.933 0.933	89.0 0.0 0.0	0.0 0.0 0.0	0.933 0.933 0.933	89.7 0.0 0.0	325.2 0.6	360	95.4 0.0 0.0
1071	NW_100a	1.0 1.0 1.0	1.0 0.0 1.0	360	1.0 1.0 1.0	95.4 0.0 0.0	0.0 0.0 0.0	1.0 1.0 1.0	95.4 0.0 0.0	325.2 0.0	360	95.4 0.0 0.0
1072	NW_000a	0.0 0.0 0.0	0.0 0.0 0.0	360	0.0 0.0 0.0	0.0 0.0 0.0	0.0 0.0 0.0	0.0 0.0 0.0	0.0 0.0 0.0	0.0 0.0	360	95.4 0.0 0.0
1073	NW_100a	1.0 1.0 1.0	1.0 0.0 1.0	360	1.0 1.0 1.0	95.4 0.0 0.0	0.0 0.0 0.0	1.0 1.0 1.0	95.4 0.0 0.0	325.2 0.0	360	95.4 0.0 0.0
1074	R00Y_100_100a	1.0 0.0 0.0	1.0 1.0 0.5	390	1.0 0.0 0.0	50.4 76.9 64.5 100.4 40.0	0.0 0.0 0.0	1.0 0.0 0.0	50.4 76.9 64.5 100.4 39.9	0.0 0.0	389	50.4 76.9 64.5 100.4 40.0
1075	G50B_100_100a	0.0 1.0 1.0	1.0 1.0 0.5	210	0.0 1.0 1.0	86.8 -46.1 -13.5 48.1 196.3	0.0 1.0 1.0	0.0 1.0 1.0	86.8 -46.1 -13.5 48.1 196.3	0.0 0.0	210	86.8 -46.1 -13.5 48.1 196.3
1076	Y00G_100_100a	1.0 1.0 0.0	1.0 1.0 0.5	90	1.0 1.0 0.0	92.6 -20.7 90.7 93.0 102.8	1.0 1.0 0.0	0.0 1.0 0.0	92.6 -20.6 90.7 93.0 102.8	0.0 0.0	89	92.6 -20.7 90.7 93.0 102.8
1077	B00R_100_100a	0.0 0.0 1.0	1.0 1.0 0.5	270	0.0 0.0 1.0	30.3 76.0 -103.5 128.5 306.2	0.0 0.0 1.0	0.0 1.0 0.0	30.3 76.0 -103.5 128.5 306.2	0.0 0.0	270	30.3 76.0 -103.5 128.5 306.2
1078	G00B_100_100a	0.0 1.0 0.0	1.0 1.0 0.5	150	0.0 1.0 0.0	83.6 -82.7 79.8 115.0 136.0	0.0 1.0 0.0	0.0 1.0 0.0	83.6 -82.7 79.8 115.0 136.0	0.0 0.0	149	83.6 -82.7 79.8 115.0 136.0
1079	B50R_100_100a	1.0 0.0 1.0	1.0 1.0 0.5	330	1.0 0.0 1.0	57.2 94.3 -58.4 110.9 328.2	1.0 0.0 1.0	0.0 1.0 0.0	57.2 94.3 -58.4 111.0 328.2	0.0 0.0	330	57.2 94.3 -58.4 110.9 328.2

delta E\* = 1.0

TUB matrícula: 20150701-TS81/TS81L0NP.PDF /.PS  
 aplicación para la medida de display output, ninguna separación  
 TUB material: code=rh4ta

