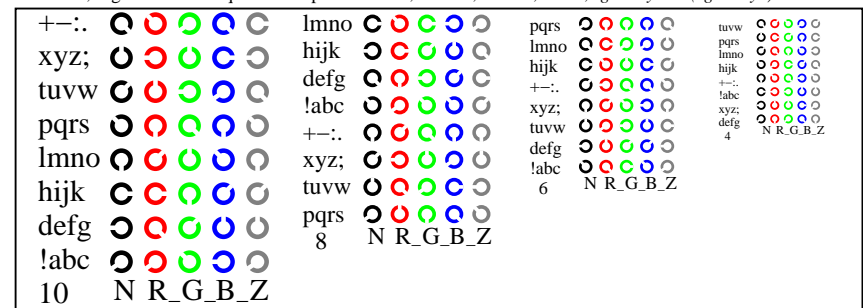
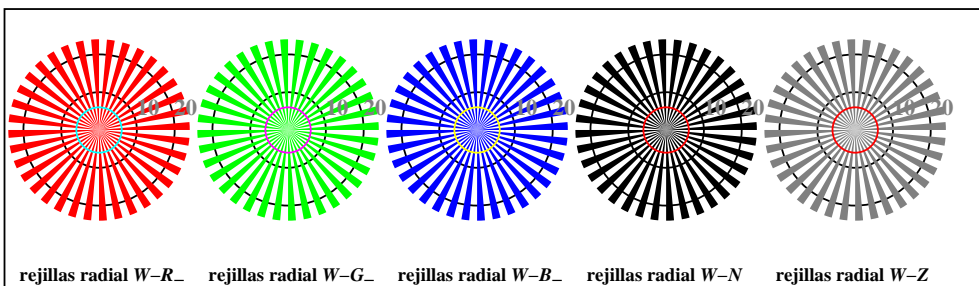


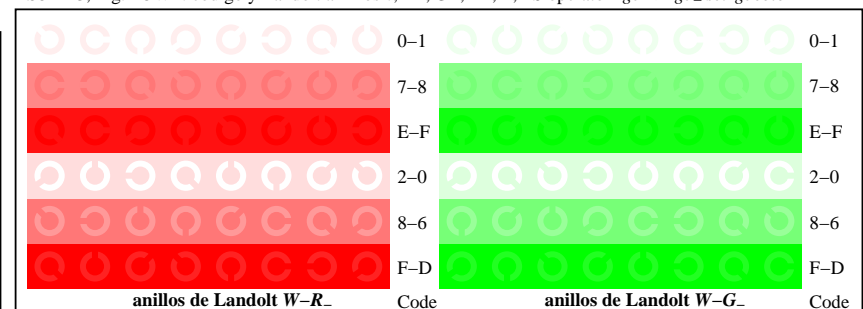
TS811-1, Fig. D4W-: 16 equidistante pasos W-R; W-G; W-B; W-N; *rgb/cmy0 set(rgb/cmyk)color*



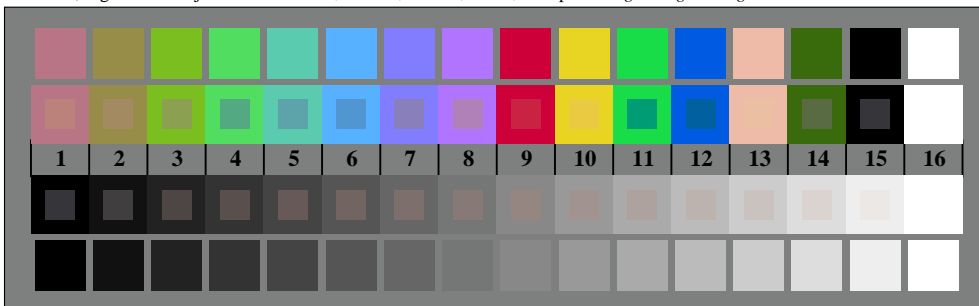
TS811-3, Fig. D5W-: código y Landolt anillosN; R; G; B; Z; *PS operator rgb->rgb\_setrgbcolor*



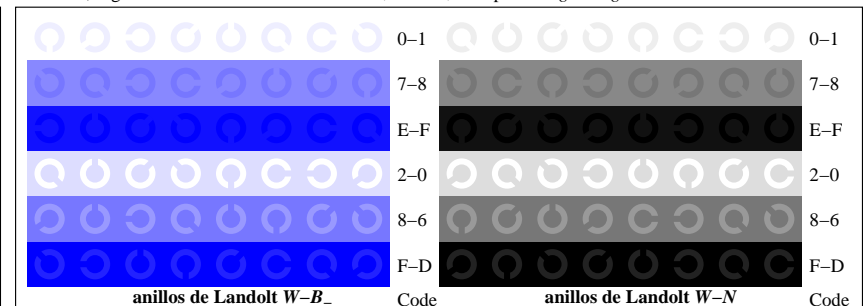
TS810-5, Fig. D2W-: rejillas radial W-R; W-G; W-B; W-N; *PS operator rgb->rgb\_setrgbcolor*



TS811-5, Fig. D6W-: anillos de Landolt W-R; W-G; *PS operator rgb\_setrgbcolor*



TS810-7, Fig. D3W-: CIE 14 colores del test y 2 + 16 pasos de gris (sf); *rgb/cmy0 set(rgb/cmyk)color*



TS811-7, Fig. D7W-: anillos de Landolt W-B; W-N; *PS operator rgb\_setrgbcolor*