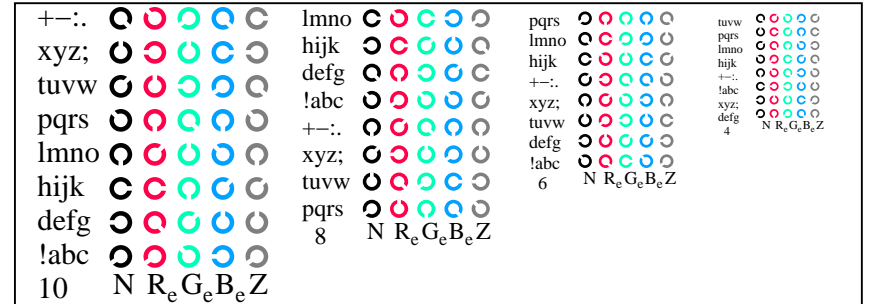
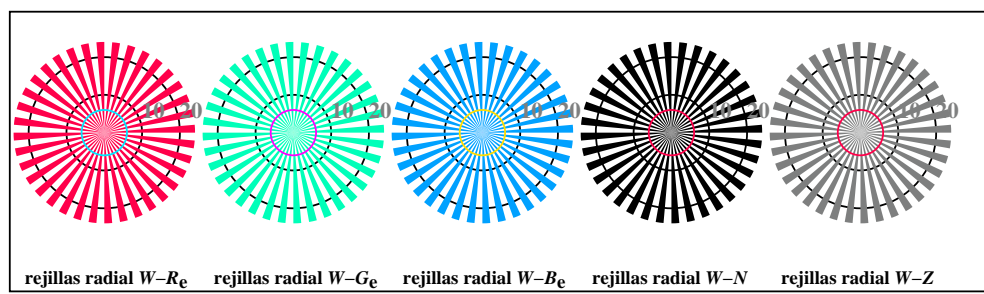


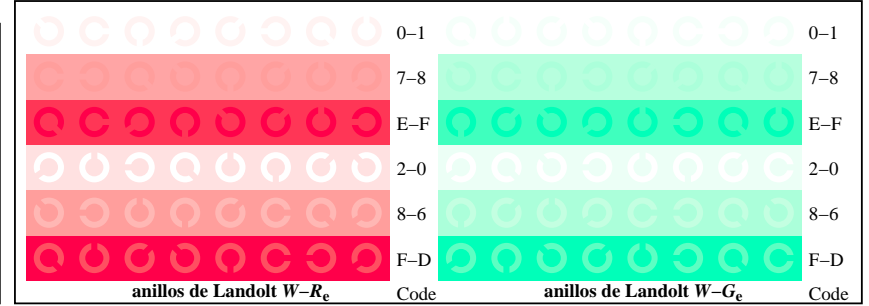
TS811-1, Fig. D4Wde: 16 equidistante pasos  $W-R_e$ ;  $W-G_e$ ;  $W-B_e$ ;  $W-N$ ;  $rgb/cmy0 \rightarrow rgb_{de}$  *setrgbcolor*



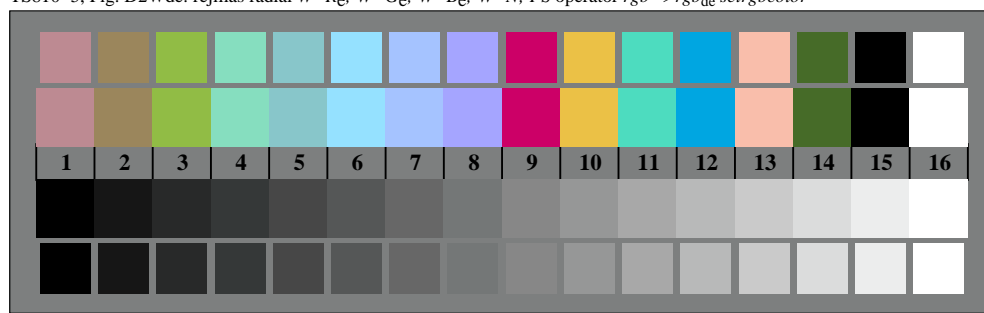
TS811-3, Fig. D5Wde: codigo y Landolt anillos  $N$ ;  $R_e$ ;  $G_e$ ;  $B_e$ ;  $Z$ ; PS operator  $rgb \rightarrow rgb_{de}$  *setrgbcolor*



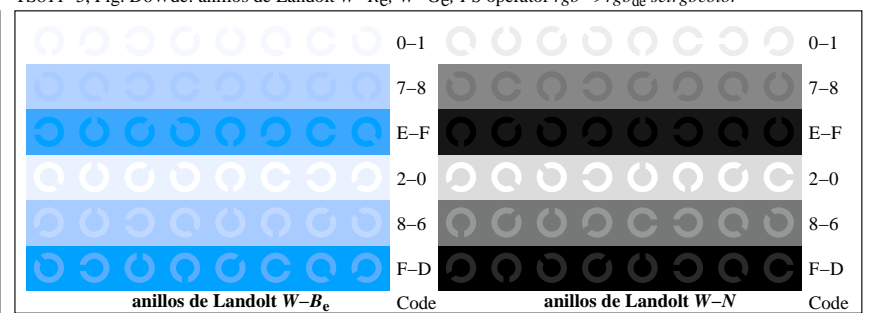
TS810-5, Fig. D2Wde: rejillas radial  $W-R_e$ ;  $W-G_e$ ;  $W-B_e$ ;  $W-N$ ; PS operator  $rgb \rightarrow rgb_{de}$  *setrgbcolor*



TS811-5, Fig. D6Wde: anillos de Landolt  $W-R_e$ ;  $W-G_e$ ; PS operator  $rgb \rightarrow rgb_{de}$  *setrgbcolor*



TS810-7, Fig. D3Wde: CIE 14 colores del test y 2 + 16 pasos de gris (sf);  $rgb/cmy0 \rightarrow rgb_{de}$  *setrgbcolor*



TS811-7, Fig. D7Wde: anillos de Landolt  $W-B_e$ ;  $W-N$ ; PS operator  $rgb \rightarrow rgb_{de}$  *setrgbcolor*