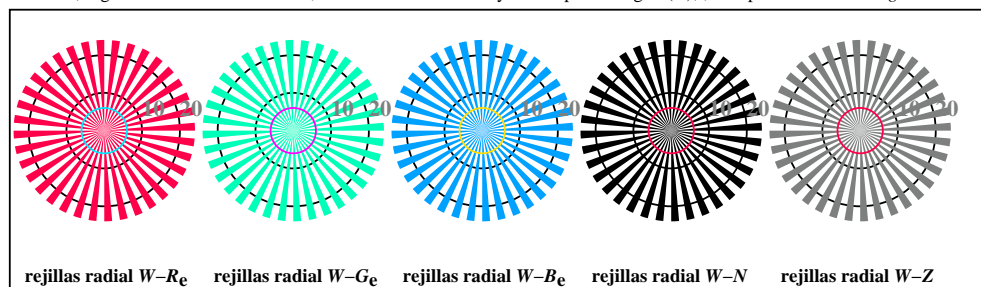
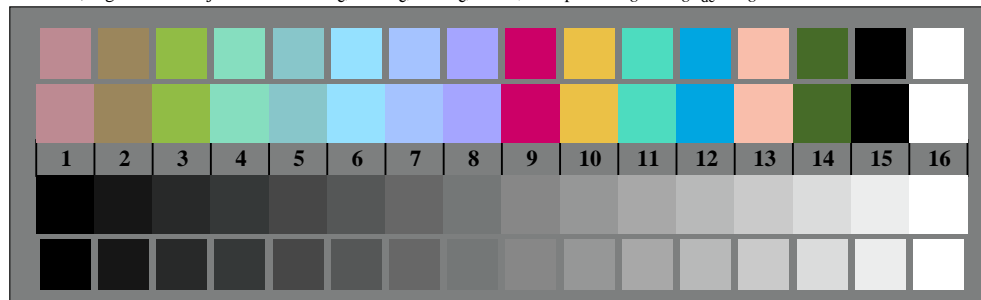




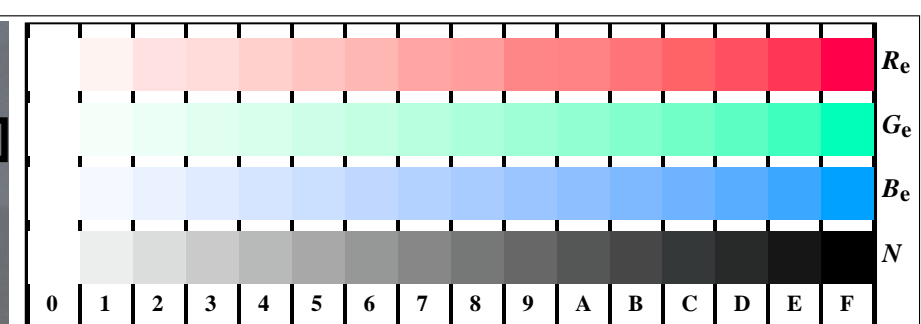
TS800-3, Fig. D1Wde: motivos florales, CIE 14 colores del test y 2 + 16 pasos de gris (sf); ; PS operator 3 colorimage



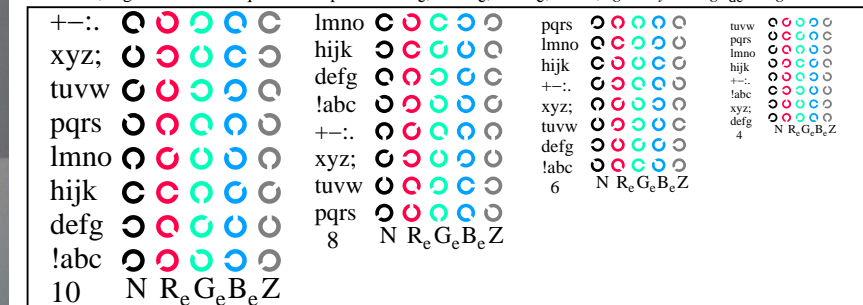
TS800-5, Fig. D2Wde: rejillas radial W-Re; W-Ge; W-Be; W-N; PS operator rgb->rgb_{de} setrgbcolor



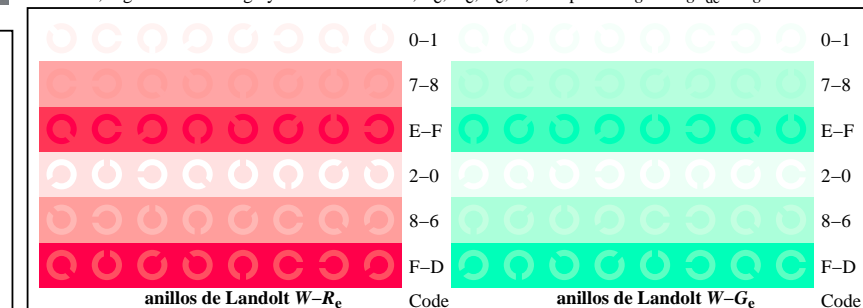
TS800-7, Fig. D3Wde: CIE 14 colores del test y 2 + 16 pasos de gris (sf); rgb/cmy0->rgb_{de} setrgbcolor



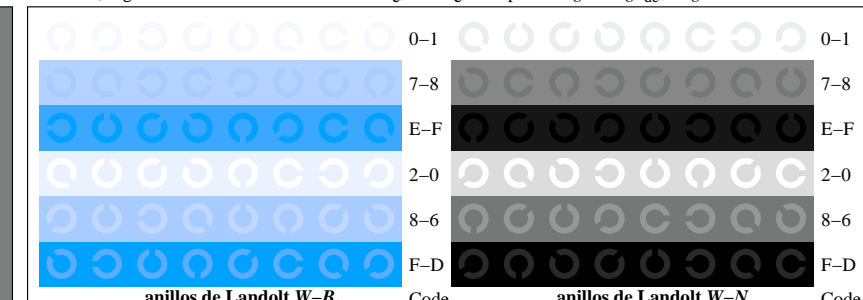
TS801-1, Fig. D4Wde: 16 equidistante pasos W-Re; W-Ge; W-Be; W-N; rgb/cmy0->rgb_{de} setrgbcolor



TS801-3, Fig. D5Wde: codigo y Landolt anillosN; Re; Ge; Be; Z; PS operator rgb->rgb_{de} setrgbcolor



TS801-5, Fig. D6Wde: anillos de Landolt W-Re; W-Ge; PS operator rgb->rgb_{de} setrgbcolor



TS801-7, Fig. D7Wde: anillos de Landolt W-Be; W-N; PS operator rgb->rgb_{de} setrgbcolor