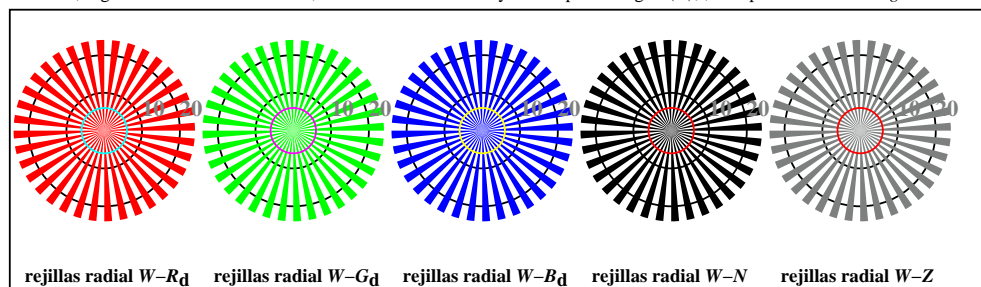
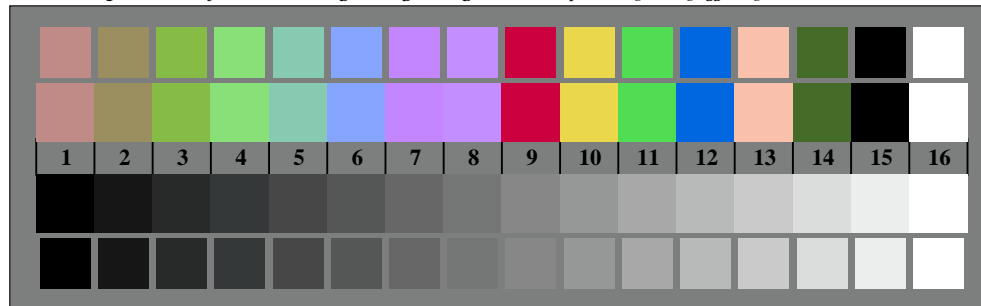




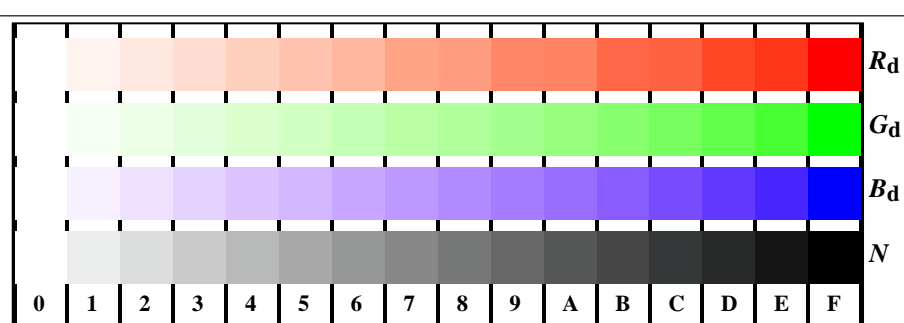
TS800-3, Fig. D1Wdd: motivos florales, CIE 14 colores del test y 2 + 16 pasos de gris (sf); ; PS operator 3 *colorimage*



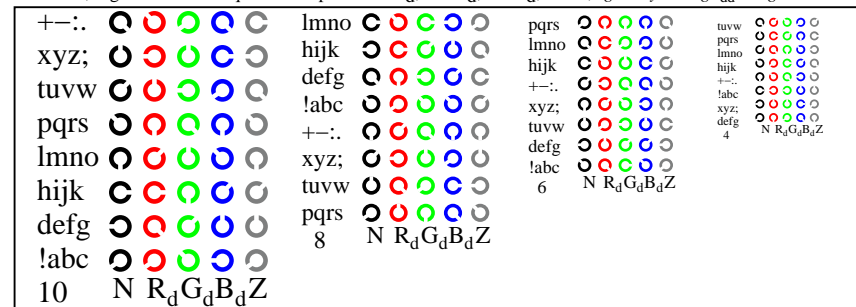
TS800-5, Fig. D2Wdd: rejillas radial $W-R_d$; $W-G_d$; $W-B_d$; $W-N$; $W-Z$; PS operator *rgb*->*rgb_{dd}* *setrgbcolor*



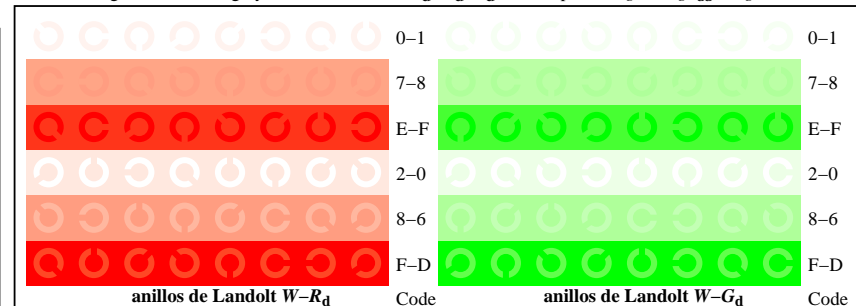
TS800-7, Fig. D3Wdd: CIE 14 colores del test y 2 + 16 pasos de gris (sf); *rgb/cmy0*->*rgb_{dd}* *setrgbcolor*



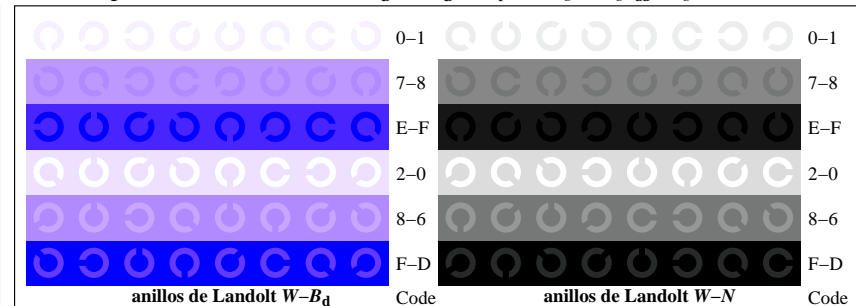
TS801-1, Fig. D4Wdd: 16 equidistante pasos $W-R_d$; $W-G_d$; $W-B_d$; $W-N$; *rgb/cmy0*->*rgb_{dd}* *setrgbcolor*



TS801-3, Fig. D5Wdd: código y Landolt anillos N ; R_d ; G_d ; B_d ; Z ; PS operator *rgb*->*rgb_{dd}* *setrgbcolor*



TS801-5, Fig. D6Wdd: anillos de Landolt $W-R_d$; $W-G_d$; PS operator *rgb*->*rgb_{dd}* *setrgbcolor*



TS801-7, Fig. D7Wdd: anillos de Landolt $W-B_d$; $W-N$; PS operator *rgb*->*rgb_{dd}* *setrgbcolor*