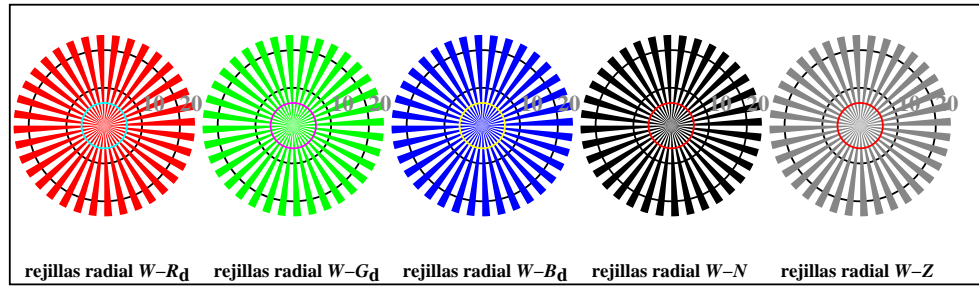
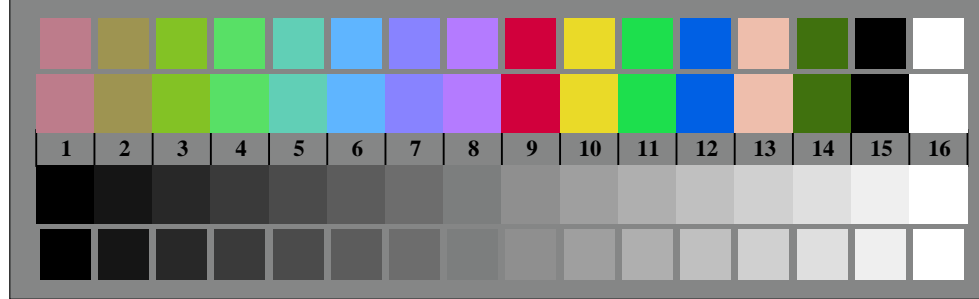




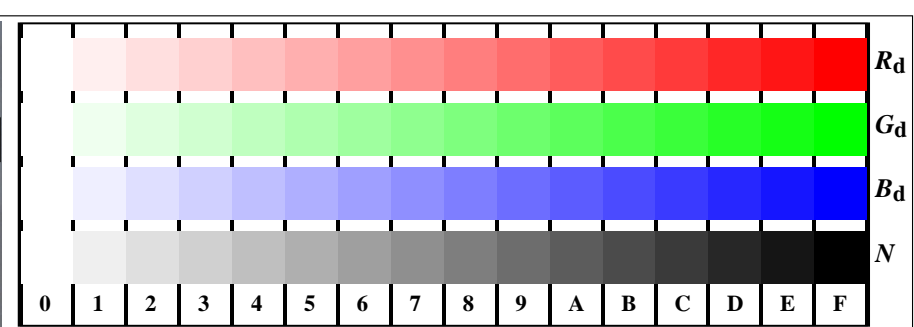
TS800-3, Fig. D1Wd: motivos florales, CIE 14 colores del test y 2 + 16 pasos de gris (sf); PS operator 3 colorimage



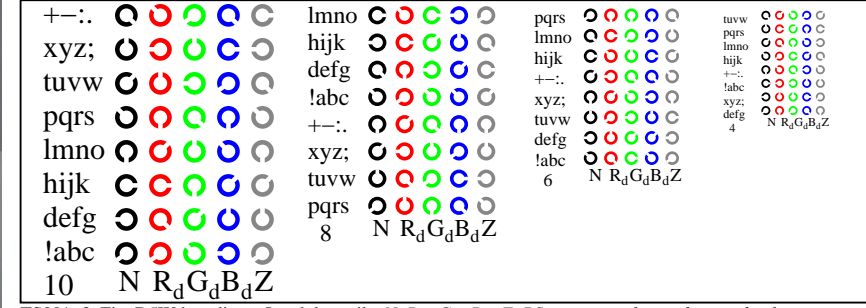
TS800-5, Fig. D2Wd: rejillas radial $W-R_d$; $W-G_d$; $W-B_d$; $W-N$; PS operator $rgb \rightarrow rgb_d$ setrgbcolor



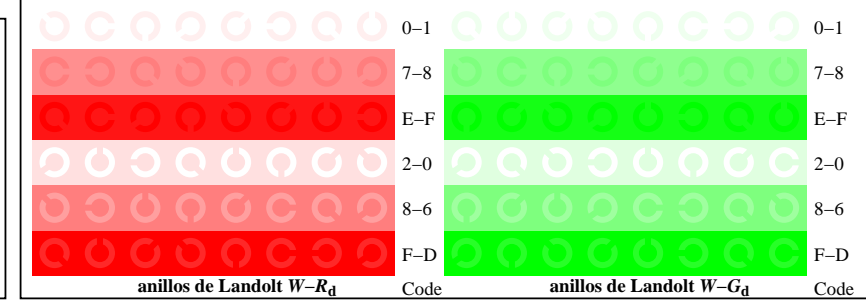
TS800-7, Fig. D3Wd: CIE 14 colores del test y 2 + 16 pasos de gris (sf); $rgb/cmy0 \rightarrow rgb_d$ setrgbcolor



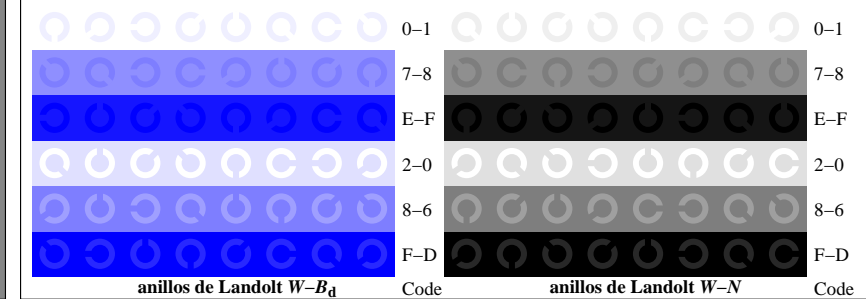
TS801-1, Fig. D4Wd: 16 equidistante pasos $W-R_d$; $W-G_d$; $W-B_d$; $W-N$; $rgb/cmy0 \rightarrow rgb_d$ setrgbcolor



TS801-3, Fig. D5Wd: codigo y Landolt anillos N ; R_d ; G_d ; B_d ; Z ; PS operator $rgb \rightarrow rgb_d$ setrgbcolor



TS801-5, Fig. D6Wd: anillos de Landolt $W-R_d$; $W-G_d$; PS operator $rgb \rightarrow rgb_d$ setrgbcolor



TS801-7, Fig. D7Wd: anillos de Landolt $W-B_d$; $W-N$; PS operator $rgb \rightarrow rgb_d$ setrgbcolor