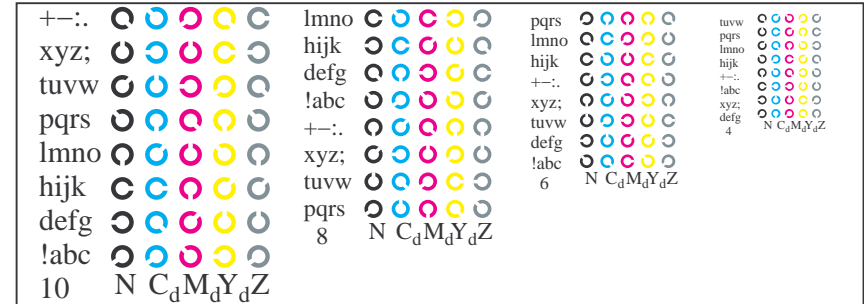
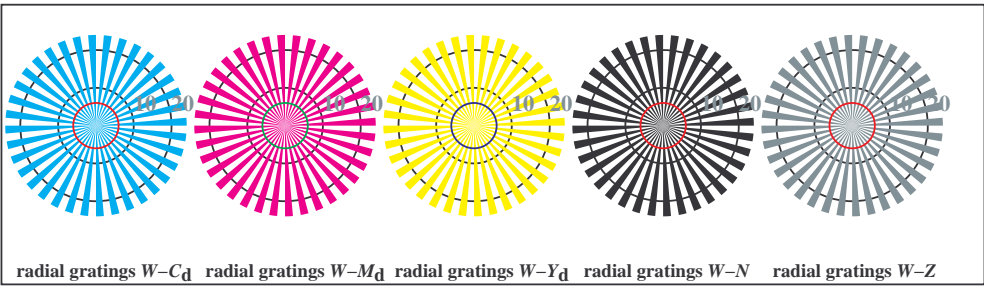


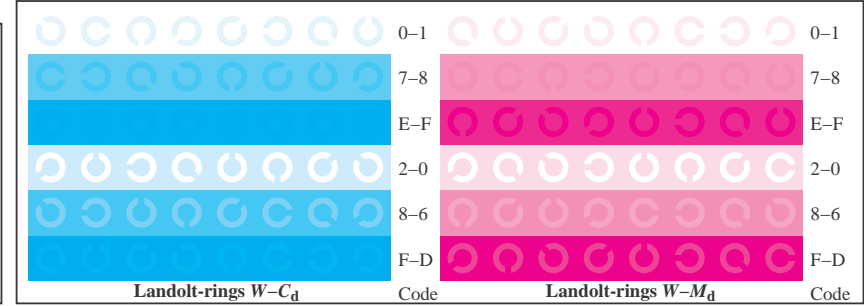
TN981-1, Picture B4Wdd: 16 equidistant steps  $W-C_d$ ;  $W-M_d$ ;  $W-Y_d$ ;  $W-N$ ;  $rgb/cmy0 \rightarrow rgb_{dd}$  *setrgbcolor*



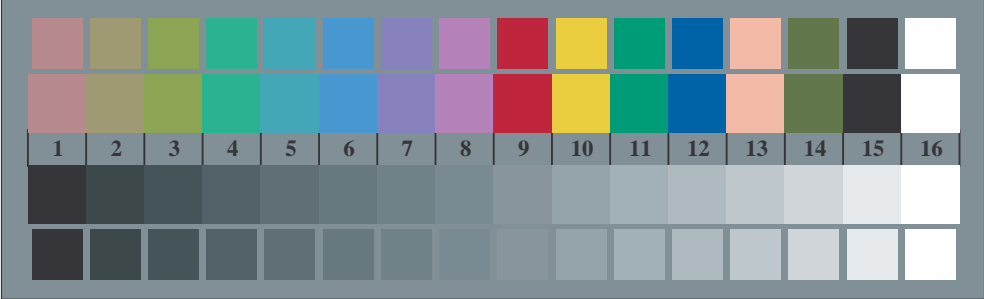
TN981-3, Picture B5Wdd: Script Landolt-rings  $N$ ;  $C_d$ ;  $M_d$ ;  $Y_d$ ;  $Z$ ; *PS operator: rgb \rightarrow rgb\_{dd}* *setrgbcolor*



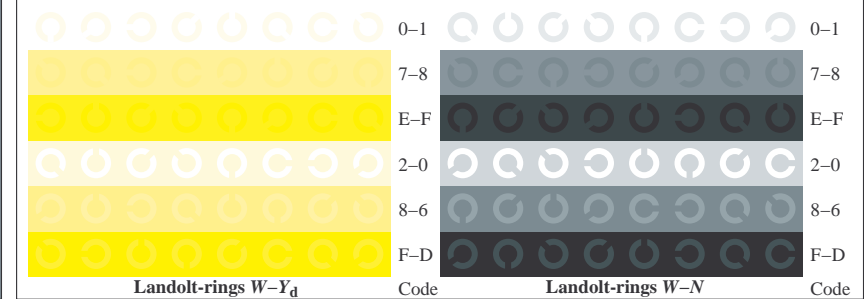
TN980-5, Picture B2Wdd: radial gratings  $W-C_d$ ;  $W-M_d$ ;  $W-Y_d$ ;  $W-N$ ; *PS operator: rgb \rightarrow rgb\_{dd}* *setrgbcolor*



TN981-5, Picture B6Wdd: Landolt-rings  $W-C_d$ ;  $W-M_d$ ; *PS operator: rgb \rightarrow rgb\_{dd}* *setrgbcolor*



TN980-7, Picture B3Wdd: 14 CIE-test colours and 2 + 16 grey steps (sf); *PS operator: rgb/cmy0 \rightarrow rgb\_{dd}* *setrgbcolor*



TN981-7, Picture B7Wdd: Landolt-rings  $W-Y_d$ ;  $W-N$ ; *PS operator: rgb \rightarrow rgb\_{dd}* *setrgbcolor*