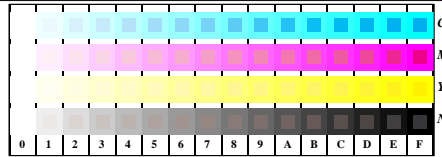


http://130.149.60.45/~farbmetrik/TN95/TN95L0N1.TXT / .PS; start output
N: ingen 3D-linearisering (OL) i fil (F) eller PS-startup (S), side 1/1

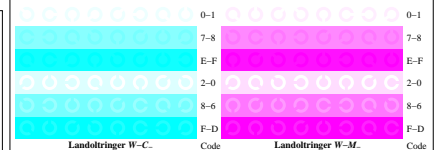
se liknende filer: http://130.149.60.45/~farbmetrik/TN95/TN95.HTM
teknisk informasjon: http://www.ps.bam.de eller http://130.149.60.45/~farbmetrik



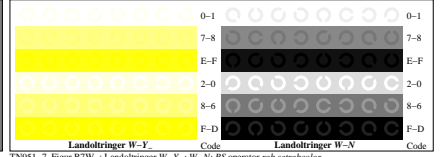
TN951-1, Figur B4W--: 16 ekvidistante trinn W-C., W-M., W-Y.; W-N; rgb/cmy0 sett rgb/cmykcolor

+-:				lmno				pqrs									
xyz;				hijk				hijk									
tuvw				defg				+-:									
pqrs				lmno				xyz;									
hijk				tuvw				+-:									
defg				lmno				tuvw									
lmno				tuvw				defg									
hijk				lmno				lmno									
defg				tuvw				+-:									
labc				lmno				xyz;									
10				tuvw				+-:									
				lmno				xyz;									
				tuvw				+-:									
				lmno				xyz;									
				tuvw				+-:									
				lmno				xyz;									
				tuvw				+-:									
				lmno				xyz;									
				tuvw				+-:									
				lmno				xyz;									
				tuvw				+-:									
				lmno				xyz;									
				tuvw				+-:									
				lmno				xyz;									
				tuvw				+-:									

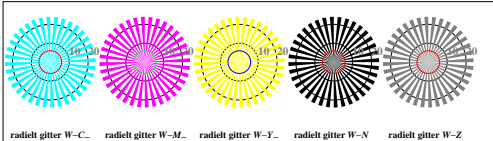
TN951-3, Figur B5W--: Skrift Landoltringer N; C.; M.; Y.; Z; PS operator rgb->rgb_setrgbcolor



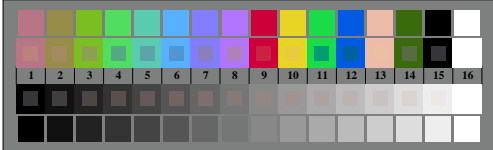
TN951-5, Figur B6W--: Landoltringer W-C.; W-M.; PS operator rgb_setrgbcolor



TN951-7, Figur B7W--: Landoltringer W-Y.; W-N; PS operator rgb_setrgbcolor



TN950-5, Figur B2W--: radielt gitter W-C.; W-M.; W-Y.; W-N; PS operator rgb->rgb_setrgbcolor



TN950-7, Figur B3W--: 14 CIE-prøvefarger og 2 + 16 gråtrinns (sf); rgb/cmy0 sett/rgb/cmykcolor

prøveplansje TN95; 2(ISO/IEC 15775 + ISO/IEC TR 24705)input: rgb/cmyk -> w/rgb/cmyk-
kromatisk prøveplansje CMY output: ingen endring

