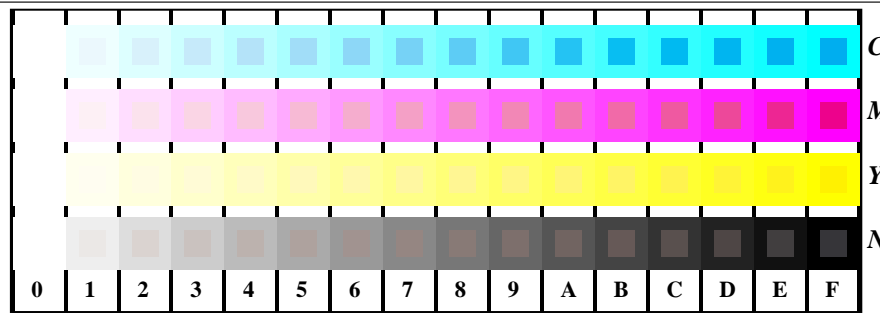


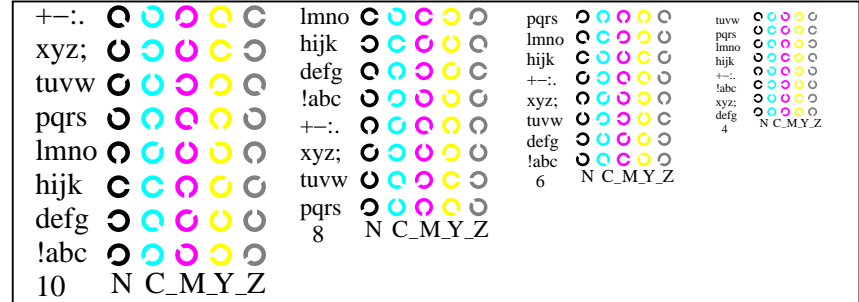
se lignende filer: <http://130.149.60.45/~farbmetrik/TN95/TN95L0FA.TXT> /PS
teknisk informasjon: <http://www.ps.bam.de> eller <http://130.149.60.45/~farbmetrik>

TUB registrering: 20150701-TN95/TN95L0FA.TXT /.PS
anvendelse for måling av offsettrykk output

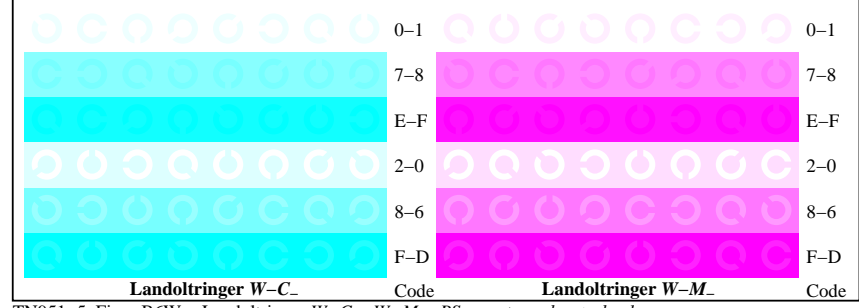
TUB-material: code=rh4ta



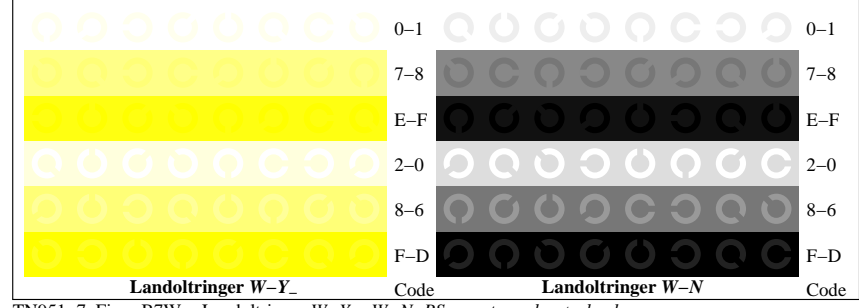
TN951-1, Figur B4W-: 16 ekvidistante trinn W-C₋; W-M₋; W-Y₋; W-N; rgb/cmy0 set(rgb/cmyk)color



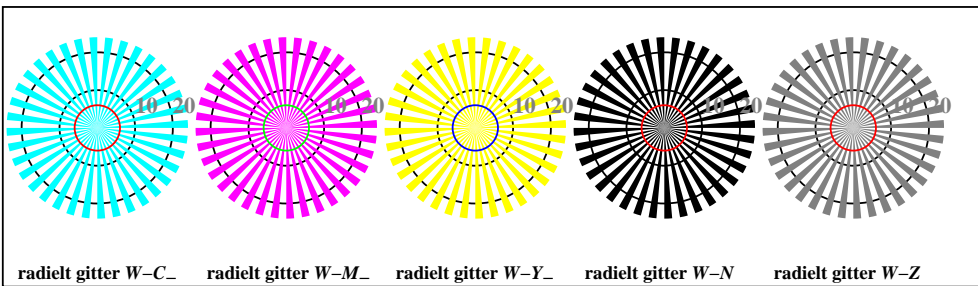
TN951-3, Figur B5W-: Skrift Landoltringer N; C₋; M₋; Y₋; Z; PS operator rgb->rgb_setrgbcolor



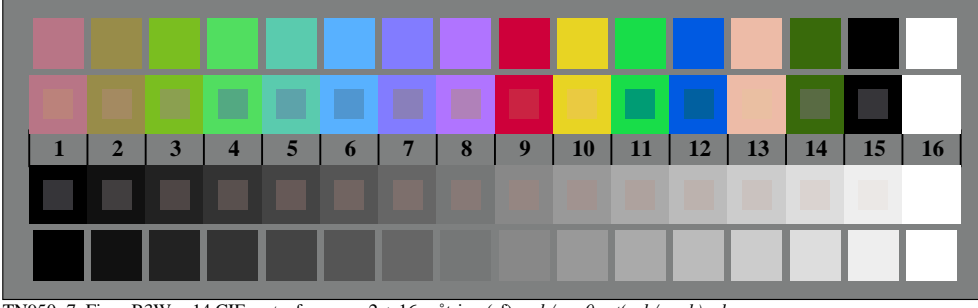
TN951-5, Figur B6W-: Landoltringer W-C₋; W-M₋; PS operator rgb setrgbcolor



TN951-7, Figur B7W-: Landoltringer W-Y₋; W-N; PS operator rgb setrgbcolor



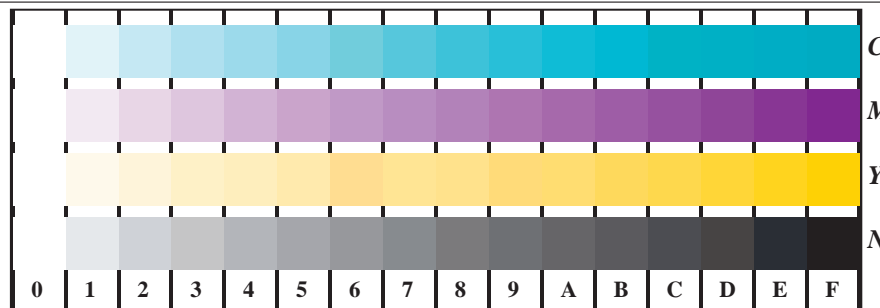
TN950-5, Figur B2W-: radielt gitter W-C₋; W-M₋; W-Y₋; W-N; PS operator rgb->rgb_setrgbcolor



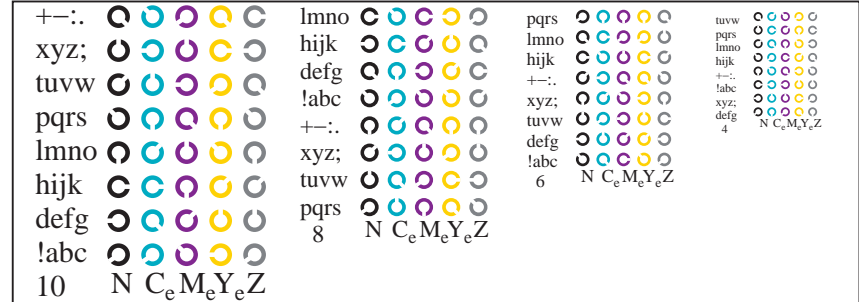
TN950-7, Figur B3W-: 14 CIE-prøvefarger og 2 + 16 gråtrinn (sf); rgb/cmy0 set(rgb/cmyk)color

se lignende filer: <http://130.149.60.45/~farbmetrik/TN95/TN95.HTM>
teknisk informasjon: <http://www.ps.bam.de> eller <http://130.149.60.45/~farbmetrik>

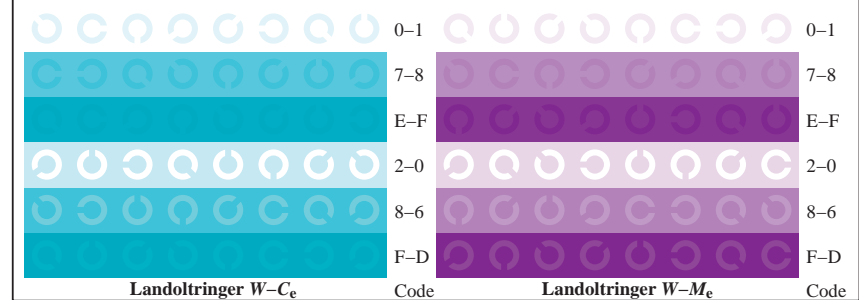
TUB registrering: 20150701-TN95/TN95L0FA.TXT /PS
anvendelse for måling av offsettrykk output, separasjoncmyk* (CMYK)
TUB-material: code=rh4ta



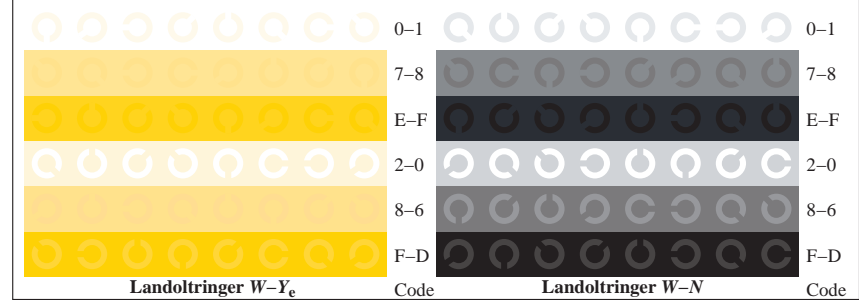
TN951-1, Figur B4Wde: 16 ekvidistante trinn W-Ce; W-Me; W-Ye; W-N; rgb/cmy0->rgbde setrgbcolor



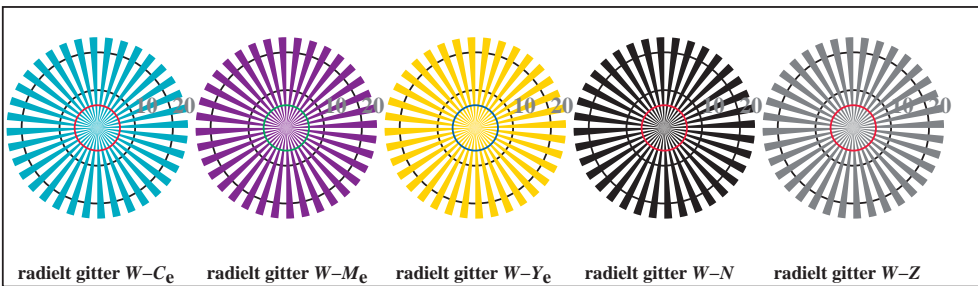
TN951-3, Figur B5Wde: Skrift Landoltringer N; Ce; Me; Ye; Z; PS operator rgb->rgbde setrgbcolor



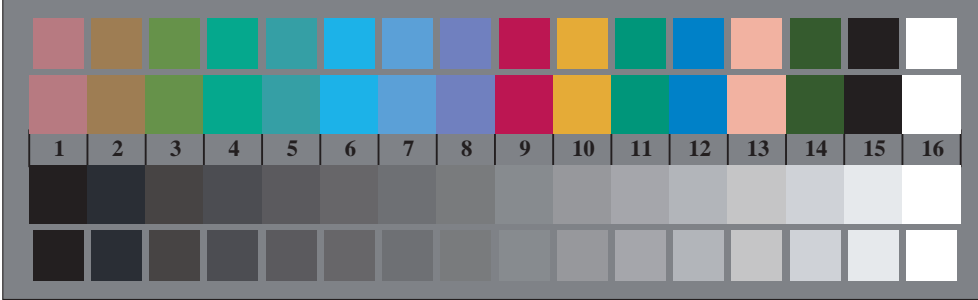
TN951-5, Figur B6Wde: Landoltringer W-Ce; W-Me; PS operator rgb->rgbde setrgbcolor



TN951-7, Figur B7Wde: Landoltringer W-Ye; W-N; PS operator rgb->rgbde setrgbcolor



TN950-5, Figur B2Wde: radielt gitter W-Ce; W-Me; W-Ye; W-N; PS operator rgb->rgbde setrgbcolor

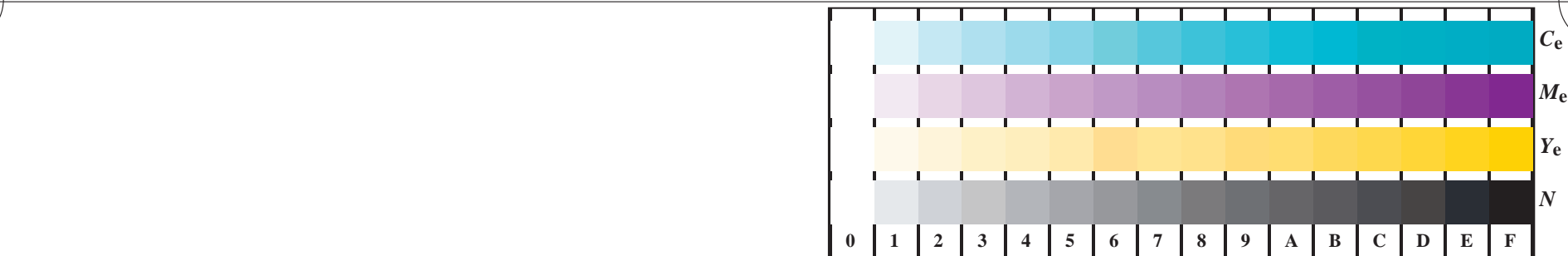


TN950-7, Figur B3Wde: 14 CIE-prøvefarger og 2 + 16 gråtrinn (sf); rgb/cmy0->rgbde setrgbcolor

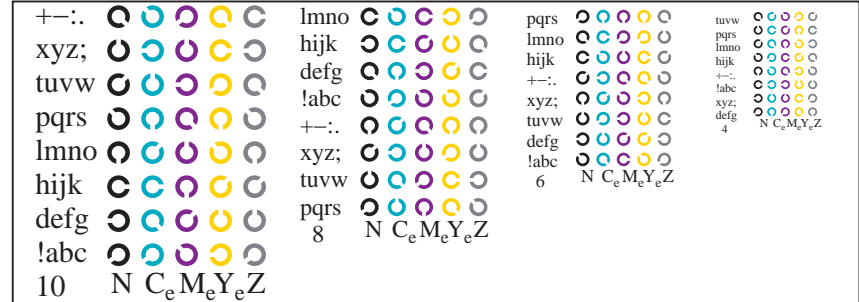


se lignende filer: <http://130.149.60.45/~farbmetrik/TN95/TN95.HTM>
 teknisk informasjon: <http://www.ps.bam.de> eller <http://130.149.60.45/~farbmetrik>

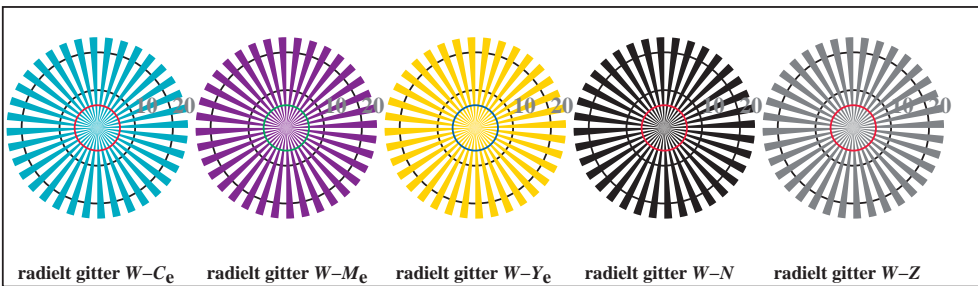
TUB registrering: 20150701-TN95/TN95L0FA.TXT /.PS
 anvendelse for måling av offsettrykk output, separasjoncmyk* (CMYK)
 TUB-material: code=rh4ta



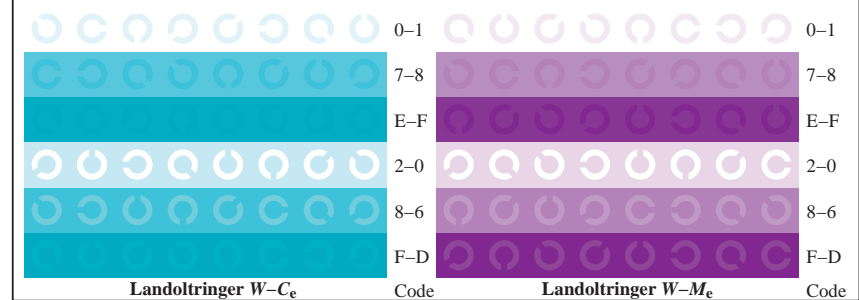
TN951-1, Figur B4Wde: 16 ekvidistante trinn $W-C_e$; $W-M_e$; $W-Y_e$; $W-N$; $rgb/cmy0 \rightarrow rgb_{de}$ setrgbcolor



TN951-3, Figur B5Wde: Skrift Landoltringer N ; C_e ; M_e ; Y_e ; Z ; PS operator $rgb \rightarrow rgb_{de}$ setrgbcolor



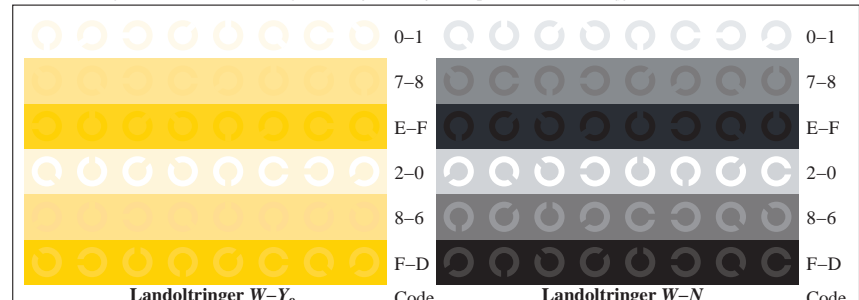
TN950-5, Figur B2Wde: radielt gitter $W-C_e$; $W-M_e$; $W-Y_e$; $W-N$; PS operator $rgb \rightarrow rgb_{de}$ setrgbcolor



TN951-5, Figur B6Wde: Landoltringer $W-C_e$; $W-M_e$; PS operator $rgb \rightarrow rgb_{de}$ setrgbcolor



TN950-7, Figur B3Wde: 14 CIE-prøvefarger og 2 + 16 gråtrinn (sf); $rgb/cmy0 \rightarrow rgb_{de}$ setrgbcolor



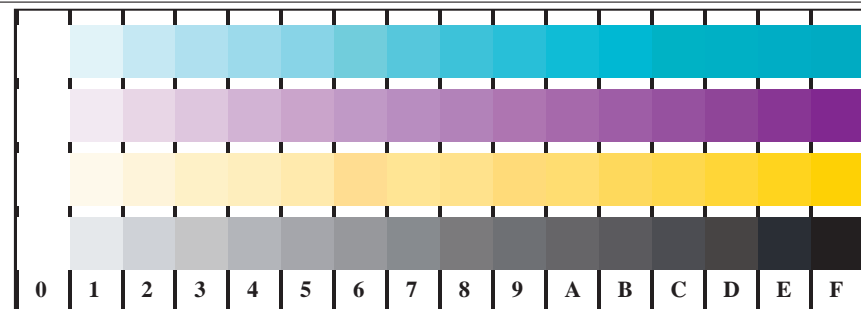
TN951-7, Figur B7Wde: Landoltringer $W-Y_e$; $W-N$; PS operator $rgb \rightarrow rgb_{de}$ setrgbcolor



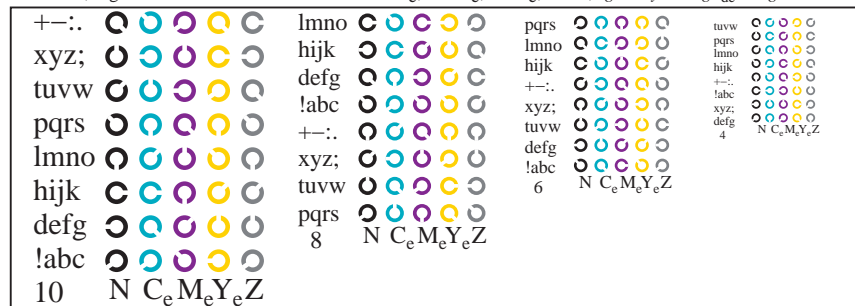
se lignende filer: <http://130.149.60.45/~farbmetrik/TN95/TN95.HTM>
 teknisk informasjon: <http://www.ps.bam.de> eller <http://130.149.60.45/~farbmetrik>

TUB registrering: 20150701-TN95/TN95L0FA.TXT /.PS
 anvendelse for måling av offsettrykk output, separasjoncmyk* (CMYK)

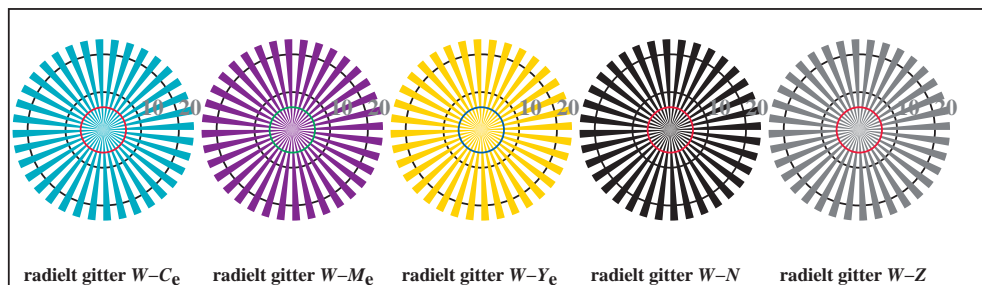
TUB-material: code=rh4ta



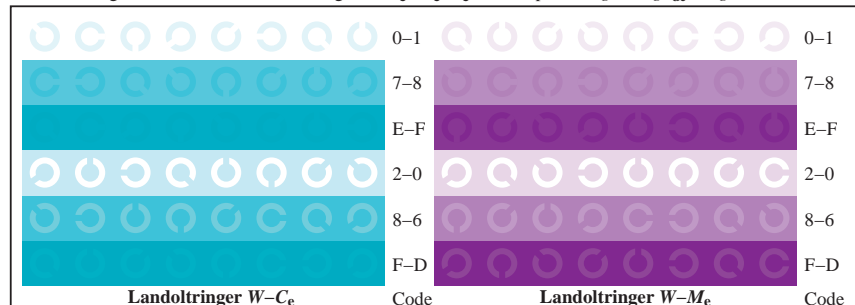
TN951-1, Figur B4Wde: 16 ekvidistante trinn $W-C_e$; $W-M_e$; $W-Y_e$; $W-N$; $rgb/cmy0 \rightarrow rgb_{de}$ setrgbcolor



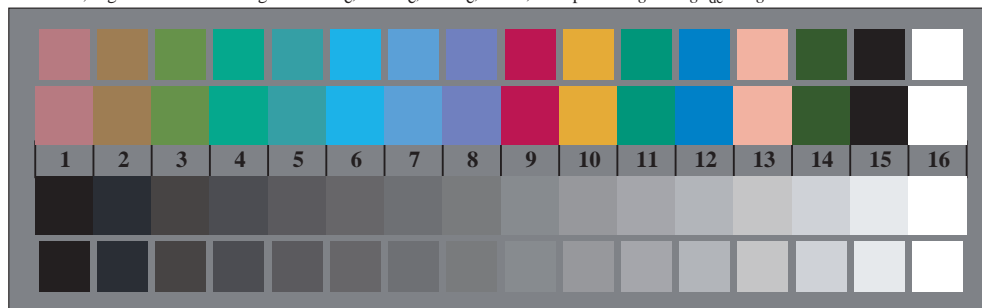
TN951-3, Figur B5Wde: Skrift Landoltringer N ; C_e ; M_e ; Y_e ; Z ; PS operator $rgb \rightarrow rgb_{de}$ setrgbcolor



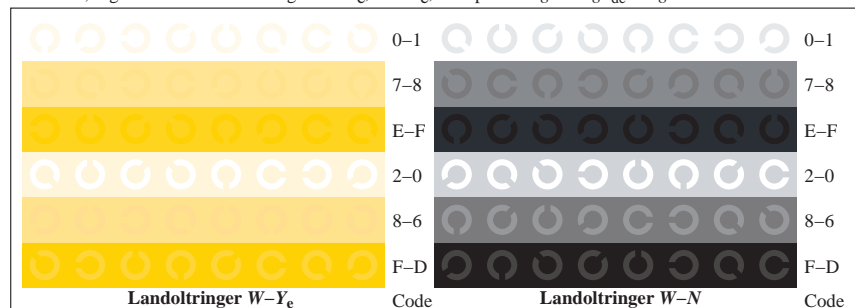
TN950-5, Figur B2Wde: radielt gitter $W-C_e$; $W-M_e$; $W-Y_e$; $W-N$; PS operator $rgb \rightarrow rgb_{de}$ setrgbcolor



TN951-5, Figur B6Wde: Landoltringer $W-C_e$; $W-M_e$; PS operator $rgb \rightarrow rgb_{de}$ setrgbcolor



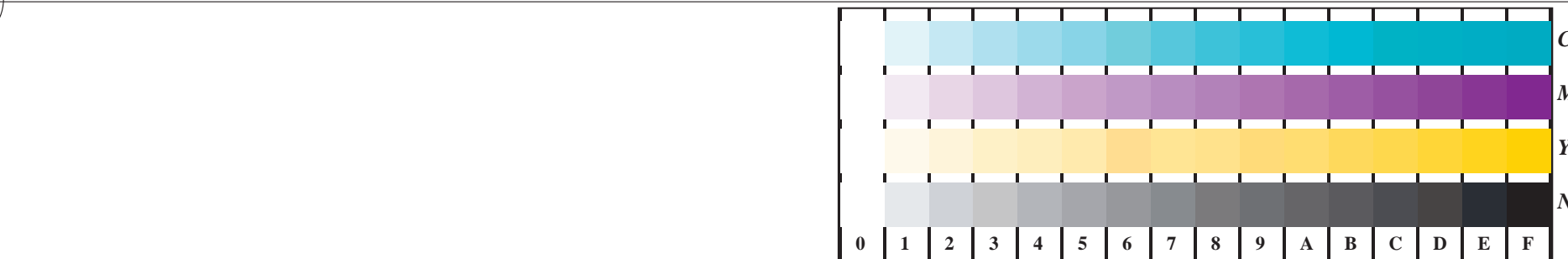
TN950-7, Figur B3Wde: 14 CIE-prøvefarger og 2 + 16 gråtrinn (sf); $rgb/cmy0 \rightarrow rgb_{de}$ setrgbcolor



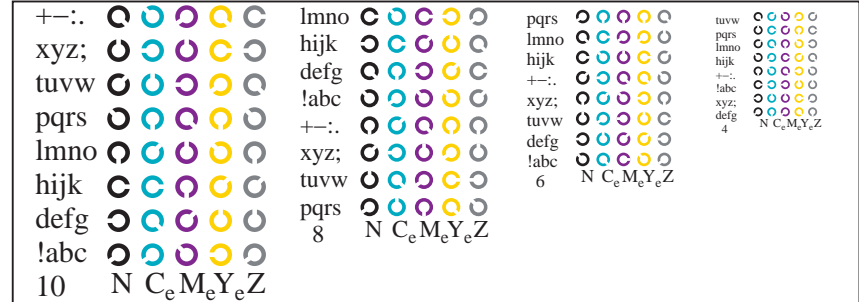
TN951-7, Figur B7Wde: Landoltringer $W-Y_e$; $W-N$; PS operator $rgb \rightarrow rgb_{de}$ setrgbcolor

se lignende filer: <http://130.149.60.45/~farbmetrik/TN95/TN95.HTM>
 teknisk informasjon: <http://www.ps.bam.de> eller <http://130.149.60.45/~farbmetrik>

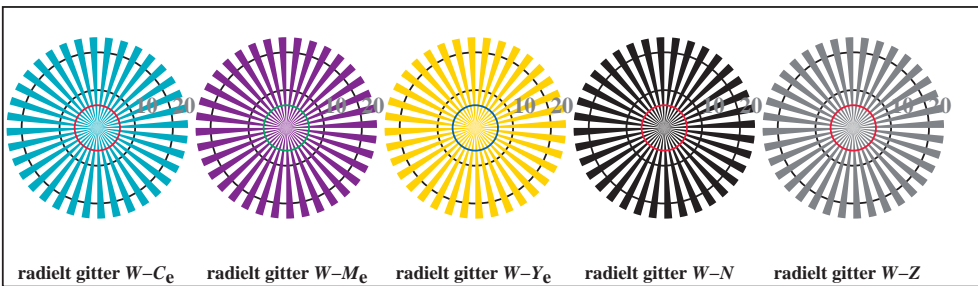
TUB registrering: 20150701-TN95/TN95L0FA.TXT /.PS
 anvendelse for måling av offsettrykk output, separasjoncmyk* (CMYK)
 TUB-material: code=rh4ta



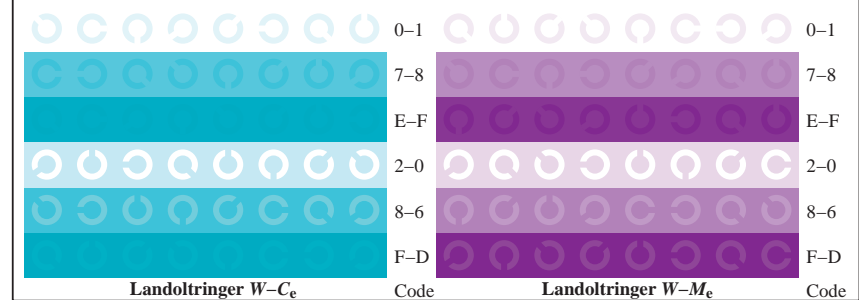
TN951-1, Figur B4Wde: 16 ekvidistante trinn $W-C_e$; $W-M_e$; $W-Y_e$; $W-N$; $rgb/cmy0 \rightarrow rgb_{de}$ setrgbcolor



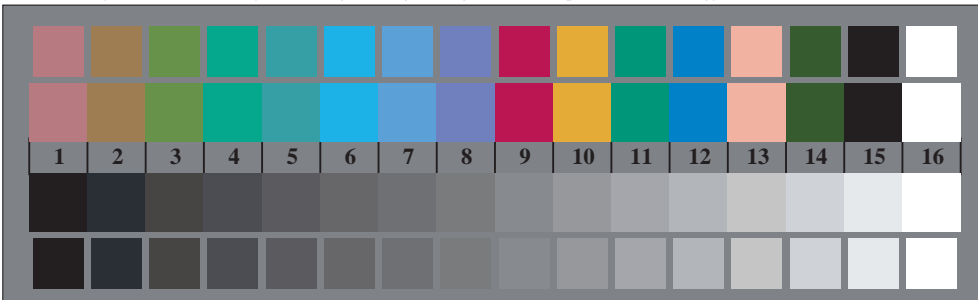
TN951-3, Figur B5Wde: Skrift Landoltringer N ; C_e ; M_e ; Y_e ; Z ; PS operator $rgb \rightarrow rgb_{de}$ setrgbcolor



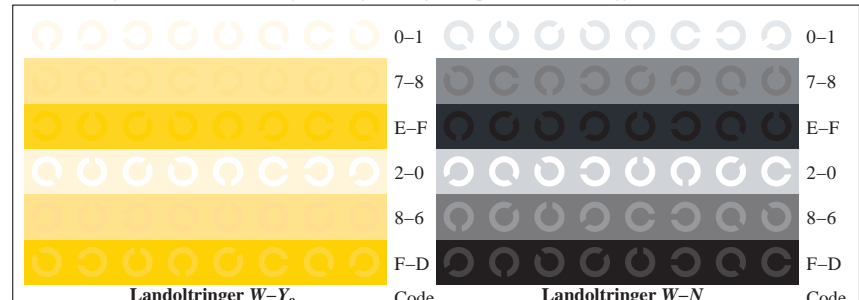
TN950-5, Figur B2Wde: radielt gitter $W-C_e$; $W-M_e$; $W-Y_e$; $W-N$; PS operator $rgb \rightarrow rgb_{de}$ setrgbcolor



TN951-5, Figur B6Wde: Landoltringer $W-C_e$; $W-M_e$; PS operator $rgb \rightarrow rgb_{de}$ setrgbcolor



TN950-7, Figur B3Wde: 14 CIE-prøvefarger og 2 + 16 gråtrinn (sf); $rgb/cmy0 \rightarrow rgb_{de}$ setrgbcolor



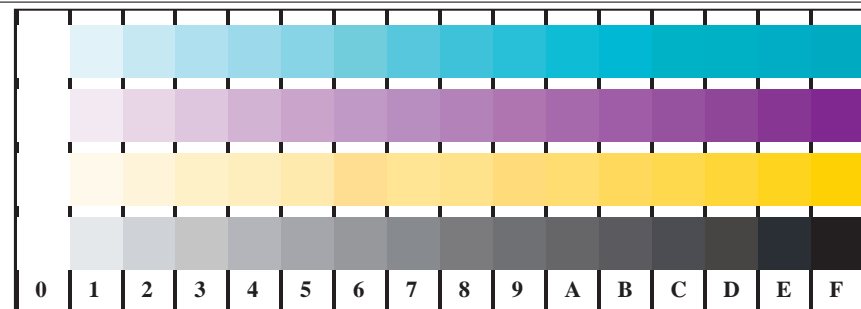
TN951-7, Figur B7Wde: Landoltringer $W-Y_e$; $W-N$; PS operator $rgb \rightarrow rgb_{de}$ setrgbcolor



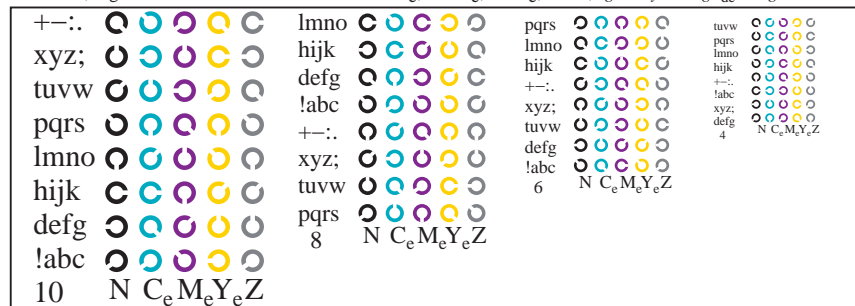
se lignende filer: <http://130.149.60.45/~farbmetrik/TN95/TN95.HTM>
 teknisk informasjon: <http://www.ps.bam.de> eller <http://130.149.60.45/~farbmetrik>

TUB registrering: 20150701-TN95/TN95L0FA.TXT /.PS
 anvendelse for måling av offsettrykk output, separasjoncmyk* (CMYK)

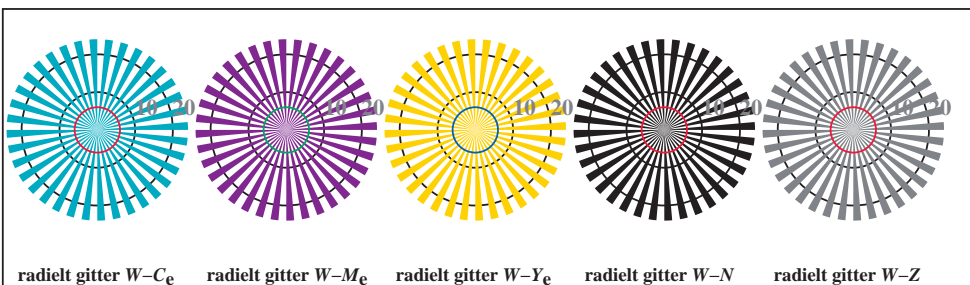
TUB-material: code=rh4ta



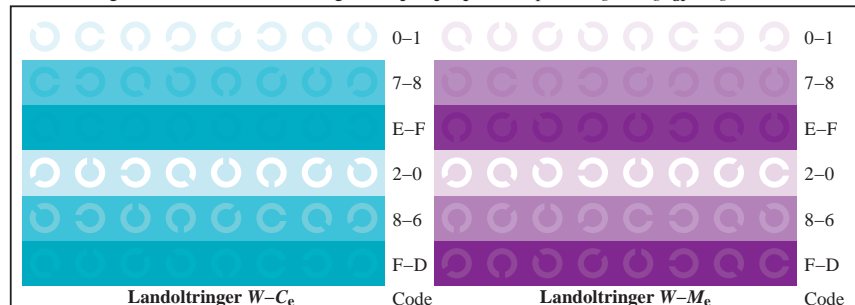
TN951-1, Figur B4Wde: 16 ekvidistante trinn $W-C_e$; $W-M_e$; $W-Y_e$; $W-N$; $rgb/cmy0 \rightarrow rgb_{de}$ setrgbcolor



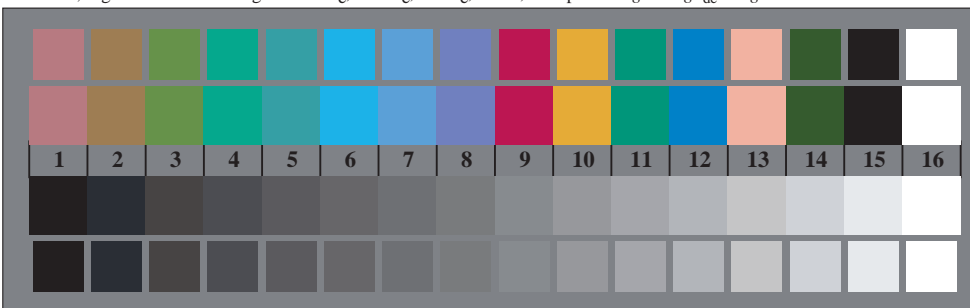
TN951-3, Figur B5Wde: Skrift Landoltringer N ; C_e ; M_e ; Y_e ; Z ; PS operator $rgb \rightarrow rgb_{de}$ setrgbcolor



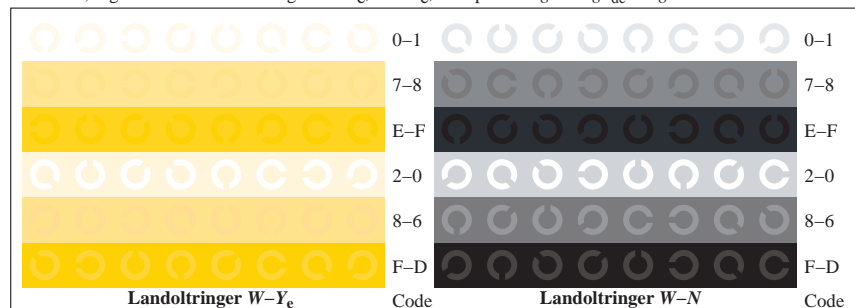
TN950-5, Figur B2Wde: radielt gitter $W-C_e$; $W-M_e$; $W-Y_e$; $W-N$; PS operator $rgb \rightarrow rgb_{de}$ setrgbcolor



TN951-5, Figur B6Wde: Landoltringer $W-C_e$; $W-M_e$; PS operator $rgb \rightarrow rgb_{de}$ setrgbcolor



TN950-7, Figur B3Wde: 14 CIE-prøvefarger og 2 + 16 gråtrinn (sf); $rgb/cmy0 \rightarrow rgb_{de}$ setrgbcolor



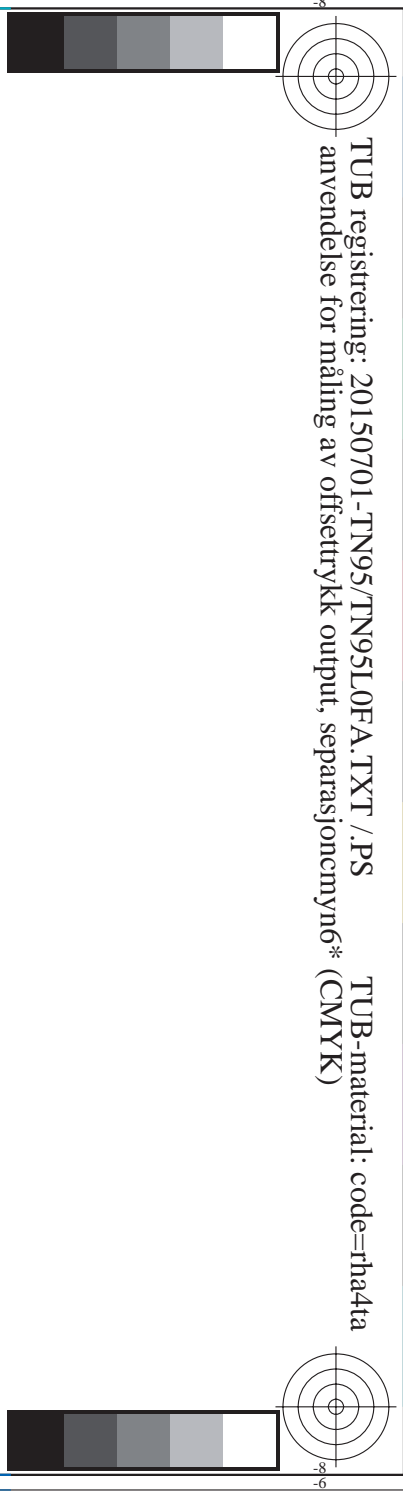
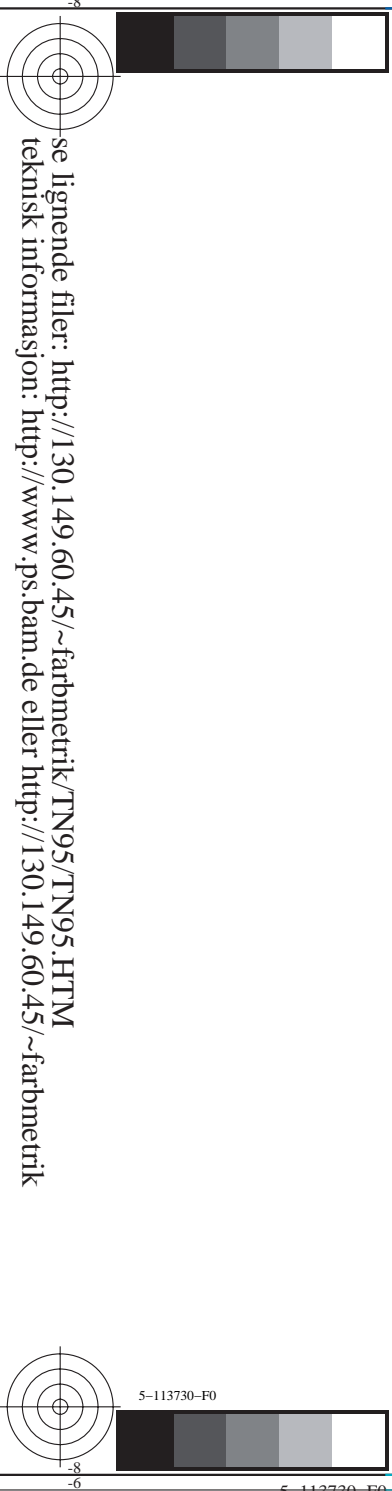
TN951-7, Figur B7Wde: Landoltringer $W-Y_e$; $W-N$; PS operator $rgb \rightarrow rgb_{de}$ setrgbcolor

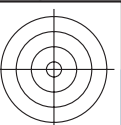


TUB registrering: 20150701-TN95/TN95L0FA.TXT /.PS TUB-material: code=rh4ta
anvendelse for måling av offsettrykk output, separasjoncmyk* (CMYK)

se lignende filer: <http://130.149.60.45/~farbmetrik/TN95/TN95.HTM>
teknisk informasjon: <http://www.ps.bam.de> eller <http://130.149.60.45/~farbmetrik>

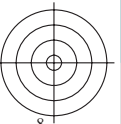


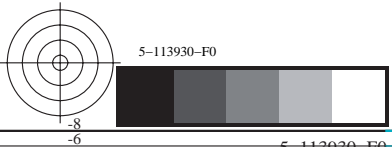


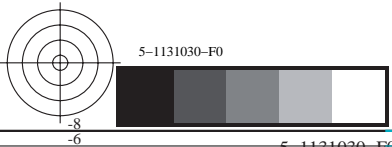
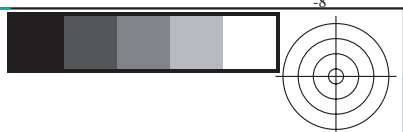


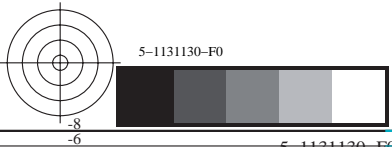
TUB registrering: 20150701-TN95/TN95L0FA.TXT /.PS TUB-material: code=rh4ta
anvendelse for måling av offsettrykk output, separasjoncmyk* (CMYK)

se lignende filer: <http://130.149.60.45/~farbmetrik/TN95/TN95.HTM>
teknisk informasjon: <http://www.ps.bam.de> eller <http://130.149.60.45/~farbmetrik>









TUB registrering: 20150701-TN95/TN95L0FA.TXT /.PS TUB-material: code=rh4ta
anvendelse for måling av offsettrykk output, separasjoncmyk* (CMYK)

se lignende filer: <http://130.149.60.45/~farbmetrik/TN95/TN95.HTM>
teknisk informasjon: <http://www.ps.bam.de> eller <http://130.149.60.45/~farbmetrik>



