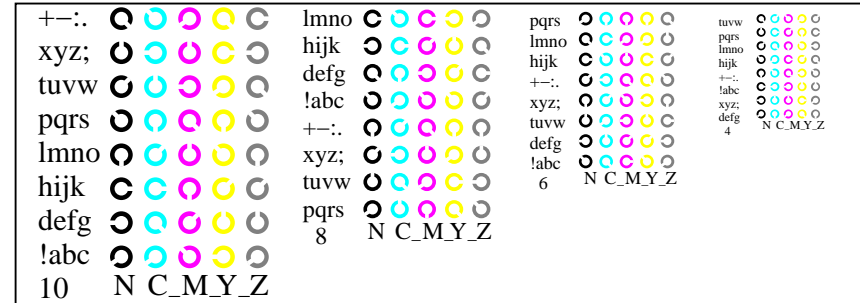
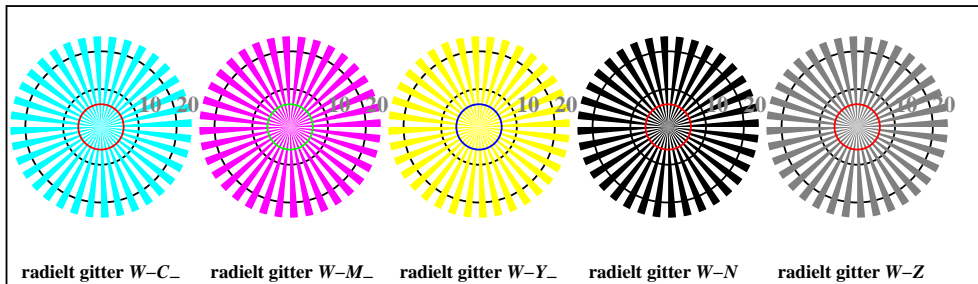


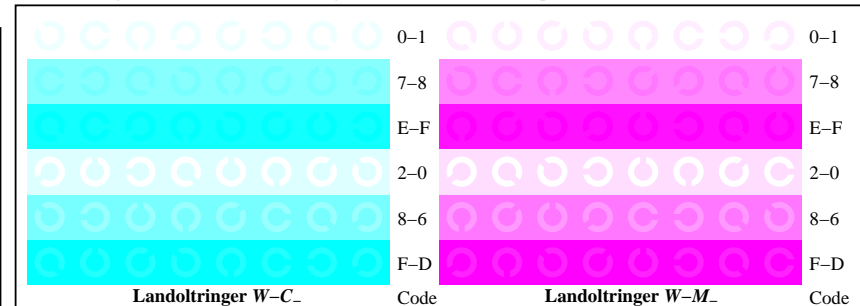
TN951-1, Figur B4W-: 16 ekvidistante trinn W-C₋; W-M₋; W-Y₋; W-N₋; rgb/cmy0 set(rgb/cmyk)color



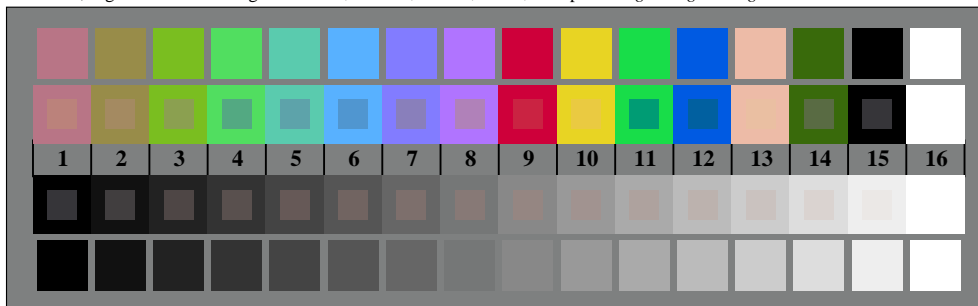
TN951-3, Figur B5W-: Skrift Landoltringer N; C₋; M₋; Y₋; Z; PS operator rgb->rgb_setrgbcolor



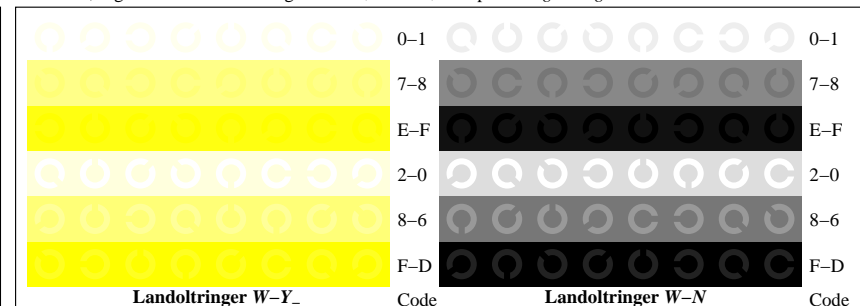
TN950-5, Figur B2W-: radielt gitter W-C₋; W-M₋; W-Y₋; W-N₋; PS operator rgb->rgb_setrgbcolor



TN951-5, Figur B6W-: Landoltringer W-C₋; W-M₋; PS operator rgb_setrgbcolor



TN950-7, Figur B3W-: 14 CIE-prøvefarger og 2 + 16 gråtrinn (sf); rgb/cmy0 set(rgb/cmyk)color



TN951-7, Figur B7W-: Landoltringer W-Y₋; W-N₋; PS operator rgb_setrgbcolor