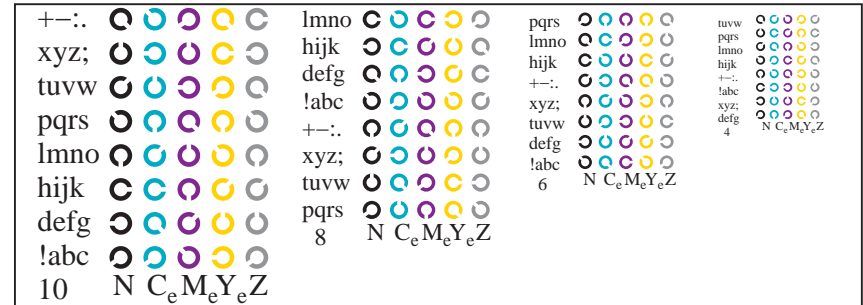
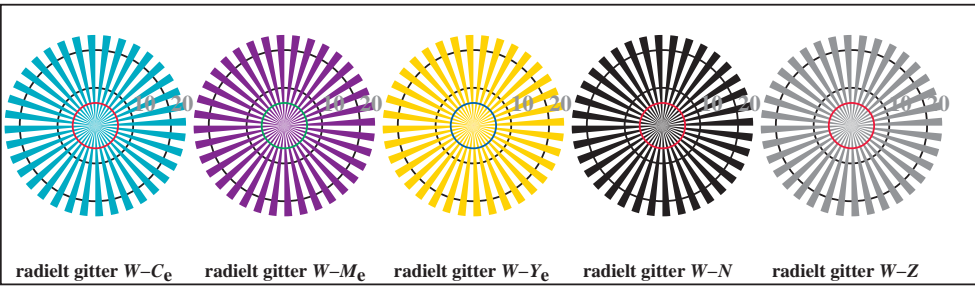


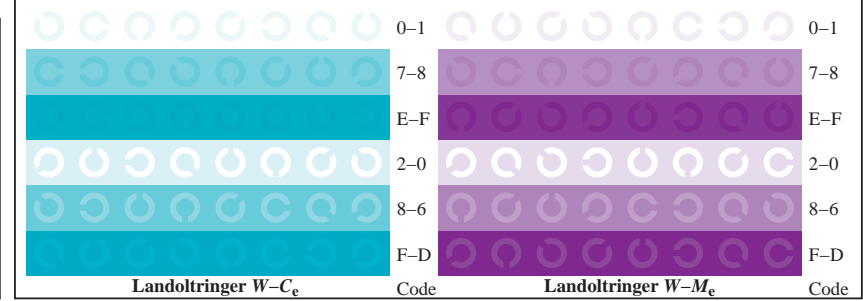
TN951-1, Figur B4We: 16 ekvidistante trinn $W-C_e$; $W-M_e$; $W-Y_e$; $W-N$; $rgb/cmy0 \rightarrow rgb_e$ setrgbcolor



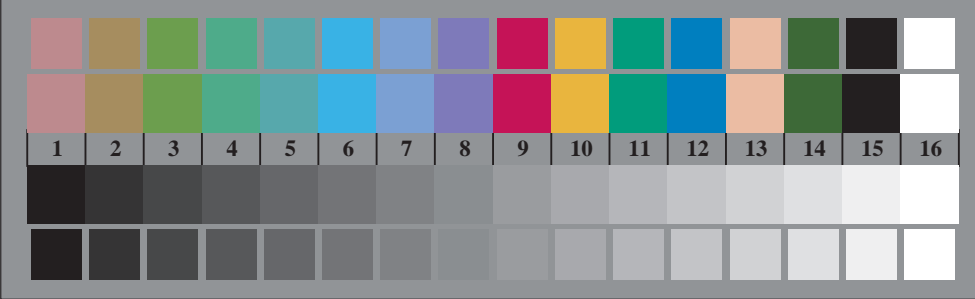
TN951-3, Figur B5We: Skrift Landoltringer N ; C_e ; M_e ; Y_e ; Z ; PS operator $rgb \rightarrow rgb_e$ setrgbcolor



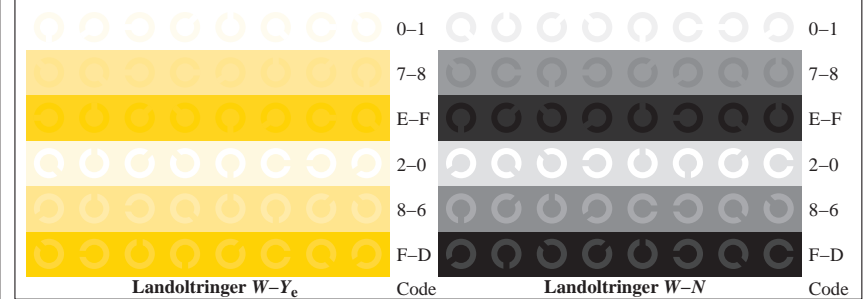
TN950-5, Figur B2We: radielt gitter $W-C_e$; $W-M_e$; $W-Y_e$; $W-N$; PS operator $rgb \rightarrow rgb_e$ setrgbcolor



TN951-3, Figur B5We: Landoltringer $W-C_e$; $W-M_e$; PS operator $rgb \rightarrow rgb_e$ setrgbcolor



TN950-7, Figur B3We: 14 CIE-prøvefarger og 2 + 16 gråtrinn (sf); $rgb/cmy0 \rightarrow rgb_e$ setrgbcolor



TN951-5, Figur B6We: Landoltringer $W-Y_e$; $W-N$; PS operator $rgb \rightarrow rgb_e$ setrgbcolor