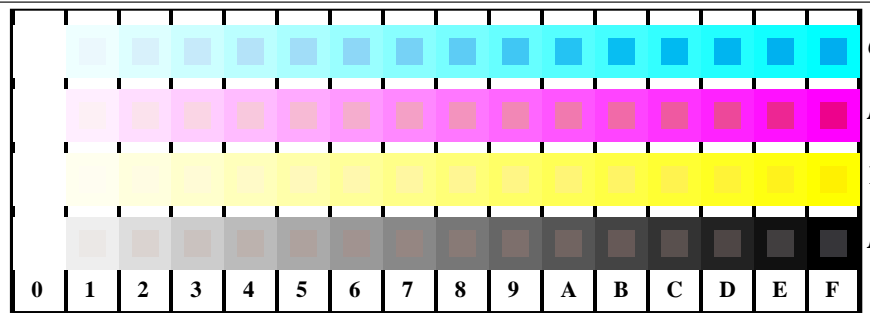


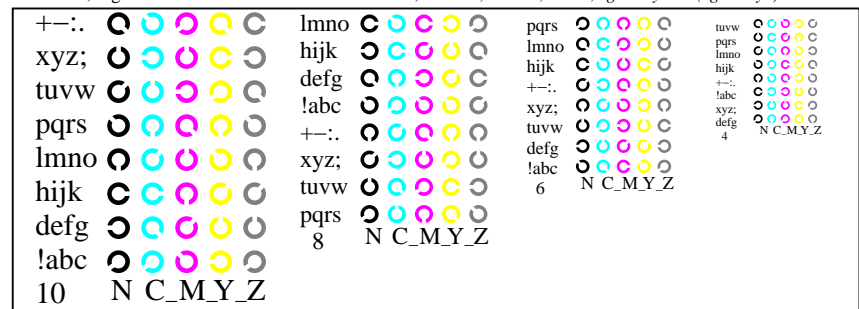
se lignende filer: <http://130.149.60.45/~farbmetrik/TN94/TN94.HTM>  
teknisk informasjon: <http://www.ps.bam.de> eller <http://130.149.60.45/~farbmetrik>

TUB registrering: 20150701-TN94/TN94L0NP.PDF /.PS  
anvendelse for måling av offsettrykk output

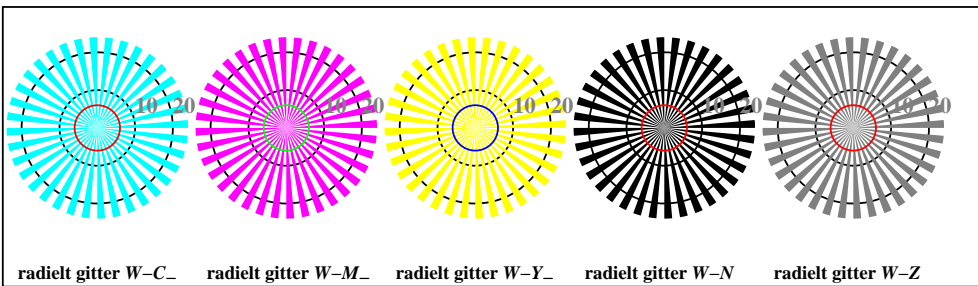
TUB-material: code=rh4ta



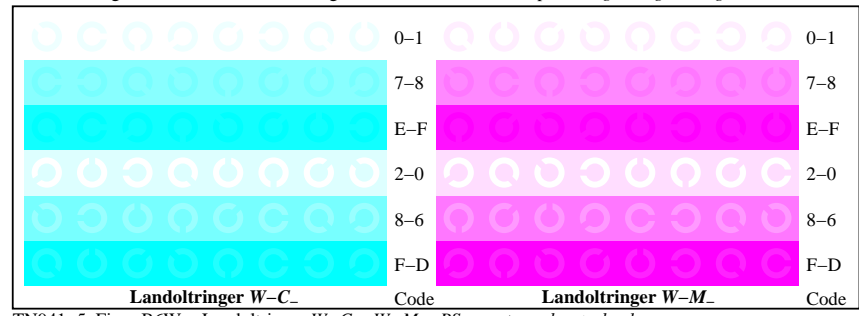
TN941-1, Figur B4W-: 16 ekvidistante trinn W-C<sub>-</sub>; W-M<sub>-</sub>; W-Y<sub>-</sub>; W-N; rgb/cmy0 set(rgb/cmyk)color



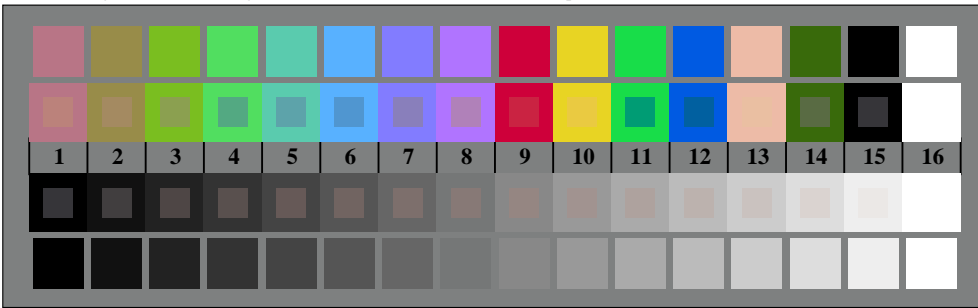
TN941-3, Figur B5W-: Skrift Landoltringer N; C<sub>-</sub>; M<sub>-</sub>; Y<sub>-</sub>; Z; PS operator rgb->rgb\_setrgbcolor



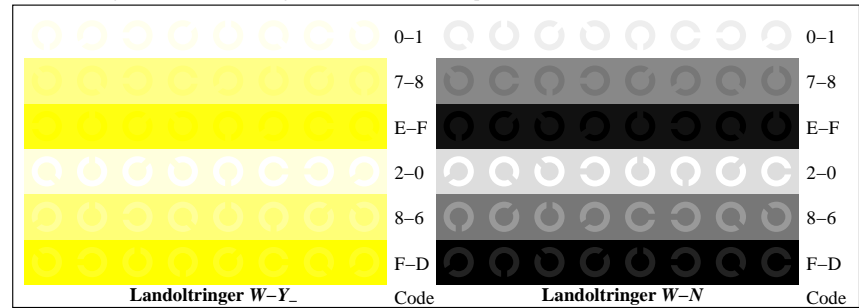
TN940-5, Figur B2W-: radielt gitter W-C<sub>-</sub>; W-M<sub>-</sub>; W-Y<sub>-</sub>; W-N; PS operator rgb->rgb\_setrgbcolor



TN941-5, Figur B6W-: Landoltringer W-C<sub>-</sub>; W-M<sub>-</sub>; PS operator rgb setrgbcolor



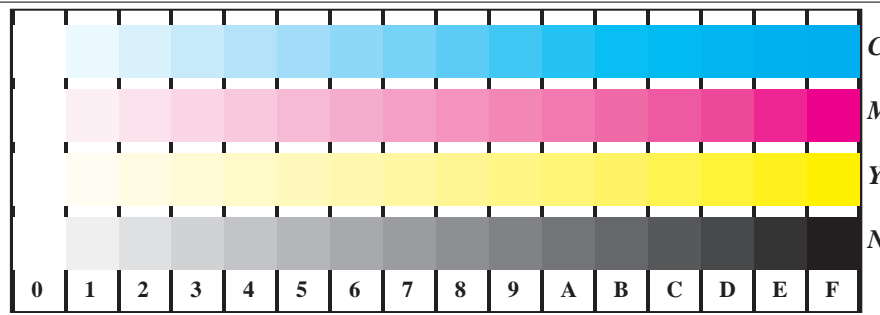
TN940-7, Figur B3W-: 14 CIE-prøvefarger og 2 + 16 gråtrinn (sf); rgb/cmy0 set(rgb/cmyk)color



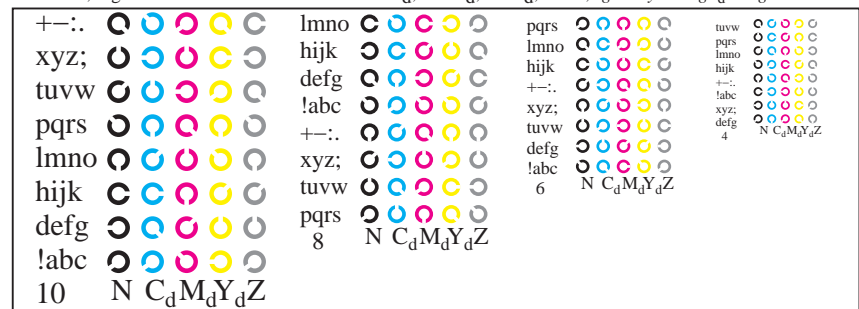
TN941-7, Figur B7W-: Landoltringer W-Y<sub>-</sub>; W-N; PS operator rgb setrgbcolor

se lignende filer: <http://130.149.60.45/~farbmetrik/TN94/TN94.HTM>  
teknisk informasjon: <http://www.ps.bam.de> eller <http://130.149.60.45/~farbmetrik>

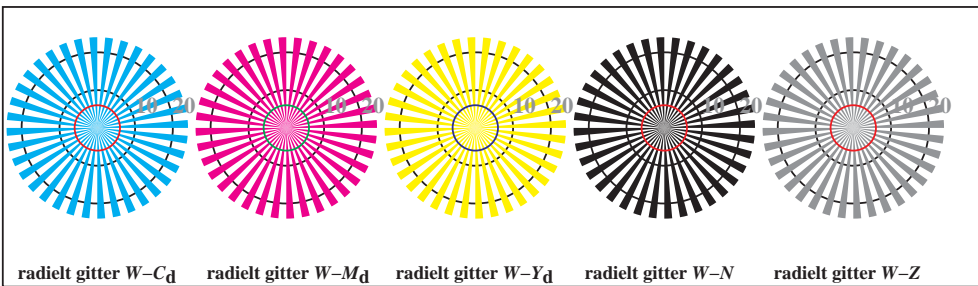
TUB registrering: 20150701-TN94/TN94L0NP.PDF /.PS  
anvendelse for måling av offsettrykk output, separasjoncmyn6 (CMYK)  
TUB-material: code=rh4ta



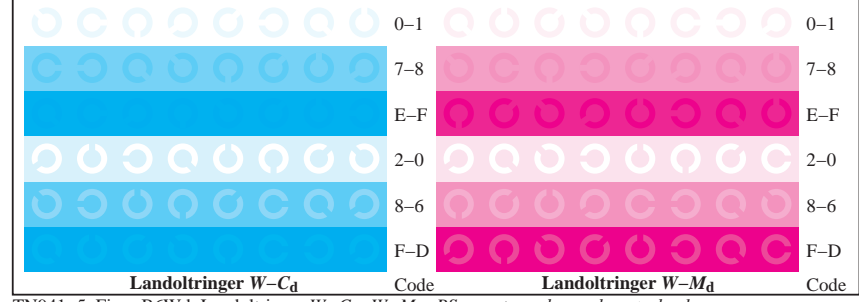
TN941-1, Figur B4Wd: 16 ekvidistante trinn W-C<sub>d</sub>; W-M<sub>d</sub>; W-Y<sub>d</sub>; W-N; rgb/cmy0->rgb<sub>d</sub> setrgbcolor



TN941-3, Figur B5Wd: Skrift Landoltringer N; C<sub>d</sub>; M<sub>d</sub>; Y<sub>d</sub>; Z; PS operator rgb->rgb<sub>d</sub> setrgbcolor



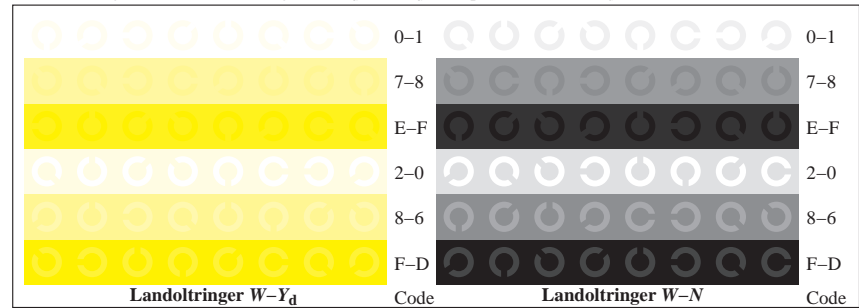
TN940-5, Figur B2Wd: radielt gitter W-C<sub>d</sub>; W-M<sub>d</sub>; W-Y<sub>d</sub>; W-N; PS operator rgb->rgb<sub>d</sub> setrgbcolor



TN941-5, Figur B6Wd: Landoltringer W-C<sub>d</sub>; W-M<sub>d</sub>; PS operator rgb->rgb<sub>d</sub> setrgbcolor



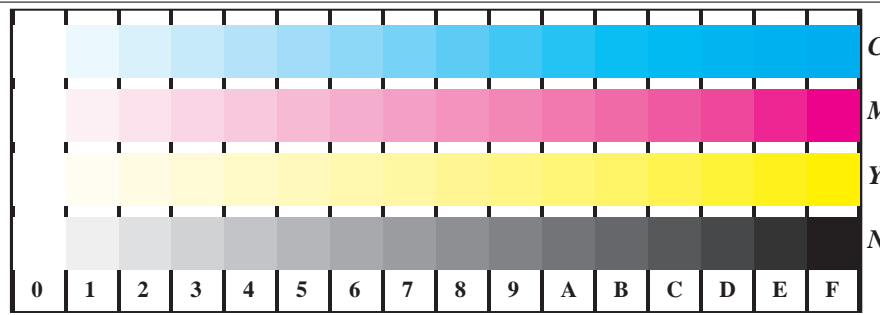
TN940-7, Figur B3Wd: 14 CIE-prøvefarger og 2 + 16 gråtrinn (sf); rgb/cmy0->rgb<sub>d</sub> setrgbcolor



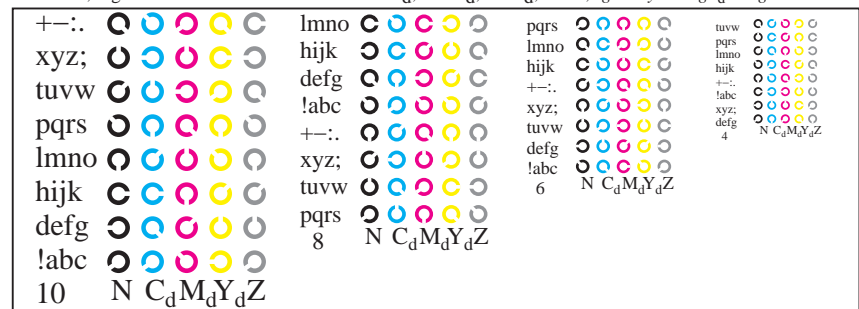
TN941-7, Figur B7Wd: Landoltringer W-Y<sub>d</sub>; W-N; PS operator rgb->rgb<sub>d</sub> setrgbcolor

se lignende filer: <http://130.149.60.45/~farbmetrik/TN94/TN94.HTM>  
 teknisk informasjon: <http://www.ps.bam.de> eller <http://130.149.60.45/~farbmetrik>

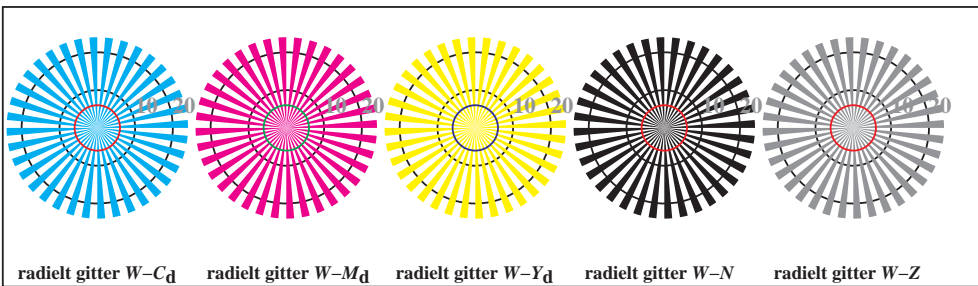
TUB registrering: 20150701-TN94/TN94L0NP.PDF /.PS  
 anvendelse for måling av offsettrykk output, separasjoncmyn6 (CMYK)  
 TUB-material: code=rh4ta



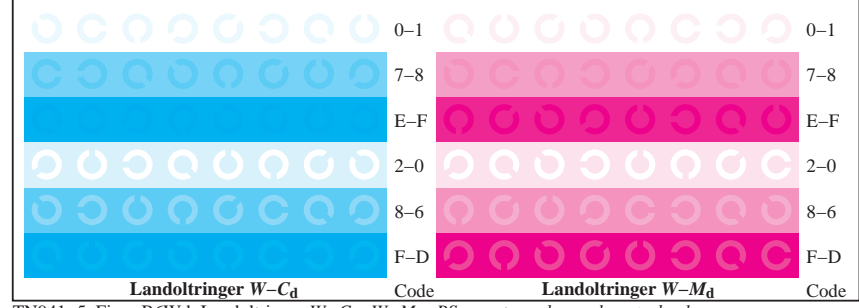
TN941-1, Figur B4Wd: 16 ekvidistante trinn W-C<sub>d</sub>; W-M<sub>d</sub>; W-Y<sub>d</sub>; W-N; rgb/cmy0->rgb<sub>d</sub> setrgbcolor



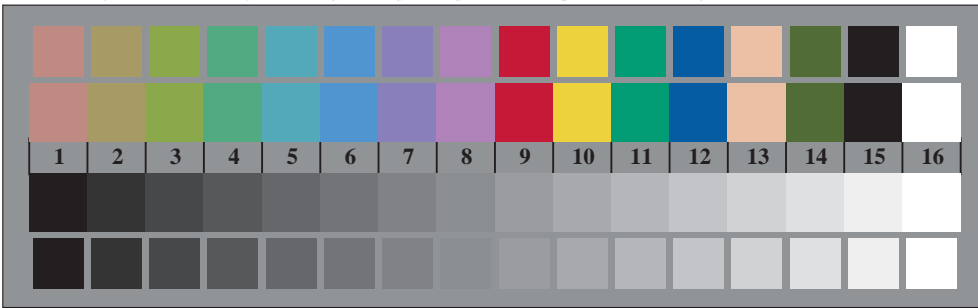
TN941-3, Figur B5Wd: Skrift Landoltringer N; C<sub>d</sub>; M<sub>d</sub>; Y<sub>d</sub>; Z; PS operator rgb->rgb<sub>d</sub> setrgbcolor



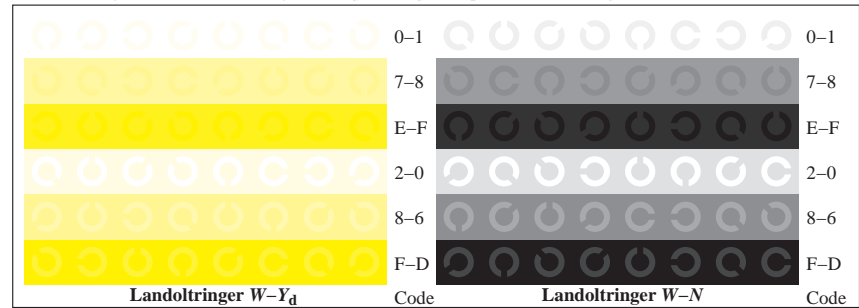
TN940-5, Figur B2Wd: radielt gitter W-C<sub>d</sub>; W-M<sub>d</sub>; W-Y<sub>d</sub>; W-N; PS operator rgb->rgb<sub>d</sub> setrgbcolor



TN941-5, Figur B6Wd: Landoltringer W-C<sub>d</sub>; W-M<sub>d</sub>; PS operator rgb->rgb<sub>d</sub> setrgbcolor



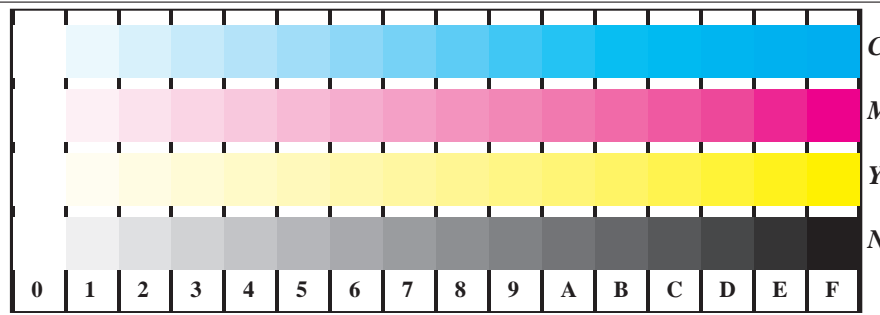
TN940-7, Figur B3Wd: 14 CIE-prøvefarger og 2 + 16 gråtrinn (sf); rgb/cmy0->rgb<sub>d</sub> setrgbcolor



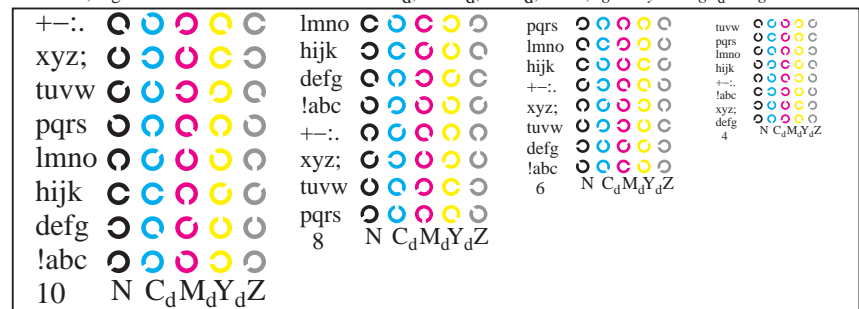
TN941-7, Figur B7Wd: Landoltringer W-Y<sub>d</sub>; W-N; PS operator rgb->rgb<sub>d</sub> setrgbcolor

se lignende filer: <http://130.149.60.45/~farbmetrik/TN94/TN94.HTM>  
 teknisk informasjon: <http://www.ps.bam.de> eller <http://130.149.60.45/~farbmetrik>

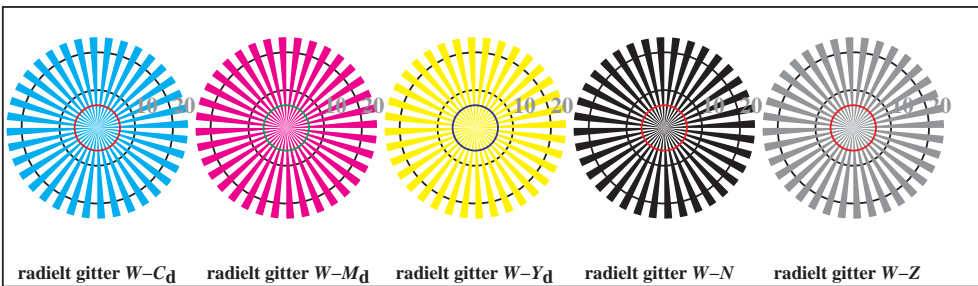
TUB registrering: 20150701-TN94/TN94L0NP.PDF /.PS TUB-material: code=rh4ta  
 anvendelse for måling av offsettrykk output, separasjoncmyn6 (CMYK)



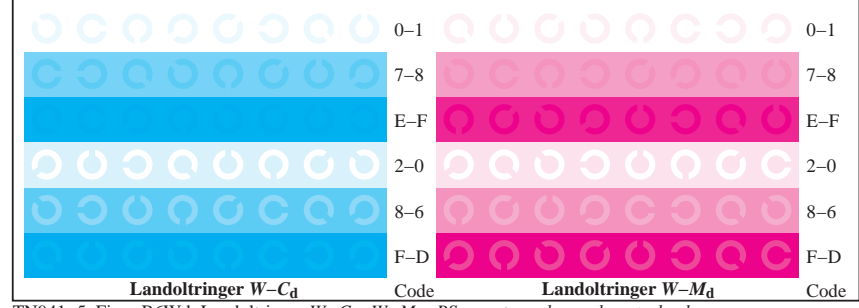
TN941-1, Figur B4Wd: 16 ekvidistante trinn W-C<sub>d</sub>; W-M<sub>d</sub>; W-Y<sub>d</sub>; W-N; rgb/cmy0->rgb<sub>d</sub> setrgbcolor



TN941-3, Figur B5Wd: Skrift Landoltringer N; C<sub>d</sub>; M<sub>d</sub>; Y<sub>d</sub>; Z; PS operator rgb->rgb<sub>d</sub> setrgbcolor



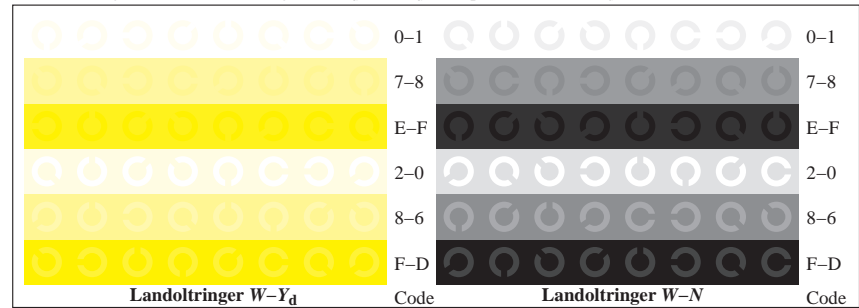
TN940-5, Figur B2Wd: radielt gitter W-C<sub>d</sub>; W-M<sub>d</sub>; W-Y<sub>d</sub>; W-N; PS operator rgb->rgb<sub>d</sub> setrgbcolor



TN941-5, Figur B6Wd: Landoltringer W-C<sub>d</sub>; W-M<sub>d</sub>; PS operator rgb->rgb<sub>d</sub> setrgbcolor



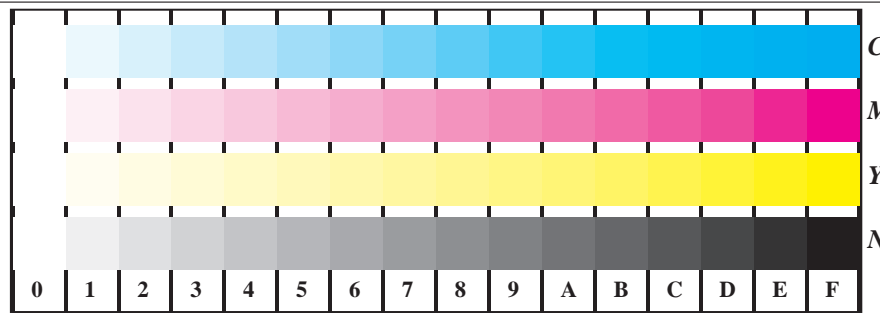
TN940-7, Figur B3Wd: 14 CIE-prøvefarger og 2 + 16 gråtrinn (sf); rgb/cmy0->rgb<sub>d</sub> setrgbcolor



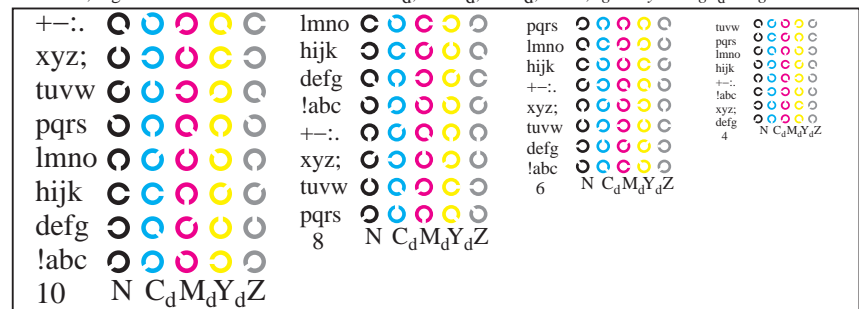
TN941-7, Figur B7Wd: Landoltringer W-Y<sub>d</sub>; W-N; PS operator rgb->rgb<sub>d</sub> setrgbcolor

se lignende filer: <http://130.149.60.45/~farbmetrik/TN94/TN94.HTM>  
 teknisk informasjon: <http://www.ps.bam.de> eller <http://130.149.60.45/~farbmetrik>

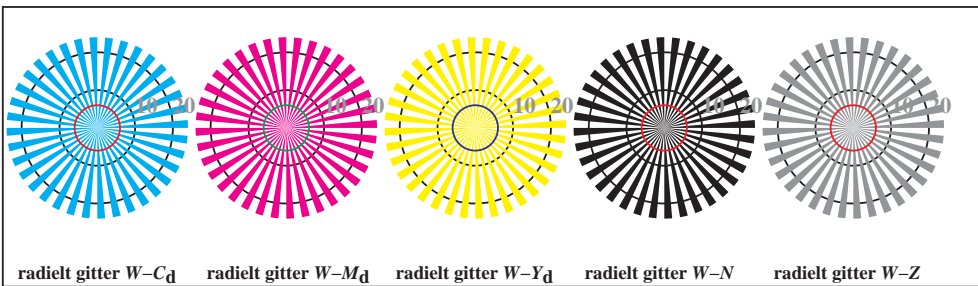
TUB registrering: 20150701-TN94/TN94L0NP.PDF /.PS TUB-material: code=rh4ta  
 anvendelse for måling av offsettrykk output, separasjoncmyn6 (CMYK)



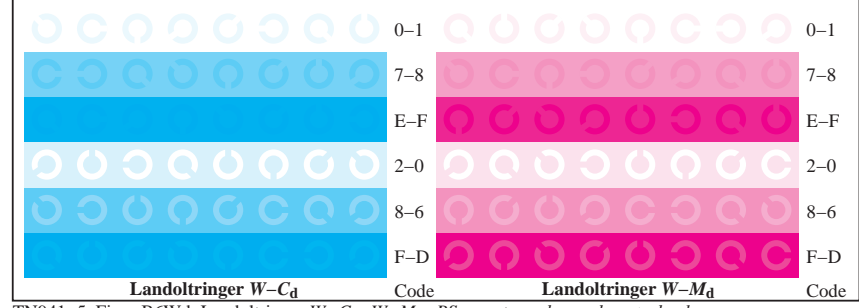
TN941-1, Figur B4Wd: 16 ekvidistante trinn W-C<sub>d</sub>; W-M<sub>d</sub>; W-Y<sub>d</sub>; W-N; rgb/cmy0->rgb<sub>d</sub> setrgbcolor



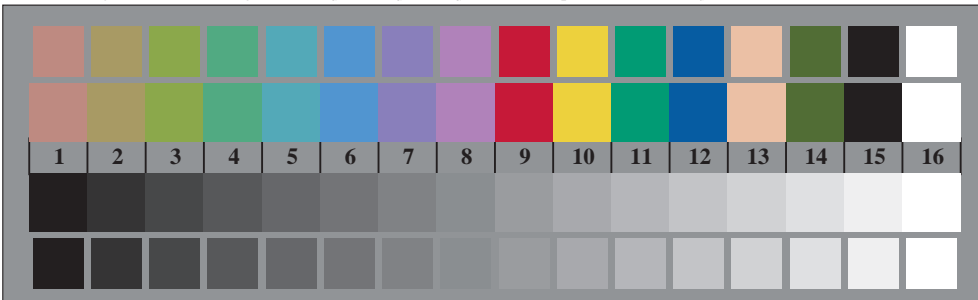
TN941-3, Figur B5Wd: Skrift Landoltringer N; C<sub>d</sub>; M<sub>d</sub>; Y<sub>d</sub>; Z; PS operator rgb->rgb<sub>d</sub> setrgbcolor



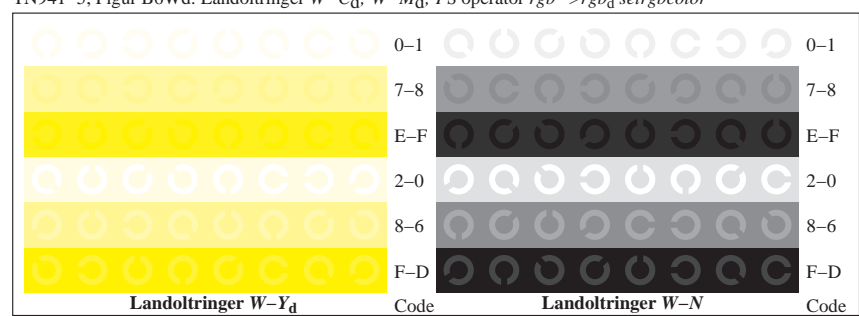
TN940-5, Figur B2Wd: radielt gitter W-C<sub>d</sub>; W-M<sub>d</sub>; W-Y<sub>d</sub>; W-N; PS operator rgb->rgb<sub>d</sub> setrgbcolor



TN941-5, Figur B6Wd: Landoltringer W-C<sub>d</sub>; W-M<sub>d</sub>; PS operator rgb->rgb<sub>d</sub> setrgbcolor



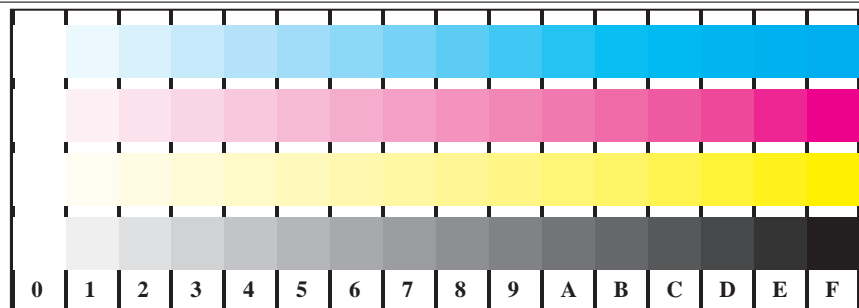
TN940-7, Figur B3Wd: 14 CIE-prøvefarger og 2 + 16 gråtrinn (sf); rgb/cmy0->rgb<sub>d</sub> setrgbcolor



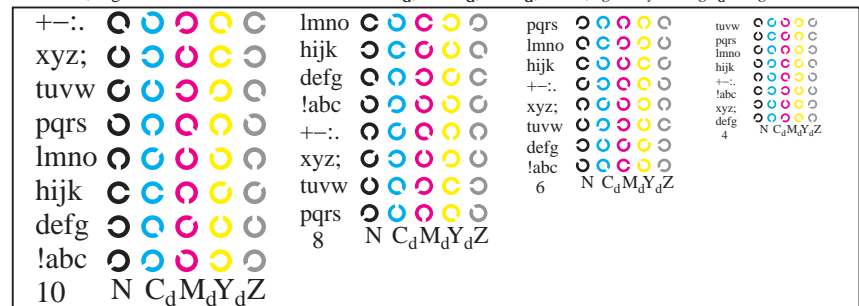
TN941-7, Figur B7Wd: Landoltringer W-Y<sub>d</sub>; W-N; PS operator rgb->rgb<sub>d</sub> setrgbcolor

se lignende filer: <http://130.149.60.45/~farbmetrik/TN94/TN94.HTM>  
 teknisk informasjon: <http://www.ps.bam.de> eller <http://130.149.60.45/~farbmetrik>

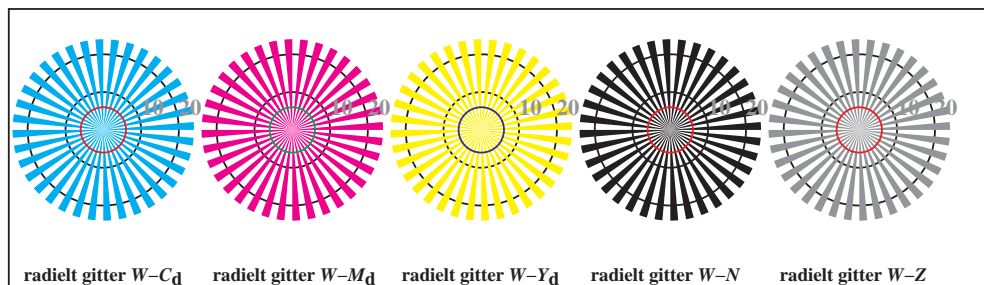
TUB registrering: 20150701-TN94/TN94L0NP.PDF /.PS TUB-material: code=rh4ta  
 anvendelse for måling av offsettrykk output, separasjoncmyn6 (CMYK)



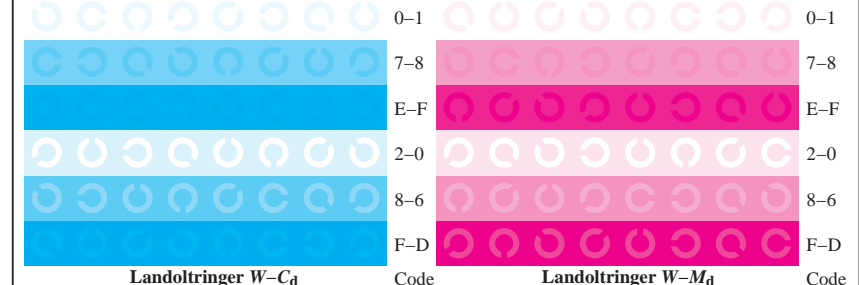
TN941-1, Figur B4Wd: 16 ekvidistante trinn W-C<sub>d</sub>; W-M<sub>d</sub>; W-Y<sub>d</sub>; W-N; rgb/cmy0->rgb<sub>d</sub> setrgbcolor



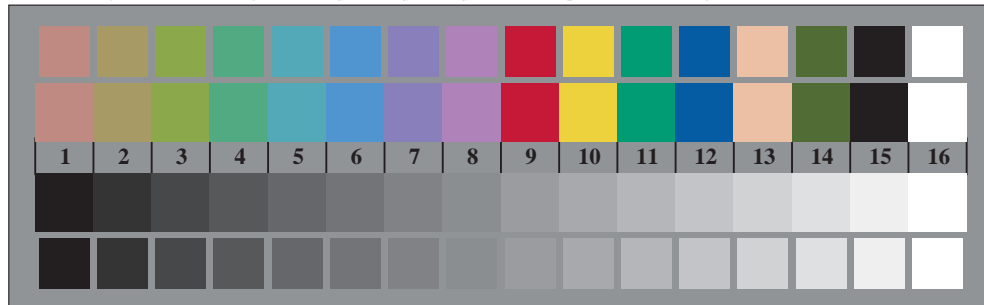
TN941-3, Figur B5Wd: Skrift Landoltringer N; C<sub>d</sub>; M<sub>d</sub>; Y<sub>d</sub>; Z; PS operator rgb->rgb<sub>d</sub> setrgbcolor



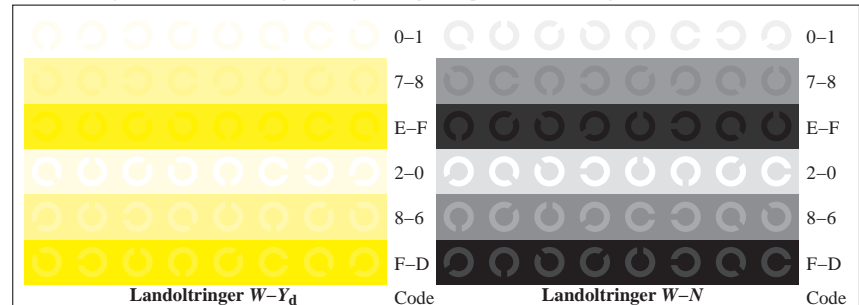
TN940-5, Figur B2Wd: radielt gitter W-C<sub>d</sub>; W-M<sub>d</sub>; W-Y<sub>d</sub>; W-N; PS operator rgb->rgb<sub>d</sub> setrgbcolor



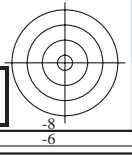
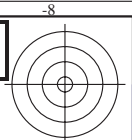
TN941-5, Figur B6Wd: Landoltringer W-C<sub>d</sub>; W-M<sub>d</sub>; PS operator rgb->rgb<sub>d</sub> setrgbcolor



TN940-7, Figur B3Wd: 14 CIE-prøvefarger og 2 + 16 gråtrinn (sf); rgb/cmy0->rgb<sub>d</sub> setrgbcolor

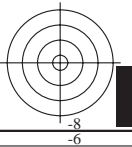
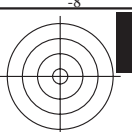
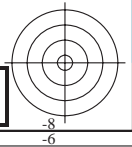
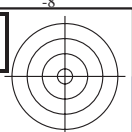


TN941-7, Figur B7Wd: Landoltringer W-Y<sub>d</sub>; W-N; PS operator rgb->rgb<sub>d</sub> setrgbcolor

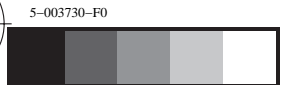


se lignende filer: <http://130.149.60.45/~farbmetrik/TN94/TN94.HTM>  
teknisk informasjon: <http://www.ps.bam.de> eller <http://130.149.60.45/~farbmetrik>



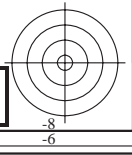
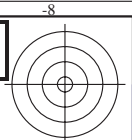


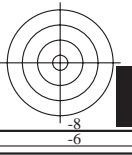
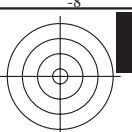
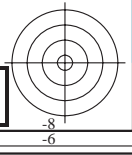
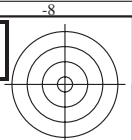
se lignende filer: <http://130.149.60.45/~farbmetrik/TN94/TN94.HTM>  
teknisk informasjon: <http://www.ps.bam.de> eller <http://130.149.60.45/~farbmetrik>



5-003730-F0



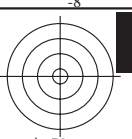
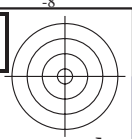




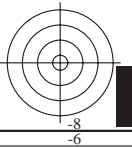
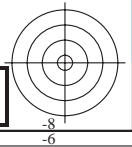
se lignende filer: <http://130.149.60.45/~farbmetrik/TN94/TN94.HTM>  
teknisk informasjon: <http://www.ps.bam.de> eller <http://130.149.60.45/~farbmetrik>

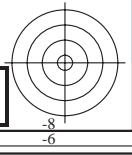
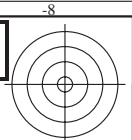
5-003930-F0

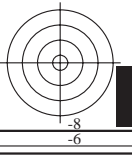
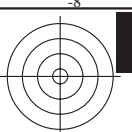
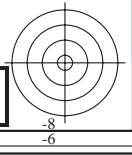
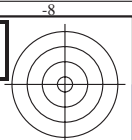
5-003930-F0



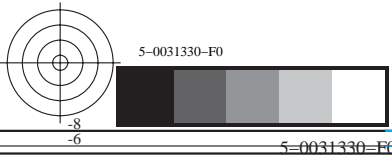
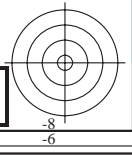
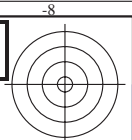
se lignende filer: <http://130.149.60.45/~farbmetrik/TN94/TN94.HTM>  
teknisk informasjon: <http://www.ps.bam.de> eller <http://130.149.60.45/~farbmetrik>

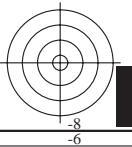
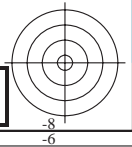
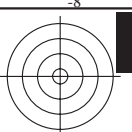
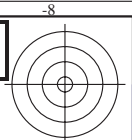


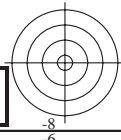
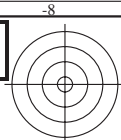




se lignende filer: <http://130.149.60.45/~farbmetrik/TN94/TN94.HTM>  
teknisk informasjon: <http://www.ps.bam.de> eller <http://130.149.60.45/~farbmetrik>

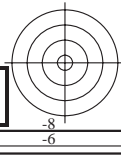
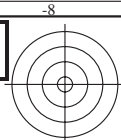




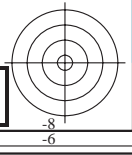
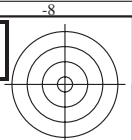


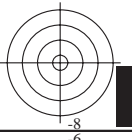
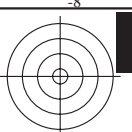
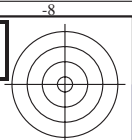
se lignende filer: <http://130.149.60.45/~farbmetrik/TN94/TN94.HTM>  
teknisk informasjon: <http://www.ps.bam.de> eller <http://130.149.60.45/~farbmetrik>

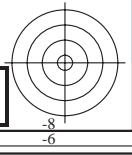
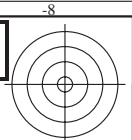


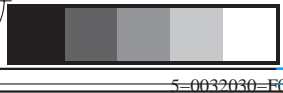
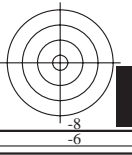
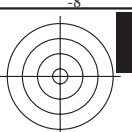
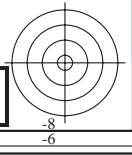
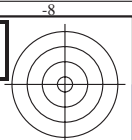


se lignende filer: <http://130.149.60.45/~farbmetrik/TN94/TN94.HTM>  
teknisk informasjon: <http://www.ps.bam.de> eller <http://130.149.60.45/~farbmetrik>

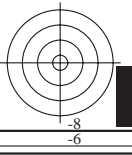
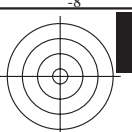
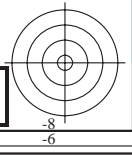
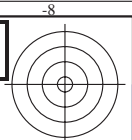








se lignende filer: <http://130.149.60.45/~farbmetrik/TN94/TN94.HTM>  
teknisk informasjon: <http://www.ps.bam.de> eller <http://130.149.60.45/~farbmetrik>



se lignende filer: <http://130.149.60.45/~farbmetrik/TN94/TN94.HTM>  
teknisk informasjon: <http://www.ps.bam.de> eller <http://130.149.60.45/~farbmetrik>

5-0032130-F0