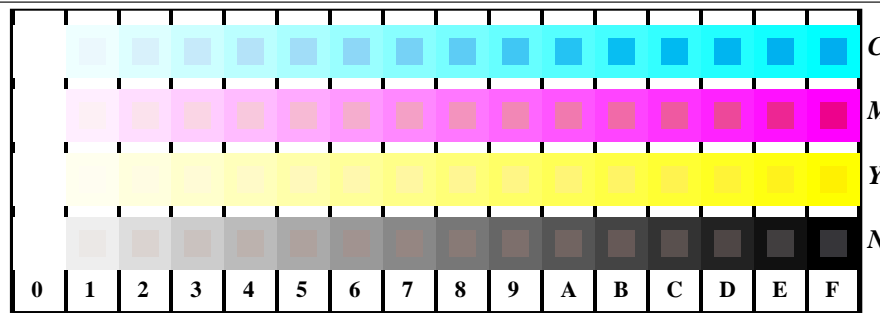


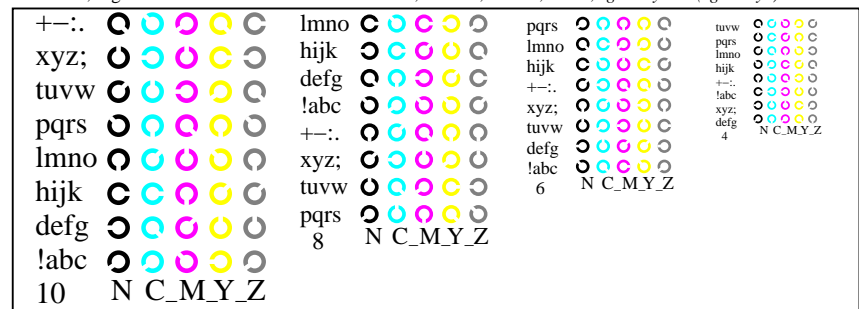
se lignende filer: <http://130.149.60.45/~farbmetrik/TN94/TN94.HTM>
teknisk informasjon: <http://www.ps.bam.de> eller <http://130.149.60.45/~farbmetrik>

TUB registrering: 20150701-TN94/TN94L0FP.PDF /.PS
anvendelse for måling av offsettrykk output

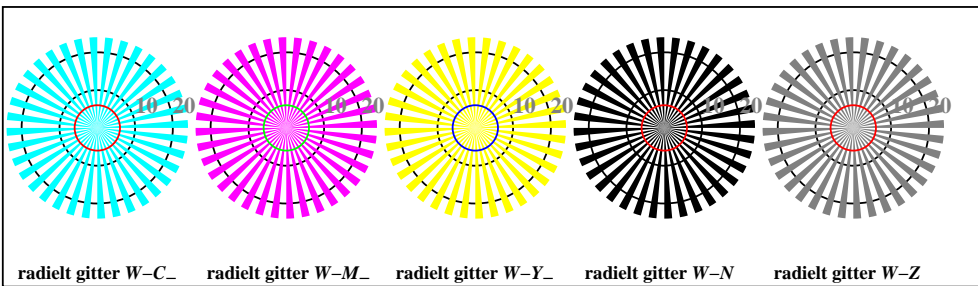
TUB-material: code=rh4ta



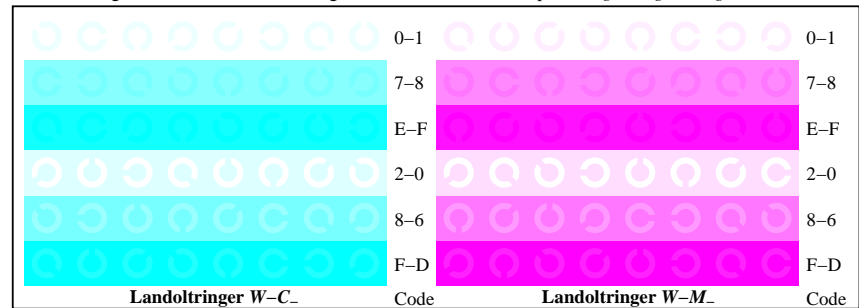
TN941-1, Figur B4W-: 16 ekvidistante trinn W-C₋; W-M₋; W-Y₋; W-N; rgb/cmy0 set(rgb/cmyk)color



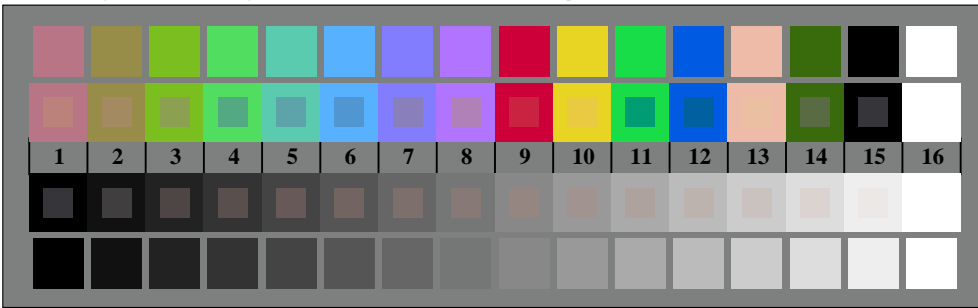
TN941-3, Figur B5W-: Skrift Landoltringer N; C₋; M₋; Y₋; Z; PS operator rgb->rgb_setrgbcolor



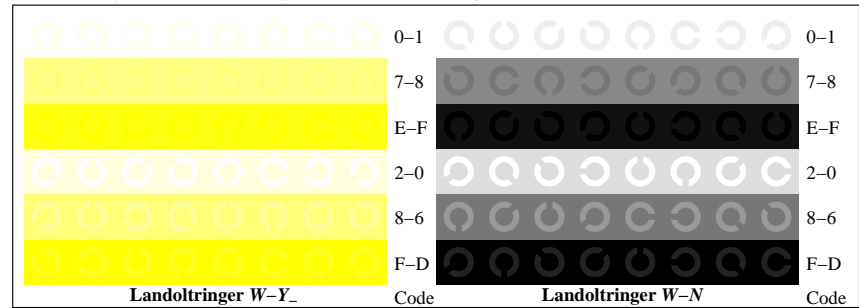
TN940-5, Figur B2W-: radielt gitter W-C₋; W-M₋; W-Y₋; W-N; PS operator rgb->rgb_setrgbcolor



TN941-5, Figur B6W-: Landoltringer W-C₋; W-M₋; PS operator rgb_setrgbcolor



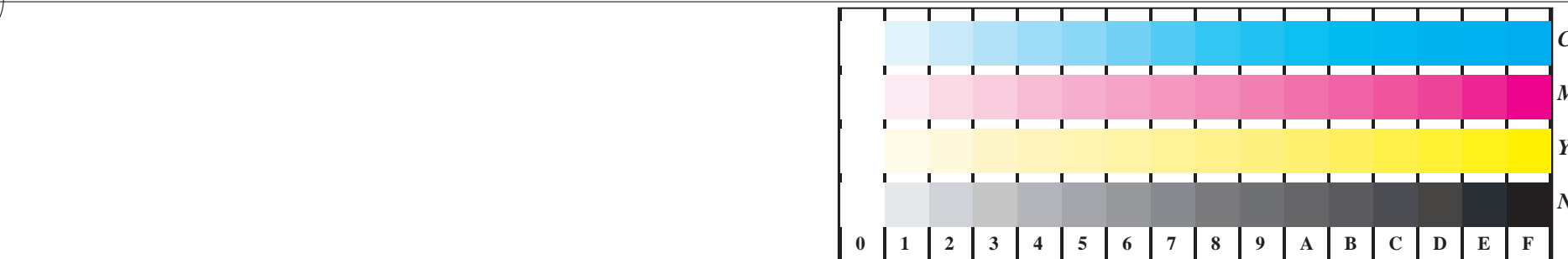
TN940-7, Figur B3W-: 14 CIE-prøvefarger og 2 + 16 gråtrinn (sf); rgb/cmy0 set(rgb/cmyk)color



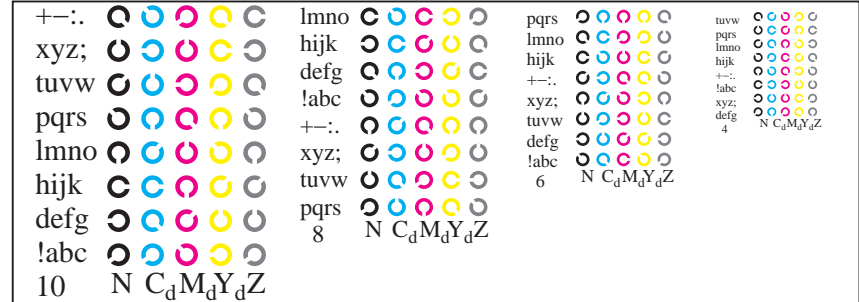
TN941-7, Figur B7W-: Landoltringer W-Y₋; W-N; PS operator rgb_setrgbcolor

se lignende filer: <http://130.149.60.45/~farbmetrik/TN94/TN94.HTM>
teknisk informasjon: <http://www.ps.bam.de> eller <http://130.149.60.45/~farbmetrik>

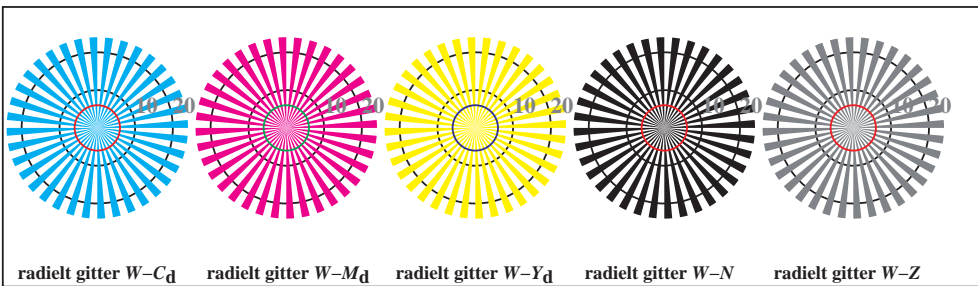
TUB registrering: 20150701-TN94/TN94L0FP.PDF /.PS
anvendelse for måling av offsettrykk output, separasjoncmykn6* (CMYK)
TUB-material: code=rh4ta



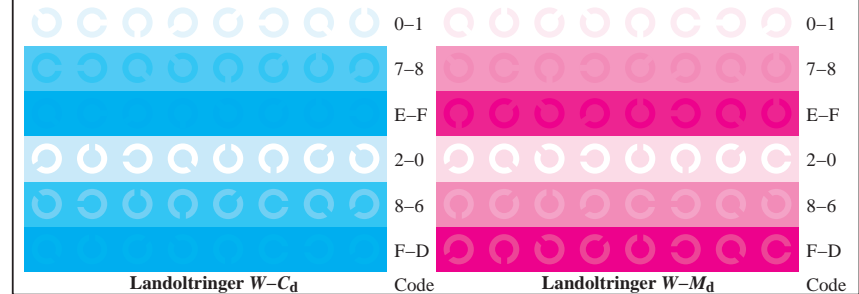
TN941-1, Figur B4Wdd: 16 ekvidistante trinn W-C_d; W-M_d; W-Y_d; W-N; rgb/cmy0->rgb_{dd} setrgbcolor



TN941-3, Figur B5Wdd: Skrift Landoltringer N; C_d; M_d; Y_d; Z; PS operator rgb->rgb_{dd} setrgbcolor



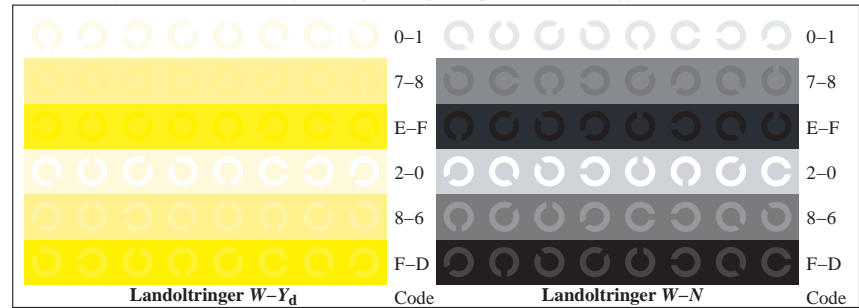
TN940-5, Figur B2Wdd: radielt gitter W-C_d; W-M_d; W-Y_d; W-N; PS operator rgb->rgb_{dd} setrgbcolor



TN941-5, Figur B6Wdd: Landoltringer W-C_d; W-M_d; PS operator rgb->rgb_{dd} setrgbcolor



TN940-7, Figur B3Wdd: 14 CIE-prøvefarger og 2 + 16 gråtrinn (sf); rgb/cmy0->rgb_{dd} setrgbcolor

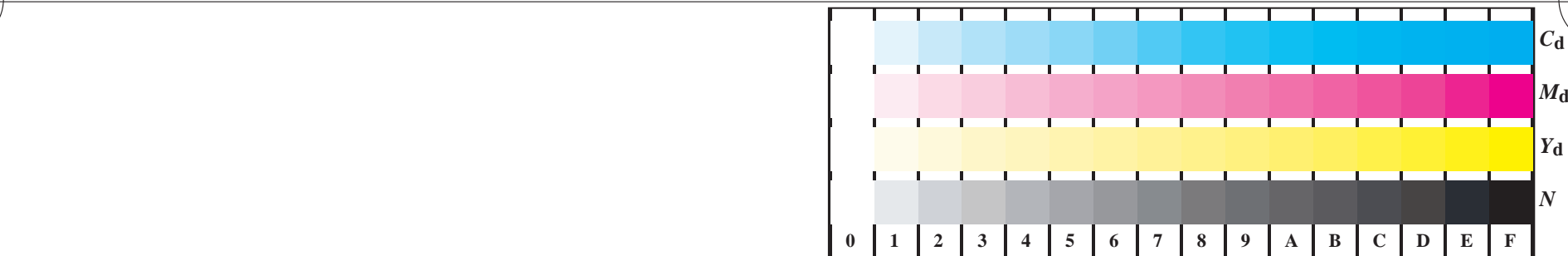


TN941-7, Figur B7Wdd: Landoltringer W-Y_d; W-N; PS operator rgb->rgb_{dd} setrgbcolor

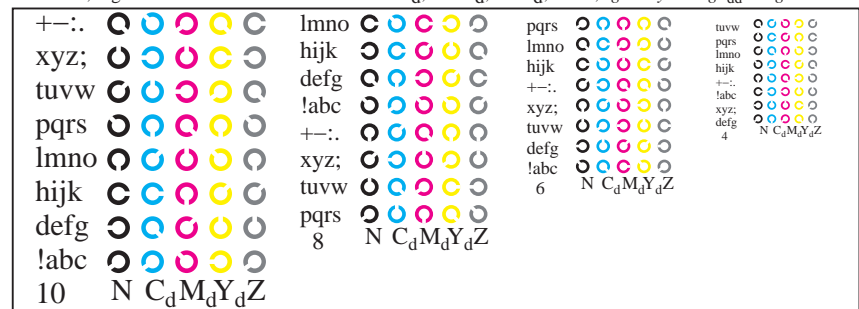


se lignende filer: <http://130.149.60.45/~farbmetrik/TN94/TN94.HTM>
 teknisk informasjon: <http://www.ps.bam.de> eller <http://130.149.60.45/~farbmetrik>

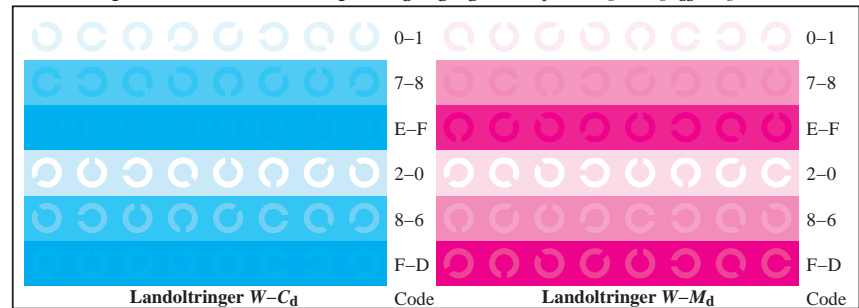
TUB registrering: 20150701-TN94/TN94L0FP.PDF /.PS
 anvendelse for måling av offsettrykk output, separasjoncmyn6* (CMYK)
 TUB-material: code=rh4ta



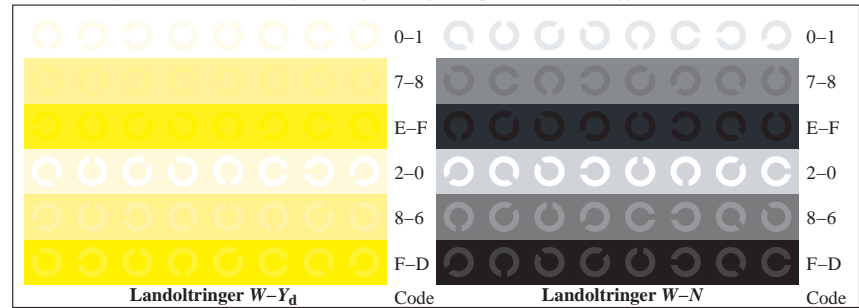
TN941-1, Figur B4Wdd: 16 ekvidistante trinn W-C_d; W-M_d; W-Y_d; W-N; rgb/cmy0->rgb_{dd} setrgbcolor



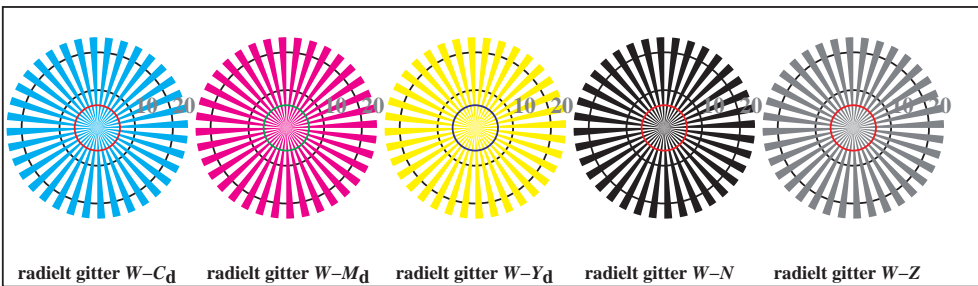
TN941-3, Figur B5Wdd: Skrift Landoltringer N; C_d; M_d; Y_d; Z; PS operator rgb->rgb_{dd} setrgbcolor



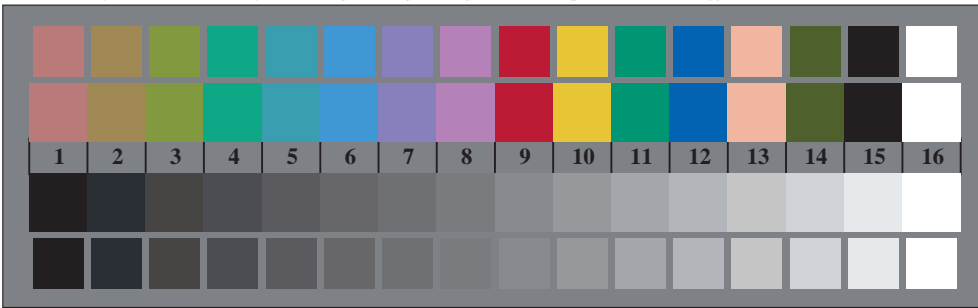
TN941-5, Figur B6Wdd: Landoltringer W-C_d; W-M_d; PS operator rgb->rgb_{dd} setrgbcolor



TN941-7, Figur B7Wdd: Landoltringer W-Y_d; W-N; PS operator rgb->rgb_{dd} setrgbcolor



TN940-5, Figur B2Wdd: radielt gitter W-C_d; W-M_d; W-Y_d; W-N; PS operator rgb->rgb_{dd} setrgbcolor

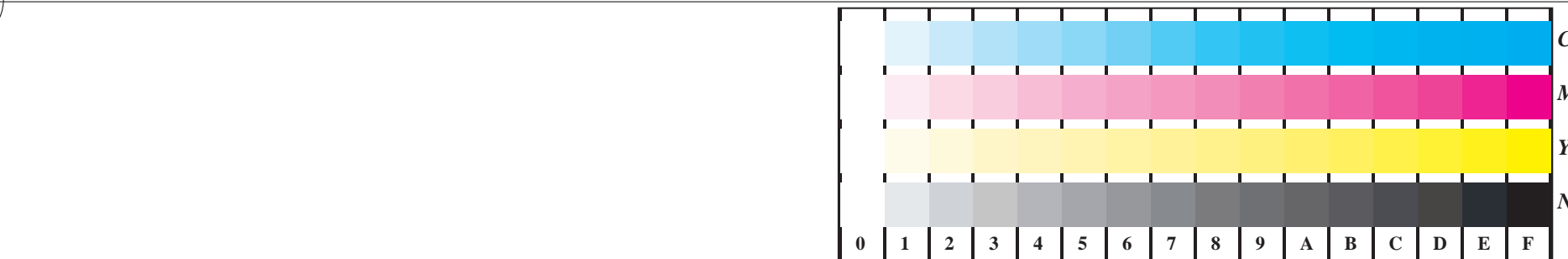


TN940-7, Figur B3Wdd: 14 CIE-prøvefarger og 2 + 16 gråtrinn (sf); rgb/cmy0->rgb_{dd} setrgbcolor

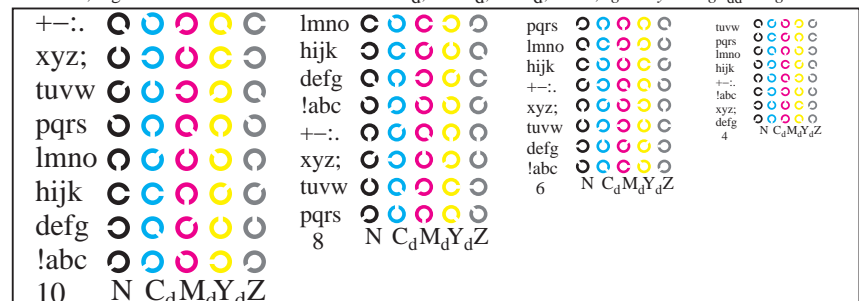


se lignende filer: <http://130.149.60.45/~farbmetrik/TN94/TN94.HTM>
 teknisk informasjon: <http://www.ps.bam.de> eller <http://130.149.60.45/~farbmetrik>

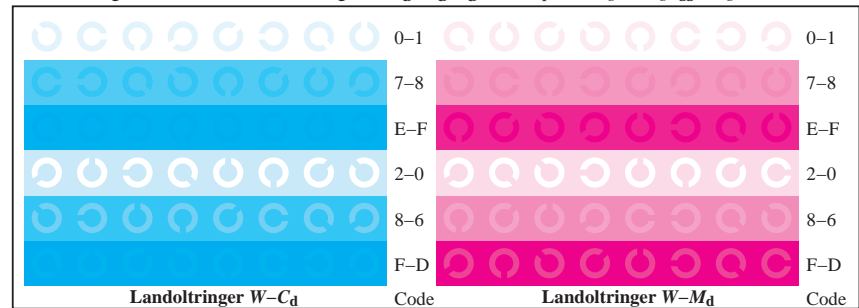
TUB registrering: 20150701-TN94/TN94L0FP.PDF /.PS
 anvendelse for måling av offsettrykk output, separasjoncmyn6* (CMYK)
 TUB-material: code=rh4ta



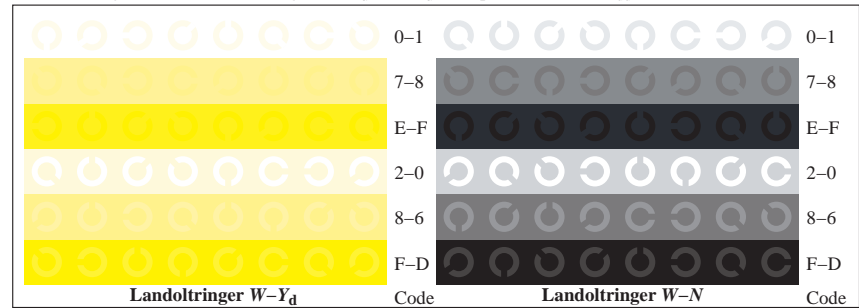
TN941-1, Figur B4Wdd: 16 ekvidistante trinn W-C_d; W-M_d; W-Y_d; W-N; rgb/cmy0->rgb_{dd} setrgbcolor



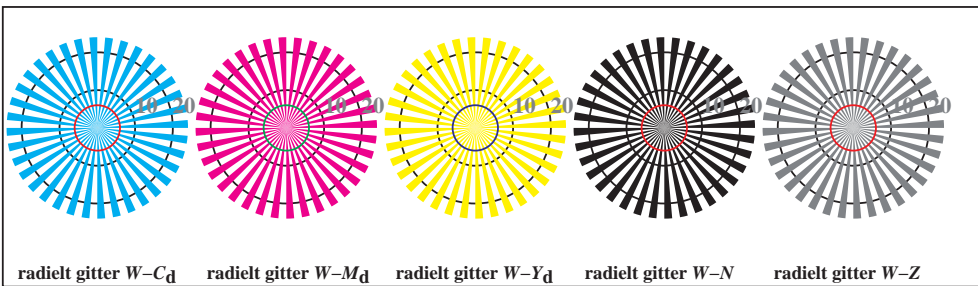
TN941-3, Figur B5Wdd: Skrift Landoltringer N; C_d; M_d; Y_d; Z; PS operator rgb->rgb_{dd} setrgbcolor



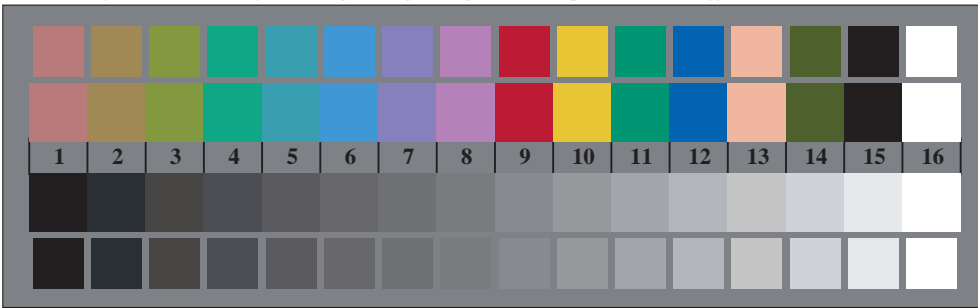
TN941-5, Figur B6Wdd: Landoltringer W-C_d; W-M_d; PS operator rgb->rgb_{dd} setrgbcolor



TN941-7, Figur B7Wdd: Landoltringer W-Y_d; W-N; PS operator rgb->rgb_{dd} setrgbcolor



TN940-5, Figur B2Wdd: radielt gitter W-C_d; W-M_d; W-Y_d; W-N; PS operator rgb->rgb_{dd} setrgbcolor

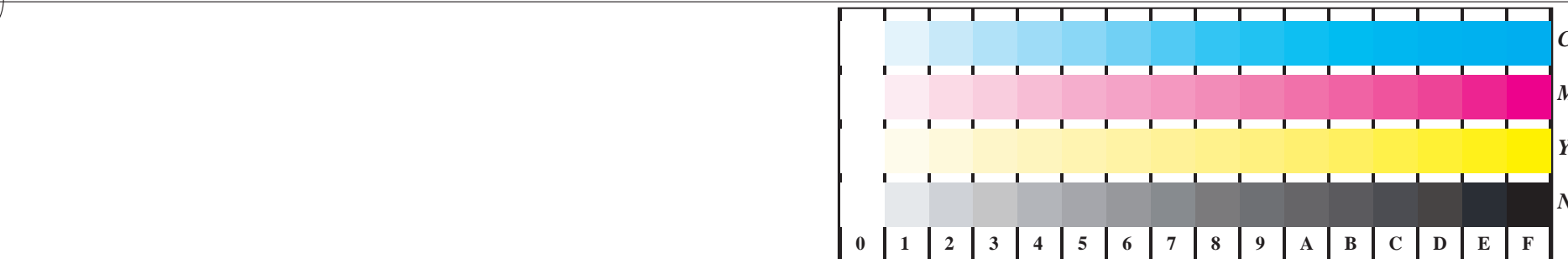


TN940-7, Figur B3Wdd: 14 CIE-prøvefarger og 2 + 16 gråtrinn (sf); rgb/cmy0->rgb_{dd} setrgbcolor

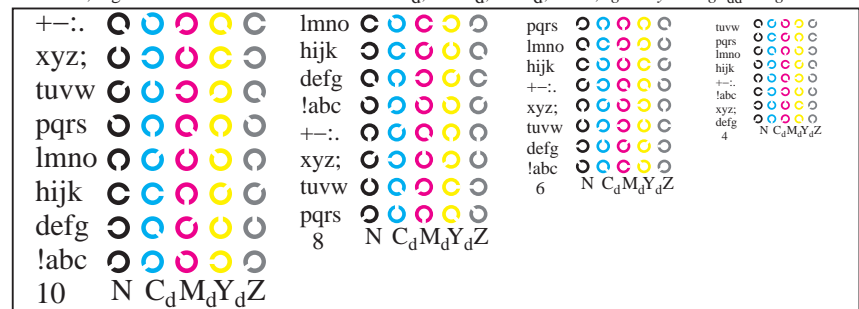


se lignende filer: <http://130.149.60.45/~farbmetrik/TN94/TN94.HTM>
 teknisk informasjon: <http://www.ps.bam.de> eller <http://130.149.60.45/~farbmetrik>

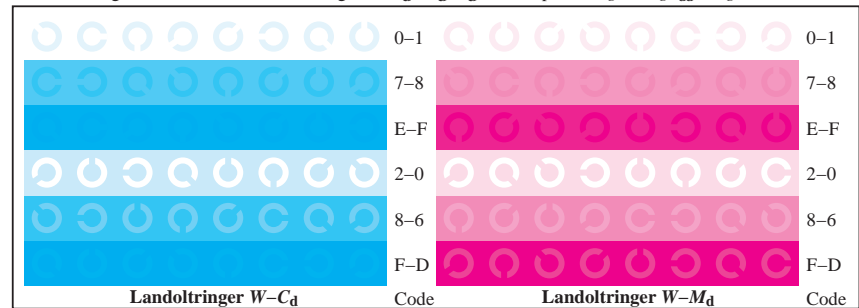
TUB registrering: 20150701-TN94/TN94L0FP.PDF /.PS
 anvendelse for måling av offsettrykk output, separasjoncmykn6* (CMYK)
 TUB-material: code=rh4ta



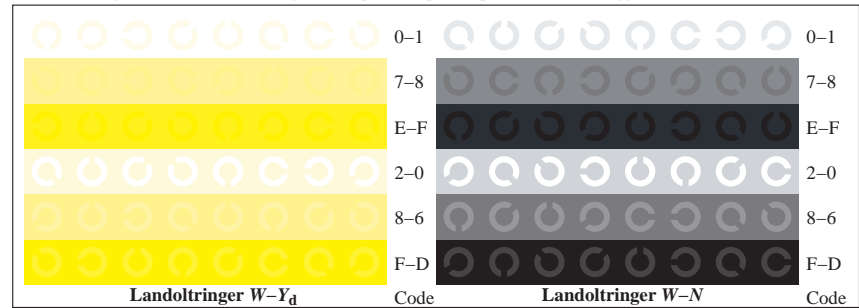
TN941-1, Figur B4Wdd: 16 ekvidistante trinn W-C_d; W-M_d; W-Y_d; W-N; rgb/cmy0->rgb_{dd} setrgbcolor



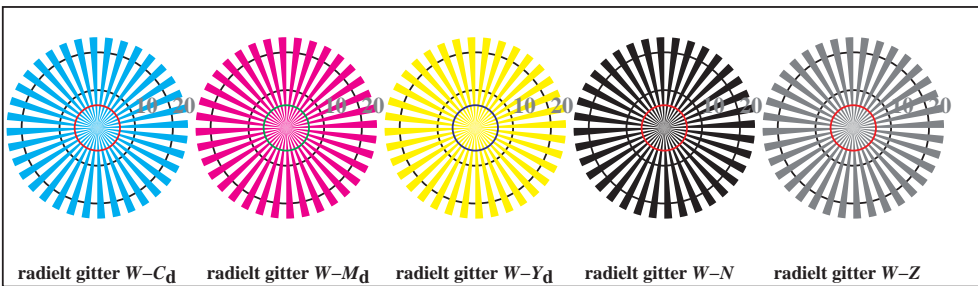
TN941-3, Figur B5Wdd: Skrift Landoltringer N; C_d; M_d; Y_d; Z; PS operator rgb->rgb_{dd} setrgbcolor



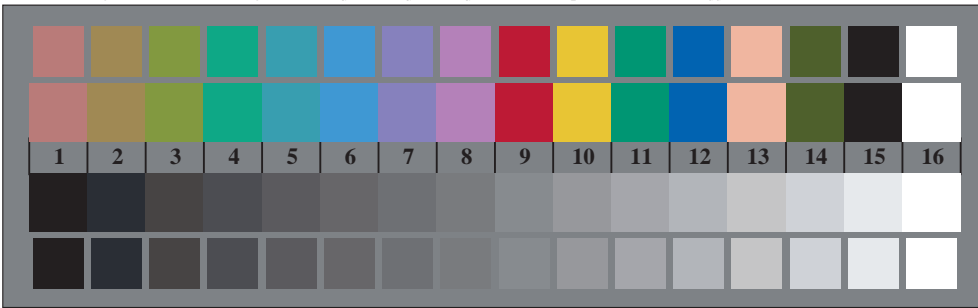
TN941-5, Figur B6Wdd: Landoltringer W-C_d; W-M_d; PS operator rgb->rgb_{dd} setrgbcolor



TN941-7, Figur B7Wdd: Landoltringer W-Y_d; W-N; PS operator rgb->rgb_{dd} setrgbcolor

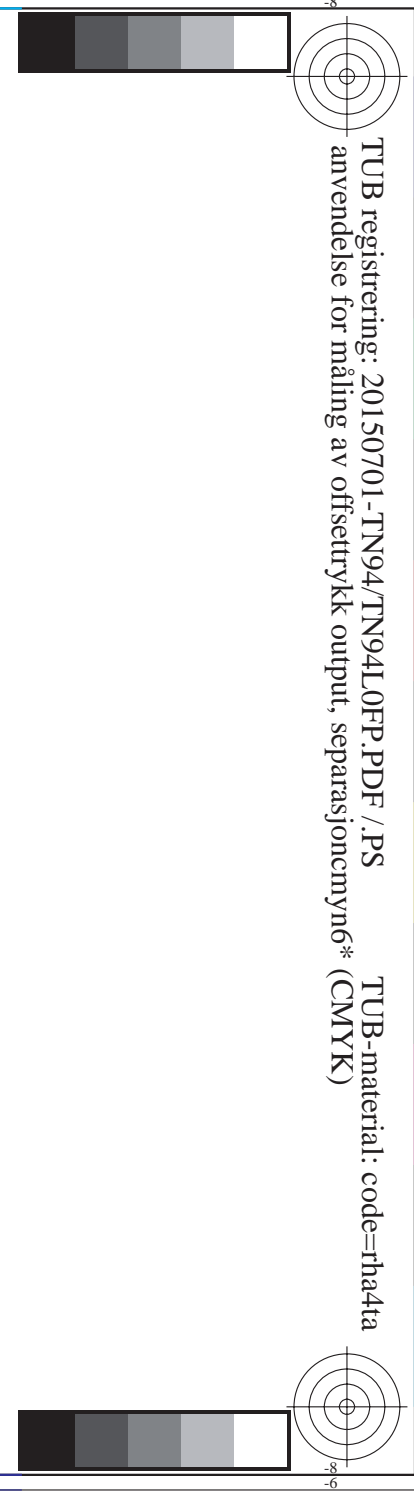
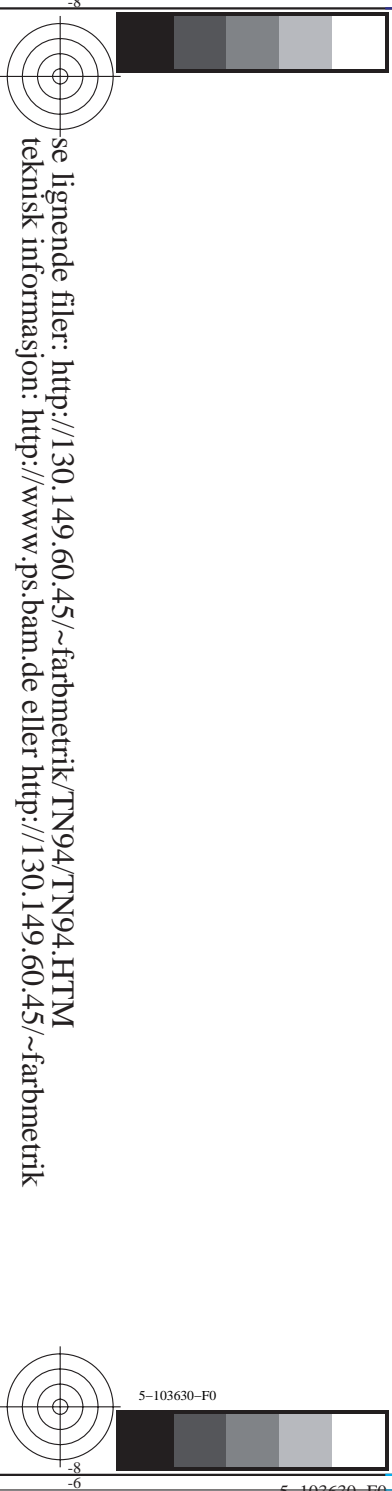


TN940-5, Figur B2Wdd: radielt gitter W-C_d; W-M_d; W-Y_d; W-N; PS operator rgb->rgb_{dd} setrgbcolor

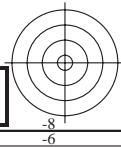
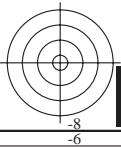
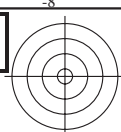
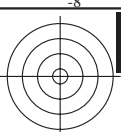


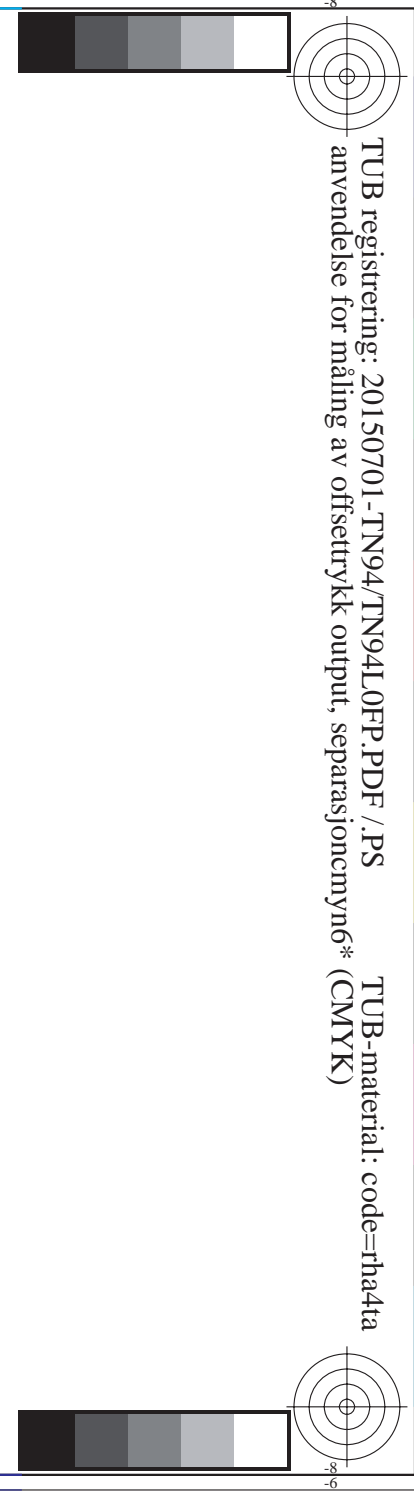
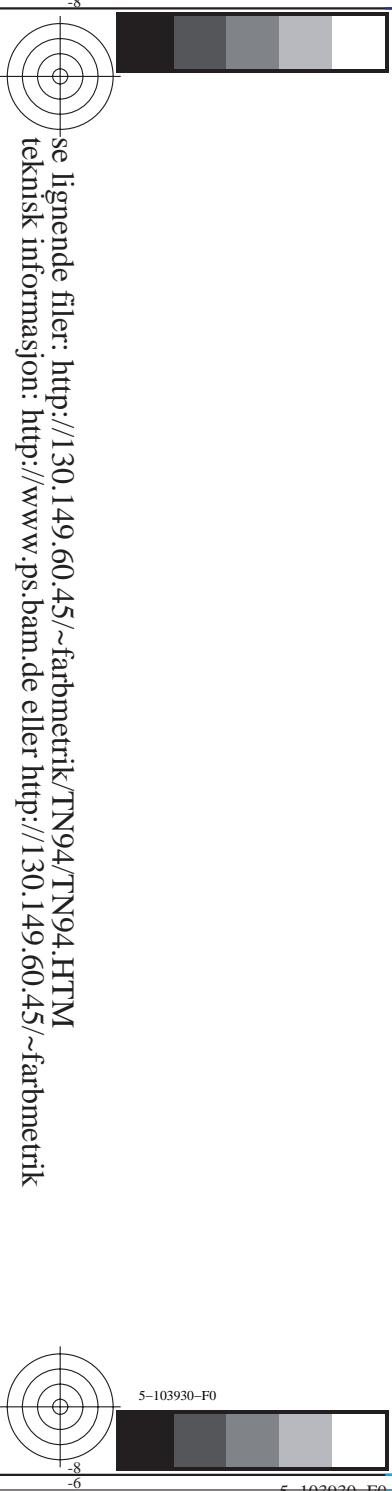
TN940-7, Figur B3Wdd: 14 CIE-prøvefarger og 2 + 16 gråtrinn (sf); rgb/cmy0->rgb_{dd} setrgbcolor





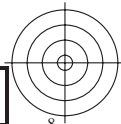
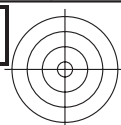
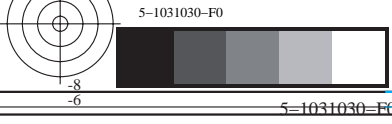


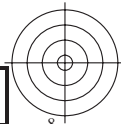
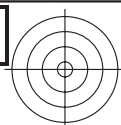


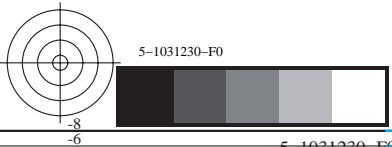


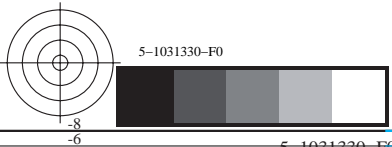
TUB registrering: 20150701-TN94/TN94L0FP.PDF /.PS TUB-material: code=rh4ta
anvendelse for måling av offsettrykk output, separasjoncmykn6* (CMYK)

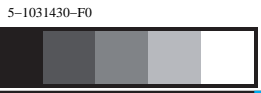
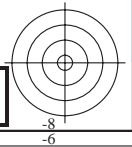
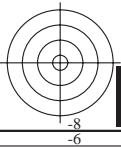
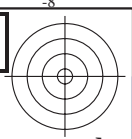
se lignende filer: <http://130.149.60.45/~farbmetrik/TN94/TN94.HTM>
teknisk informasjon: <http://www.ps.bam.de> eller <http://130.149.60.45/~farbmetrik>



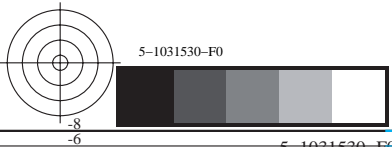


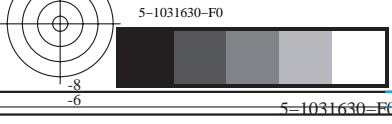


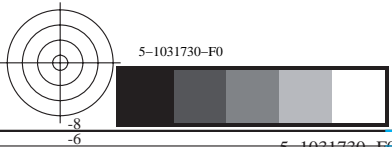




Large area containing faint, illegible text or patterns, likely the main content of the document or a watermark.



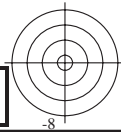
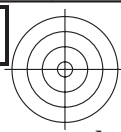
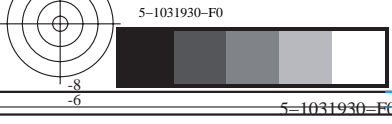






TUB registrering: 20150701-TN94/TN94L0FP.PDF /.PS TUB-material: code=rh4ta
anvendelse for måling av offsettrykk output, separasjoncmyk6* (CMYK)

se lignende filer: <http://130.149.60.45/~farbmetrik/TN94/TN94.HTM>
teknisk informasjon: <http://www.ps.bam.de> eller <http://130.149.60.45/~farbmetrik>



TUB registrering: 20150701-TN94/TN94L0FP.PDF /.PS TUB-material: code=rh4ta
anvendelse for måling av offsettrykk output, separasjoncmyk6* (CMYK)

se lignende filer: <http://130.149.60.45/~farbmetrik/TN94/TN94.HTM>
teknisk informasjon: <http://www.ps.bam.de> eller <http://130.149.60.45/~farbmetrik>

