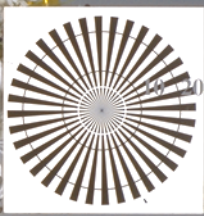
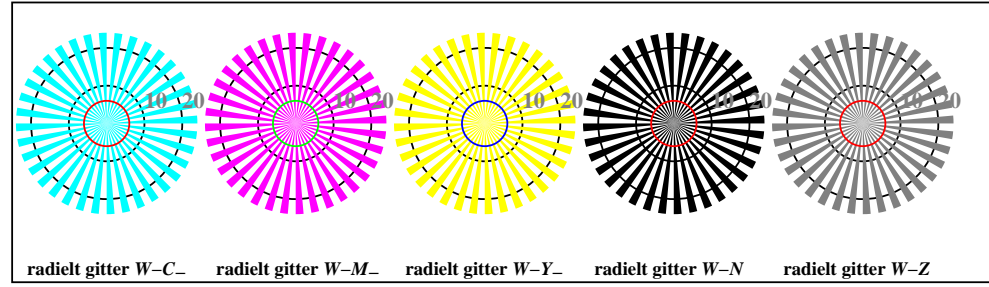


http://130.149.60.45/~farbmetrik/TN93/TN93L0NP.PDF /.PS; start output
N: ingen 3D-linearisering (OL) i fil (F) eller PS-startup (S), side 1/2

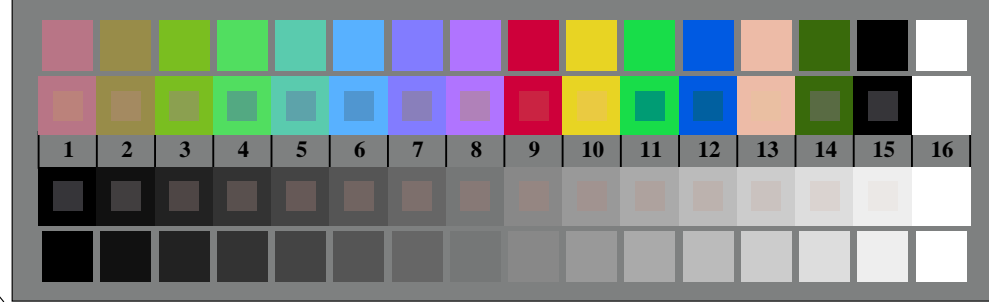
se lignende filer: http://130.149.60.45/~farbmetrik/TN93/TN93.HTM
teknisk informasjon: http://www.ps.bam.de eller http://130.149.60.45/~farbmetrik



TN930-3, Picture B1W-: and 2 + 16 grey steps (sf); ; PS operator 4 colorimage



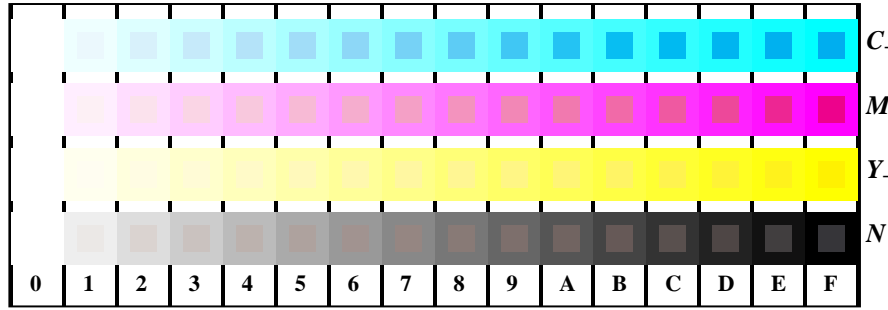
TN930-5, Figur B2W-: radielt gitter W-C-; W-M-; W-Y-; W-N-; PS operator rgb->rgb_setrgbcolor



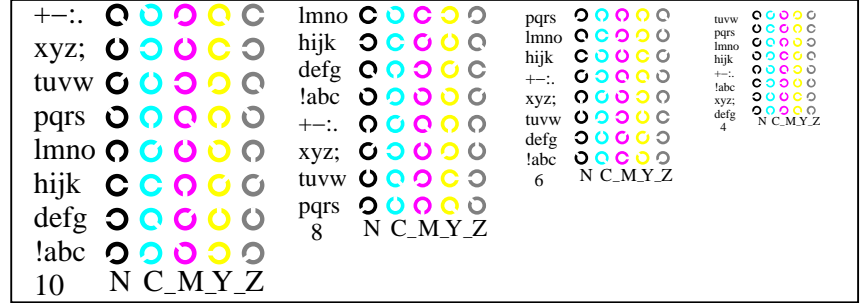
TN930-7, Figur B3W-: 14 CIE-prøvefarger og 2 + 16 gråtrinn (sf); rgb/cmy0 set(rgb/cmyk)color



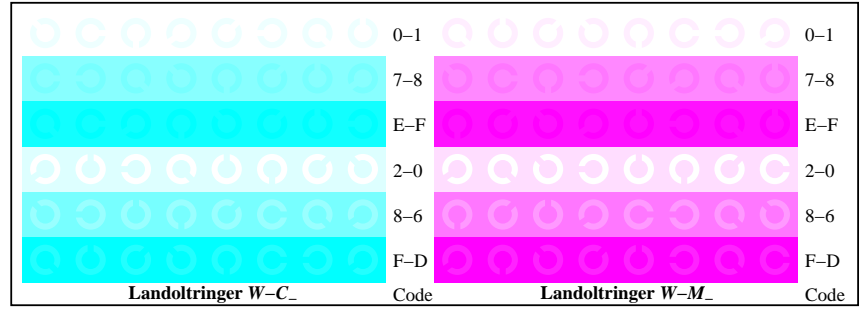
prøveplansje TN93; 2(ISO/IEC 15775 + ISO/IEC TR 24705)input: rgb/cmyk -> w/rgb/cmyk-
kromatisk prøveplansje CMY output: ingen endring



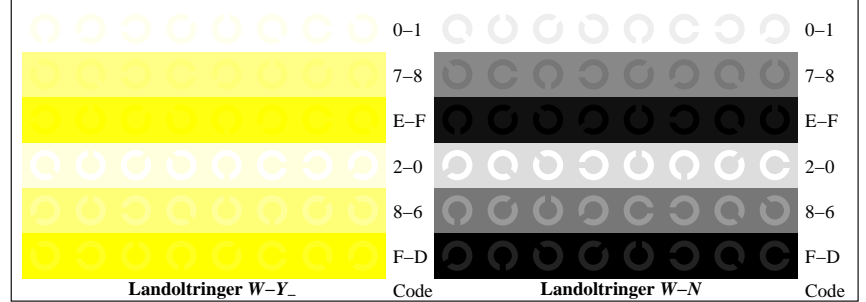
TN931-1, Figur B4W-: 16 ekvidistante trinn W-C-; W-M-; W-Y-; W-N-; rgb/cmy0 set(rgb/cmyk)color



TN931-3, Figur B5W-: Skrift Landoltringer N; C-; M-; Y-; Z; PS operator rgb->rgb_setrgbcolor



TN931-5, Figur B6W-: Landoltringer W-C-; W-M-; PS operator rgb setrgbcolor



TN931-7, Figur B7W-: Landoltringer W-Y-; W-N-; PS operator rgb setrgbcolor

TUB registrering: 20150701-TN93/TN93L0NP.PDF /.PS
anvendelse for måling av offsettrykk output

TUB-material: code=rh4ta